

90920000 - BATTING / GOLF CAGE

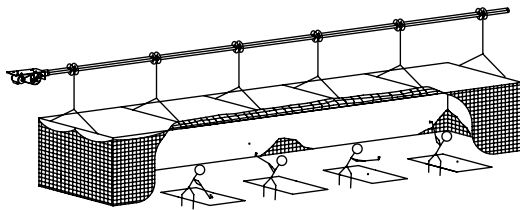
porter

WWW.GILLPORTER.COM/PORTER

CAGE SPECIFICATION SHEET

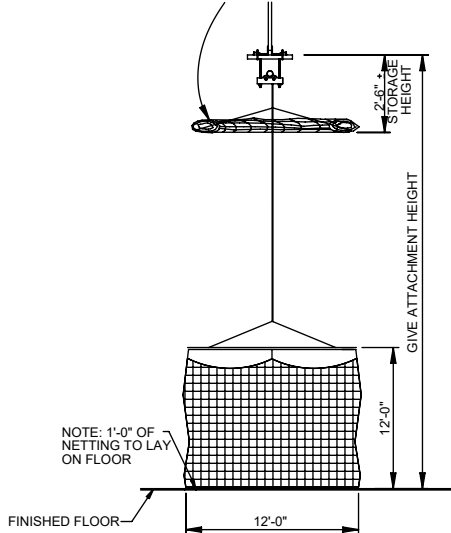
C-920

CEILING SUSPENDED UNIT 12' x 12' x 70' STANDARD (CUSTOM SIZES AVAILABLE)



CAGE SHOWN WITH SIDE OPEN FOR GOLF ACTIVITIES

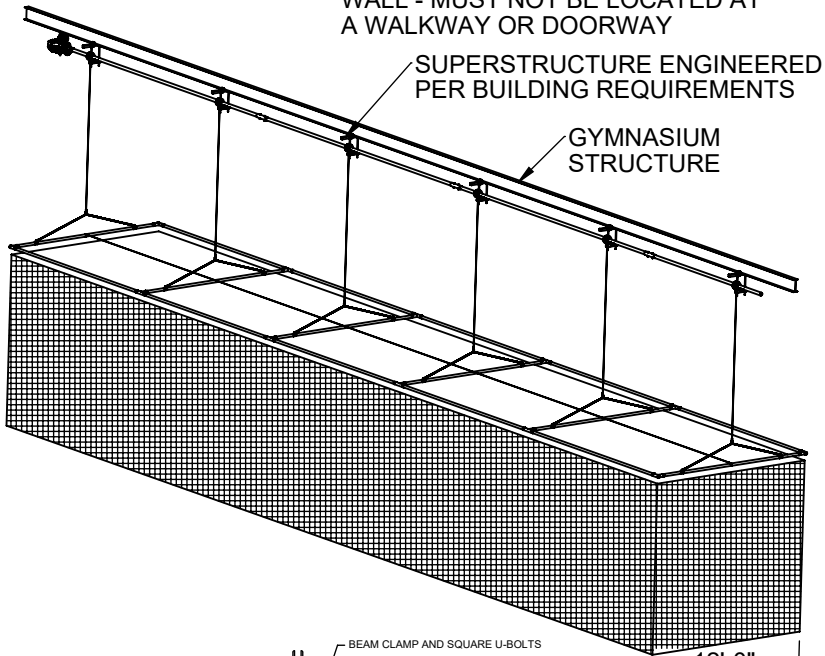
CAGE SHOWN IN HOISTED POSITION, WITH FOUR SIDES OF NETTING IN STORAGE POSITION ON TOP OF SUPPORT FRAME. SUPPORT FRAME LOWERS TO FLOOR FOR EASE OF ACCESS.



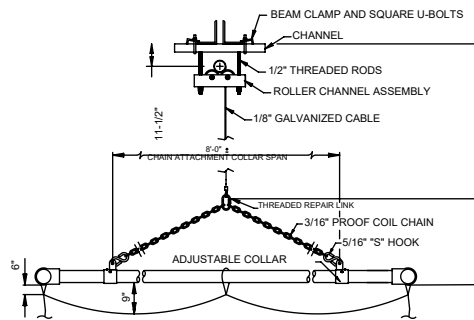
END VIEW OF CAGE SHOWING HOISTING ARRANGEMENT

ELECTRICIAN NOTE:
MOUNT 4" SQ. JUNCTION BOX WITHIN 3'-0" OF ELECTRIC WINCH

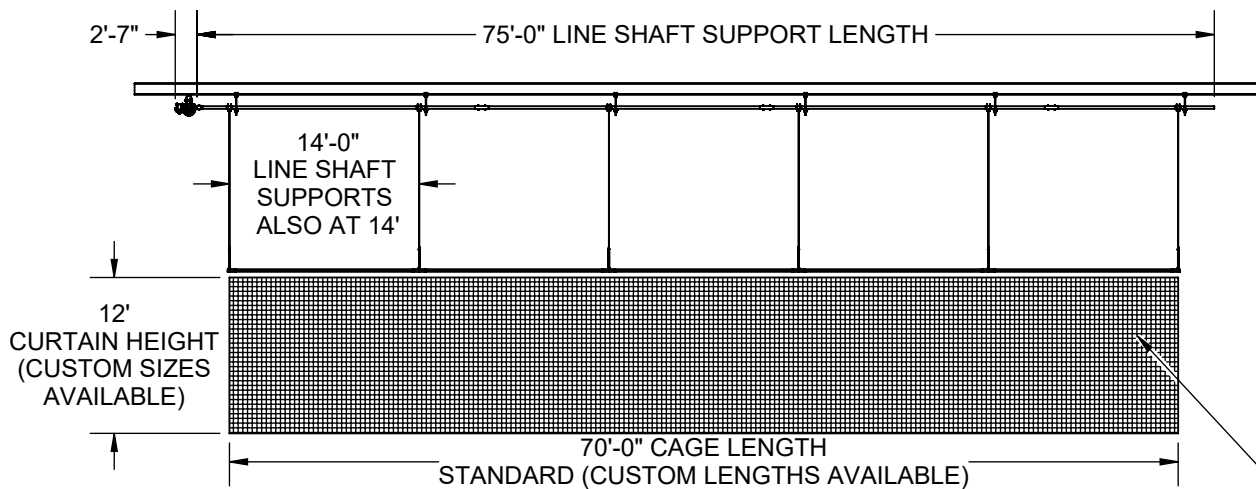
WARNING: CAGE MUST BE POSITIONED A MINIMUM OF 2'-6" OFF THE NEAREST WALL - MUST NOT BE LOCATED AT A WALKWAY OR DOORWAY



12'-0" (CUSTOM SIZES AVAILABLE)



HANGER DETAIL



7/8" SQUARE KNOTLESS NYLON MESH (NETTING IS ON ALL FOUR SIDES AND TOP)

90920000 CEILING SUSPENDED UNIT
- SIZE OF CAGE (CUSTOM ORDERS ONLY)

porter
888-277-7778 PORTER@PORTERATHLETIC.COM
© COPYRIGHT 2024 PORTER ATHLETIC - ALL RIGHTS RESERVED

PROJECT NUMBER

PROJECT NAME

1/2/2024

90920000 - BATTING / GOLF CAGE

CEILING SUSPENDED UNIT
12' x 12' x 70' STANDARD (CUSTOM SIZES AVAILABLE)

SPECIFICATIONS

Size of cage to be 12'-0" high x 12'-0" wide x 70'-0" in length. The four sides and top of cage shall be 7/8" square, knotless polypropylene mesh netting (#420 twine). Color of netting to be black. A 1/4" polypropylene rope shall be sewn into the perimeter of each section of netting. Netting shall be of sufficient size to allow approximately one foot of material to lie on floor to stop balls from being driven under netting.

For compact storage, the supporting frame may be lowered to approximately 3' above the floor in order to place the four sides of netting on top of the frame, requiring a minimum of space in the raised and stored position.

Supporting frame (12' x 70') of cage to be constructed of 1-7/8" O.D. heavy-wall electro-plated tubing with cross spreaders located at 14'-0" centers for hoist cable attachments. Tee fittings shall be provided at each tubing junction. Hoist cables (6) shall be of 1/8" diameter, vandal-proof galvanized cable (2,100 lb. breaking strength each cable). Bottom end of each cable shall terminate in a sling arrangement. Adjustable collars shall be provided for securing cable/sling to supporting frame, allowing for proper support and leveling of frame assembly.

Upper ends of hoist cables shall terminate into individual hoist drums positioned on continuous 2-3/8" O.D. tube line shaft arrangement. Line shaft shall turn in special support assemblies equipped with two 3" diameter polypropylene wheel rollers. Each support assembly shall be positioned adjacent to a cable hoist drum. Support assemblies shall be secured to structural roof framing supports by means of threaded rods, to provide structural integrity and accommodate all slopes or building camber.

Tee fittings and hoist drums shall be finished in a durable gray powder-coated finish.

See winch specifications for more information on included Porter winch system and control options. (see C-701)

WARRANTY

- Batting / Golf cages come with a 1 year limited warranty.
- Other components may be covered by their own extended warranty.

OPTIONAL ITEMS (SEE SPECIFICATION SHEETS FOR DETAIL)

- Line Shaft Safety Lock (C-10796, No. 10796000).
- Audible Motion Alarm: to provide an intermittent warning tone whenever the cage is being raised or lowered. (E-2005, No. 12005100)

LEED® SUBMITTAL INFORMATION

Credit	Measure
MRc4-Recycled Content	Post Consumer Average 15% Post Industrial 0%
MRc5-Regional Materials	Raw materials originate from multiple sources so origin point cannot be determined. Final Manufacturing/Assembly in Champaign, IL 61822