

# 1093 POWR-HYBRID VOLLEYBALL SYSTEM

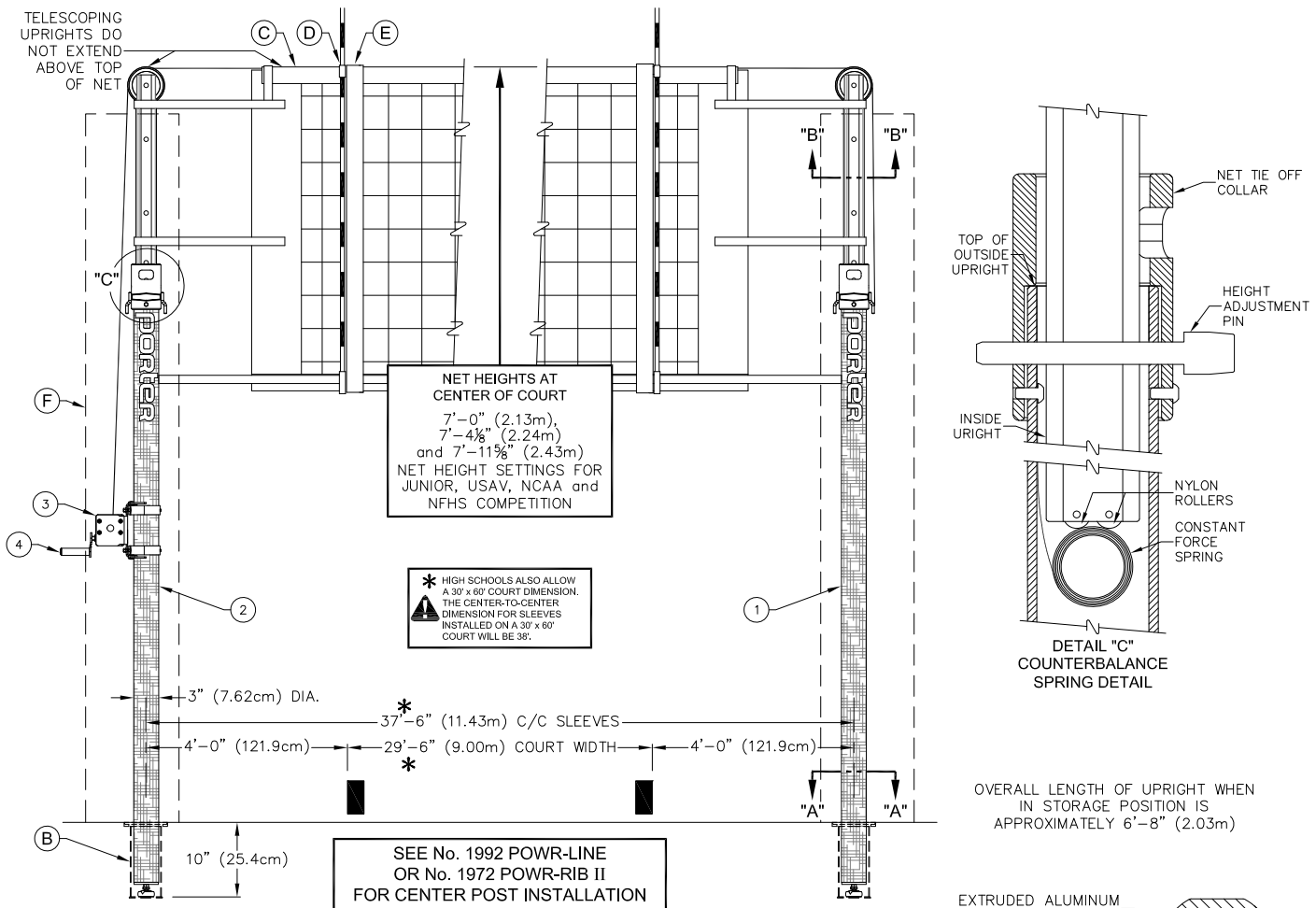
## SLEEVE-TYPE 3" CARBON / ALUMINUM VOLLEYBALL END STANDARDS

PORTER

WWW.PORTERATHLETIC.COM/FACILITY

VOLLEYBALL SPECIFICATION SHEET

V-1093



PARTS LIST - No. 1093				
No.	QTY.	DESCRIPTION		
1	1	UPRT 1093	HYBRID TIE OFF UPRIGHT	
2	1	UPRT 1093W	CARBON WINCH UPRIGHT	
3	1	WINH 00113	POWR-SELECT WINCH	
4	1	WINH 00114	CRANK FOR POWR-SELECT WINCH	

- 1093 POWR-HYBRID VOLLEYBALL STANDARDS (PAIR)
- 10939XX POWR-HYBRID VOLLEYBALL STANDARDS WITH PADS (PAIR)
- 10939XXSP POWR-HYBRID VOLLEYBALL STANDARDS WITH GRAPHIC PADS (PAIR)

QTY	PART No.	DESCRIPTION	No.	PAGE No.
	VARIOUS	3" DIA FLOOR SLEEVE (EACH)	B	VARIOUS
	2295	UNIVERSAL VOLLEYBALL NET (EACH)	C	V-2295
	2297	POWR-SELECT NET ANTENNA (PAIR)	D	V-2297
	00546000	BOUNDARY MARKERS w/ ANTENNA (PAIR)	E	V-546
	8390XX	UPRIGHT PROTECTIVE PADS (PAIR)	F	V-839
	779100	JUDGE'S STAND (NOT SHOWN)		V-7791
	7731XX	PADS FOR JUDGE'S STAND (NOT SHOWN)		V-7791

PORTER®

888-277-7778 PORTER@PORTERATHLETIC.COM  
© COPYRIGHT 2023 PORTER ATHLETIC - ALL RIGHTS RESERVED

PROJECT NUMBER

PROJECT NAME

10/06/2023

# 1093 POWR-HYBRID VOLLEYBALL SYSTEM

SLEEVE-TYPE 3" CARBON / ALUMINUM VOLLEYBALL END STANDARDS

## SPECIFICATIONS

### **PORTER No. 1093 *POWR-HYBRID*** **VOLLEYBALL STANDARDS (PAIR)**

Volleyball system shall consist of two telescoping type uprights and one winch. System shall be designed with height adjustment settings to meet all USAV, NCAA and NFHS requirements for competition. All aluminum posts, steel posts, or posts that do not telescope (that extend above the top of the net) will not be approved as equal.

Bottom upright shall be 3.0" (7.62cm) O.D. specially wound multi-layered high strength carbon fiber. Upright shall be designed to fit standard 3.0" (7.62cm) floor sleeves for new construction or existing floors. Specify No. 790 or 792 type floor sleeve. Upright shall be coated in a protective clear coat finish. Bottom of upright shall be provided with a special adjustable foot to protect finished floors when moving standard. Foot shall adjust in height to accommodate ground sleeves installed too deep.

Upper telescoping (adjustable) upright shall be extruded of 6005A-T5 aluminum alloy with special flats to eliminate rotation in the upright. Upper end of the upright shall be equipped with an integral pulley to reduce cable drag and undue tension on the entire system. Upper telescoping upright shall be adjustable in height by means of a 1/2" high strength steel pull pin, and shall be furnished with cut out holes for the following heights:

AGE GROUPS	FEMALE/REVERSE CO-ED	MALE/CO-ED
70 years and above	2.19 m (7'-2 1/8")	2.29 m (7'-6")
55 years and above	2.19 m (7'-2 1/8")	2.38 m (7'-9 5/8")
45 years and above	2.19 m (7'-2 1/8")	2.43 m (7'-11 5/8")
15-18 years and under	2.24 m (7'-4 1/8")	2.43 m (7'-11 5/8")
13-14 years and under	2.24 m (7'-4 1/8")	2.24 m (7'-4 1/8")
11-12 years and under	2.13 m (7'-0")	2.13 m (7'-0")
10 years and under	1.98 m (6'-6")	2.13 m (7'-0")

Upper telescoping upright shall be counterbalanced in a static position when adjustment pin is removed by means of a special, constant tension spring mechanism located inside the lower upright assembly in order to eliminate the possibility of accidentally falling while making height adjustments. Bottom end of the upright shall be equipped with special internally mounted nylon rollers to minimize friction and wear of the constant tension spring mechanism.

Tensioning reel shall be a vertical lift, worm gear winch with steel frame. Frame construction shall be of interlocking steel for high rigidity and precise alignment, semi enclosed for safety, and powder coated for corrosion resistance. Self-locking worm drive will prevent snap back or loss of tension. Net shall attach directly to the winch eliminating the need for straps.

1093 upright pair shall consist of one winch post and one end post.

Weight of each post shall not exceed 33 pounds for the winch post and 26 pounds for the end post.

## WARRANTY

Volleyball system furnished with the following warranty:

Uprights – 10 year limited warranty

Winch – 1 year limited warranty

ISSUED OCTOBER 6, 2023, SUBJECT TO CURRENT MANUFACTURING PROCEDURES AND CHANGES

COPYRIGHT 2023 - PORTER ATHLETIC - ALL RIGHTS RESERVED

PORTER@PORTERATHLETIC.COM

**PORTER**  
WWW.PORTERATHLETIC.COM/FACILITY

**VOLLEYBALL SPECIFICATION SHEET**

V-1093

10/06/2023