



REPAIR INSTRUCTIONS

THREADED ROD REPLACEMENT KIT FOR CENTER-STRUT® HEIGHT ADJUSTMENT UNITS No. REPL 09009 002

WARNING

READ ALL INSTRUCTIONS THOROUGHLY BEFORE ATTEMPTING TO ASSEMBLE THIS EQUIPMENT. ASSEMBLY OF THIS EQUIPMENT MUST BE DONE BY PHYSICALLY CAPABLE ADULTS ONLY.

NOTE – This Threaded Rod Repair Kit is for Porter Height Adjustment Units manufactured after February 1995. See illustration at right to verify you have the style of height adjustment unit that is compatible with this replacement kit.

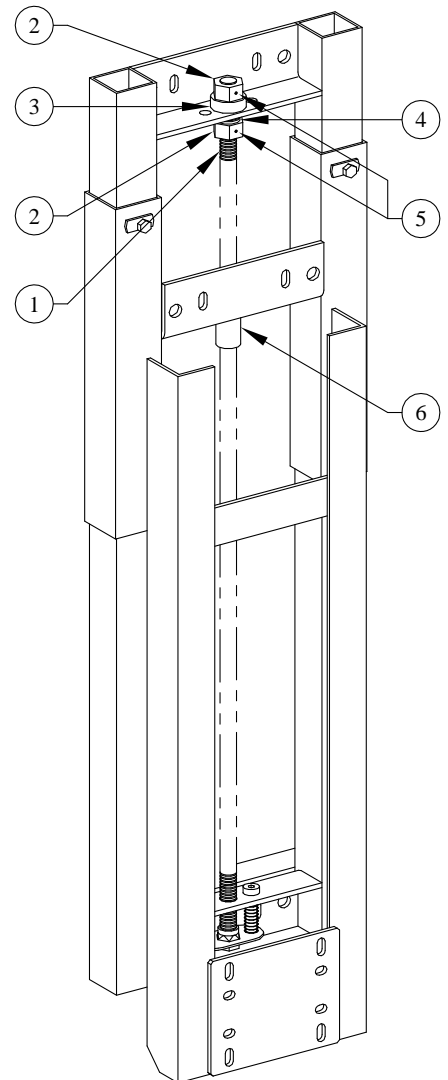
PARTS LIST

Item No.	Qty.	Part No.	Description
1	1	HDWE 58112 000	Threaded Rod Weldment
2	2	HDWE 53041 000	3/4" Acme Hex Nut
3	1	BUSH 00014 0E0	3/4" Thrust Bearing
4	2	HDWE 55051 000	3/4" Nylon Flatwasher
5	2	HDWE 08054 0E0	Roll Pin – 1/8" x 1-1/4" Lg.
6	1	HDWE 53015 000	Adjusting Nut Weldment
7	1	LABL 00538 000	Set of UP and DOWN Labels

TOOLS REQUIRED:

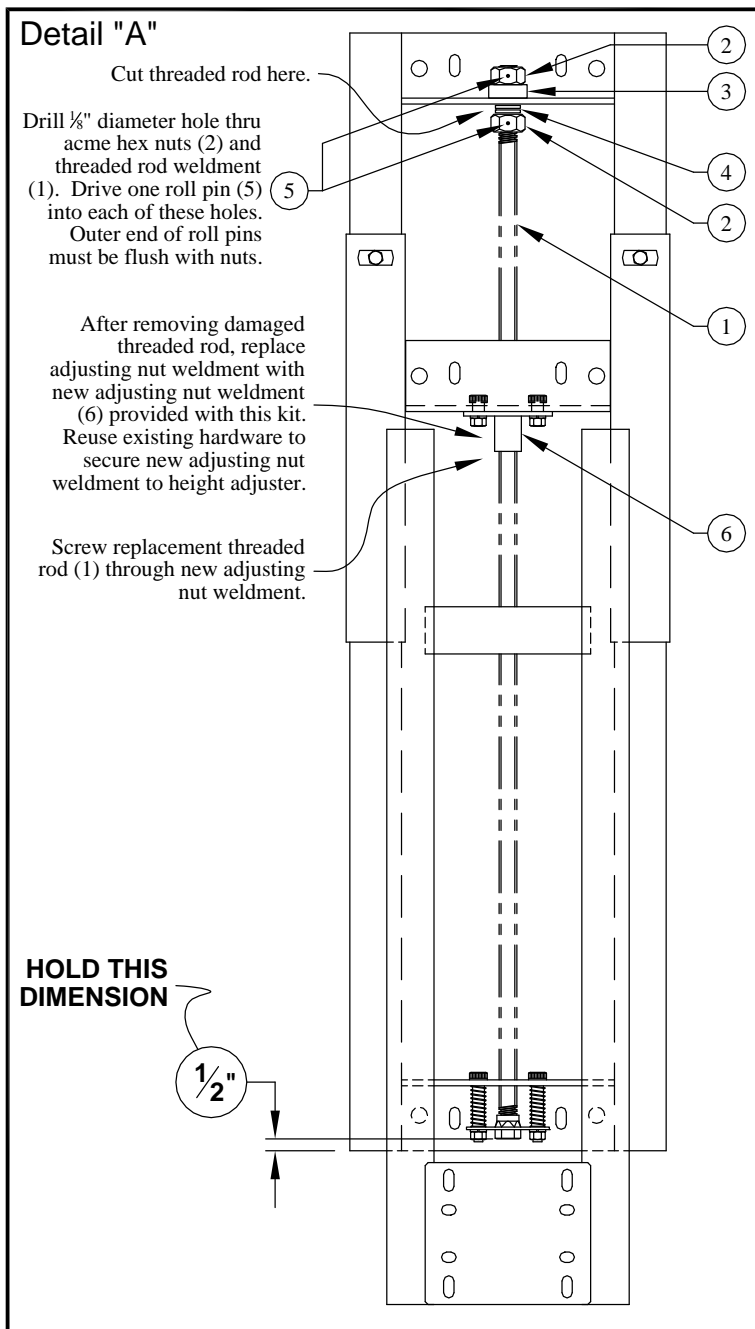
- Hacksaw, reciprocating saw, etc.
- Power drill with 1/8"Ø drill bits
- Hammer
- Tape measure

See other side of this page for complete instructions on how to replace threaded rod.

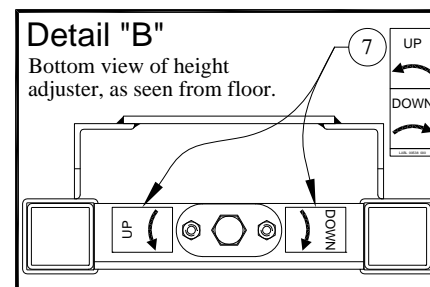


SAVE THESE INSTRUCTIONS FOR FUTURE USE

7. Lower height adjustment unit to its lowest position. If it is not possible to do so, then the height adjustment unit must be secured in its present position, so the sliding mechanism does not drop when the damaged threaded rod is cut. Use chain, cable, etc. to do so.
2. Cut out existing, damaged threaded rod from unit, and discard. Also discard all fittings that were at the top of the threaded rod.
3. Remove existing adjustment nut weldment from height adjustment unit and discard. In its place, install new adjustment nut weldment (6), provided with this kit, onto height adjustment unit. Reuse existing hardware. Tighten hardware fully. Check that new adjustment nut weldment (6) "floats" on height adjustment unit – this ensures alignment with threaded rod weldment.
4. Install replacement threaded rod weldment (1) provided with this kit as shown in Detail "A". Locate all replacement components properly at the top end, as shown in Detail "A".
5. Screw new threaded rod weldment (1) in or out of the upper 3/4" acme hex nut (2) as required, so that the bottom of the nut at the lower end of the threaded rod weldment is exactly **1/2"** above the bottom of the height adjuster frame tubes. **HOLD THIS DIMENSION.** See Detail "A".
6. Check the 1/2" dimension from Step No. 5, then drill a 1/8" diameter hole thru the upper 3/4" acme hex nut (2) and threaded rod weldment (1). Drive a roll pin (5) completely into this hole, connecting this acme hex nut to the threaded rod. See Detail "A".
7. Rotate the lower 3/4" acme hex nut (2) up, so it and the two nylon flatwashers (4) are snug against the underside of the angle, but not too tight. Drill a 1/8" diameter hole thru the lower 3/4" acme hex nut (2) and threaded rod weldment (1). Drive a roll pin (5) completely into this hole, connecting this acme nut to the threaded rod. See Detail "A".



8. Lubricate the new threaded rod with lithium-type grease.
9. Remove any safety chain that may have been installed in Step No. 1. Test the operation of the height adjustment unit by cranking it up and down several times.
10. New UP and DOWN labels are provided with this kit. Check the existing UP and DOWN labels on the bottom of the height adjuster. Replace as required, being sure to locate the new labels correctly. See Detail "B".
11. Replacement of threaded rod is now complete.



porter

Porter Athletic, Inc.

2500 South 25th Avenue, Broadview, IL U.S.A., 60155

Toll Free: (800) 947-6783 • Phone: (708) 338-2000 • Fax: (708) 338-2060

www.porter-ath.com

SAVE THESE INSTRUCTIONS FOR FUTURE USE