

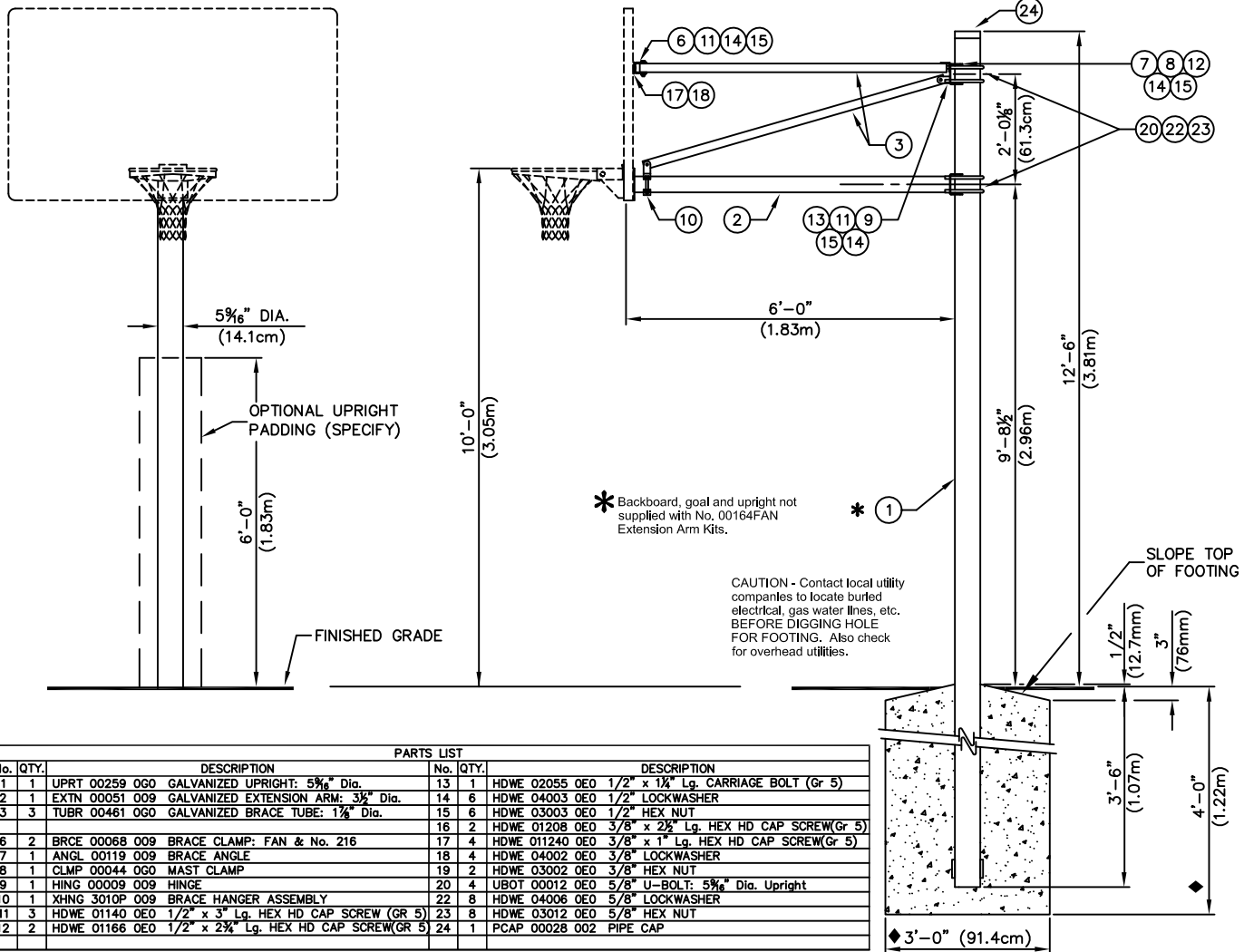
porter
WWW.PORTERATHLETIC.COM/FACILITY

WWW.PORTERATHLETIC.COM/FACILITY

BASKETBALL SPECIFICATION SHEET

R-166HF

* SHOWN WITH No. 216 RECT.
FIBERGLASS BACKBOARD -
NOT PROVIDED



See R-187 — 001870XX UPRIGHT PROTECTIVE PADDING — IN STANDARD PORTER COLORS

*_____ – 166FAN EXTENSION ARM KIT (6' Ext.)

WITH HARDWARE FOR EXISTING 5 $\frac{9}{16}$ " DIA. POLE, FOR USE WITH FAN BOARDS AND No. 216 BOARD

◆ MINIMUM RECOMMENDED FOOTING SIZE SHOWN. INCREASE SIZE OF FOOTING AS REQUIRED ACCORDING TO LOCAL SOIL CONDITIONS, AND TO MEET LOCAL BUILDING CODES REGARDING MINIMUM WIND SPEEDS.

PART NUMBER:

_____ – 166HF -- FOR FAN AND RECT. FIBERGLASS BACKBOARDS

FOR 5- $\frac{9}{16}$ " UPRIGHTS WITH FULL 1 $\frac{7}{8}$ " BRACING FOR GLASS AND RECT. STEEL
BACKBOARDS SEE SPEC. R-166-4

NOTE: BACKBOARDS AND GOALS ARE ORDERED SEPARATELY

NOTE – SEE INDIVIDUAL DRAWINGS FOR
BACKBOARD, GOAL AND PADDING
SPECIFICATIONS

The Porter logo, featuring the word "porter" in a stylized, outlined font. The letters are thick and blocky, with a modern, sans-serif feel. The 'p' and 'r' have distinctive shapes. A registered trademark symbol (®) is located at the top right of the 'r'.

1-800-637-3090 PORTER@PORTERATHLETIC.COM
© COPYRIGHT 2017 PORTER ATHLETIC - ALL RIGHTS RESERVED

PROJECT NUMBER

PROJECT NAME

7/18/2017

166-HF - VERTICAL POST AND BRACING

6' EXTENDED VERTICAL 5-9/16" POST WITH FULL 1 7/8" OD BRACING
FOR FAN AND 216 BACKBOARDS

SPECIFICATIONS

PORTER No. 166HF – 6' EXTENDED VERTICAL POST WITH FULL HEAVY DUTY BRACING FOR FAN AND RECTANGULAR FIBERGLASS BACKBOARDS

Upright support shall be 5-9/16" (14.13cm) O.D. heavy-wall galvanized steel pipe capped at top end. Anchor lugs shall be provided on lower end for securing into a concrete footing.

Backboard shall be supported 6'-0" (1.83m) in front of center upright support by means of special horizontal support assemblies for ease of installing goal heights at any location between 8'-0" (2.44m) and 10'-0" (3.05m). Lower horizontal support assembly shall be fabricated from 3-1/2" O.D. (8.89cm) O.D. heavy-wall tubing equipped with a special steel, die formed fitting for attachment to the upright support. Lower horizontal support assembly shall extend to a mounting plate directly behind the goal mounting holes to transfer all goal impact loading directly to the rear support structure to eliminate stress on the backboards. Lower horizontal support assembly shall be supported directly behind the goal mounting plates by means of a diagonally mounted heavy-wall 1-7/8" (4.76cm) O.D. steel tube extending to the upper end of the upright support.

Upper part of the backboard shall be further braced by dual, heavy-wall 1-7/8" (4.76cm) O.D. steel tubes extending outward from the upper end of the center upright support into special hinge fittings mounted on 2'-11" (88.9cm) centers on the backside of the backboards.

For specifications of backboards or goals, see specific page in backboard/goal section.

00166HF – See page No. B-234 for specifications on Porter Aluminum Fan Backboards No. 234 or 234A and page No. B-267 for specifications on Porter Fan Fiberglass Backboard No. 267. See page No. B-216 for specifications on Porter 3'-6" x 6' Rectangular Fiberglass Backboard No. 216.

Backboard and goals are ordered separately.

OPTIONAL ITEMS TO SPECIFY

- See Page No. B-324-72 for specifications on Porter No. 00324-672 Backboard Padding (Each) (rectangular backboards only).
- See Page No. R-187 for specifications on Porter No. 000187XX Upright Padding (Each).