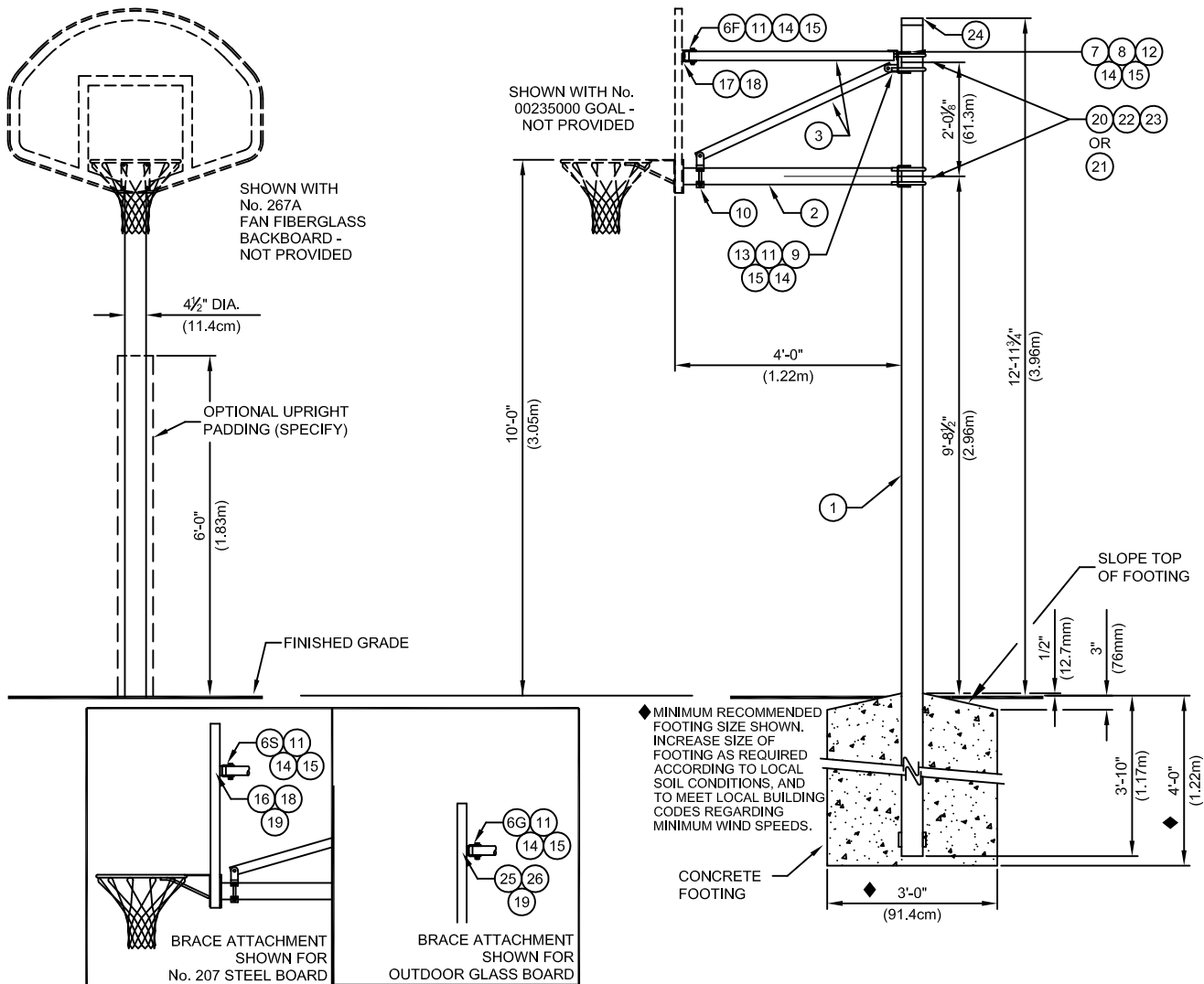


164-H - VERTICAL POST AND BRACING

4' EXTENDED VERTICAL 4-1/2" POST WITH FULL 1 7/8" OD BRACING



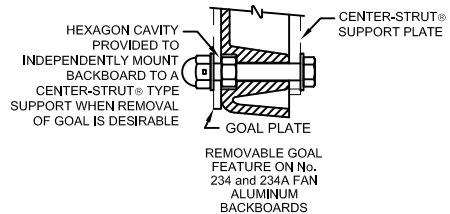
NOTE - SEE INDIVIDUAL DRAWINGS FOR BACKBOARD, GOAL AND PADDING SPECIFICATIONS

PARTS LIST					
No.	QTY.	DESCRIPTION	No.	QTY.	DESCRIPTION
1	1	UPRT 00258 0G0 UPRIGHT: 4 1/2" Dia, GALVANIZED	14	6	HDWE 04003 0E0 1/2" LOCKWASHER
2	1	EXTN 00050 009 EXTENSION ARM: 3/4" Dia, ZINC FLO-COAT	15	6	HDWE 03003 0E0 1/2" HEX NUT
3	3	TUBR 00460 0G0 BRACE TUBE: 1 1/2" Dia, ZINC FLO-COAT	16	2	HDWE 01208 0E0 3/8" x 2 1/2" Lg. HEX HD CAP SCREW (Gr. 5)
6F	2	BRCE 00068 009 BRACE CLAMP: FAN BOARDS & No. 216	17	4	HDWE 01124 0E0 3/8" x 1" Lg. HEX HD CAP SCREW (Gr. 5)
6G	2	BRCE 00078 BRACE CLAMP: GLASS BOARDS	18	4	HDWE 04002 0E0 3/8" LOCKWASHER
6S	2	BRCE 00088 009 BRACE CLAMP: RECT. STEEL BOARDS	19	2	HDWE 03002 0E0 3/8" HEX NUT
7	1	ANGL 00119 009 BRACE ANGLE	20	4	UBOT 00011 0E0 5/8" U-BOLTS: 4 1/2" Dia, Upright
8	1	CLMP 00044 0G0 MAST CLAMP	21	4	UBOT 00012 0E0 5/8" U-BOLTS: 5 1/2" Dia, Upright
9	1	HING 00009 009 HINGE	22	8	HDWE 04006 0E0 5/8" LOCKWASHER
10	1	XHING 3010P 009 BRACE HANGER ASSEMBLY	23	8	HDWE 03012 0E0 5/8" HEX NUT
11	3	HDWE 01140 0E0 1/2" x 3" Lg. HEX HD CAP SCREW (Gr. 5)	24	1	PCAP 00027 002 PIPE CAP
12	2	HDWE 01166 0E0 1/2" x 2 1/2" Lg. HEX HD CAP SCREW (Gr. 5)	25	4	HDWE 05017 1/2" SAE FLAT WASHER
13	1	HDWE 02055 0E0 1/2" x 1 1/2" Lg. CARRIAGE BOLT (Gr. 5)	26	2	HDWE 01164 0E0 1/2" x 2 1/2" Lg. HEX HD CAP SCREW (Gr. 5)

PART NUMBER:

- _____ - 164HF - FOR FAN AND RECT. FIBERGLASS BACKBOARDS
- _____ - 164HG - FOR OUTDOOR GLASS BACKBOARDS
- _____ - 164HS - FOR RECTANGULAR STEEL BACKBOARDS

NOTE: BACKBOARDS AND GOALS ARE ORDERED SEPARATELY



- See R-69 - 000690XX UPRIGHT PROTECTIVE PADDING IN STANDARD PORTER COLORS
- _____ - 164FAN EXTENSION ARM KIT (4' Ext.) WITH HARDWARE FOR EXISTING 4 1/2\" OR 5 1/8\" DIA. POLE, FOR USE WITH FAN BOARDS AND No. 216 BOARD
- _____ - 164GLS EXTENSION ARM KIT (4' Ext.) WITH HARDWARE FOR EXISTING 4 1/2\" OR 5 1/8\" DIA. POLE, FOR USE WITH GLASS BOARDS
- _____ - 164RCT EXTENSION ARM KIT (4' Ext.) WITH HARDWARE FOR EXISTING 4 1/2\" OR 5 1/8\" DIA. POLE, FOR USE WITH RECT. STEEL BOARDS

porter[®]

1-800-637-3090 PORTER@PORTERATHLETIC.COM
© COPYRIGHT 2017 PORTER ATHLETIC - ALL RIGHTS RESERVED

PROJECT NUMBER _____

PROJECT NAME _____

porter

WWW.PORTERATHLETIC.COM/FACILITY

BASKETBALL SPECIFICATION SHEET

R-164H

7/18/2017

164-H - VERTICAL POST AND BRACING

4' EXTENDED VERTICAL 4-1/2" POST WITH FULL 1 7/8" OD BRACING

SPECIFICATIONS

PORTER No. 164HX – 4' EXTENDED VERTICAL POST WITH FULL HEAVY DUTY BRACING

Upright support shall be 4-1/2" (11.43cm) O.D. heavy-wall galvanized steel pipe capped at top end. Anchor lugs shall be provided on lower end for securing into a concrete footing.

Backboard shall be supported 4'-0" (1.22m) in front of center upright support by means of special horizontal support assemblies for ease of installing goal heights at any location between 8'-0" (2.44m) and 10'-0" (3.05m). Lower horizontal support assembly shall be fabricated from 3-1/2" O.D. (8.89cm) O.D. heavy-wall tubing equipped with a special steel, die formed fitting for attachment to the upright support. Lower horizontal support assembly shall extend to a mounting plate directly behind the goal mounting holes to transfer all goal impact loading directly to the rear support structure to eliminate stress on the backboards. Lower horizontal support assembly shall be supported directly behind the goal mounting plates by means of a diagonally mounted heavy-wall 1-7/8" (4.76cm) O.D. steel tube extending to the upper end of the upright support.

Upper part of the backboard shall be further braced by dual, heavy-wall 1-7/8" (4.76cm) O.D. steel tubes extending outward from the upper end of the center upright support into special hinge fittings mounted on 2'-11" (88.0cm) centers on the backside of the backboards.

X designates the kit number with the appropriate board brace adaptor for the style of board to be installed.

00164HF – See page No. B-234 for specifications on Porter Aluminum Fan Backboards No. 234 or 234A and page No. B-267 for specifications on Porter Fan Fiberglass Backboard No. 267. See page No. B-216 for specifications on Porter 3'-6" x 6' Rectangular Fiberglass Backboard No. 216.

00164HG – See page No. B-210 for specifications on Porter 3'-3" x 4'-6" Rectangular Glass Backboard No. 210.

00164HS – See page No. B-207 for specifications on Porter 3'-6" x 6' Rectangular Steel Perforated Backboard No. 207.

For specifications of backboards or goals, see specific page in backboard/goal section.

Backboard and goals are ordered separately.

OPTIONAL ITEMS TO SPECIFY

- See Page No. B-324-72 for specifications on Porter No. 00324-672 Backboard Padding (Each) (rectangular backboards only).
- See Page No. R-69 for specifications on Porter No. 000690XX Upright Padding (Each).

ISSUED JULY 18, 2017, SUBJECT TO CURRENT MANUFACTURING PROCEDURES AND CHANGES
COPYRIGHT 2017 - PORTER ATHLETIC - ALL RIGHTS RESERVED
PORTER@PORTERATHLETIC.COM