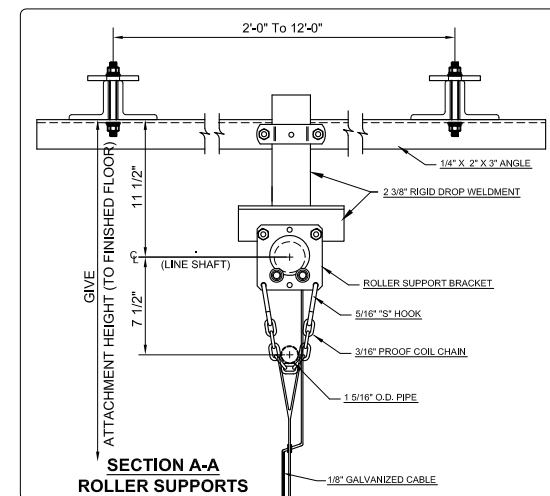
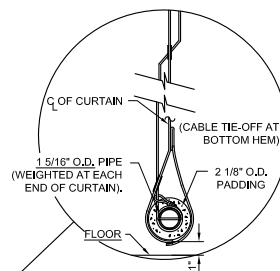
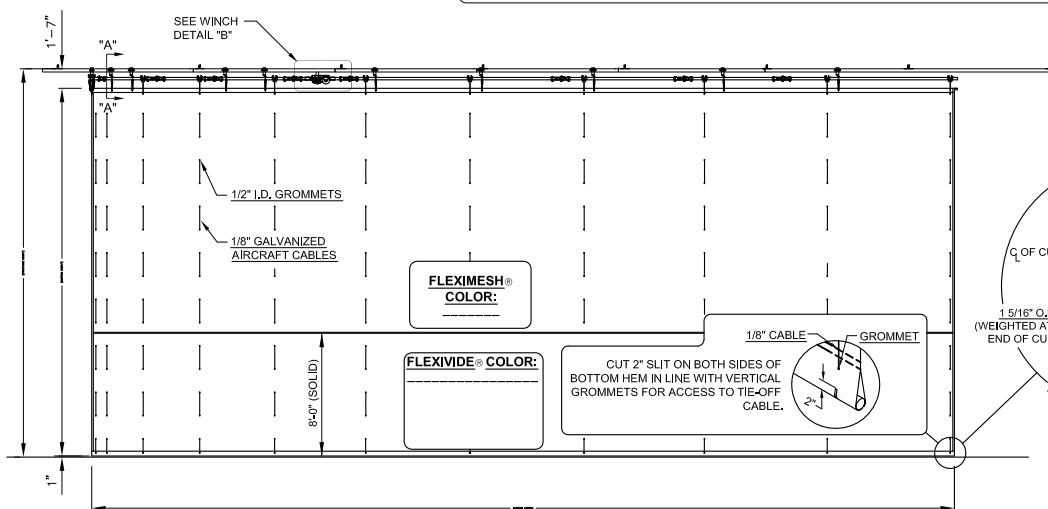
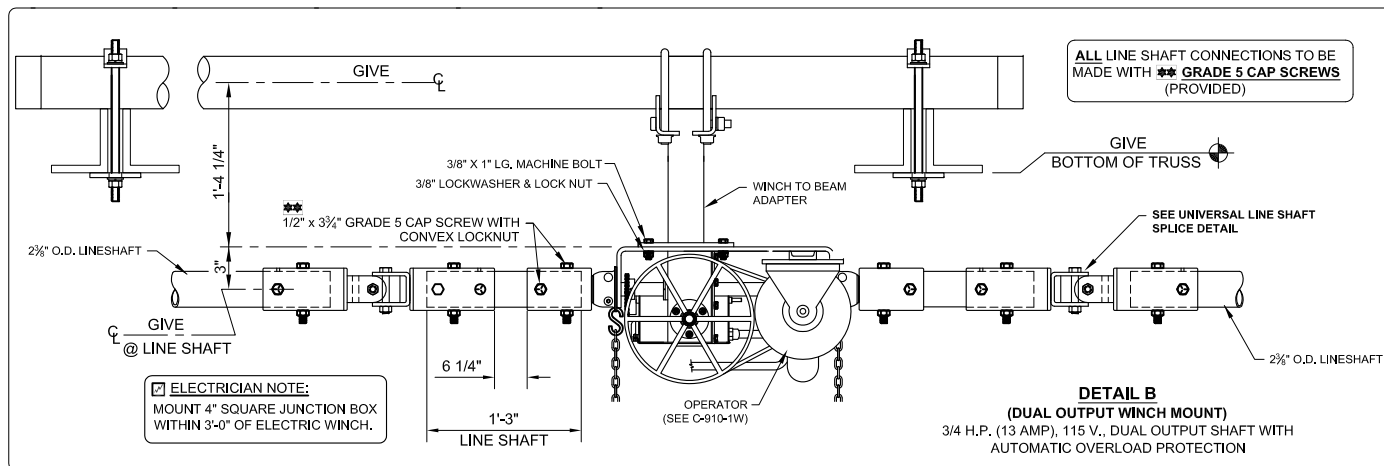
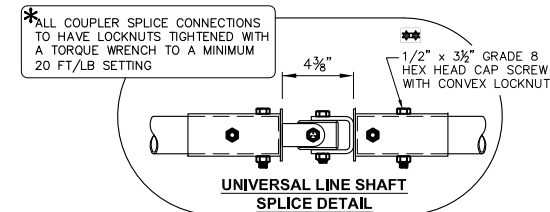
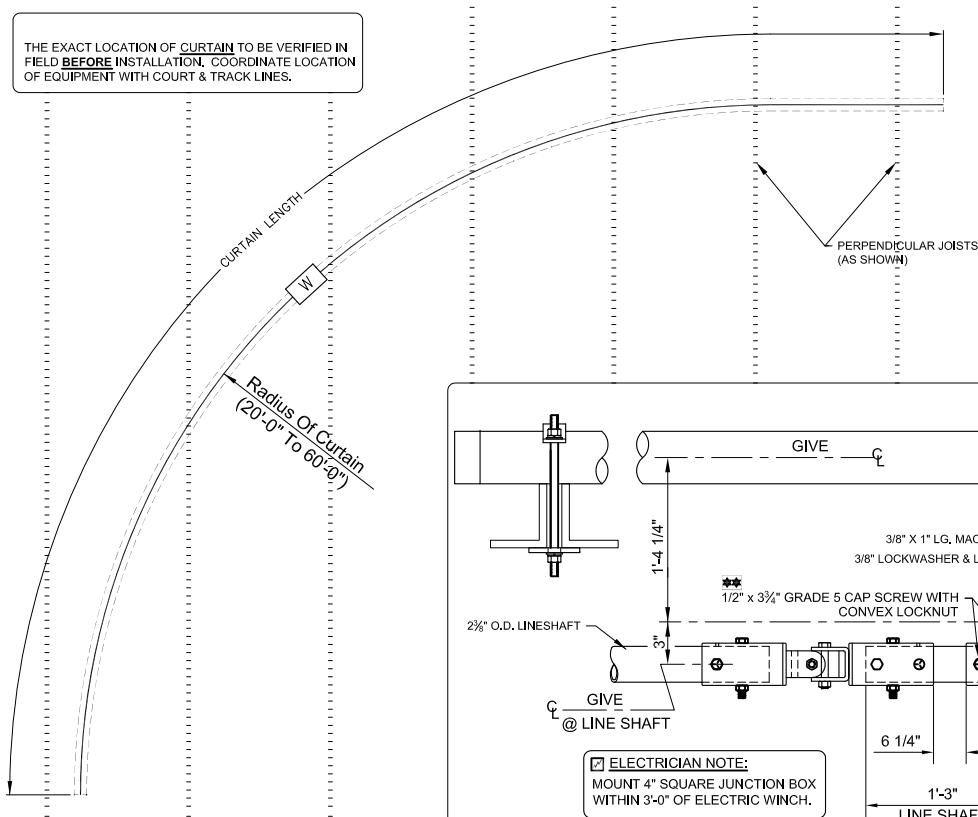


PERIMETER ROLL - FOLD DIVIDER CURTAIN
(CURTAIN OPERATOR AT CENTER)

90690-000

porter
WORLD LEADER
IN QUALITY SPORTS EQUIPMENT
601 MERCURY DRIVE
CHAMPAIGN, ILLINOIS 61822
www.porterathletic.com

THE EXACT LOCATION OF CURTAIN TO BE VERIFIED IN
FIELD **BEFORE** INSTALLATION. COORDINATE LOCATION
OF EQUIPMENT WITH COURT & TRACK LINES.



— 90690-000 PERIMETER ROLL-FOLD GYMNASIUM DIVIDER CURTAIN (Curtain Operator at Center)
MAXIMUM SIZE = 125'-0" Lg. AND 3,500 Sq. Ft.
SOLID FLEXIVIDE® COLOR: _____, FLEXIMESH® COLOR: _____

90690-000 - PERIMETER ROLL DIVIDER CURTAIN

PERIMETER ROLL - FOLD DIVIDER CURTAIN (CURTAIN OPERATOR AT CENTER) SPECIFICATIONS

PORTER No. 90690-000 PERIMETER CURTAIN (Curtain Operator at Center)

The 690 Curtain is available in the following configurations:

- Solid & Mesh (as specified below)
- All Solid
- All Mesh
- Solid & Mesh with Padded Bottom Tube
- All Solid with Padded Bottom Tube
- All Mesh with Padded Bottom Tube

Lower section of curtain shall be 8'-0" high Flexivide® solid vinyl, polyester reinforced 18 oz. vinyl coated fabric (per square yard, containing antibacterial, fungi-resistant and flame-retardant chemicals to meet requirements of ASTM E-84 Class A Rating (25 Flame Spread, 450 Smoke Development), and NFPA-701 large scale, ULC S-109 large and small scale, and State of California test requirements). Flexivide® colors available – Navy Blue, Royal Blue, Light Blue, Dark Green, Kelly Green, Yellow Gold, Tan, Purple, Orange, Red, Maroon, White, Gray, and Black (specify).

Upper section of curtain shall be of Fleximesh®, designed for air breathing areas in gym dividers, tennis screens or other custom air transfer applications. Fleximesh® material shall be an open polyester type interlocking grid weave coated with polyvinyl chloride with an approximate 45 to 50% open area. Weight of material = 7 oz. per square yard. Flame resistant (meets California Health and Safety Code Section 13115 Large and Small Scale Test, Fed. Std. 191A, CPAI-84, NFPA 701, BIFMA F-1-78, MSHA-155). Fleximesh® begins at a standard height of 8'-0" above the floor (specify if other height is required). Fleximesh® colors available – Gray, White, Black, Royal Blue or Red (specify).

Curtain may also be furnished in all-solid (Flexivide®) or all-mesh (Fleximesh®) if required - specify.

Top of curtain to be fabricated with a pocket to conceal continuous 1-5/16" O.D. steel tube extending the full length of the curtain to ensure proper support. Tube shall be supported from roller assembly supports on adjustable chains not exceeding 12'-0" centers.

Curtain shall be hoisted by 1/8" dia. vandal-proof galvanized cable (2,100 lb. breaking strength each cable, spaced between 10'-0" and 12'-0" apart) passing thru metal spur grommet type cable guides on approximate 18" centers. Bottom end of cables to terminate around 1-5/16" O.D. tube in bottom pocket, secured with concealed nicropress, swaged type clamps. (Add for curtains with padded bottom tube - Bottom support tube shall be encased in a 2-1/8" O.D., closed cell shock absorbing type protective foam rubber padding). Cables shall be routed thru cable guides to fold the curtain in a compact accordion fold arrangement, which lies across bottom support tube as curtain is hoisted. D-ring hoist systems shall not be approved as equal.

Upper ends of hoist cables shall terminate into individual hoist drums positioned on continuous zinc-plated 2-3/8" O.D. tube line shaft arrangement. Line shaft shall turn in special support assemblies equipped with four steel ball bearing wheel rollers. Each support assembly shall be positioned adjacent to a cable hoist drum. Support assemblies shall be secured to structural roof framing supports by means 2"x 3" steel angle and 2-3/8" OD drop weldments to provide structural integrity to the curtain.

All metal parts not zinc-plated shall be painted one (1) coat of flat black enamel. (If special painting or colors are required, specify final painting by painting contractor.)

Divider curtain vinyl and mesh to be low emitting and certified to meet all the requirements of the GREENGUARD Children & Schools and GREENGUARD certification program. Manufacturer to provide certificate and/or test results upon request.

See Page No. C-910-2W for specifications on 3/4 H.P. electric operator.

ISSUED JUNE 17, 2014, SUBJECT TO CURRENT MANUFACTURING PROCEDURES AND CHANGES
COPYRIGHT 2014 - PORTER ATHLETIC - ALL RIGHTS RESERVED
PORTER@PORTERATHLETIC.COM

PORTER
WWW.PORTERATHLETIC.COM/FACILITY

CURTAIN SPECIFICATION SHEET

C-690

6/17/2014