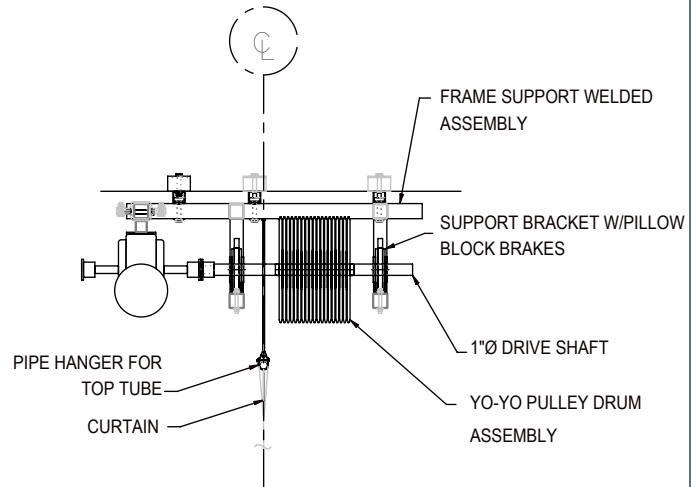
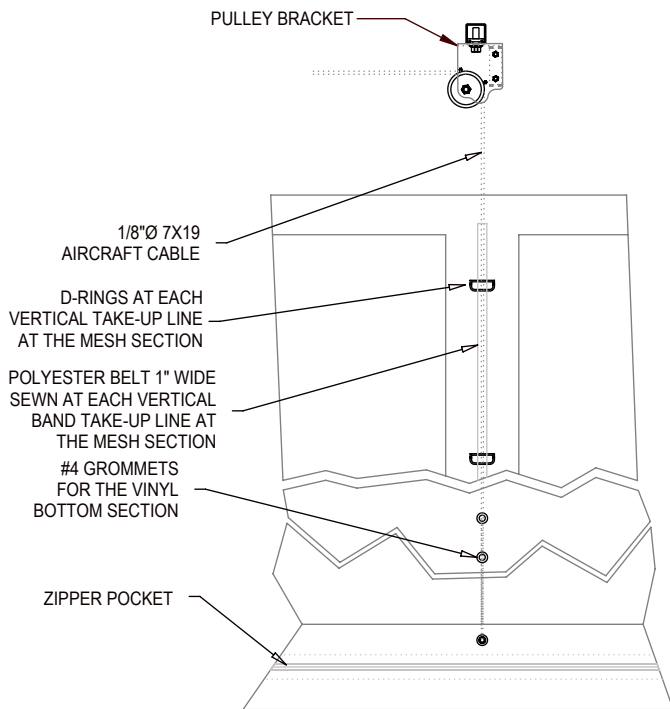
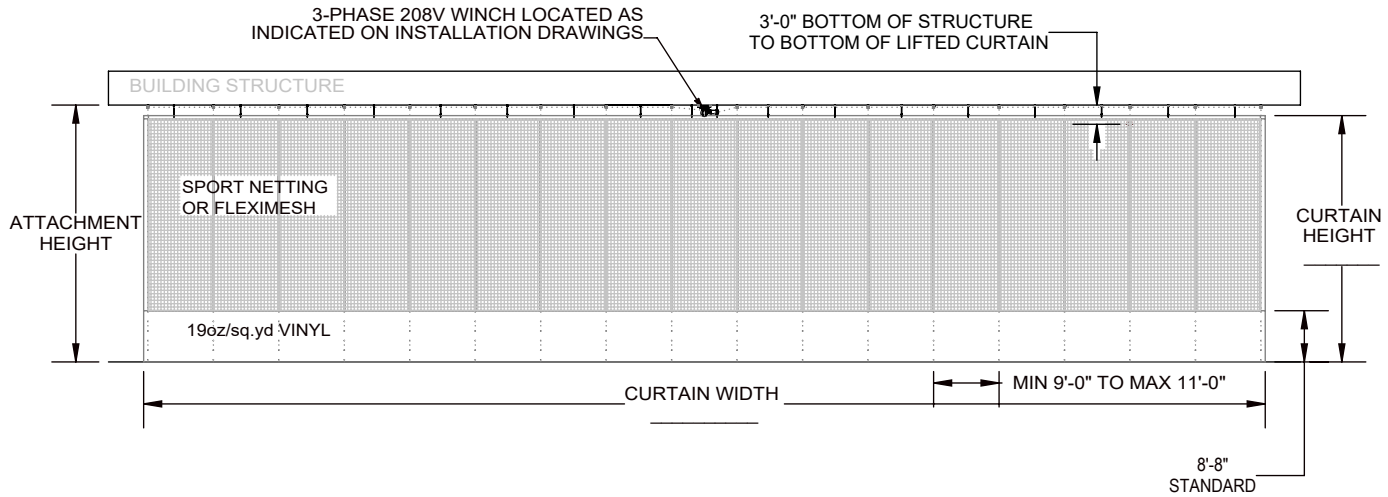


95067000 - FORM FOLD DIVIDER CURTAIN

FLAT TOP FORM FOLD CURTAIN



Porter

WWW.PORTERATHLETIC.COM/FACILITY

CURTAIN SPECIFICATION SHEET

C-5067

95067000 - FORM FOLD DIVIDER CURTAIN

FLAT TOP FORM FOLD CURTAIN

SPECIFICATIONS

PORTER No. 5067 FOLD-UP DIVIDER CURTAIN

Gym divider curtain shall be form fold-up type and shall be in one continuous section. Curtain shall be capable of reaching heights up to 100' and have no length restrictions.

Curtain shall be either polyester reinforced 19 oz. Flexivide solid vinyl coated fabric (embossed on both sides), 8 oz. mesh, and/or specified knotted netting. 19 oz. vinyl shall meet ASTM E84 Class A Rating and NFPA-701 large scale standards. Mesh shall be an open polyester type interlocking grid weave coated with polyvinyl chloride with an approximate 45 to 50% open area. Mesh shall also meet NFPA701 large scale requirements. Curtain shall be formed of welded panels with sewn edges.

Curtain shall be hoisted by 1/8" diameter 7X19 aircraft cable passing over pulleys directly above pick-up points, through D-rings and over a 1" wide polyester belt at the mesh or net section and through #4 grommets at the solid vinyl bottom section.

Top tube of curtain shall be attached to support system by swivel pipe hangers through the vinyl top pocket. Bottom pocket of curtain shall have zippered opening for ease of cable attachment to pipe during installation and maintenance. Zippered pocket eliminates possibility of pipe becoming exposed at ends of curtain. Open ended pockets shall not be considered equal.

Winch shall contain a 3hp, 60Hz, 208-230/460VAC, three-phase electric motor with an electric brake, manufactured to NEMA specifications. The motor shall be rated for a 60 minute duty cycle. Motor shall directly drive gearbox with a minimum reduction ratio of 60:1. The heat-dissipating gearbox shall contain a worm and gear set, completely sealed in a factory-filled oil bath for maintenance free service. Shaft shall be mechanically interconnected to an up-down limit switch assembly. Limit switch assembly shall be furnished in a metallic housing, complete with reversing contactors.

Apparatus shall be operable by means of the following 120V control systems: Powr-Touch 5, PowrTouch 4, Powr-Touch 2.5, and Key Switch Control.

All conduit, wiring, junction boxes, and other electrical components not specified herein shall be furnished and installed by the electrical contractor. Wiring of all electrical components shall be in accordance with local codes, and in accordance with component manufacturer's instructions. Electrician must provide three phase wiring for winch and 3 wires for control system plus a ground wire.

Curtain shall have minimum drive speed of 30 ft/min.

WARRANTY

- Hardware provided with a 1 year limited warranty.
- Vinyl provided with a 1 year limited warranty

ACCESSORIES

- Audible Motion Alarm (Optional)

COLOR OPTIONS

- See SMPL00048035 for Vinyl and SMPL00048036 for Mesh