

90920665 - FORM FOLD BATTING CAGE

CEILING-SUSPENDED FORM FOLD BATTING CAGE CUSTOM SIZED

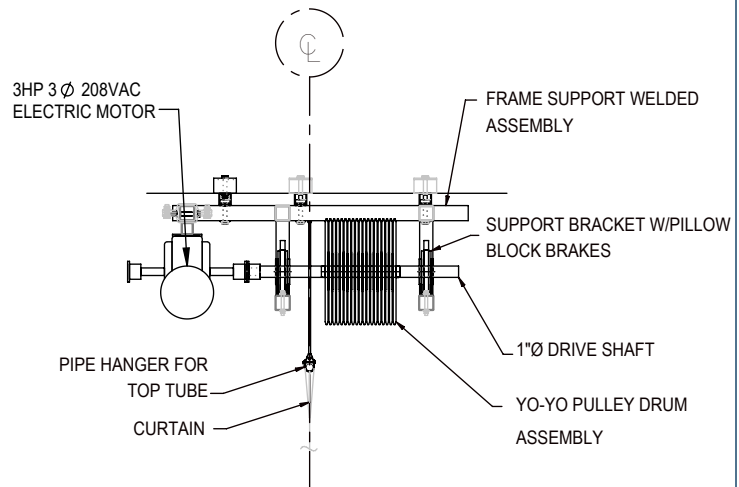
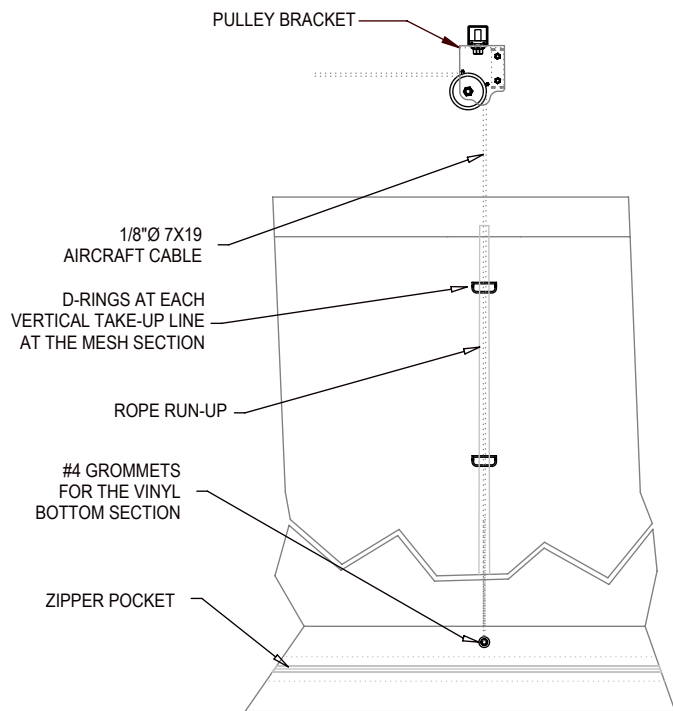
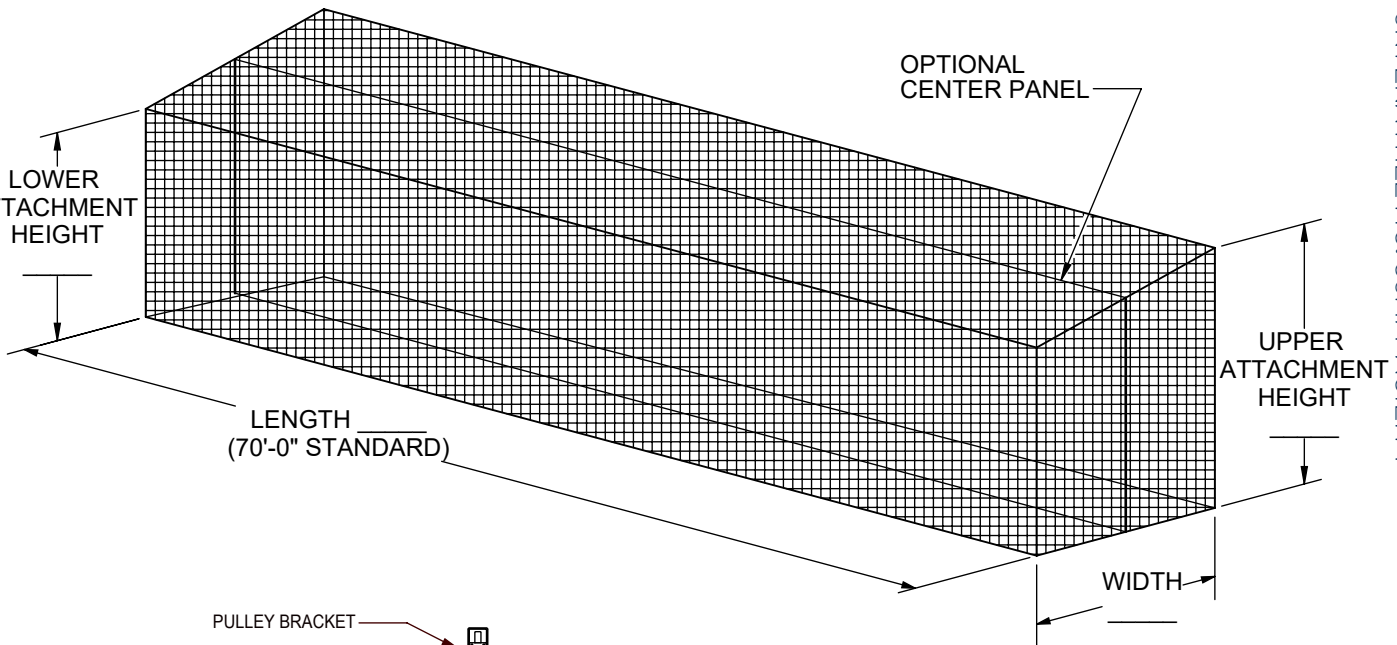
Porter

WWW.PORTERATHLETIC.COM/FACILITY

BATTING CAGE SPECIFICATION SHEET

C-920-665

5/7/2020



90920665 - FORM FOLD BATTING CAGE

FORM FOLD BATTING CAGE

SPECIFICATIONS

PORTER No. 920665 FOLD-UP BATTING CAGE

Batting cage shall be form fold-up type and shall have four sides and a top. Access shall be through two zippered doors at opposite corners. Cage shall be capable of reaching heights up to 100' and have no length restrictions.

Cage shall be constructed of either knotless or knotted netting. Cage shall have a zippered pocket around the entire bottom perimeter. Zippered pocket eliminates possibility of pipe becoming exposed at ends of curtain. Open ended pockets shall not be considered equal. Bottom pocket shall be constructed of 19 oz. vinyl. 19 oz. vinyl shall meet ASTM E84 Class A Rating and NFPA-701 large scale standards.

Cage shall be hoisted by 1/8" diameter 7X19 aircraft cable passing over pulleys directly above pick-up points, through rings at rope run-ups along sides of cage and through #4 grommets at the solid vinyl bottom section.

Top of cage shall be attached to a pulley and track bracket system by double carrier #10 single jack chain through snap hooks into #4 spur grommets at ends of flat straps or in vinyl top pocket. Chains shall be spaced at 18" center-to-center at top of cage.

Winch shall contain a 3hp, 60Hz, 208-230/460VAC, three-phase electric motor with an electric brake, manufactured to NEMA specifications. The motor shall be rated for a 60 minute duty cycle. Motor shall directly drive gearbox with a minimum reduction ratio of 60:1. The heat-dissipating gearbox shall contain a worm and gear set, completely sealed in a factory-filled oil bath for maintenance free service. Shaft shall be mechanically interconnected to an up-down limit switch assembly. Limit switch assembly shall be furnished in a metallic housing, complete with reversing contactors.

Apparatus shall be operable by means of the following 120V control systems: Powr-Touch 5, PowrTouch 4, Powr-Touch 2.5, and Key Switch Control.

All conduit, wiring, junction boxes, and other electrical components not specified herein shall be furnished and installed by the electrical contractor. Wiring of all electrical components shall be in accordance with local codes, and in accordance with component manufacturer's instructions. Electrician must provide three phase wiring for winch and 3 wires for control system plus a ground wire.

Cage shall have minimum drive speed of 30 ft/min.

WARRANTY

- Hardware provided with a 1 year limited warranty.
- Netting provided with a 1 year limited warranty

ACCESSORIES

- Audible Motion Alarm (Optional)

NETTING OPTIONS

- See NET SELECTION GUIDE for netting options

PORTER
WWW.PORTERATHLETIC.COM/FACILITY

BATTING CAGE SPECIFICATION SHEET

C-920-665

5/7/2020