

1976 POWR-RIB II VOLLEYBALL SYSTEM

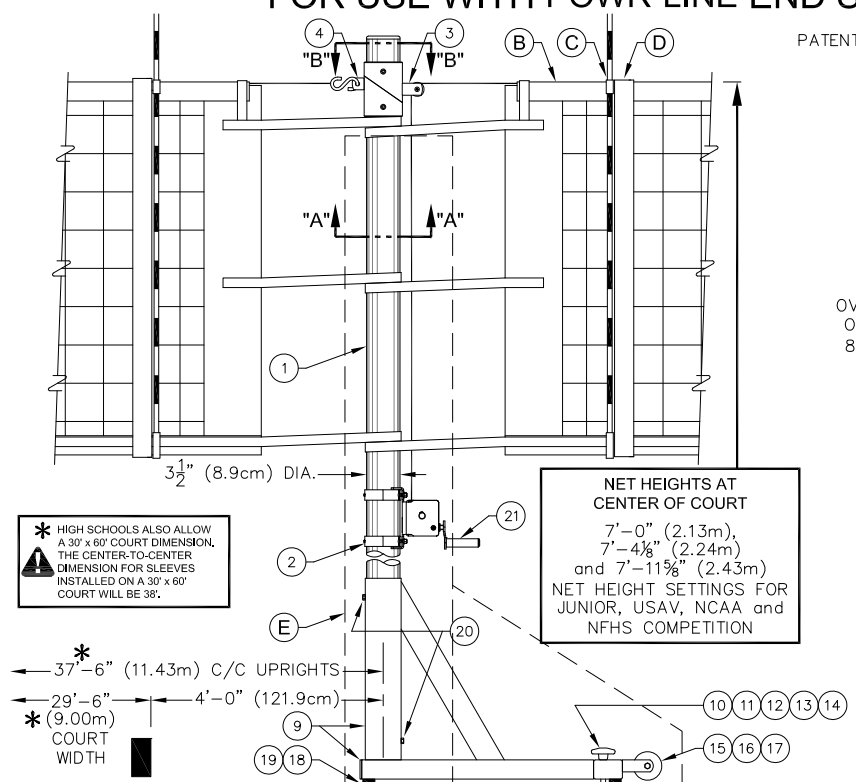
PORTER
WWW.PORTERATHLETIC.COM/FACILITY

VOLLEYBALL SPECIFICATION SHEET

V-1976

PORTABLE 3 1/2" OD ALUMINUM VOLLEYBALL CENTER STANDARD FOR USE WITH POWR-LINE END STANDARDS

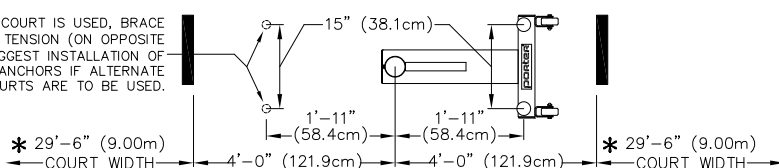
PATENT No. 6,089,995



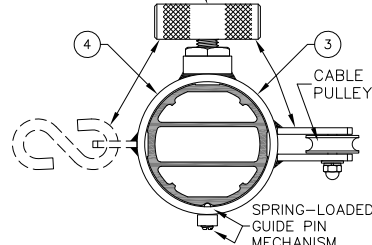
| PARTS LIST - No. 1976 | |
|-----------------------|------|
| No. | QTY. |
| 1 | 1 |
| 2 | 1 |
| 3 | 1 |
| 4 | 1 |
| 5 | 1 |
| 6 | 1 |
| 7 | 1 |
| 8 | 1 |
| 9 | 1 |
| 10 | 2 |
| 11 | 2 |
| 12 | 2 |
| 13 | 2 |
| 14 | 2 |
| 15 | 2 |
| 16 | 2 |
| 17 | 2 |
| 18 | 3 |
| 19 | 6 |
| 20 | 2 |
| 21 | 1 |

NOTE - WHEN SINGLE COURT IS USED, BRACE ON T-BASE MUST BE IN TENSION (ON OPPOSITE SIDE OF NET) - SUGGEST INSTALLATION OF TWO ADDITIONAL FLOOR ANCHORS IF ALTERNATE SINGLE COURTS ARE TO BE USED.

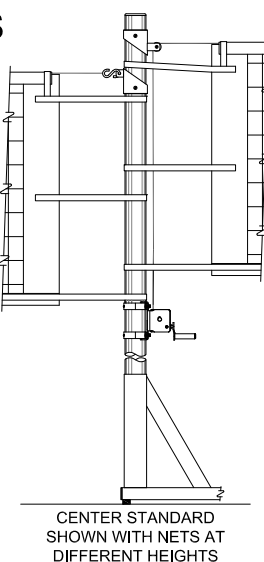
PLAN VIEW
SHOWING BASE
AND FLOOR
ANCHOR LAYOUT



PRESSURE-LOCKING
T-HANDLE FOR INFINITE
NET HEIGHT ADJUSTMENTS



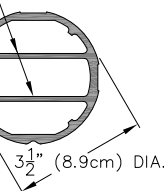
SECTION "B-B"
NET HEIGHT ADJUSTMENT
COLLAR ASSEMBLY



EXTRUDED ALUMINUM DUAL
REINFORCING RIB SECTION
IN LINE WITH NET TENSION

HEIGHT LABELS APPLIED
TO SIDE OF UPRIGHT

SECTION "A-A"
EXTRUDED ALUMINUM
UPRIGHT



-1976 POWR-RIB II PORTABLE CENTER STANDARD (EACH)
FOR USE WITH No. 1975 POWR-RIB® II END STANDARDS

- 19769XX POWR-RIB II PORTABLE CENTER STANDARD
WITH PAD (EACH)- 3 1/2" OD

- 19769XXSP POWR-RIB II PORTABLE CENTER STANDARD
WITH GRAPHIC PAD (EACH)- 3 1/2" OD

| QTY | PART No. | DESCRIPTION | No. | PAGE No. |
|-----|----------|----------------------------------------|-----|----------|
| | VARIOUS | FLOOR ANCHORS (NOT SHOWN) SPECIFY TYPE | | VARIOUS |
| | 2295 | UNIVERSAL VOLLEYBALL NET (EACH) | B | V-2295 |
| | 2297 | POWR-SELECT NET ANTENNA (PAIR) | C | V-2297 |
| | 00546000 | BOUNDARY MARKERS w/ ANTENNA (PAIR) | D | V-546 |
| | 8361XX | CENTER PROTECTIVE PAD (EACH) | E | V-836 |
| | 02991340 | TENNIS NET - 34' X 39" (NOT SHOWN) | | V-2991 |

PORTER®
888-277-7778 PORTER@PORTERATHLETIC.COM
© COPYRIGHT 2020 PORTER ATHLETIC - ALL RIGHTS RESERVED

PROJECT NUMBER

PROJECT NAME

02/27/2020

1976 POWR-RIB II VOLLEYBALL SYSTEM

PORTABLE 3½" OD ALUMINUM VOLLEYBALL CENTER STANDARD
FOR USE WITH POWR-LINE END STANDARDS
SPECIFICATIONS

PORTER No. 1976 POWR-RIB II PORTABLE VOLLEYBALL CENTER **STANDARD (EACH)** **FOR USE WITH POWR-RIB II END STANDARDS**

PATENT No. 6,089,995

Standard shall be designed for multiple court use when used in conjunction with No. 1975 Powr-Rib II volleyball end standards.

Post shall be provided in a high strength (6063T6), lightweight aluminum alloy, designed with dual internal reinforcing ribs to provide maximum rigidity and minimum deflection. Post to be finished in a durable clear anodized finish. Top end of upright post shall be fitted with a special molded, composite type cap.

Upright shall be 3-1/2" (8.9cm) O.D. to fit into T-Base assembly.

Bottom end of upright shall be supported in a compact, 18-1/2" x 31-1/2" (47cm x 80cm), T-Shaped, unitized steel base assembly incorporating a 3-3/4" (9.5cm) O.D. x 19" (48.3cm) long, heavy-wall sleeve with two (2) set screws to lock upright in position. Sleeve shall be rigidly braced to T-Base with a unitized type rectangular, 2-1/2" x 1-1/2" (6.3cm x 3.8cm) steel tube type gusset member to rigidly brace entire unit. Base shall be finished in a durable, blue powder-coat finish.

Base shall be furnished with two (2), 3" (7.6cm) diameter, non-marking casters located to easily tip and roll standard to and from storage areas. Base assembly shall also be provided with two (2) spring-loaded handwheel/threaded stud (1/2-13) assemblies for anchoring into floor anchors. Specify type of floor anchor required – two (2) per base. Base shall also incorporate three (3) non-marking gray rubber floor pads.

Upright post shall be furnished with dual, split net height adjustment collar assemblies that provide the option of having the same or different net heights on adjacent courts. Adjustment collars are provided with a pressure locking, T-handle mechanism for instant net height settings for tennis, badminton, and volleyball to meet all USAV, NCAA and NFHS requirements for competition. Post shall be furnished with height marking labels for BOYS'/MEN'S height setting of 7' 11-5/8" (2.43m), GIRLS'/WOMEN'S height setting of 7' 4-1/8" (2.24m), 12 YEAR AND UNDER height setting of 7'-0" (2.13m), and BADMINTON height setting of 5'-0" (1.52m).

Adjustable collar assemblies shall be positioned on a vertical axis by means of an external groove in the extruded aluminum upright, which is engaged by a spring-loaded ball/pin mechanism to prevent rotational movement of the collar. A pressure locking, threaded T-handle assembly shall be located on the opposite side of the collar assembly and shall tighten securely against a flat, extruded channel indent on the upright post for a positive locking system.

Tensioning reel shall be a vertical lift, worm gear winch with steel frame. Frame construction shall be of interlocking steel for high rigidity and precise alignment, semi enclosed for safety, and powder coated for corrosion resistance. Self-locking worm drive will prevent snap back or loss of tension. Net shall attach directly to the winch eliminating the need for straps.

NET SELECTION

- Specify No. 2235 tennis net if 42'-0" sleeve centers are used.
- Specify No. 02991340 tennis net if 35'-6" sleeve centers are used.
- Specify No. 2236110 net for badminton application.

WARRANTY

Volleyball system furnished with the following warranty:

- Uprights – 10 year limited warranty
- Winch – 1 year limited warranty

ISSUED FEBRUARY 27, 2020, SUBJECT TO CURRENT MANUFACTURING PROCEDURES AND CHANGES
COPYRIGHT 2020 - PORTER ATHLETIC - ALL RIGHTS RESERVED
PORTER@PORTERATHLETIC.COM

porter
WWW.PORTERATHLETIC.COM/FACILITY

VOLLEYBALL SPECIFICATION SHEET

V-1976

02/27/2020