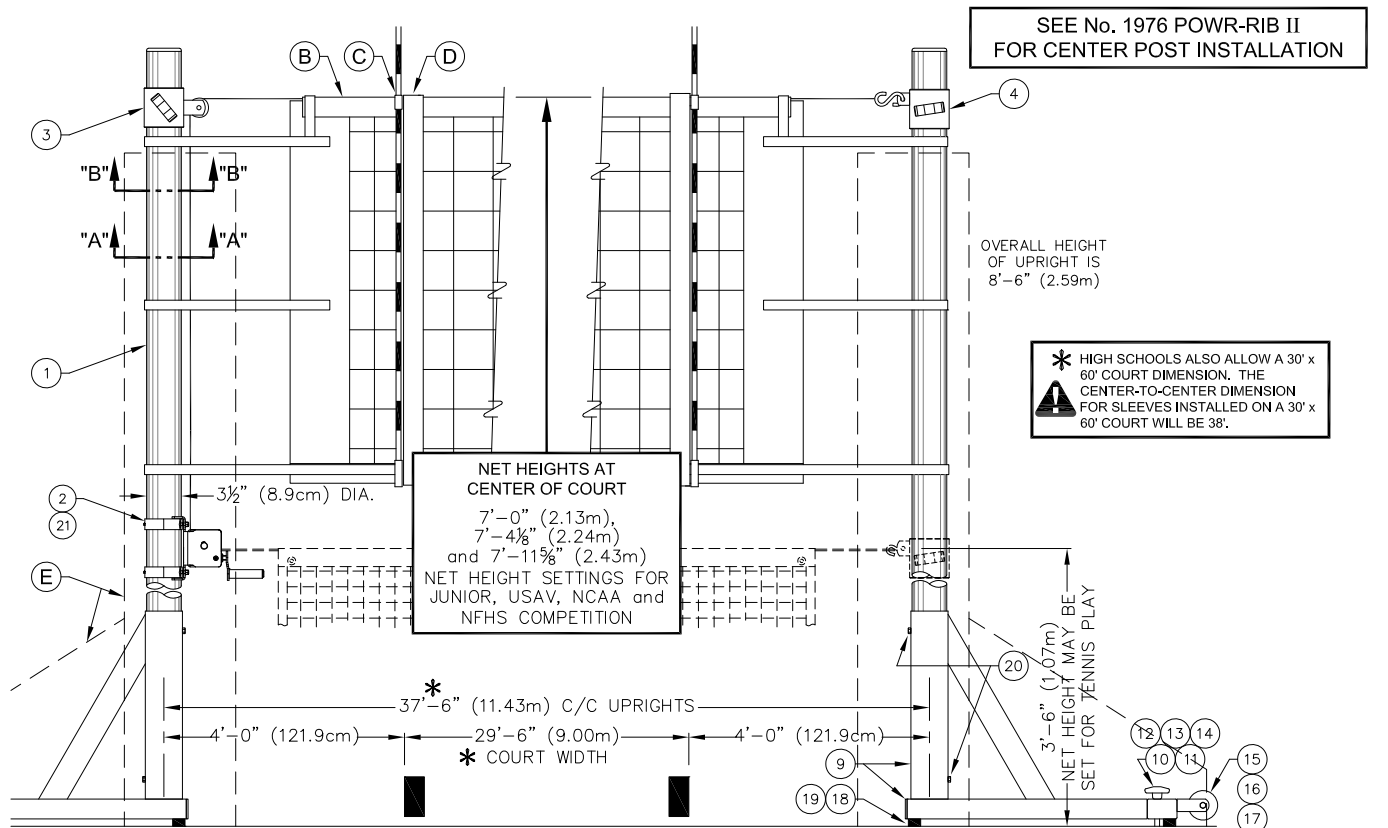
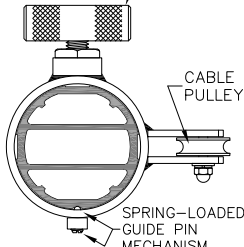


1975 POWR-RIB II VOLLEYBALL SYSTEM

PORTABLE 3 1/2" OD ALUMINUM VOLLEYBALL END STANDARDS



PRESSURE-LOCKING
T-HANDLE FOR INFINITE
NET HEIGHT ADJUSTMENTS



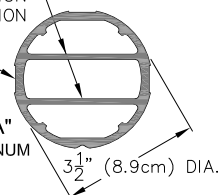
SECTION "B-B"
NET HEIGHT ADJUSTMENT
COLLAR ASSEMBLY

PARTS LIST - No. 1975				
No.	QTY.	DESCRIPTION		
1	2	UPRT 00308 000	UPRIGHT ASSEMBLY	
2	1	WINH 00113	POWR-SELECT WINCH	
3	1	SLVE 00070 001	SLEEVE WITH PULLEY	
4	1	SLVE 00071 001	SLEEVE WITH NET TIE-OFF	
5	2	LABL 00167 000	HEIGHT LABEL - 7' 11-5/8"	
6	2	LABL 00168 000	HEIGHT LABEL - 7' 4-1/8"	
7	2	LABL 00169 001	HEIGHT LABEL - 7'-0"	
8	2	LABL 00170 000	HEIGHT LABEL - BADMINTON	
9	2	BASE 00103 001	T-BASE	
10	4	HAND 00001 000	HANDWHEEL WITH STUD	
11	4	SPNG 00004 000	SPRING	
12	4	HDWE 55007 000	1/2" NYLON FLATWASHER	
13	4	HDWE 05005 0E0	1/2" FLATWASHER	
14	4	HDWE 55008 0E0	1/2" RETAINER WASHER	
15	4	CSTR 00001 000	WHEEL	
16	4	HDWE 01208 0E0	3/8" x 2-1/2" Lg. BOLT	
17	4	HDWE 03005 0E0	3/8" LOCKING CAP NUT	
18	6	FEET 00002 000	RUBBER FOOT	
19	12	HDWE 06016 000	1/4" x 3/4" Lg. CAP SCREW	
20	4	HDWE 09015 000	5/16" x 3/8" Lg. SET SCREW	
21	1	WINH 00114	CRANK FOR POWR-SELECT WINCH	

EXTRUDED ALUMINUM DUAL
REINFORCING RIB SECTION
IN LINE WITH NET TENSION

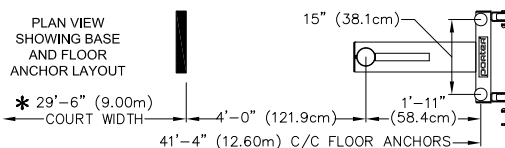
HEIGHT LABELS APPLIED
TO SIDE OF UPRIGHT

SECTION "A-A"
EXTRUDED ALUMINUM
UPRIGHT



- 1975 POWR-RIB II PORTABLE VOLLEYBALL STANDARDS (PAIR)
- 1975XX POWR-RIB II PORTABLE VOLLEYBALL STANDARDS W/ PAD (PAIR)
- 1975XXSP POWR-RIB II PORTABLE VOLLEYBALL STANDARDS W/ GRAPHIC PAD (PAIR)

PLAN VIEW
SHOWING BASE
AND FLOOR
ANCHOR LAYOUT



QTY	PART No.	DESCRIPTION	No.	PAGE No.
	VARIOUS	FLOOR ANCHORS (NOT SHOWN) SPECIFY TYPE		VARIOUS
	2295	UNIVERSAL VOLLEYBALL NET	B	V-2295
	2297	POWR-SELECT NET ANTENNA (PAIR)	C	V-2297
	00546000	BOUNDARY MARKERS w/ ANTENNA (PAIR)	D	V-546
	8360XX	SET OF PROTECTIVE PADS (PAIR)	E	V-836
	02991340	TENNIS NET - 34' x 39" (NOT SHOWN)		V-2991
	00889-100	JUDGE'S STAND (NOT SHOWN)		V-889-1
	9931XX	PADS FOR JUDGE'S STAND (NOT SHOWN)		V-993-1

Porter

PROJECT NUMBER

888-277-7778 PORTER@PORTERATHLETIC.COM
© COPYRIGHT 2020 PORTER ATHLETIC - ALL RIGHTS RESERVED

PROJECT NAME

Porter

VOLLEYBALL SPECIFICATION SHEET

V-1975

02/27/2020

1975 POWR-RIB II VOLLEYBALL SYSTEM

PORTABLE 3½" OD ALUMINUM VOLLEYBALL END STANDARDS

SPECIFICATIONS

PORTER No. 1975 POWR-RIB II PORTABLE VOLLEYBALL STANDARDS (PAIR)

Posts shall be provided in a high strength (6063T6), lightweight aluminum alloy, designed with dual internal reinforcing ribs to provide maximum rigidity and minimum deflection. Posts to be finished in a durable clear anodized finish. Top end of upright posts shall be fitted with a special molded, composite type cap.

Upright shall be 3-1/2" (8.9cm) O.D. to fit into T-Base assembly.

Bottom end of uprights shall be supported in a compact, 18-1/2" x 31-1/2" (47cm x 80cm), T-Shaped, unitized steel base assembly incorporating a 3-3/4" (9.5cm) O.D. x 19" (48.3cm) long, heavy-wall sleeve with two (2) set screws to lock upright in position. Sleeve shall be rigidly braced to T-Base with a unitized type rectangular, 2-1/2" x 1-1/2" (6.3cm x 3.8cm) steel tube type gusset member to rigidly brace entire unit. Base shall be finished in a durable, powder-coat finish.

Base shall be furnished with two (2), 3" (7.6cm) diameter, non-marking casters located to easily tip and roll standard to and from storage areas. Base assembly shall also be provided with two (2) spring-loaded handwheel/threaded stud (1/2-13) assemblies for anchoring into floor anchors. Specify type of floor anchor required – two (2) per base. Base shall also incorporate three (3) non-marking gray rubber floor pads.

Upright posts shall be equipped with special sliding collar devices incorporating a spring-loaded guide pin and positive pressure locking T-handle mechanism for instant net height settings for tennis, badminton and volleyball, to meet all USAV, NCAA and NFHS requirements for competition. Posts shall be furnished with height marking labels for BOYS'/MEN'S height setting of 7' 11-5/8" (2.43m), GIRLS'/WOMEN'S height setting of 7' 4-1/8" (2.24m), 12 YEAR AND UNDER height setting of 7'-0" (2.13m), and BADMINTON height setting of 5'-0" (1.52m).

Adjustable collar assemblies shall be positioned on a vertical axis by means of an external groove in the extruded aluminum upright, which is engaged by a spring-loaded ball/pin mechanism to prevent rotational movement of the collar. A pressure locking, threaded T-handle assembly shall be located on the opposite side of the collar assembly and shall tighten securely against a flat, extruded channel indent on the upright post for a positive locking system.

Tensioning reel shall be a vertical lift, worm gear winch with steel frame. Frame construction shall be of interlocking steel for high rigidity and precise alignment, semi enclosed for safety, and powder coated for corrosion resistance. Self-locking worm drive will prevent snap back or loss of tension. Net shall attach directly to the winch eliminating the need for straps.

Standards shall consist of one reel post and one end post. (For multiple court usage, specify additional No.1976 Powr-Rib II center standards as required).

NET SELECTION

Specify No. 2235 tennis net if 42'-0" sleeve centers are used.

Specify No. 02991340 tennis net if 35'-6" sleeve centers are used.

Specify No. 2236110 net for badminton application.

WARRANTY

Volleyball system furnished with the following warranty:

Uprights – 10 year limited warranty

Winch – 1 year limited warranty