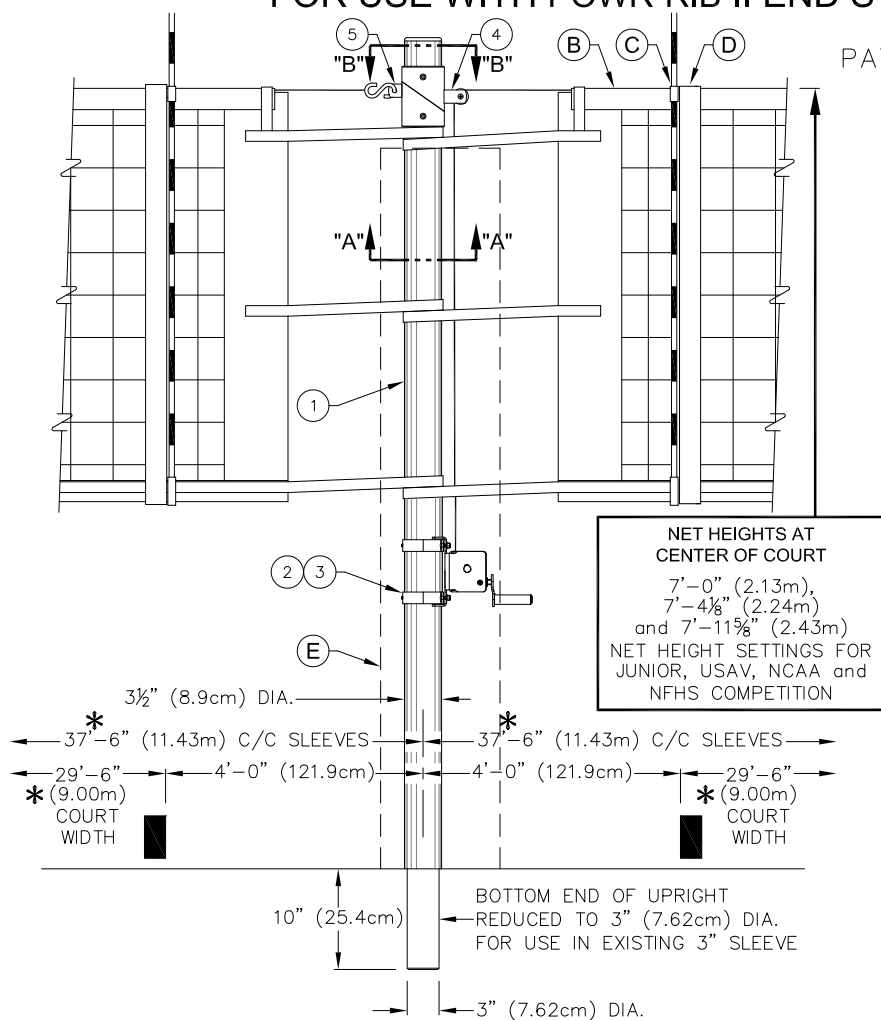


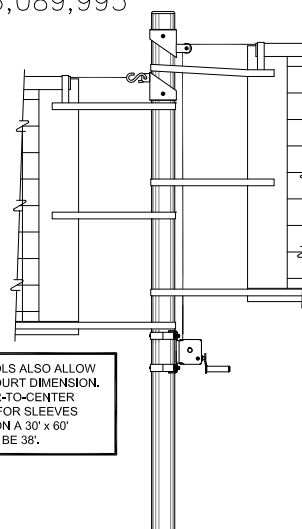
1974 POWR-RIB II VOLLEYBALL SYSTEM

SLEEVE-TYPE 3" OD ALUMINUM VOLLEYBALL CENTER STANDARD FOR USE WITH POWR-RIB II END STANDARDS

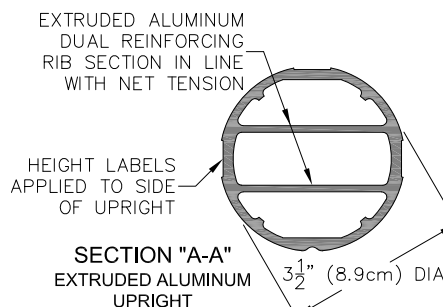
PATENT No. 6,089,995



* HIGH SCHOOLS ALSO ALLOW
A 30' x 60' COURT DIMENSION.
THE CENTER-TO-CENTER
DIMENSION FOR SLEEVES
INSTALLED ON A 30' x 60'
COURT WILL BE 38'.

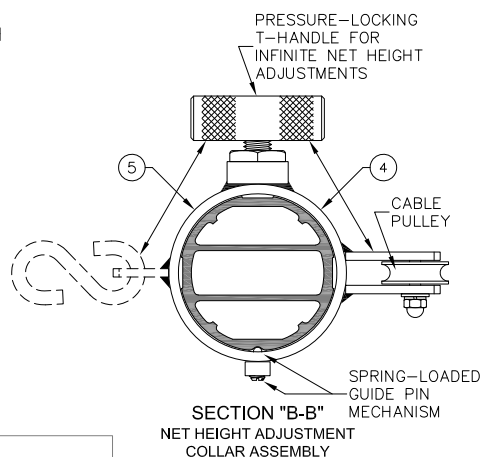


CENTER STANDARD
SHOWN WITH NETS AT
DIFFERENT HEIGHTS



PARTS LIST - No. 1974	
No.	QTY.
1	UPRT 00305 000 UPRIGHT ASSEMBLY
2	WNH 00113 POWR-SELECT WINCH
3	WNH 00114 CRANK FOR POWR-SELECT WINCH
4	SLVE 00093 001 SLEEVE WITH PULLEY
5	SLVE 00094 001 SLEEVE WITH NET TIE-OFF
6	LABL 00167 000 HEIGHT LABEL - 7'-11 1/8"
7	LABL 00168 000 HEIGHT LABEL - 7'-4 1/8"
8	LABL 00169 001 HEIGHT LABEL - 7'-0"
9	LABL 00170 000 HEIGHT LABEL - BADMINTON

OVERALL LENGTH
OF UPRIGHT IS
9'-3 1/2" (2.83m)



- _____ -1974 POWR-RIB II VOLLEYBALL CENTER STANDARD (EACH)
FOR USE WITH No. 1973 POWR-RIB II END STANDARDS
- _____ - 19749XX POWR-RIB II VOLLEYBALL CENTER STANDARD
WITH PAD (EACH)- 3" OD
- _____ - 19749XXSP POWR-RIB II VOLLEYBALL CENTER STANDARD
WITH GRAPHIC PAD (EACH)- 3" OD

QTY	PART No.	DESCRIPTION	No.	PAGE No.
	2295	UNIVERSAL VOLLEYBALL NET	B	V-2295
	2297	POWR-SELECT NET ANTENNA (PAIR)	C	V-2297
	00546000	BOUNDARY MARKERS w/ ANTENNA (PAIR)	D	V-546
	8391XX	UPRIGHT CENTER PROTECTIVE PAD (EACH)	E	V-839
	02991340	TENNIS NET - 34' x 39" (NOT SHOWN)		V-2991

Porter

PROJECT NUMBER

PROJECT NAME

888-277-7778 PORTER@PORTERATHLETIC.COM
© COPYRIGHT 2020 PORTER ATHLETIC - ALL RIGHTS RESERVED

Porter

WWW.PORTERATHLETIC.COM/FACILITY

VOLLEYBALL SPECIFICATION SHEET

V-1974

02/27/2020

1974 POWR-RIB II VOLLEYBALL SYSTEM

SLEEVE-TYPE 3" OD ALUMINUM VOLLEYBALL CENTER STANDARD
FOR USE WITH POWR-RIB II END STANDARDS
SPECIFICATIONS

PORTER No. 1974 POWR-RIB II VOLLEYBALL CENTER
STANDARD (EACH)
FOR USE WITH POWR-RIB II END STANDARDS
PATENT No. 6,089,995

Standard shall be designed for multiple court use when used in conjunction with No. 1973 Powr-Rib® II volleyball end standards.

Post shall be provided in a high strength (6063T6), lightweight aluminum alloy, designed with dual internal reinforcing ribs to provide maximum rigidity and minimum deflection. Post to be finished in a durable clear anodized finish. Top end of upright post shall be fitted with a special molded, composite type cap.

Upright shall be 3-1/2" (8.9cm) O.D., with bottom end of upright fitted with a 3" (7.62cm) dia. x 9-1/2" (24.1cm) long, 1/4" (6.35mm) wall aluminum tube extension for use in existing 3" (7.6cm) dia. type floor sleeve.

Upright post shall be furnished with dual, split net height adjustment collar assemblies that provide the option of having the same or different net heights on adjacent courts. Adjustment collars are provided with a pressure locking, T-handle mechanism for instant net height settings for tennis, badminton, and volleyball to meet all USAV, NCAA and NFHS requirements for competition. Post shall be furnished with height marking labels for BOYS'/MEN'S height setting of 7' 11-5/8" (2.43m), GIRLS'/WOMEN'S height setting of 7' 4-1/8" (2.24m), 12 YEAR AND UNDER height setting of 7'-0" (2.13m), and BADMINTON height setting of 5'-0" (1.52m).

Adjustable collar assemblies shall be positioned on a vertical axis by means of an external groove in the extruded aluminum upright, which is engaged by a spring-loaded ball/pin mechanism to prevent rotational movement of the collar. A pressure locking, threaded T-handle assembly shall be located on the opposite side of the collar assembly and shall tighten securely against a flat, extruded channel indent on the upright post for a positive locking system.

Tensioning reel shall be a vertical lift, worm gear winch with steel frame. Frame construction shall be of interlocking steel for high rigidity and precise alignment, semi enclosed for safety, and powder coated for corrosion resistance. Self-locking worm drive will prevent snap back or loss of tension. Net shall attach directly to the winch eliminating the need for straps.

NET SELECTION

Specify No. 2235 tennis net if 42'-0" sleeve centers are used.

Specify No. 02991340 tennis net if 35'-6" sleeve centers are used.

Specify No. 2236110 net for badminton application.

WARRANTY

Volleyball system furnished with the following warranty:

Uprights – 10 year limited warranty

Winch – 1 year limited warranty