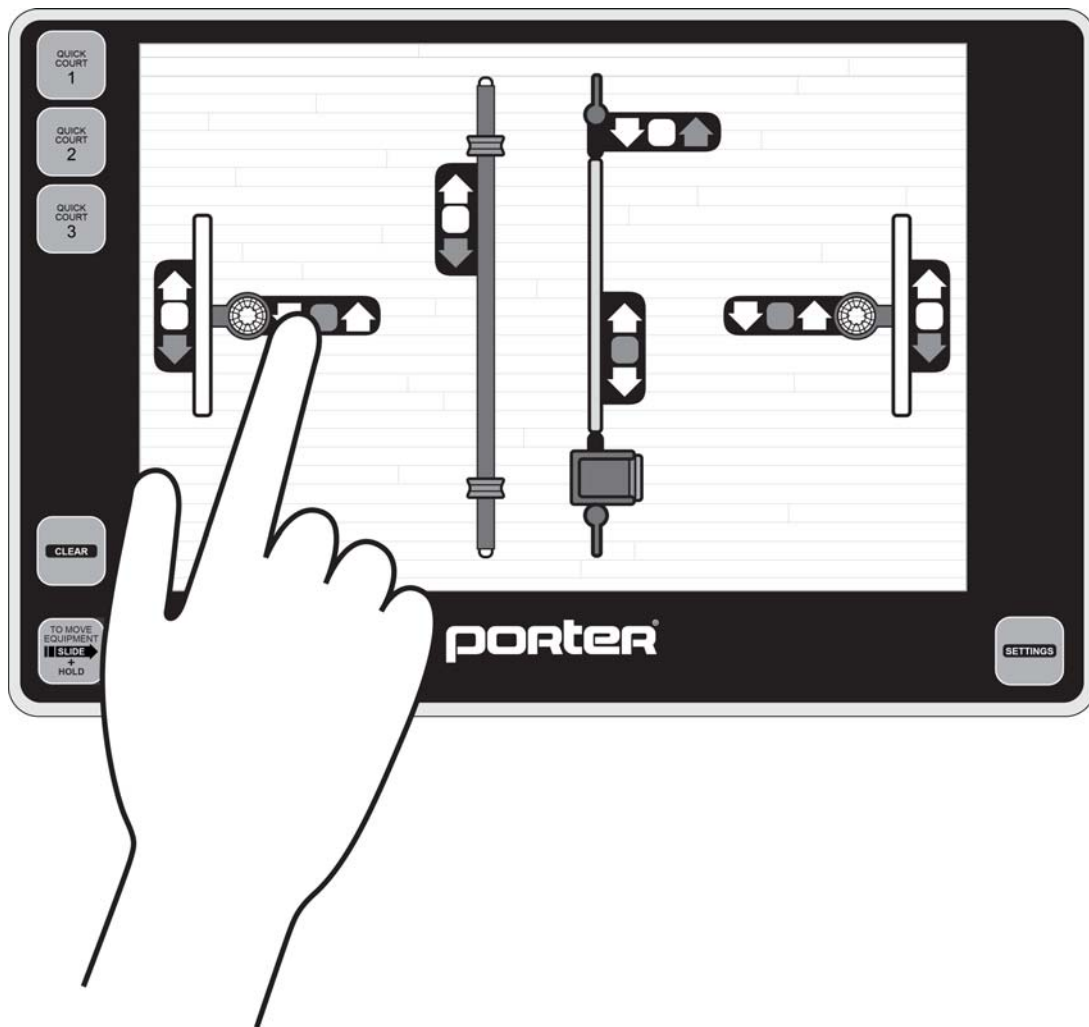


Powr-Touch 5.0

Item No.'s:

12810-012, 12810-020, 12810-028,
12810-036, 12810-044, 12810-052,
12810-062



porter®

Installation Guide

SAVE THESE INSTRUCTIONS FOR FUTURE USE



INSTRUCTIONS: Dealer and/or Installation Supervisor,
Please give this book to the Owner/Customer

GUARANTEE

All materials and workmanship of basic materials are guaranteed to be free and clear of defects. Defective material will be repaired or replaced, at our option, subsequent to complete information being received by us concerning the nature of the defect for a period of one year from the date established by the certificate of occupancy or certificate of substantial completion, whichever shall occur first or otherwise documented and signed by an officer of Porter Athletic, Inc.

NAME OF PROJECT:	

NAME OF DEALER:	NAME OF INSTALLATION COMPANY:
PHONE #:	PHONE #:

Porter Order Number _____

Date of Scheduled Shipment _____

Date of Substantial Completion _____

The gymnasium equipment for this project has been custom fabricated according to the Owner's/Architect's specification. Care has been taken to fabricate this equipment to provide years of safe, satisfactory use and trouble free service.

The key to satisfactory service is proper installation, operation and care. Should any malfunctions occur, please notify your supervisor and call your local Porter Dealer or Representative.

LIABILITY

Liability is not only an issue with the installation and maintenance of this product, but it also extends to the proper operation by the end user. The operational instructions must be read and understood before operating this equipment!

This manual for the Powr-Touch 5.0 is meant to serve as a general guideline only for the safe installation of this product. Variables must be taken into consideration which are outside of Porter's control. It is Porter's explicit requirement that this product be installed in a safe and secure manner. Any deviation from Porter installation instructions without written authorization will void all warranties. Contact the factory immediately should such a condition exist, necessitating a design revision. All electrical work shall be performed by a licensed electrician in accordance with state and local codes and ordinances.



TABLE OF CONTENTS

OVERVIEW OF MANUAL	5
INVENTORY AND TOOLS	6
INSTALLATION INSTRUCTIONS	7
TROUBLESHOOTING GUIDE	9
SAMPLE DRAWINGS	10

POWR-TOUCH 5.0 OVERVIEW OF MANUAL

WARNING

READ ALL INSTRUCTIONS THOROUGHLY BEFORE ATTEMPTING TO OPERATE THIS EQUIPMENT.

FAILURE TO COMPLY WITH THE FOLLOWING INSTRUCTIONS AND WARNINGS MAY RESULT IN SERIOUS INJURIES AND/OR PROPERTY DAMAGE.

This manual has been prepared to assist you with the installation of the Porter Powr-Touch 5.0.

We recommend that you read this manual in its entirety to become familiar with Powr-Touch 5.0 system before attempting installation. If you need additional copies of this manual, please let us know.

The safest equipment can be damaged when used by the untrained. We suggest that qualified personnel supervise all utilized equipment.

For ease of administering this maintenance program, we suggest that your equipment be numbered, and a file maintained on its location, name of manufacturer, original item number, date of purchase, and maintenance performed. This will be useful when ordering replacement parts and keeping track of maintenance. Defective equipment must be marked "*DO NOT USE*", and the circuit breaker must be turned off and also tagged "*DO NOT USE*", until replacement or repairs are completed.

Inspections should be performed periodically, depending upon the nature of the equipment and its use. When the equipment is exposed to heavy use, special inspections should be made in addition to the normal maintenance program. At the minimum, a yearly inspection of the system is recommended.

Any structural and/or electrical deviation from the Porter installation manuals and drawings, without written authorization, will void all warranties.

INVENTORY AND INSPECTION

Inventory parts listed on the packing list to ensure parts required are accounted for. Inspect all components for possible shipping damage. Report any shortages to Porter's Customer Service Department immediately. On visible freight damage, sign as damaged, and file a freight damage claim with the carrier immediately. Failure to report shortages or hidden freight damage directly to Porter's Customer Service Department within three working days will place the financial burden for the missing or replacement parts with the installer or general contractor.

PREPARATION OF INSTALLATION AREA

Ensure an adequate path is available to install equipment and sufficient space is available in the vicinity of the project. The floor should be protected with a suitable material to prevent damage to the floor or equipment, if necessary. Upon completion of installation, immediate area should be left in broom-clean condition.

TOOLS / EQUIPMENT REQUIRED

To Be Provided by the Installer:

- Scaffold or Lift (if necessary)
- Hand tools, electric drill, drop cord, vise grip pliers, etc.
- Wire cutter/stripper
- Measuring tape, Laser Measuring Device
- Level, Plumb Bob, Laser Plumb
- Electronic Test Box (02080-PWR)
- OPTIONAL: ELEC00201000— "cheater box" for powering equipment with extension chord

INSTALLATION OF PANEL

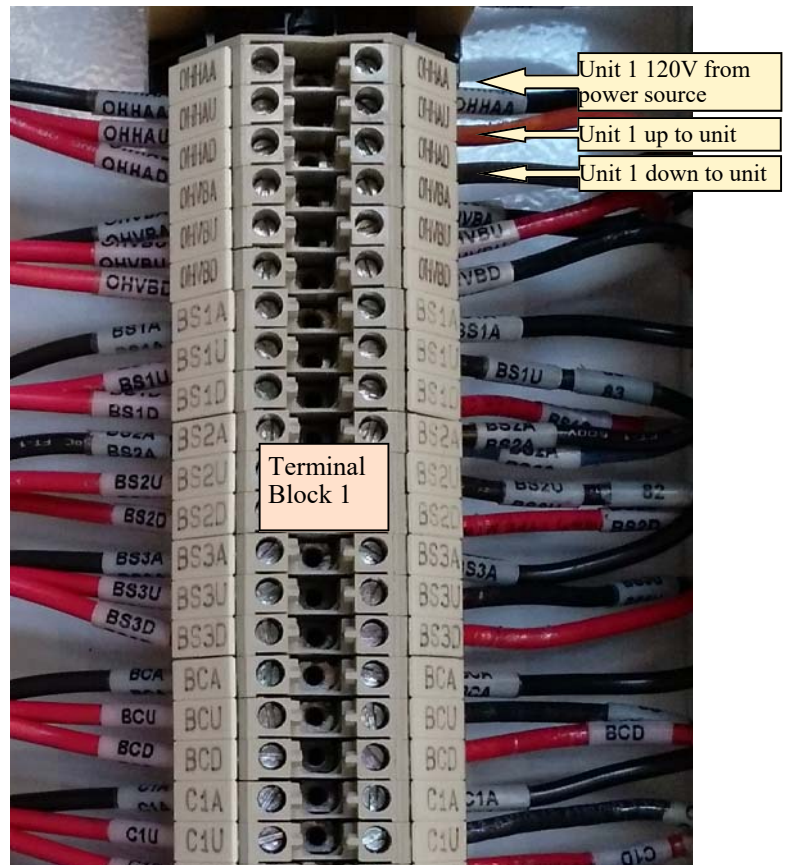
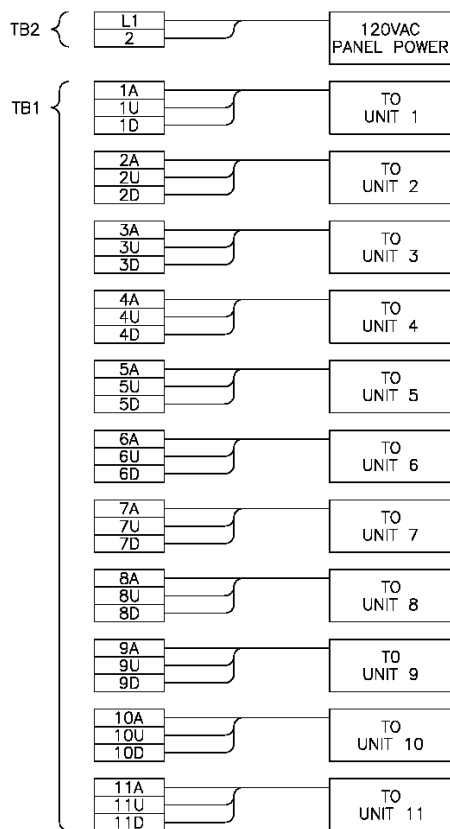
1. Unpack and check all parts and verify quantities with packing list. Verify the location of electrical breakers, equipment wiring, and location(s) for installation of Powr-Touch 5.0 panel(s).
2. Mount Powr-Touch 5.0 panel to building per contract documents and local code provisions.

CONNECTION OF EQUIPMENT WIRING TO PANEL

3. Turn off power at the circuit breakers for all equipment to be controlled by the Powr-Touch 5.0.
4. Referencing the “Unit Map” provided by Porter, the “Field Wiring Diagram”, and “Sub-Panel Layout” drawings provided by Elemech, connect the equipment wiring to the terminal strips in the sub-panel according to site specific diagrams provided in your submittal documents. Panel is pre-programmed and relays are pre-assigned to operate specific equipment units. **Important: Deviation from submittal documents will cause equipment to operate incorrectly.**

Example:

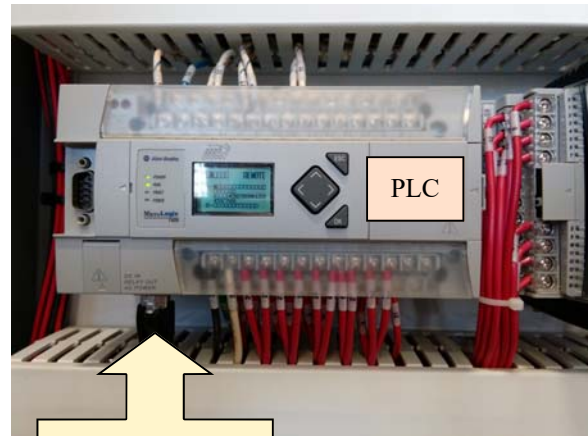
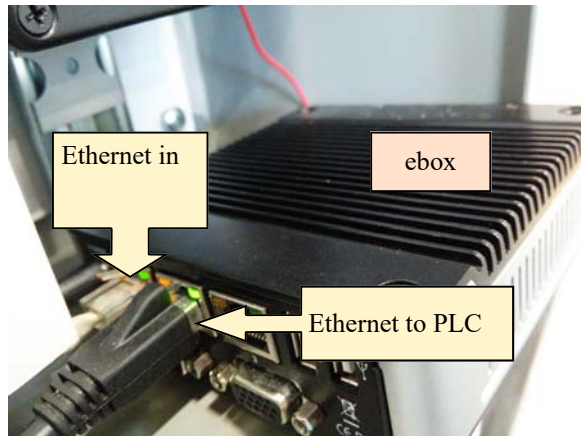
FIELD WIRING DIAGRAM



5. The largest wire gauge accepted by the Powr-Touch 5.0 panel terminal block is 10 AWG. If equipment runs require larger wire sizes, a step-down will be required.

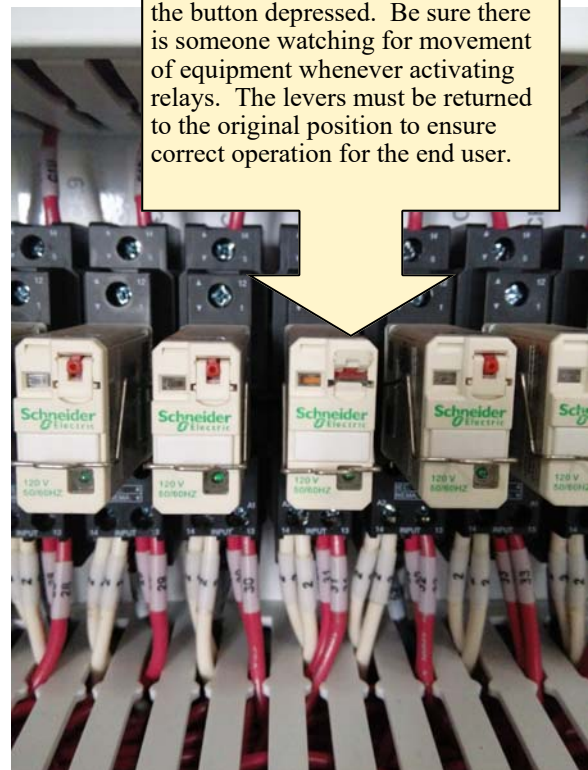
CONNECTION OF CONTROLLER

- Connect the Ethernet cables to the ebox(es). In the first panel, connect the Ethernet in to the first port of the ebox. If there is a second panel without a second ebox, connect the Ethernet in to the PLC.



- Turn the power at the breakers back on.
- Test the equipment at the panel by switching the down and up relays for each device. Ensure relays are set back to original position after testing is complete.

Ethernet to ebox
-OR-
ONLY if there are
multiple panels:
Ethernet in



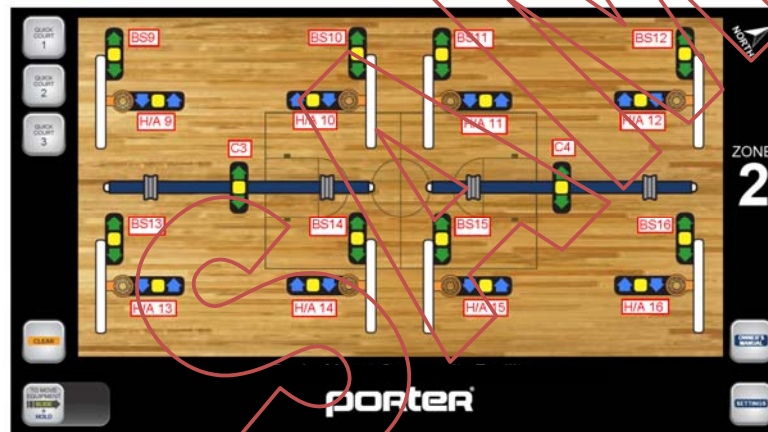
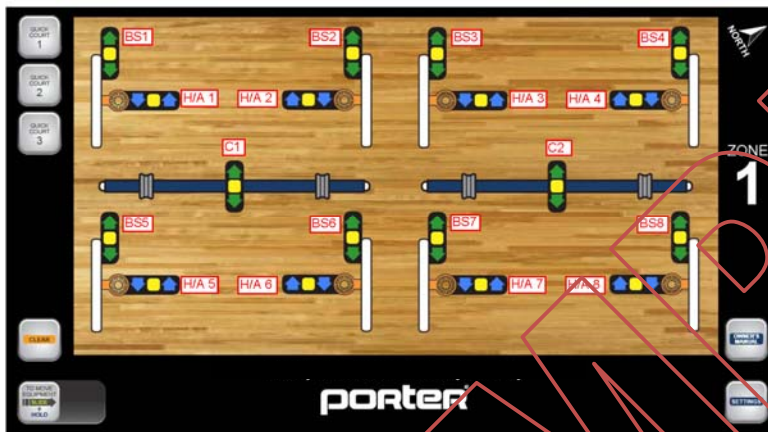
- Troubleshoot any issues.

TROUBLESHOOTING GUIDE

SYMPTOM	POSSIBLE SOLUTION
Equipment runs backwards.	Confirm wiring to up/down terminals is correct.
Equipment will not run.	Check that all circuit breakers are on.
Equipment will not run.	Check that equipment is correctly wired to the terminal strip in the sub panel.
Equipment will not run.	Check that all equipment is plugged in and limits are set appropriately.

If you experience any problems that you cannot solve, please contact Porter at Powrtouch5@porterathletic.com.

SAMPLE UNIT MAP

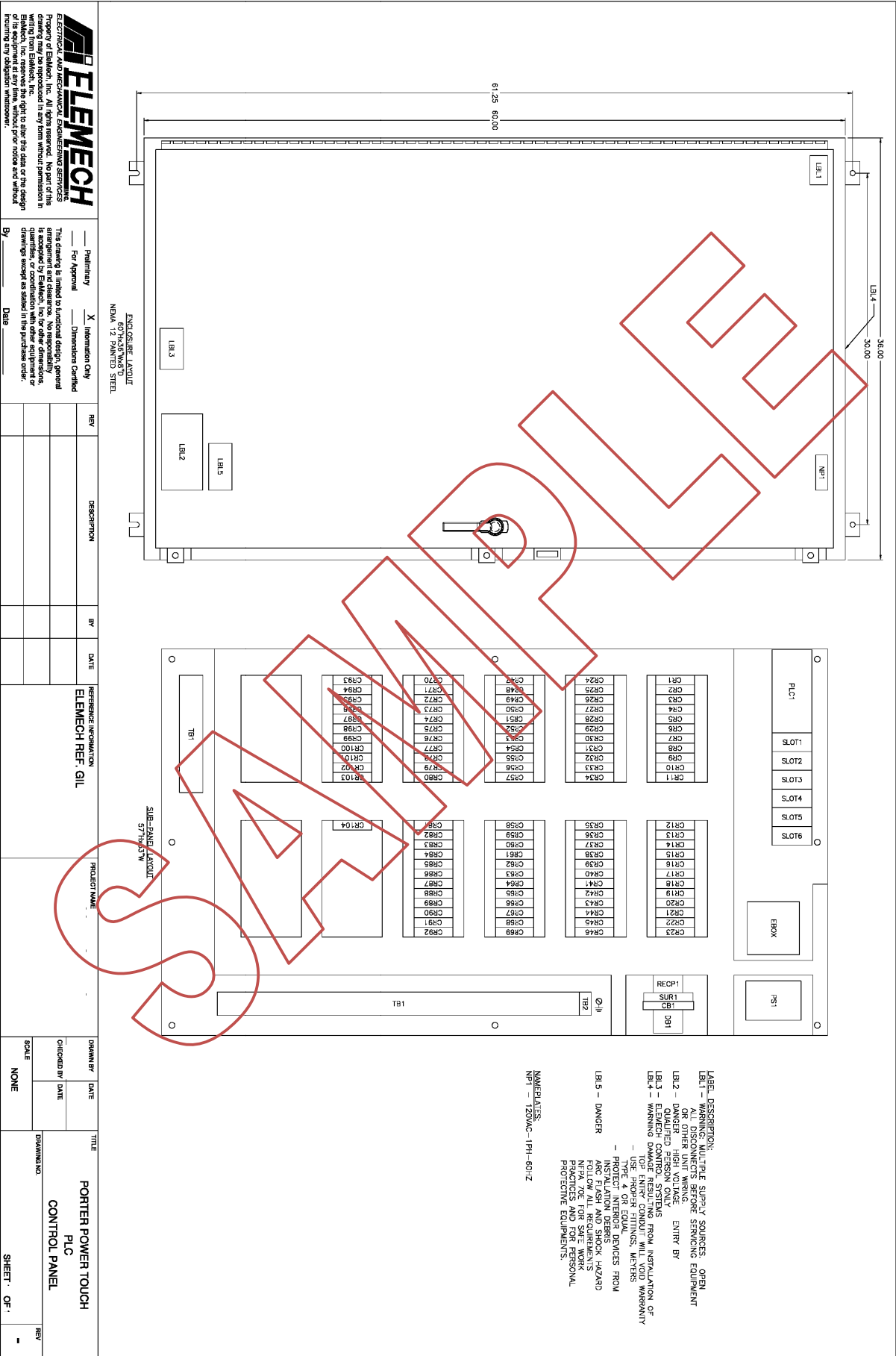


Panel Designation	Porter Design Designation
Unit 1	Backstop (BS) 1
Unit 2	Backstop (BS) 2
Unit 3	Backstop (BS) 3
Unit 4	Backstop (BS) 4
Unit 5	Backstop (BS) 5
Unit 6	Backstop (BS) 6
Unit 7	Backstop (BS) 7
Unit 8	Backstop (BS) 8
Unit 9	Height Adjuster (H/A) 1
Unit 10	Height Adjuster (H/A) 2
Unit 11	Height Adjuster (H/A) 3
Unit 12	Height Adjuster (H/A) 4
Unit 13	Height Adjuster (H/A) 5
Unit 14	Height Adjuster (H/A) 6
Unit 15	Height Adjuster (H/A) 7
Unit 16	Height Adjuster (H/A) 8
Unit 17	Curtain (C) 1
Unit 18	Curtain (C) 2
Unit 19	Backstop (BS) 9
Unit 20	Backstop (BS) 10
Unit 21	Backstop (BS) 11
Unit 22	Backstop (BS) 12
Unit 23	Backstop (BS) 13
Unit 24	Backstop (BS) 14
Unit 25	Backstop (BS) 15
Unit 26	Backstop (BS) 16
Unit 27	Height Adjuster (H/A) 9
Unit 28	Height Adjuster (H/A) 10
Unit 29	Height Adjuster (H/A) 11
Unit 30	Height Adjuster (H/A) 12
Unit 31	Height Adjuster (H/A) 13
Unit 32	Height Adjuster (H/A) 14
Unit 33	Height Adjuster (H/A) 15
Unit 34	Height Adjuster (H/A) 16
Unit 35	Curtain (C) 3
Unit 36	Curtain (C) 4

SAMPLE FIELD WIRING DIAGRAM



SAMPLE SUB-PANEL LAYOUT



THIS WARNING IS GIVEN IN COMPLIANCE
WITH CALIFORNIA'S PROPOSITION 65:

WARNING

This product contains chemicals known to the
State of California to cause cancer, birth defects

THIS PRINT IS THE PROPERTY OF PORTER ATHLETIC EQUIPMENT COMPANY AND MAY NOT BE
REPRODUCED WITHOUT WRITTEN PERMISSION

INSTALLER NOTES

porter[®]

601 Mercury Drive, Champaign, IL U.S.A., 61820

www.porterathletic.com

(888) 277-7778

SAVE THESE INSTRUCTIONS FOR FUTURE USE