

# 128100XX - Powr-Touch® 5

Powr Touch 5 Powered by S.C.O.R.E. Technology

## GRAPHIC INTERFACE EXAMPLES:

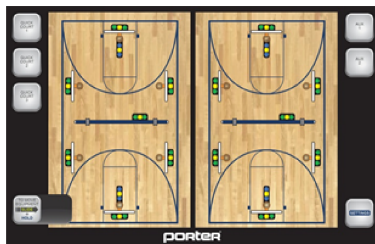


4 Digit Password

\*CUSTOMIZED FOR EACH FACILITY\*

Re-programable  
Quick Court Layouts

## Small Layout Example



Auxiliary Electrical  
Control Toggles

Slide to Move Equipment:  
Equipment will move  
up/down/hold based on toggle  
light setting. Will stop moving  
when released.

## Large Layout Example

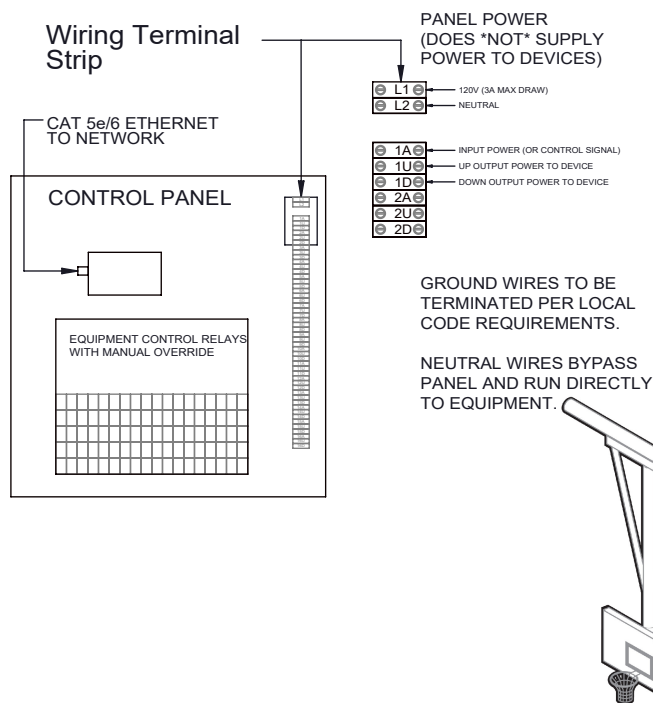


Multiple Zones for Larger Facilities  
Will zoom into selected zone with  
Quick Courts and Move Options  
on selection

Button to Admin Page:  
Change Password  
Re-program Quick Courts  
Other Settings

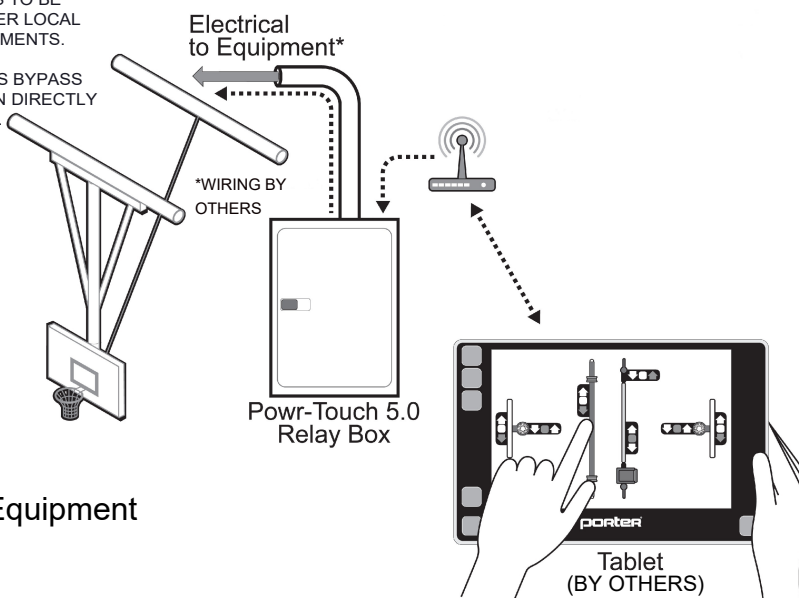
## WIRING REQUIREMENTS:

EACH INPUT POWER OR SIGNAL WILL BE SWITCHED TO THE UP OR DOWN LINE FOR THAT DEVICE. EACH CIRCUIT SHALL OPERATE INDEPENDENTLY. INPUT POWER AND WIRE SIZE (BY OTHERS) MUST BE BASED ON MOTOR SIZE AND LENGTH OF WIRE TO ENSURE ADEQUATE POWER REACHES THE MOTOR. TOTAL CURRENT PER CIRCUIT MUST BE 15 AMPS. FOR NON-PORTER PRODUCTS, CONSULT MANUFACTURER TO VERIFY POWER REQUIREMENTS ARE WITHIN SPECIFICATIONS.



# of Devices	Part Number	Estimated Enclosure Size**
Up to 14	12810-012	24" H x 20" W
Up to 28	12810-028	30" H x 24" W
Up to 42	12810-044	48" H x 36" W
Up to 56	12810-052	48" H x 36" W
Over 56	Call Porter	

\*\*Enclosure sizes are estimates, final enclosure size determined at time of submittal



\_\_\_\_\_ - 128100XX - Powr-Touch® 5  
\_\_\_\_\_ - Pieces of Athletic Equipment

## OPTIONAL ACCESSORIES

\_\_\_\_\_ - 12810000 - Panel mounted screen

# 128100XX - Powr-Touch® 5

Powr-Touch® 5 Powered by S.C.O.R.E. Technology  
Screen Control Operation of Retractable Equipment

## SPECIFICATIONS

### PORTER No. 12800 Powr-Touch 5 Control System

Powr Touch 5 Control System is designed to work on any network enabled devices capable of supporting an html browser. The required browser is Google Chrome. Included is a custom designed interface that allows users to clearly know which pieces of equipment they are operating by mapping them to their facility. A wireless enabled device can be used to navigate the facility while operating the equipment to have a better view of the equipment being operated. Users should always have a clear view of the equipment they are operating and the areas surrounding the equipment.

The custom interactive graphic interface allows for users to move all selected equipment in a up, hold, or down position or a pre-selected combination of those positions with a single command. Equipment will immediately stop moving when the user releases the move slide button. A 4 digit numeric password is used to gain access to the system. This password can be reprogrammed from the admin settings. Multiple devices can be set up to control system if granted access to the network, but only one device can have access to control equipment at a time.

Quick court buttons will be provided that allow for pre-set configurations making it easier to set up for common facility configurations. These buttons can be easily re-programmed on the admin page.

Large facilities may be configured into multiple zones so users can better maintain visual contact with the equipment they are controlling and the area around the equipment. Standard zones size is approximately 12 units but will be coordinated with the facility based on project conditions.

The system is exandable to control an essentially unlimited number of devices. Auxiliary on/off devices can be mapped to interface toggles for equipment such as scoreboards, etc.

Software can be admended to include more devices at a later date by contacting Porter Athletic.

Electrical relay panel will be furnished containing all relays necessary. Panel will come pre-wired ready to accept a 115V 15 Amp circuit for each device plus an additional circuit for the relay controller. The terminal strip will accept up to 10 gauge wires. An ethernet port inside the relay will connect the panel to a facility provided network. The network and user interface device shall be provided by others.

Control system comes with a 1 year warranty.