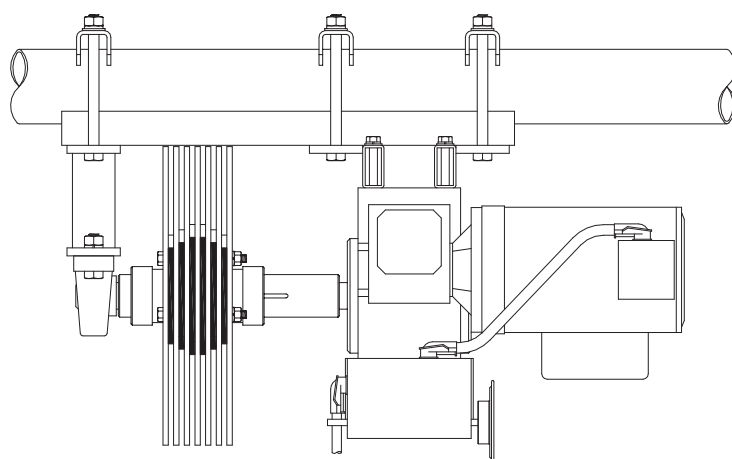
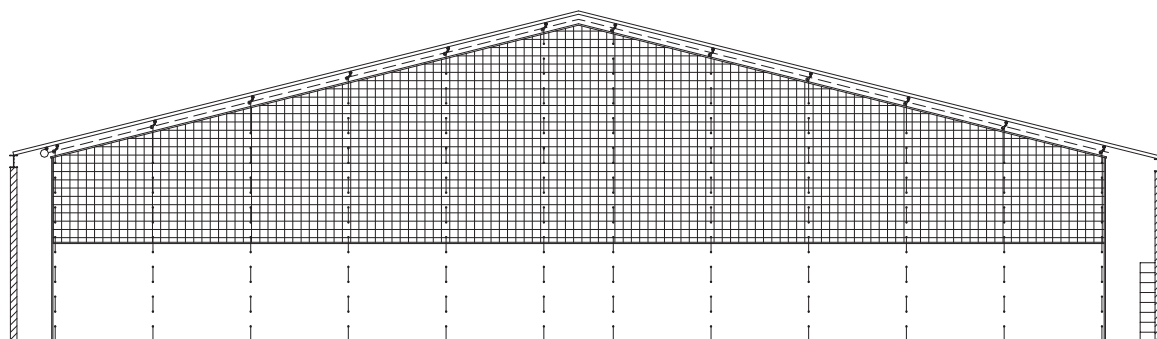
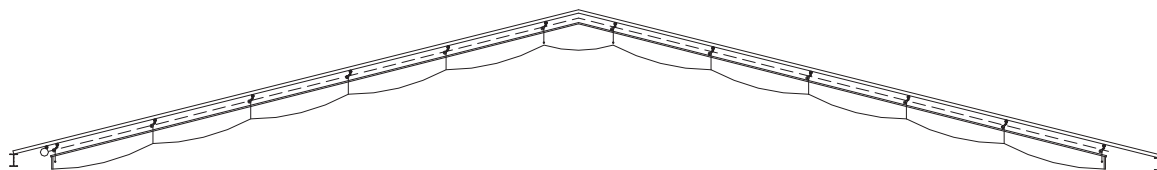


SLOPE FOLD DIVIDER CURTAIN

No. 665



Porter[®]

Installation, Operation, and Maintenance Manual

SAVE THESE INSTRUCTIONS FOR FUTURE USE



INSTRUCTIONS: Dealer and/or Installation Supervisor,
Please give this book to the Owner/Customer

| | |
|-------------------------|--|
| NAME OF PROJECT: | |
| | |
| | |
| | |

| | |
|-----------------|-------------------------------|
| NAME OF DEALER: | NAME OF INSTALLATION COMPANY: |
| PHONE #: | PHONE #: |

Porter Order Number _____
Date of Scheduled Shipment _____
Date of Substantial Completion _____

The gymnasium equipment for this project has been custom fabricated according to the Owner's/Architect's specification. Care has been taken to fabricate and install this equipment to provide years of safe, satisfactory use and trouble free service.

The key to satisfactory service is proper operation and care. Should any malfunctions occur, please notify your supervisor and call your local Porter Dealer or Representative.



TABLE OF CONTENTS

| | |
|--|-------|
| WARRANTY INFORMATION | 4-5 |
| MANUAL OVERVIEW | 6-7 |
| OPERATIONAL INSTRUCTIONS | 8 |
| MAINTENANCE/INSPECTION CHECKLIST | 9-12 |
| INVENTORY AND TOOLS | 13 |
| INSTALLATION INSTRUCTIONS | 14-21 |
| FABRIC CONSIDERATIONS | 22-27 |
| REVISING VARIABLE DRUM CONFIGURATION | 28 |

PORTER LIMITED PRODUCT WARRANTY

Product Line: 665 Slope Fold Curtain (the “Equipment”)

Porter Athletic (“Porter”) provides the below limited warranty (the “Limited Warranty”) to the original purchaser of the Equipment and only as to the facility in which the Equipment was originally installed. The Limited Warranty extends from the time the Equipment is installed by qualified installers and continues based on the timeline listed below under the terms and conditions stated below.

Limited Warranty Terms and Conditions

Porter warrants the Equipment against defects in material or factory workmanship which cause failure of the Equipment within the applicable Limited Warranty period and provided that notification of defects, together with proof of purchase, is given to Porter at Porter@porterathletic.com within thirty (30) days of discovery of such defect. Porter, once it confirms the existence of a covered defect will, at its sole discretion, repair or replace the defective Equipment with comparable Equipment or will provide a refund of the purchase price prorated over the remaining Limited Warranty period. In the event of repair or replacement, the Limited Warranty includes labor, materials, and freight during the first year of the Limited Warranty and then materials only for the balance of the Limited Warranty period based on the Limited Warranty coverage time period shown below for each category. All other costs, expenses or losses are excluded, including, but not limited to, costs for maintenance of the Equipment. The manner of fulfillment of the Limited Warranty (including investigation, timing of response, labor, and manner of shipment, if applicable) is at the sole discretion of Porter.

Standard Limited Warranty Coverage Time Period

1 year - Structural Components, Mechanical Components, Electrical Components, Fabric

Other components—may be covered by separate warranty, please see product information sheets

Exclusions and Conditions: This limited warranty excludes and does not apply to:

- Damage, whether natural or manmade, including, but not limited to fire, flood, wind, lightening or other acts of nature or God.
- Normal maintenance items such as fuses and belts.
- Normal wear and tear
- Use for other than intended purpose or use not in accord with generally approved practices
- Abuse, neglect, vandalism, alterations, modifications or misuse – as determined by Porter
- Equipment not installed by Porter Athletic Approved Installers
- Natural variations occurring in product finishes are not considered defects.
- User attached accessories
- Damage caused by operation of Equipment by persons not properly trained to operate it
- Equipment not routinely inspected and maintained by facility personnel or operators in accordance with the Porter Operation and Maintenance Manual.

In cases where repair or replacement of Equipment is deemed necessary, color or texture shall be in accord with that offered by Porter at the then current time.

Porter’s liability under this Limited Warranty is limited to repair or replacement of defective Equipment or a prorated refund as described above. The sole and exclusive remedy against Porter, or its parent, affiliates, subsidiaries, or distributors shall be for the repair, replacement or prorated refund, at Porter’s sole discretion, of any defective Equipment as provided herein. IN NO EVENT SHALL PORTER OR ITS PARENT, AFFILIATES, SUBSIDIARIES, OR DISTRIBUTORS BE LIABLE FOR ANY INCIDENTAL OR CONSEQUENTIAL DAMAGES RELATING TO, ARISING OUT OF OR IN CONNECTION WITH THE USE OR PERFORMANCE OF THE EQUIPMENT, INCLUDING WITHOUT LIMITATION, ANY LABOR AND /OR OTHER INSTALLATION EXPENSES INCURRED IN CONNECTION WITH THE REPLACEMENT OR REPAIR OF DEFECTIVE EQUIPMENT, EXCEPT TO THE EXTENT OTHERWISE SET FORTH HEREIN, OR ANY OTHER INDIRECT OR CONSEQUENTIAL DAMAGES OF ANY NATURE WHATSOEVER, INCLUDING, BUT NOT LIMITED TO, LOSS OF REVENUE, PROFITS OR OPPORTUNITY.

This document constitutes Porter’s Limited Warranty in its entirety and no other provisions express or implied exist. This Limited Warranty excludes, without limitation, any implied warranties of merchantability or fitness for a particular purpose. Any modifications of this Limited Warranty must be in writing and signed by an officer of Porter. No other person, agent or representative of Porter or any distributor or dealer has any authority to change or modify this Limited Warranty, either verbally or in writing.

Porter reserves the right to change required inspection and maintenance provisions for the Equipment from time to time and upon notification of such change, Customer must abide by those revised provisions or this limited warranty is void.

Various states may have laws affecting your rights under this Limited Warranty.

PORTER EXTENDED LIMITED PRODUCT WARRANTY

Product Line: 665 Slope Fold Curtain (the “Equipment”)

Porter Athletic (“Porter”) provides the below extended limited warranty (the “Extended Limited Warranty”) to the original purchaser of the Equipment and only as to the facility in which the Equipment was originally installed. The Extended Limited Warranty extends from the time the Equipment is installed by qualified installers and continues based on the timeline listed below under the terms and conditions stated below, including, but not limited to, the required inspections and maintenance referenced below (the “Maintenance Program”).

Extended Limited Warranty Terms and Conditions

Porter warrants the Equipment against defects in material or factory workmanship which cause failure of the Equipment within the applicable Extended Limited Warranty period and provided that notification of defects, together with proof of purchase, is given to Porter at Porter@porterathletic.com within thirty (30) days of discovery of such defect. Porter, once it confirms the existence of a covered defect and compliance with the Maintenance Program, will, at its sole discretion, repair or replace the defective Equipment with comparable Equipment or will provide a refund of the purchase price prorated over the remaining Extended Limited Warranty period. In the event of repair or replacement, the Extended Limited Warranty includes labor, materials, and freight during the first year of the Extended Limited Warranty and then materials only for the balance of the applicable Extended Limited Warranty based on the Extended Limited Warranty coverage time period shown below for each category. All other costs, expenses or losses are excluded, including, but not limited to, costs for maintenance of the Equipment. The manner of fulfillment of the Extended Limited Warranty (including investigation, timing of response, labor, and manner of shipment, if applicable) is at the sole discretion of Porter.

Extended Limited Warranty Coverage Time Period

15 years – Structural Components (Structure Pipes, and Ceiling attachments)

10 years – Mechanical (Cables, Pulleys, Hinges, Roller Assembly, Straps)

5 years -- Electrical Components (Winches, Control Systems)

Other components – Covered by separate warranty, please see product information sheets

Exclusions and Conditions: This Extended Limited Warranty excludes and does not apply to

- Equipment not properly inspected or maintained by a Porter certified inspector at least annually in accordance with the Maintenance Program set forth in the current Porter Installation, Operation and Maintenance Manual for Basketball Backstops of the series covering the involved Equipment which is delivered with the product, is available on line at www.porterathletic.com, or which may be ordered from Porter.
- Damage, whether natural or manmade, including, but not limited to fire, flood, wind, lightening or other acts of nature or God.
- Normal maintenance items such as fuses and belts.
- Normal wear and tear
- Use for other than intended purpose or use not in accord with generally approved practices
- Abuse, neglect, vandalism, alterations, modifications or misuse – as determined by Porter
- Equipment not installed by Porter Athletic Approved Installers
- Natural variations occurring in product finishes are not considered defects.
- User attached accessories
- Damage caused by operation of Equipment by persons not properly trained to operate it
- Equipment not routinely inspected and maintained by facility personnel or operators in accordance with the Porter Operation and Maintenance Manual.

In cases where repair or replacement of Equipment is deemed necessary, color or texture shall be in accord with that offered by Porter at the then current time.

Porter’s liability under this Extended Limited Warranty is limited to repair or replacement of defective Equipment or a prorated refund as described above. The sole and exclusive remedy against Porter, or its parent, affiliates subsidiaries, or distributors shall be for the repair, replacement or prorated refund, at Porter’s sole discretion, of any defective Equipment as provided herein. IN NO EVENT SHALL PORTER OR ITS PARENT, AFFILIATES, SUBSIDIARIES, OR DISTRIBUTORS BE LIABLE FOR ANY INCIDENTAL OR CONSEQUENTIAL DAMAGES RELATING TO, ARISING OUT OF OR IN CONNECTION WITH THE USE OR PERFORMANCE OF THE EQUIPMENT, INCLUDING WITHOUT LIMITATION, ANY LABOR AND /OR OTHER INSTALLATION EXPENSES INCURRED IN CONNECTION WITH THE REPLACEMENT OR REPAIR OF DEFECTIVE EQUIPMENT, EXCEPT TO THE EXTENT OTHERWISE SET FORTH HEREIN, OR ANY OTHER INDIRECT OR CONSEQUENTIAL DAMAGES OF ANY NATURE WHATSOEVER, INCLUDING, BUT NOT LIMITED TO, LOSS OF REVENUE, PROFITS OR OPPORTUNITY.

This document constitutes Porter’s Extended Limited Warranty in its entirety and no other provisions express or implied exist. This Extended Limited Warranty excludes, without limitation, any implied warranties of merchantability or fitness for a particular purpose. Any modifications of this Extended Limited Warranty must be in writing and signed by an officer of Porter. No other person, agent or representative of Porter or any distributor or dealer has any authority to change or modify this Extended Limited Warranty, either verbally or in writing.

Porter reserves the right to change required inspection and maintenance provisions for the Equipment from time to time and upon notification of such change, Customer must abide by those revised provisions or this Extended Limited Warranty is void.

Various states may have laws affecting your rights under this Extended Limited Warranty.

MODEL NO. 665 SLOPE- FOLD[®] DIVIDER CURTAIN MANUAL OVERVIEW

WARNING

READ ALL INSTRUCTIONS THOROUGHLY BEFORE ATTEMPTING TO OPERATE THIS EQUIPMENT.

FAILURE TO COMPLY WITH THE FOLLOWING INSTRUCTIONS AND WARNINGS MAY RESULT IN SERIOUS INJURIES AND/OR PROPERTY DAMAGE.

This manual has been prepared to assist you with the installation, operation and maintenance of the 665 Divider Curtain.

Enclosed in this manual is an inspection list for your equipment, including operational information.

We recommend that you read this manual to become familiar with the operation of the 665 Divider Curtain, and then assign it to the person responsible for the maintenance and inspection program. If you need additional copies of this manual, please let us know.

The safest equipment can be damaged when used by the untrained. We suggest that qualified personnel supervise all utilized equipment.

For ease of administering this maintenance program, we suggest that your equipment be numbered and a file maintained on its location, name of manufacturer, original item number, date of purchase, and maintenance performed. This will be useful when ordering replacement parts and keeping track of maintenance. Defective equipment must be marked **“DO NOT USE”**, and the circuit breaker must be turned off and also tagged **“DO NOT USE”**, until replacement or repairs are completed.

Inspections should be performed periodically, depending upon the nature of the equipment and its use. When the equipment is exposed to heavy use, special inspections should be made in addition to the normal maintenance program. At minimum, a yearly inspection of the system is recommended.

Any structural and/or electrical deviation from the Porter installation manuals and drawings, without written authorization, will void all warranties.

LIABILITY

Liability is not only an issue with the installation and maintenance of this product, but also extends to the proper operation by the end user. The operational instructions must be read and understood before operating this equipment!

This model No. 665 curtain manual, which provides explicit examples of a variation of overhead attachments, is meant to serve as a general guideline only for the safe installation of this product. Variables must be taken into consideration which are outside of Porter's control, including, but not limited to, steel joist variations which include splice plate interference, web panel point attachments if specified by the Architect, conduit interference, HVAC and sprinkler interference, non-grouted cells of block walls, spacing and frequency of wall ties, appropriate selection of wall anchors for the given wall composition, proper installation of said anchors, embed depth of the anchors, etc. It is Porter's explicit requirement this product be installed in a safe and secure manner. Any structural deviation from Porter installation drawings without written authorization will void all warranties. Contact the factory immediately should such a condition exist, necessitating a design revision. All anchor and fastening methodology is to comply with the International Conference of Building Officials (ICBO), the Uniform Building Code (UBC), the Industrial Fastener Institute (IFI), and all state regulatory agencies, such as The Division of the State Architect (DSA) in California.

General Hardware Guidelines

- Do not substitute hardware without written authorization from the factory.
- Minimum Grade 5 hardware is to be utilized at all attachments, unless specified otherwise. Refer to the specific part drawing bill of material list in this manual for the proper grade of hardware.
- On eyebolt applications, a turned eye is not acceptable. Utilize forged eyebolts or, if necessary, a turned eye that is welded closed.
- Do not substitute for the factory-supplied cable and cable clamps. The quality of the 1/8" cable and clamps can vary widely from different manufacturers, and are not all suited for curtain applications.

MODEL NO. 665 SLOPE- FOLD[®] DIVIDER CURTAIN OPERATIONAL INSTRUCTIONS

WARNING

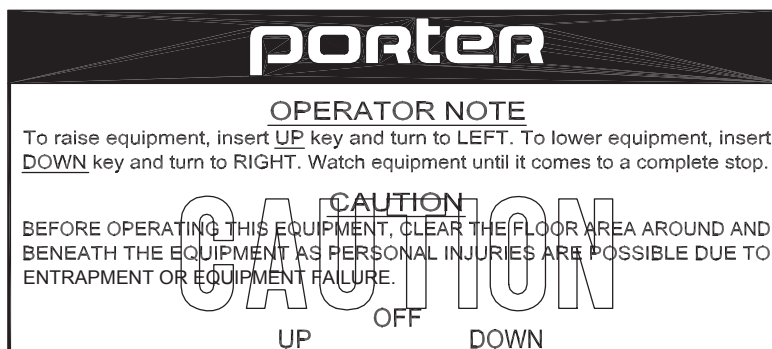
The 665 Divider Curtain is powered by an electric winch, which develops tremendous forces. This equipment is to be operated only by qualified personnel to avoid structural damage or possible injury to the operator and other individuals in the gymnasium.

Caution should be exerted at all times for safety reasons, keeping the following guidelines in mind:

- **ONLY** authorized, **TRAINED** personnel are to operate the 665 Divider Curtain. Authorized personnel is defined as an individual (or individuals) who is at least 21 years of age, has witnessed the proper operation of the unit, and is sanctioned by the facility as being responsible for the operation of the divider curtain.
- The key switch or Powr-Touch[®] pad, which controls the divider curtain, must be flush mounted on the wall, located in full view of the operator, and not directly beneath the equipment.
- Always make sure the area below the divider curtain and in the path of travel is clear of all individuals when raising and lowering the unit.
- The divider curtain may be raised or lowered by placing the “UP” OR “DOWN” key into the key switch, and turning as indicated on the switch cover plate. Refer to the separate Powr-Touch[®] manual for the key pad type operation.
- The key that operates the unit should be retained at all times by a designated authorized person, or kept in a lock box. ***Make sure that the key is never left in the key switch unattended!***
- It is critical the operator visually monitor the area around the curtain through the entire raising and lowering travel cycles, making certain no one is at or near the curtain travel. Pay particular attention to the unit as it nears a limit switch cut-off juncture. If the limits are not stopping the curtain at the “**DOWN**” position with minimal cable slack, or allowing the curtain to raise higher than the top of the curtain fabric, contact your Porter representative immediately.

Again the safest equipment can be damaged when used by the untrained. It is imperative the procedures set forth in this manual are strictly observed.

Note: The key switch must be labeled with the following operational instructions, as shown. If your key switch is not labeled properly, contact your Porter dealer immediately.



MODEL NO. 665 MAINTENANCE CHECK LIST

Porter recommends a maintenance inspection take place at least once a year by a Porter Certified Inspector, using the attached check list. Porter recommends the same check list be used as a guide for additional inspections by facility personnel or operators every 6 months. Any abnormal movement or sound during operation is cause for an immediate and thorough inspection. The annual inspection by a Porter Certified Inspector is required to maintain the extended limited warranty.

1. GENERAL

Before inspecting, be certain to follow all OSHA guidelines concerning the use of scaffolds and lifts. The proximity of the scaffold or lift to the curtain must be of adequate distance to provide working clearance, so as not to have the curtain contact the lift during operational checks.

Make certain the Porter key switch, Powr-Touch[®] pad, or control system are not substituted and is located within full view (but not beneath) the divider curtain. Check the walls in close proximity to the curtain for any type of protrusion that may interfere with the raising or lowering of the unit (i.e., new scoreboard, chinning bars, etc.).

2. ELECTRIC WINCH

Although virtually maintenance-free, the electric winch should also be periodically inspected for proper operation of the limit switch assembly and key switch. Refer to the key switch/limit switch instructions that came with the winch for adjustment procedure.

Inspect the three (3) 1/2" "U"-bolt connections of the frame weldment support to the support tube, ensuring all hardware is tight. The hardware at the building connection is also to be inspected for tightness.

The variable ratio drums are to be visually inspected, making certain the incoming cables are aligned with the take-up drums. Cable alignment is critical, and can be easily adjusted by moving the idler pulleys at each cable take-up line across the curtain.

3. PRIMARY AND IDLER PULLEYS

Inspect all primary steel take-up sheaves (pulleys) for any sign of wear. Replace the sheaves should wear be evident. Determine cause of any excessive wear (typically a cable alignment issue), and adjust as necessary. Do the same for the nylon idler pulleys. Note any idler pulley which receives a cable change in direction is to be steel, not nylon sheave.

4. TOP CURTAIN CONNECTIONS

Inspect all chain and "S" hook connections, making certain the hardware is all "closed."

5. HOISTING CABLES

Inspect all 1/8" galvanized hoisting cables for kinking or fraying, replacing as necessary.

6. TOP AND BOTTOM CURTAIN POCKET CONCEALED PIPES

Inspect both the top and bottom pockets, ensuring the concealed pipe is not separating. At the bottom hem, the pipe is to be secured to the fabric at each cable line with a 5/16" bolt through the curtain, the bottom pipe, and secured with a cap nut (see **Figure O**).

7. SUPERSTRUCTURE

Visually inspect all super structure and connections for any sign of abnormal deflection or structural cracks. Check all hardware to confirm it is present and secure.

8. FABRIC

Inspect the curtain for any tears or holes in the fabric. Additional fabric is supplied with the curtain, to be used for patching. Industrial vinyl cement will easily bond the vinyl patch to the curtain. Also, check the fabric for signs of tearing or loosening at the seams. Check grommets at all pull-up lines. The fabric may be cleaned with a mild solution of soap cleaner and water, or Power Foam sold by Rigmar Industries of Elk Grove Village, Illinois (1-800-323-0779).

665 DIVIDER CURTAIN INSPECTION REPORT

The following page should be copied and returned to Porter Athletic by a Porter Certified Inspector after each inspection.

Porter Order Number _____

Project Name _____

Name of Selling Dealer _____

Date of Scheduled Shipment _____

Date of Substantial Completion _____

(Information should be found on the first page of Installation manual)

Inspecting Company Name _____

Porter Certified Inspector Name _____

Inspection Date _____

Summary of Inspected Equipment, Include any replaced, repaired, damaged, or worn parts.

[illegible]

Please attach the checklist of each equipment inspected

665 CURTAIN INSPECTION CHECKLIST

Please refer to previous pages for details on inspections.

This checklist is to assist you in your inspection program.

As you are making the inspection, enter "S" for satisfactory, or "R" for repair and replace.

| INSPECT ALL ITEMS FOR EACH CURTAIN | | | | | | | | | | | |
|------------------------------------|----|----|----|----|----|----|----|----|-----|-----|-----|
| ELECTRIC WINCH | | | | | | | | | | | |
| #1 | #2 | #3 | #4 | #5 | #6 | #7 | #8 | #9 | #10 | #11 | #12 |
| | | | | | | | | | | | |
| PRIMARY AND IDLER PULLEYS | | | | | | | | | | | |
| #1 | #2 | #3 | #4 | #5 | #6 | #7 | #8 | #9 | #10 | #11 | #12 |
| | | | | | | | | | | | |
| TOP CURTAIN CONNECTIONS | | | | | | | | | | | |
| #1 | #2 | #3 | #4 | #5 | #6 | #7 | #8 | #9 | #10 | #11 | #12 |
| | | | | | | | | | | | |
| HOISTING CABLES | | | | | | | | | | | |
| #1 | #2 | #3 | #4 | #5 | #6 | #7 | #8 | #9 | #10 | #11 | #12 |
| | | | | | | | | | | | |
| TOP AND BOTTOM PIPES | | | | | | | | | | | |
| #1 | #2 | #3 | #4 | #5 | #6 | #7 | #8 | #9 | #10 | #11 | #12 |
| | | | | | | | | | | | |
| SUPERSTRUCTURE | | | | | | | | | | | |
| #1 | #2 | #3 | #4 | #5 | #6 | #7 | #8 | #9 | #10 | #11 | #12 |
| | | | | | | | | | | | |
| FABRIC | | | | | | | | | | | |
| #1 | #2 | #3 | #4 | #5 | #6 | #7 | #8 | #9 | #10 | #11 | #12 |
| | | | | | | | | | | | |

INVENTORY AND INSPECTION

Inventory parts listed on the packing list to ensure parts required are accounted for. Inspect all components for possible shipping damage. Report any shortages to Porter's Customer Service Department immediately. On visible freight damage, sign as damaged, and file a freight damage claim with the carrier immediately. Failure to report shortages or hidden freight damage directly to Porter's Customer Service Department within three working days will place the financial burden for the missing or replacement parts with the installer or general contractor.

PREPARATION OF ASSEMBLY AREA

Moving the curtain after assembly is both difficult and awkward. For that reason, the assembly of the curtain should take place below or near the curtain overhead support location. The floor should be protected with a suitable material, covering the entire length of the curtain in the assembly area to prevent damage to the floor or curtain. In addition, the floor and the covering must be free of any debris generated from assembly procedures prior to fabric installation.

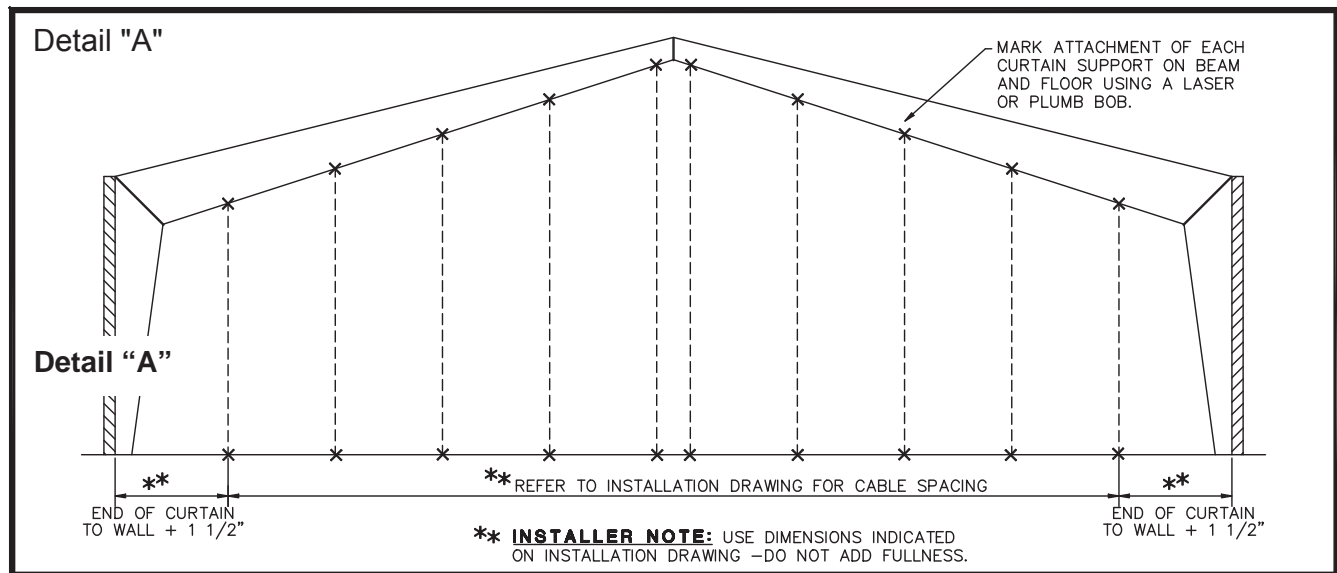
TOOLS / EQUIPMENT REQUIRED

To Be Provided by the Installer:

- Scaffold or Lift
- Hand tools, electric drill, drop cord, vise grip pliers, etc.
- Bolt Cutter
- Cable Cutter
- Measuring tape, Laser Measuring Device
- Level, Plumb Bob, Laser Plumb
- Nico-Press Crimper "VM" Size
- Electronic Test Box (02080-PWR)
- "U" Type 1/8" Cable Clamps
- Nico-Press Checking Gauge — "Oval M" Size
- Ropes & Pulleys

MODEL NO. 665 SLOPE-FOLD[®] DIVIDER CURTAIN INSTALLATION INSTRUCTIONS

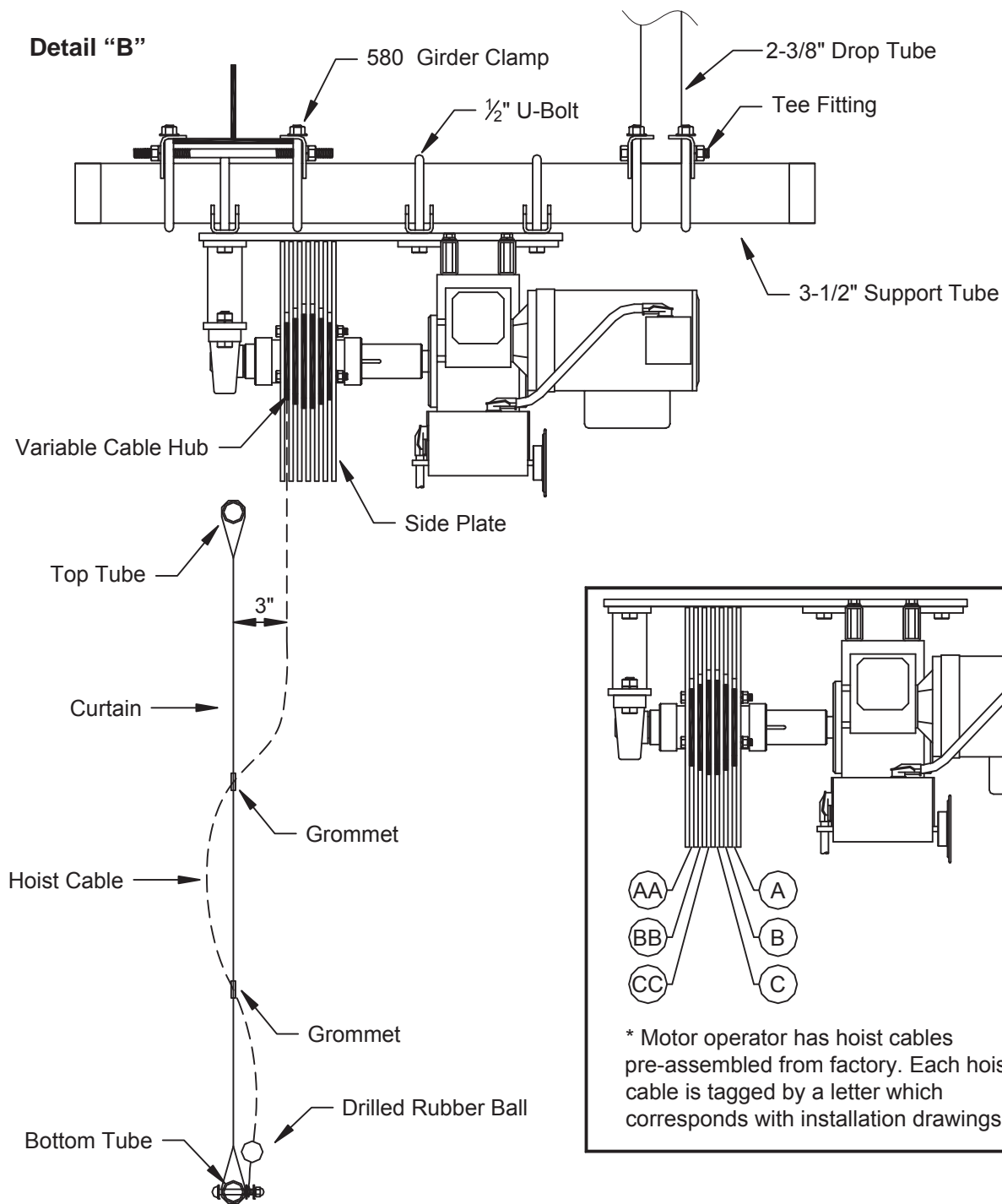
1. Open all boxes and cartons. Using the packing list provided, crosscheck items against it to ensure you have everything needed for installation. If a shortage occurs, contact PORTER Customer Service for assistance.
2. Determine the exact position of divider curtain and mark the locations of each support along the beam and floor using a laser device or plumb bob in preparation of support assemblies.



3. Locate and install the curtain operator support and curtain operator per the dimension indicated on the job specific installation print. Be certain to verify the location of the curtain, per the architectural prints. If the curtain is to be located on a court centerline, be sure to consult with the architect's "Court Striping Plan." Failure to do so may result in relocating the curtain at the **Installer's expense! This step is critical!**

Be sure to have the curtain operator oriented as indicated on the installation drawing. Depending on the field conditions, the curtain fabric may not be symmetrical.

Refer to detail B for typical support detail example.

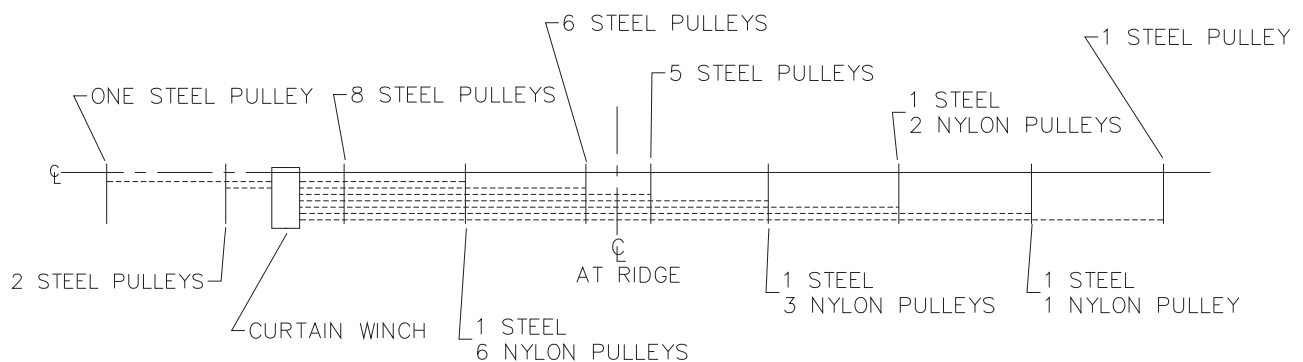


4. Arrange the support assemblies by number of pulleys. Note that supports at each end typically have only one pulley and then increase by one at each support as the cable lines progress towards the winch. The supports nearest the curtain operator will also contain only steel pulleys. Supports with only steel pulleys are also used for added strength at center locations where cable routing passes over a ridge. Refer to the installation drawing for exact support designations. Cable alignment is critical to provide proper cable wrap on drums. On curtains where the winch is positioned in the center, spacers are used between the steel and nylon idler pulleys to allow for proper alignment. Refer to details E, F, G, H, I, and J for support pulley configuration examples.

5. Locate and install the support assemblies in accordance with the installation drawing. Be sure to have all the pulleys facing in the same direction as the winch hub assembly. This will ensure proper cable routing and proper curtain operation. All primary hoist pulleys and change of direction pulleys are to be steel. All remaining "idler" pulleys are nylon.

Detail "E"

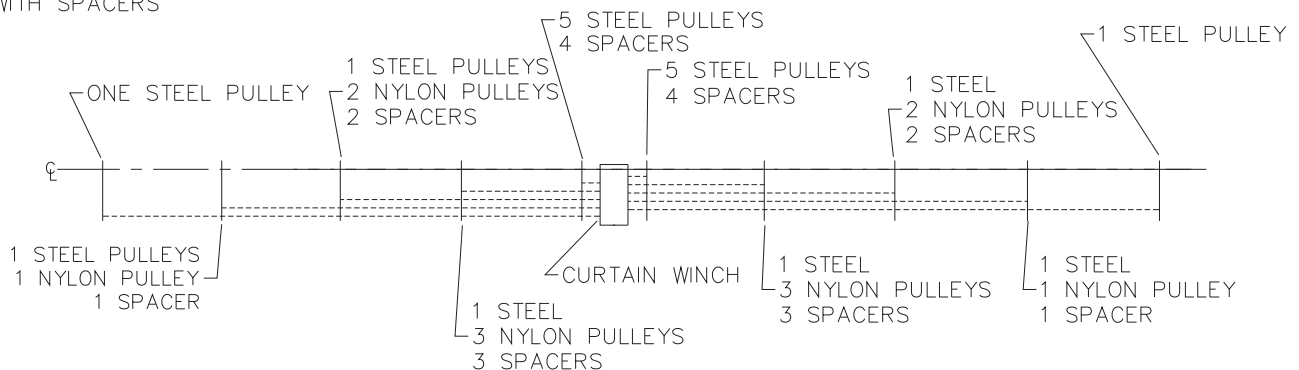
SUPPORT / PULLEY DESIGNATIONS



EXAMPLE ONLY – REFER TO ACTUAL INSTALLATION DRAWING FOR EXACT SUPPORT / PULLEY CONFIGURATION

Detail "F"

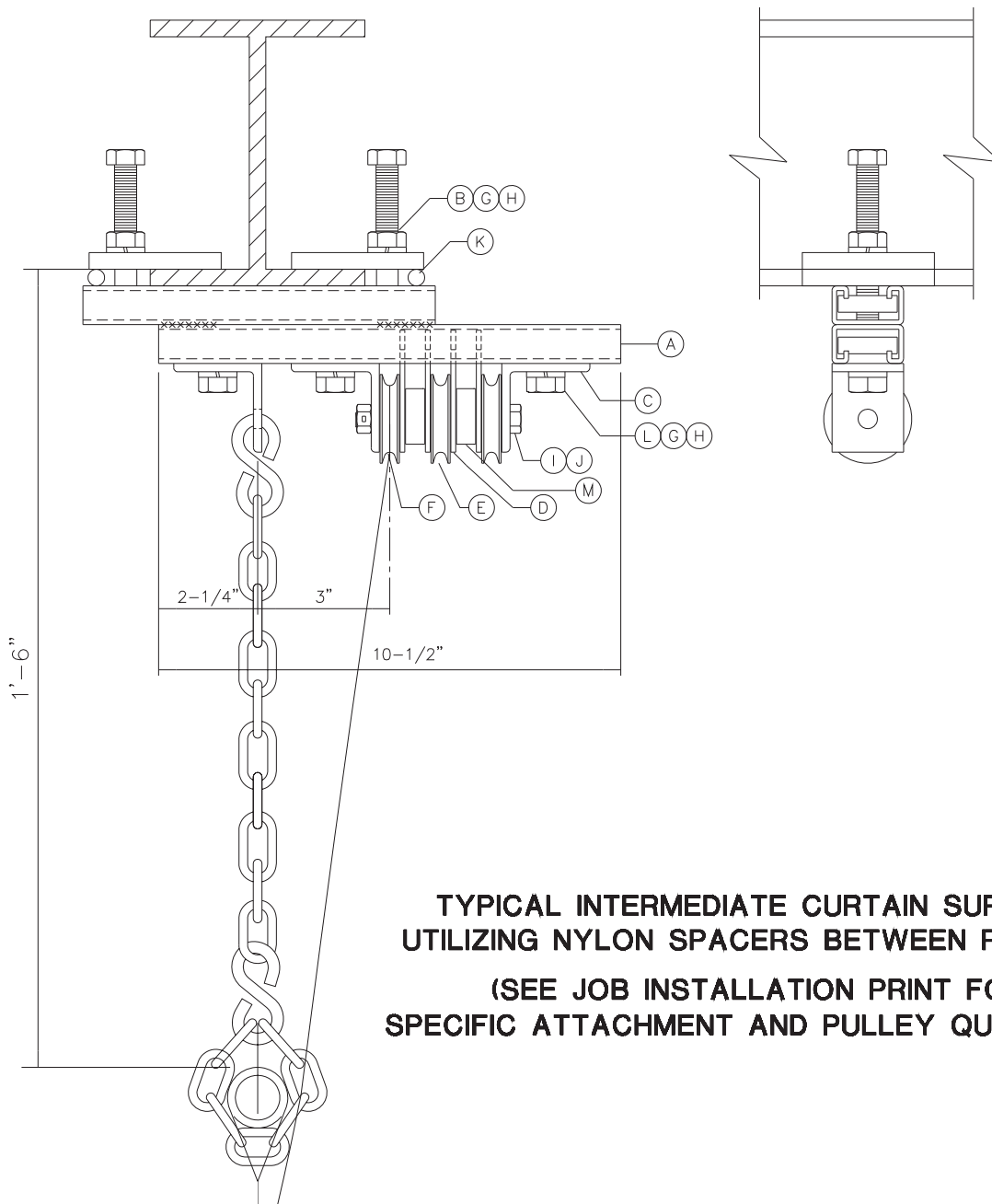
SUPPORT / PULLEY DESIGNATIONS WITH SPACERS



EXAMPLE ONLY – REFER TO ACTUAL INSTALLATION DRAWING FOR EXACT SUPPORT / PULLEY CONFIGURATION

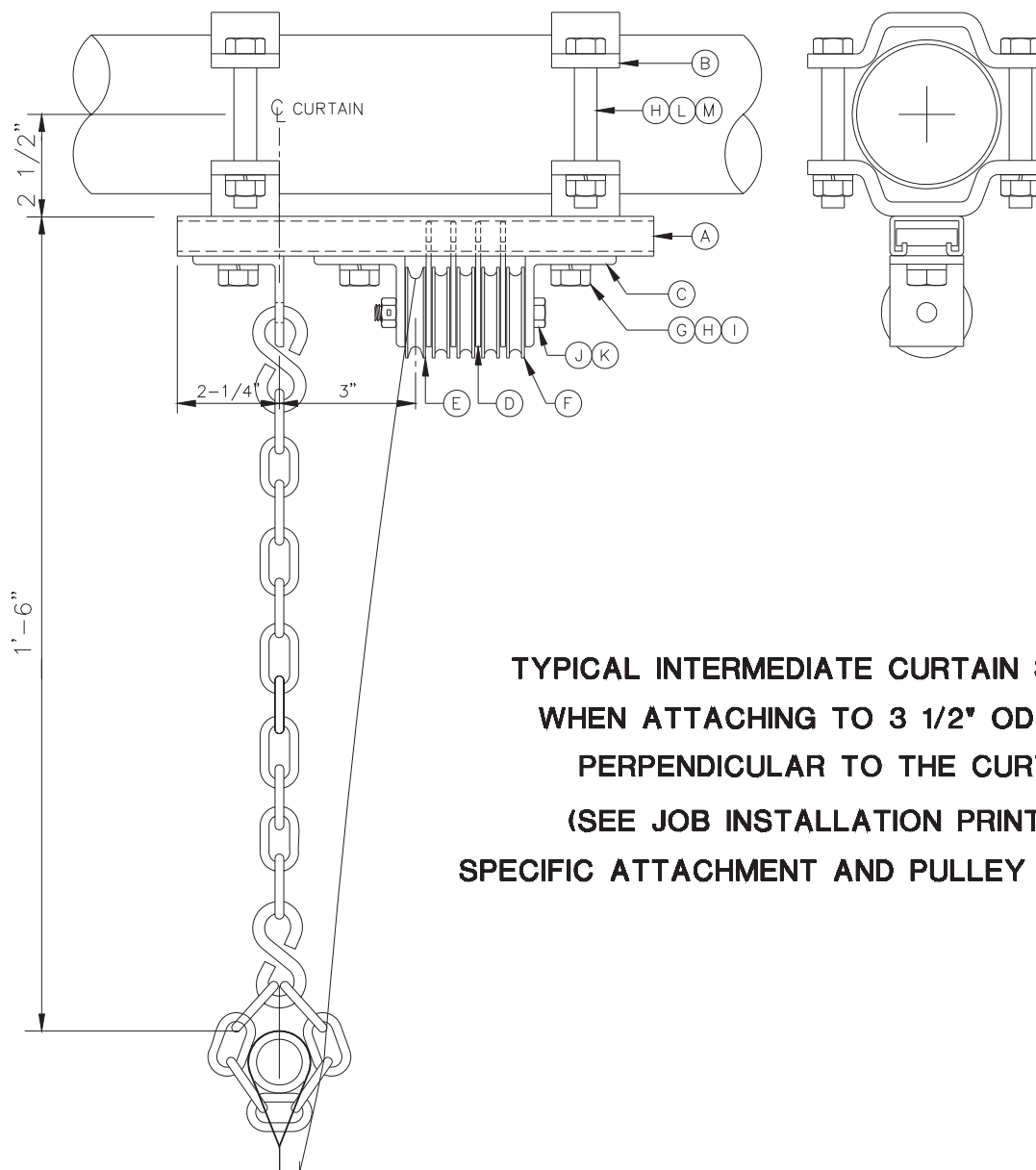
Detail "G"

| PARTS LIST (SEE INSTALLATION DRAWING AND PACKING LIST FOR ADDITIONAL DETAILS) | | | | | |
|---|------|--------------------------------|-----|------|------------------------------|
| NO. | QTY. | DESCRIPTION | NO. | QTY. | DESCRIPTION |
| A | 1 | UNI-STRUT WELDMENT | G | 5 | 1/2" UNI-STRUT NUT |
| B | 2 | 1/2" X 3 1/2" Lg. MACHINE BOLT | H | 5 | 1/2" LOCKWASHER |
| C | 3 | CLIP ANGLE | I | 1 | 3/8" MACHINE BOLT |
| D | 4 | PULLEY SIDE STRIP | J | 1 | 3/8" LOCK NUT |
| E | 2 | PLASTIC IDLER PULLEY | K | 2 | FLAT CLAMP WELDMENT |
| F | 1 | STEEL IDLER PULLEY | L | 2 | 1/2" X 1 1/4" Lg. MACH. BOLT |
| | | | M | 2 | NYLON SPACER |



Detail "H"

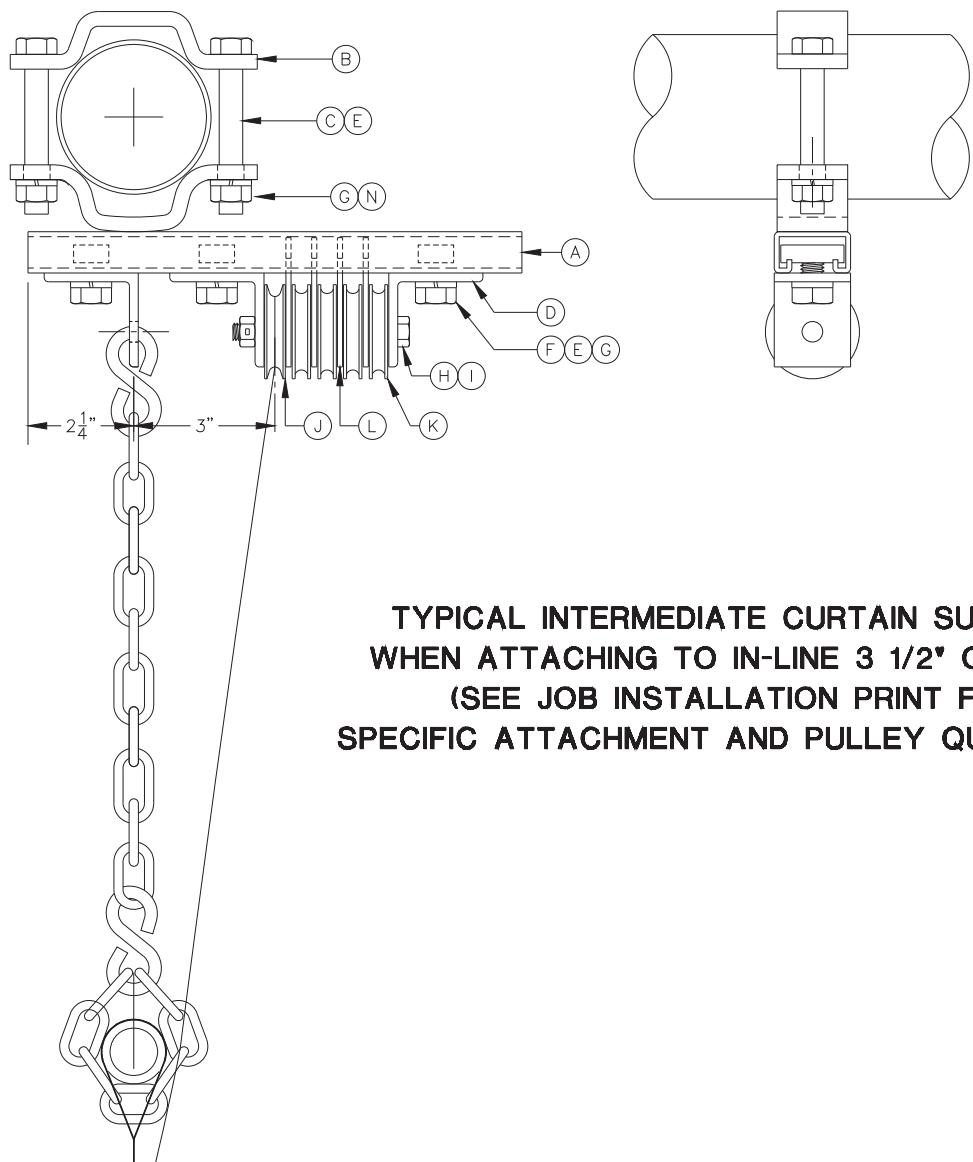
| PARTS LIST (SEE INSTALLATION DRAWING AND PACKING LIST FOR ADDITIONAL DETAILS) | | | | | |
|---|------|-------------------------------|-----|------|------------------------------|
| NO. | QTY. | DESCRIPTION | NO. | QTY. | DESCRIPTION |
| A | 1 | UNI-STRUT/HALF CLAMP WELDMENT | G | 3 | 1/2" UNI-STRUT NUT |
| B | 2 | 3 1/2" HALF CLAMP | H | 7 | 1/2" LOCKWASHER |
| C | 3 | CLIP ANGLE | I | 3 | 1/2" X 1 1/4" Lg. MACH. BOLT |
| D | 4 | PULLEY SIDE STRIP | J | 1 | 3/8" MACH. BOLT |
| E | 1 | STEEL IDLER PULLEY | K | 2 | 3/8" LOCK NUT |
| F | 4 | PLASTIC IDLER PULLEY | L | 4 | 1/2" X 3 3/4" Lg. MACH. BOLT |
| | | | M | 4 | 1/2" HEX NUT |



**TYPICAL INTERMEDIATE CURTAIN SUPPORT
WHEN ATTACHING TO 3 1/2" OD TUBES
PERPENDICULAR TO THE CURTAIN.
(SEE JOB INSTALLATION PRINT FOR
SPECIFIC ATTACHMENT AND PULLEY QUANTITIES)**

Detail "I"

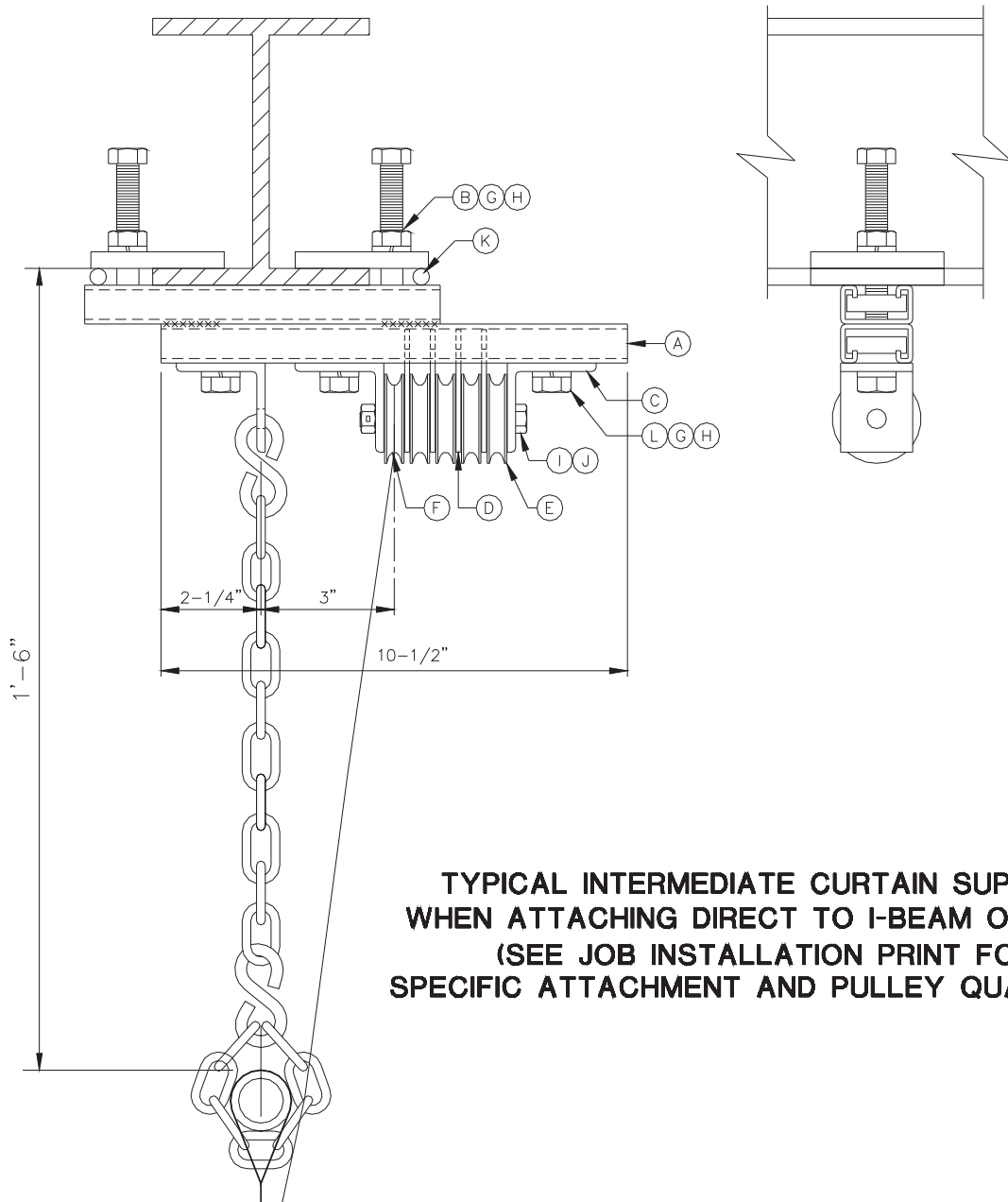
| PARTS LIST (SEE INSTALLATION DRAWING AND PACKING LIST FOR ADDITIONAL DETAILS) | | | | | |
|---|------|-------------------------------|-----|------|------------------------------|
| NO. | QTY. | DESCRIPTION | NO. | QTY. | DESCRIPTION |
| A | 1 | UNI-STRUT HALF CLAMP WELDMENT | G | 3 | 1/2" UNI-STRUT NUT |
| B | 2 | 3 1/2" HALF CLAMP | H | 1 | 3/8" X 3 1/2" Lg. MACH. BOLT |
| C | 2 | 1/2" X 3 3/4" Lg. MACH. BOLT | I | 1 | 3/8" LOCK NUT |
| D | 3 | CLIP ANGLE | J | 1 | STEEL IDLER PULLEY |
| E | 5 | 1/2" LOCKWASHER | K | 4 | PLASTIC IDLER PULLEY |
| F | 3 | 1/2" X 1" Lg. MACH. BOLT | L | 4 | PULLEY SIDE STRIP |



**TYPICAL INTERMEDIATE CURTAIN SUPPORT
WHEN ATTACHING TO IN-LINE 3 1/2" OD TUBE
(SEE JOB INSTALLATION PRINT FOR
SPECIFIC ATTACHMENT AND PULLEY QUANTITIES)**

Detail "J"

| PARTS LIST (SEE INSTALLATION DRAWING AND PACKING LIST FOR ADDITIONAL DETAILS) | | | | | |
|---|------|--------------------------------|-----|------|------------------------------|
| NO. | QTY. | DESCRIPTION | NO. | QTY. | DESCRIPTION |
| A | 1 | UNI-STRUT WELDMENT | G | 5 | 1/2" UNI-STRUT NUT |
| B | 2 | 1/2" X 3 1/2" Lg. MACHINE BOLT | H | 5 | 1/2" LOCKWASHER |
| C | 3 | CLIP ANGLE | I | 1 | 3/8" MACHINE BOLT |
| D | 4 | PULLEY SIDE STRIP | J | 1 | 3/8" LOCK NUT |
| E | 4 | PLASTIC IDLER PULLEY | K | 2 | FLAT CLAMP WELDMENT |
| F | 1 | STEEL IDLER PULLEY | L | 2 | 1/2" X 1 1/4" Lg. MACH. BOLT |



6. Once all support assemblies are installed, move back to the curtain operator and begin stringing the 1/8" cables through the support assemblies. Each cable is marked with a letter. Refer to the installation drawing to determine the end position of each cable. Each cable originates at the curtain operator and will pass through subsequent support assemblies until it reaches its specific designation. Let each cable reach the floor. They may later be used to raise the curtain fabric to the support assemblies if a 02080-INS installation kit is not available.

NOTE: If a 02080-INS Installation kit is available do not secure 1/8" cables to top tube as described in Step 7 and refer to Step 8.

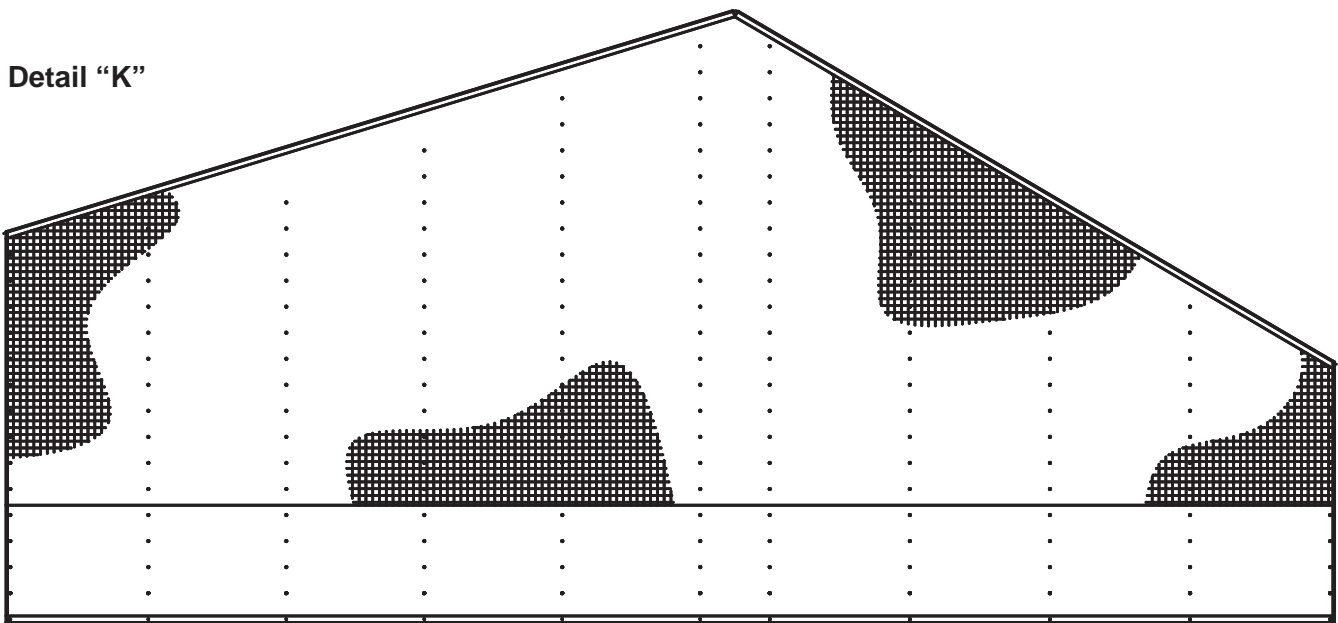
NOTE: If a 02080-INS Installation kit is NOT available skip Step 8 and use method as described in Steps 7 and 9.

MODEL NO. 665 SLOPE-FOLD[®] DIVIDER CURTAIN FABRIC CONSIDERATIONS

Curtain fabric is manufactured with additional fullness to allow it to retract to the particular contour of the building. DO NOT STRETCH MATERIAL TIGHT. Distribute the additional fullness along the entire length of the curtain before drilling holes into the bottom tube for truss head bolts used to secure the hoist cables.

The curtain will have grommet lines running vertically that will correspond with the hoist cables and supports.

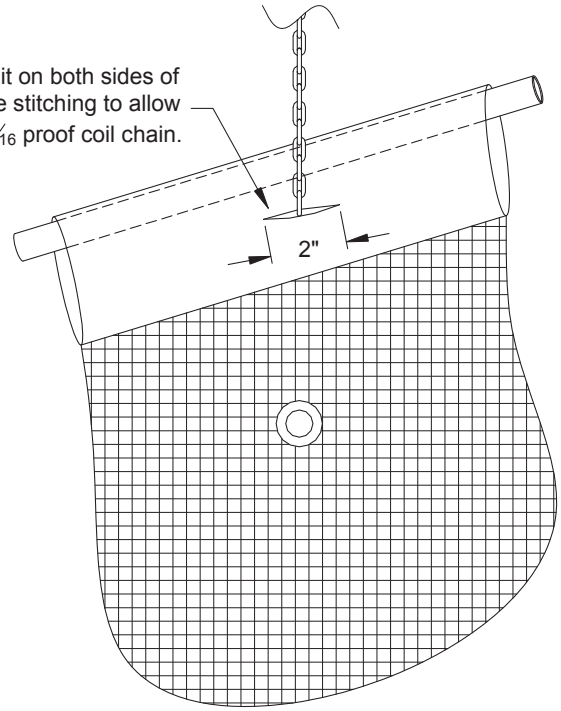
Detail “K”



7. Layout the divider curtain fabric. Install the 1-5/16" OD tube in top pocket. Refer to Detail "L". At each tube splice location secure with pop rivets (HDWE08042000) and wrap joint with duct tape. Cut a 2" slit in top pocket at each grommet line. Do not cut into seam. The slits will be used to initially raise the fabric to the support assemblies then permanently securing top tube with 3/16" proof coil chain. Position fabric and tube along the 1/8" cables extending down from the supports and secure each cable to the top tube with 1/8" cable clamp (not provided). Cables should be taut. Do not trim.

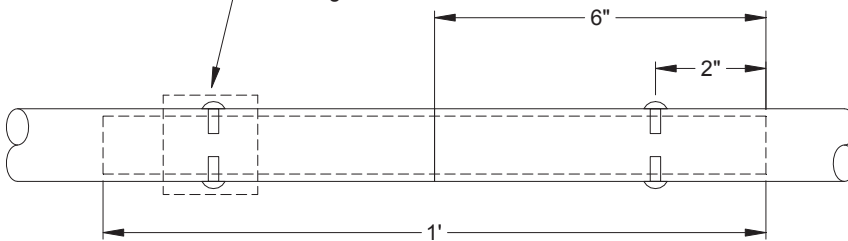
Detail "L"

Cut 2" long slit on both sides of top hem above stitching to allow access for $\frac{3}{16}$ proof coil chain.



Detail "M"

Installer Note: Apply duct tape around all rivet connections along the top and bottom tubes to prevent tearing of curtain fabric.



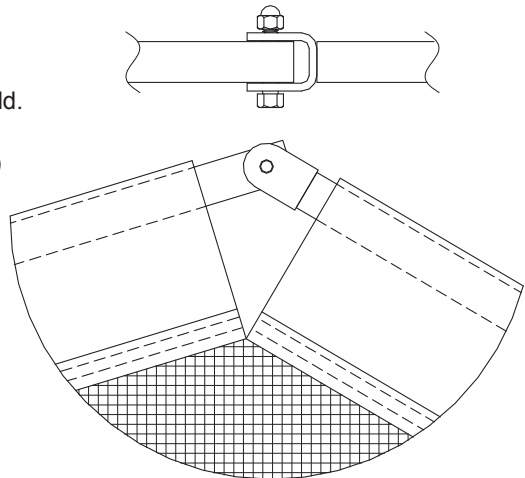
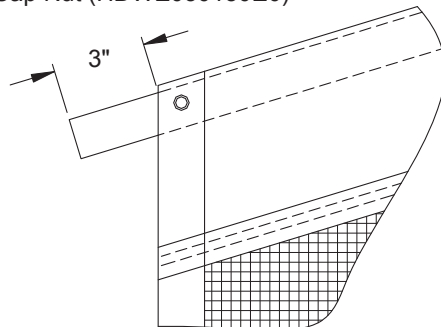
Secure Top and Bottom Tube Sections together using splice kit (XSLV67001000).

1x CUT TUBE $\frac{3}{4}$ SCH40 STANDARD PIPE X 12" (TUBR00740002)
4x POP RIVET- $\frac{3}{16}$ X.45 (HDWE08042000)

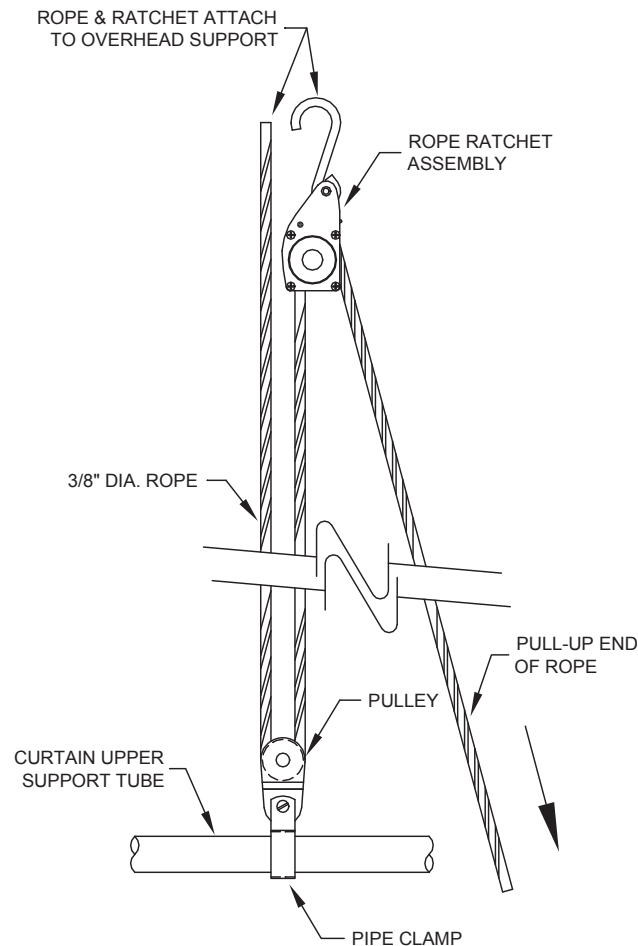
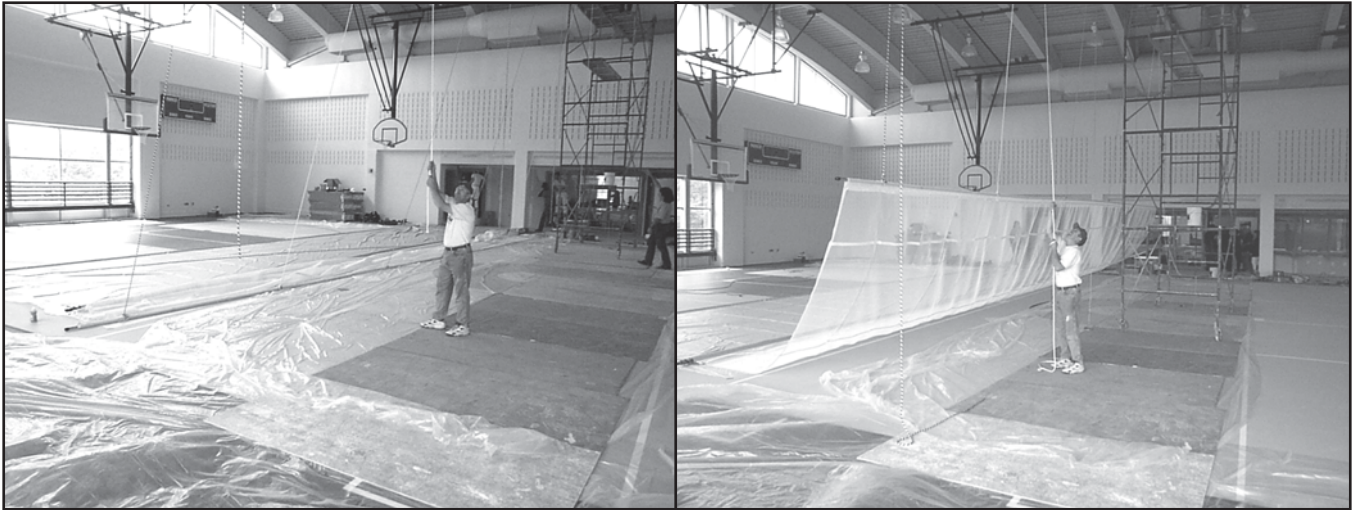
Detail "N"

Top tubes join at the peak with a hinge.
Secure the hinge with the following hardware:
Hex Bolt $\frac{1}{2}$ "-13 x 2-1/2" (HDWE011640E0)
Locking Type Cap Nut $\frac{1}{2}$ "-13 (HDWE030080E0)

Installer uses grommets as guides and drills top tube in field.
Top Pocket is fastened to Top Tube with hardware:
Truss HD Mach Screw $\frac{5}{16}$ "-18 x 2-1/2" (HDWE060900E0)
Flat Washer $\frac{3}{8}$ " (HDWE050040E0)
Locking Type Cap Nut (HDWE030150E0)



8. The recommended method of raising the curtain fabric to the support assemblies is by utilizing a 02080-INS installation kit. The kit consists of a set of ropes, pulleys, clamps, and rope ratchet mechanisms. The kit provides a block and tackle type mechanical advantage, along with a ratchet type lock to prevent the curtain from falling while being raised. Start raising the curtain slowly and evenly, continue raising the curtain until the upper support tube can be attached to the support assemblies. Feed 3/16" proof coil chain through the slit in the top pocket, under the 1 5/16" tube and secure to support assembly with S-hooks. Make adjustments as required to maintain a consistent distance between the support assemblies and top of curtain. Curtain fabric should also maintain an equal distance of one inch above the finished floor along its entire length.



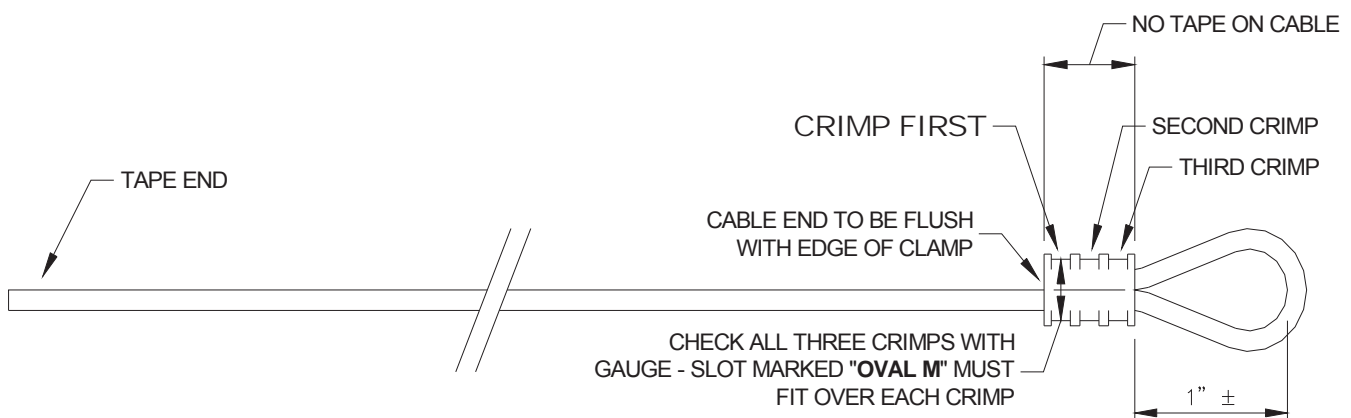
9. Energize winch to raise fabric and top tube to the support assemblies. Stop when the top tube is 1'-7" from the underside of the attachment steel or when the bottom of curtain fabric is 1" above the finished floor. Secure the tube at each support location with 3/16" proof coil chain and S-hooks. Do not permanently close the S-hooks or trim chain until final adjustments have been made. Remove the cable clamps at each support location and carefully pull the cables back through the slit.

10. Lace the cables through the grommets at each support. Make sure that all of the cables exit the bottom grommet on the same side of the curtain.

11. Install bottom 1-5/16" O.D. tube into fabric pocket. Refer to installation drawing for exact configuration. **Fabric will appear long.** This is normal. All model 665 Slope-Fold divider curtains have added fullness built in. This allows the material to be raised to meet a specific ceiling contour, minimizing stress on the mesh and vinyl as it conforms to the contour. Install each end cable first and work towards center. The cable secures to bottom tube by means of a 5/16" truss head machine screw. Refer to Detail "O". Should this be your first Slope-Fold® Curtain installation, it is advised the bottom cable loop be secured with a 1/8" "U"-bolt type clamp for initial adjustments. Once adjusted, the "U"-bolt clamps are to be removed and replaced with the 1/8" Nico-press clamps provided (ROPE0004200). **Secure all cables at spacing indicated on installation drawings. Distribute loose material equally between cable lines.**

Crimping Process

1. Remove all tape from area of cable to be secured with clamp.
2. The cable must be flush with the end of the Nicopress clamp as shown.
3. Crimp the Nicopress clamp in the sequence shown below – first at the end furthest away from the loop, next at the middle of the clamp, and last at the end closest to the loop.
4. Three (3) crimps must be visible on the assembly.
5. Check the assembly with the gauge at the start of each order. Check all three crimps. The slot on the gauge marked "Oval M" must fit over each crimp. If it does not, then the crimp is too loose. The cable assembly must be rejected. The crimping tool must be adjusted accordingly.



Detail "O"

HOIST CABLE CONNECTION TO BOTTOM TUBE

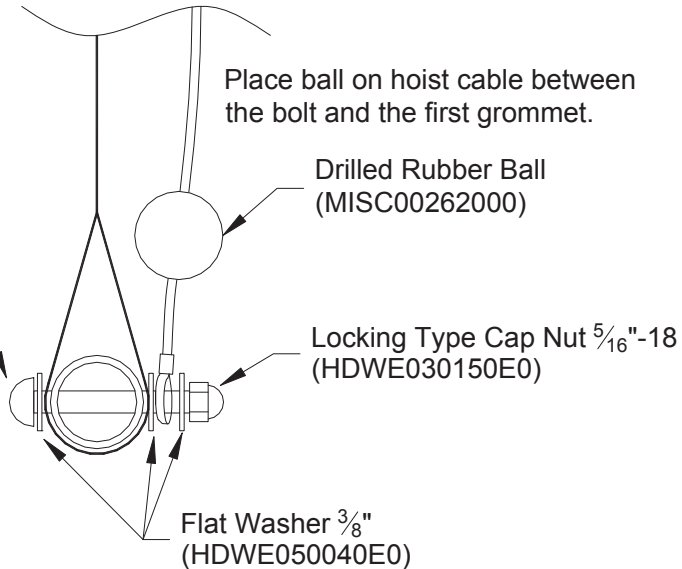
Truss HD Mach Screw
 $\frac{5}{16}$ "-18 x 2 $\frac{1}{2}$ "
(HDWE060900E0)

Place ball on hoist cable between
the bolt and the first grommet.

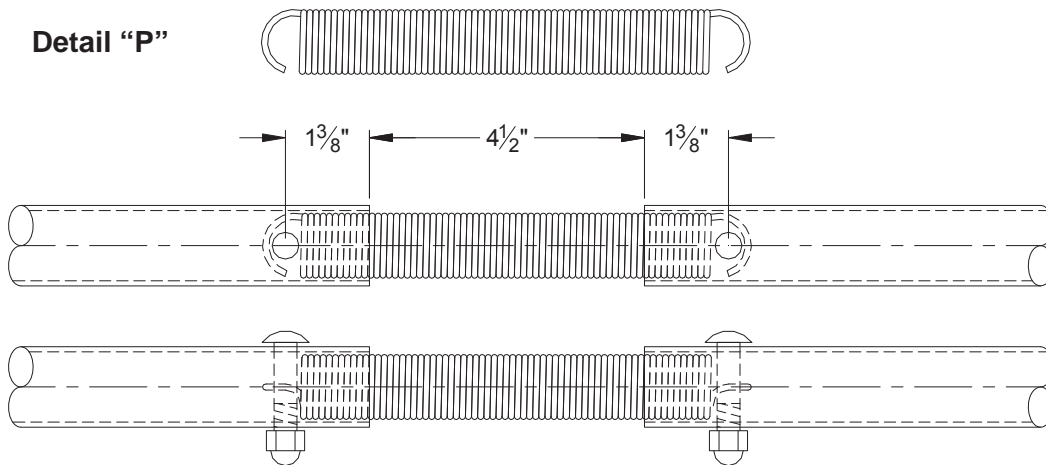
Drilled Rubber Ball
(MISC00262000)

Locking Type Cap Nut $\frac{5}{16}$ "-18
(HDWE030150E0)

Flat Washer $\frac{3}{8}$ "
(HDWE050040E0)



Detail "P"



There will be a 4 $\frac{1}{2}$ " gap in the bottom tubes directly below each peak. The bottom tubes will be connected by a spring.

The installer drills $\frac{7}{16}$ " holes in bottom tubes and bolts the spring in place with the following hardware:

2x CARRIAGE BOLT $\frac{3}{8}$ "-16 x 2 $\frac{1}{4}$ " GR5 (HDWE020570E0)

2x LOCKING TYPE CAP NUT $\frac{3}{8}$ "-16 (HDWE030050E0)

1x EXTENSION SPRING 8" LG (SPNG00040)

12. Secure top corners of fabric to top tube with $\frac{5}{16}$ "x 2 $\frac{1}{2}$ " button head cap screw and acorn locknut. Grommets are in place on top fabric pocket for this purpose.

13. Raise curtain and adjust accordingly. In most cases, the fabric maintains a consistent 1'-6" distance from support steel and is 1" above the finished floor.

14. Limit switch adjustment and field wiring details and requirements are listed in the electric manual.

15. Once final adjustments are made and the divider curtain has successfully run through three folding cycles, close all "S"-hooks, trim excess cable and cut off excess chain. The key switch or Powr-Touch[®] pad must be mounted in a location that permits full view of the curtain by the operator.

16. Demonstrate the operation of this unit to an individual at the site, who is responsible for the safe operation and maintenance of this equipment. Point out safety concerns and the necessity of using a Porter key switch in the event that it has not been installed. Go over each operational instruction in this manual, ensuring the individual is clear in understanding the forces developed by the model No. 665 divider curtain system, and the necessity of having only trained, authorized personnel operate this equipment. Provide the key switch assembly or Powr-Touch[®] Pad (if not installed) and the additional vinyl material to the individual signing off on the installation of the curtain.

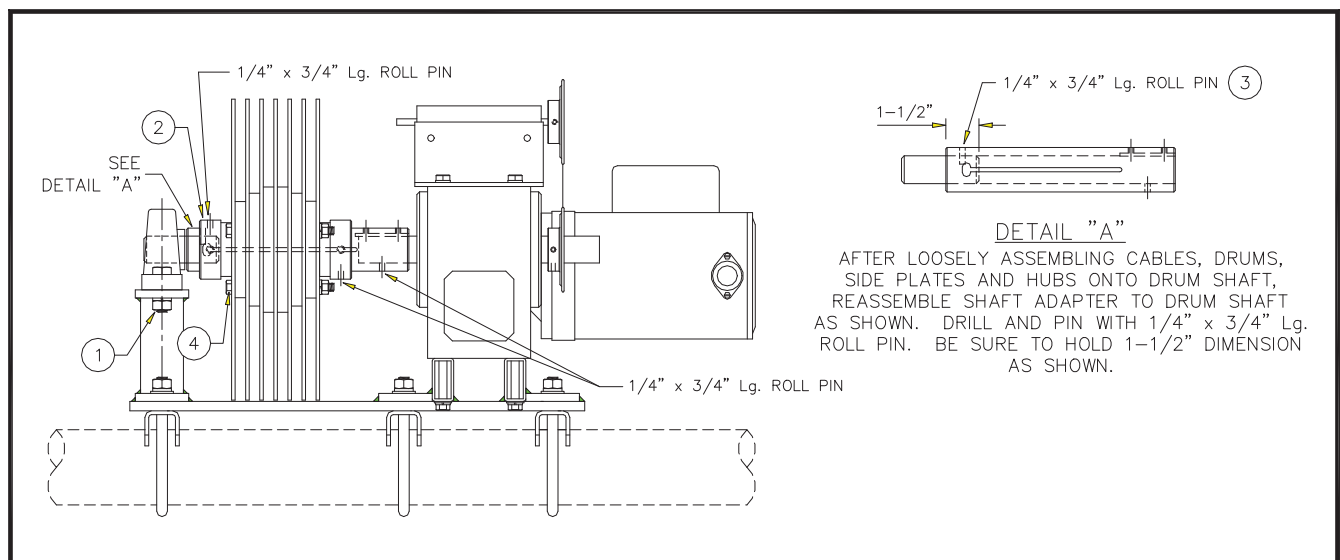
INSTRUCTIONS FOR REVISING THE WINCH VARIABLE DRUM CONFIGURATION


SHOULD THE DRUMS AND /OR CABLES NOT BE IN THE PROPER RATIO SEQUENCE DUE TO FIELD CONDITION CHANGES, THE FOLLOWING INSTRUCTIONS WILL GUIDE YOU THROUGH RECONFIGURING DRUM OR CABLE SEQUENCE.

WARNING

THERE MUST BE NO LOAD ON THE WINCH (CURTAIN IS IN THE "DOWN" POSITION) AND THE UNIT MUST BE UNPLUGGED. THIS MUST ALSO BE DONE AT GROUND LEVEL, NOT AT THE OVERHEAD SUPPORT ATTACHMENT!

1. Remove the two (2) bolts supporting the bearing block. Slide the bearing block off.
2. Remove set screw on the collar which keeps the drums in place.
3. Drill out the $\frac{1}{4}$ " x $\frac{3}{4}$ " roll pin on the end drum shaft. The shaft MUST be backed out to remove the cable.
4. Remove the (3) three machine bolts from the drum side plates. The side plates, drums, and cables can now be removed and reconfigured per the revised installation drawing(s).
5. Reverse the above sequence for reassembly of the unit. (See Detail "A")



 **WARNING:** This product can expose you to Vinyl Chloride, which is known to the State of California to cause cancer. For more information go to www.p65warnings.ca.gov.

D

THIS PRINT IS THE PROPERTY OF PORTER ATHLETIC EQUIPMENT COMPANY AND MAY NOT BE
REPRODUCED WITHOUT WRITTEN PERMISSION

INSTALLER NOTES

porter[®]

601 Mercury Drive, Champaign, IL U.S.A., 61820

www.porterathletic.com

(888) 277-7778

SAVE THESE INSTRUCTIONS FOR FUTURE USE