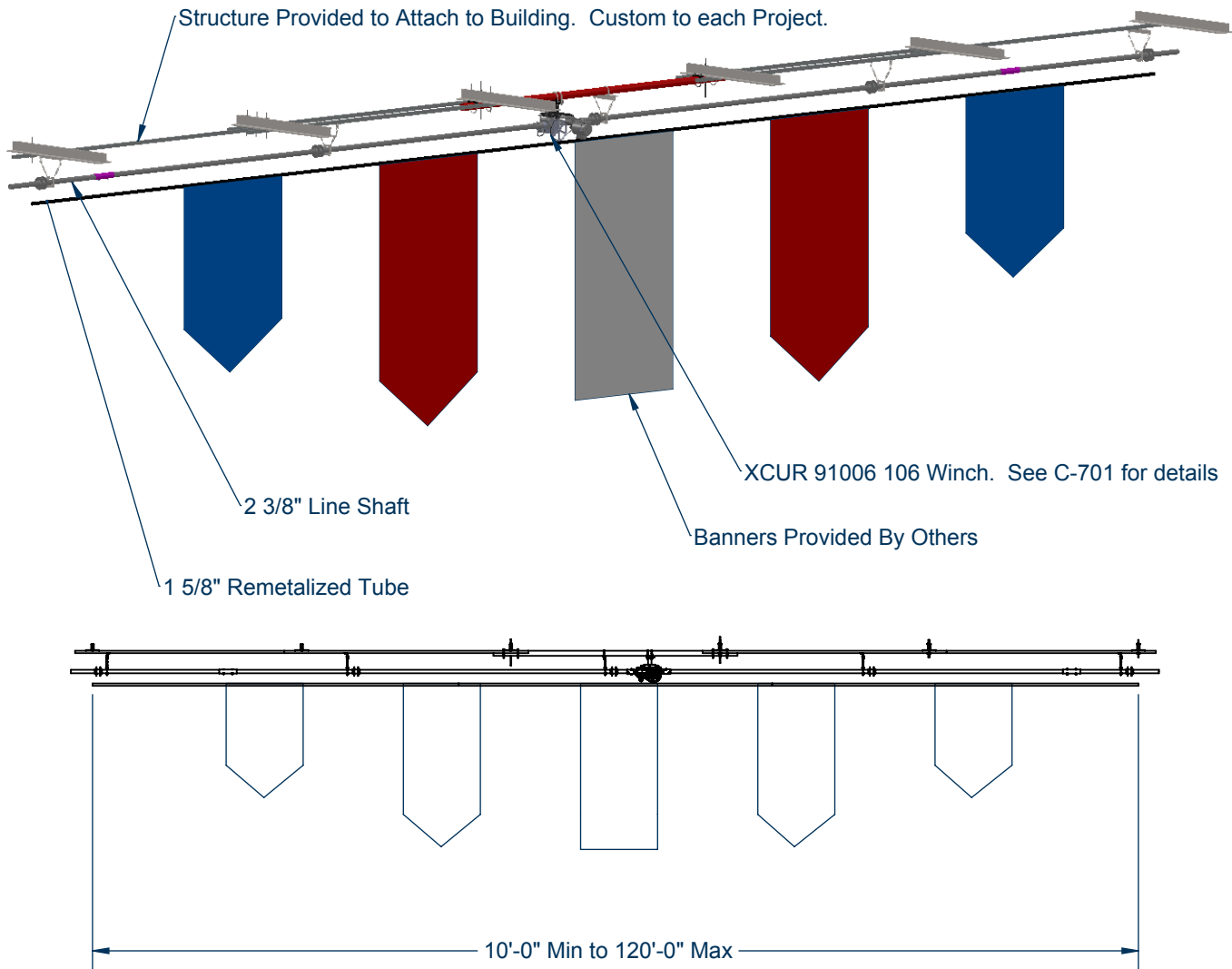


90670B00 - Ceiling Suspended Banner System

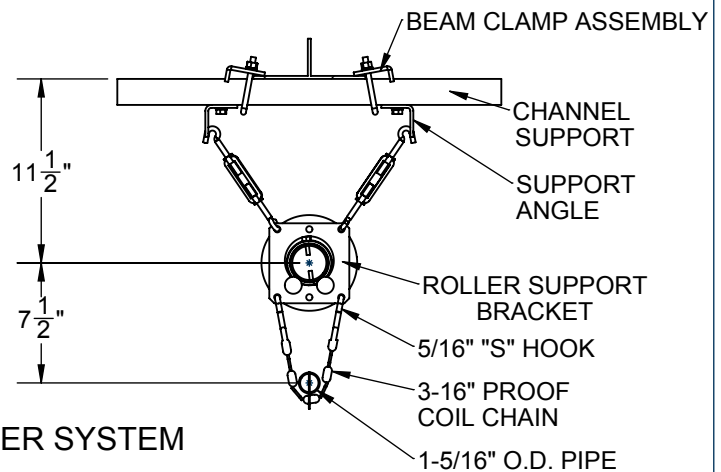
CEILING SUSPENDED BANNER SYSTEM



Banners Attach to 1 5/8" Suspended Tube. Tube supported a minimum of every 15' by 1/8" Cable. supported in Cable Drums. Banners may need to be positioned or altered to attach.

Product also available in 690-B Radius Style. Contact Porter for more details

STANDARD ATTACHMENT,
MAY VARY BASED ON
BUILDING STRUCTURE



- 90670B00 CEILING SUSPENDED BANNER SYSTEM

90670B00 - Ceiling Suspended Banner System

SPECIFICATIONS

Traveling support tube shall be hoisted by 1/8" diagonal vandal-proof galvanized cable (2,100 lb. breaking strength each cable, spaced between 10'-0" and 15'-0" apart) passing thru metal spur grommet type cable guides on approximate 18" centers.

Upper ends of hoist cables shall terminate into individual hoist drums positioned on continuous zinc-plated 2-3/8" O.D. tube line shaft arrangement. Line shaft shall turn in support assemblies equipped with four steel ball bearing wheel rollers. Each support assembly shall be positioned adjacent to a cable hoist drum. Support assemblies shall be secured to structural roof framing supports by means of threaded rods and support chains to provide structural integrity and accommodate all slopes or building camber.

See winch specifications for more information on included Porter winch system and control options. (see C-701)

All metal parts not zinc-plated shall be powder coated. See swatch card SMPL00048037 for standard color options. (contact Porter for custom color requests)

WARRANTY

- 670-B Hoist Systems come with a 1 year limited warranty.
- Other components may be covered by their own extended warranty.

ACCESSORIES

- Audible Motion Alarm (No. 12005100)

LEED® SUBMITTAL INFORMATION

Credit	Measure
MRc4-Recycled Content	Post Consumer Average 10.0% Post Industrial 0%
MRc5-Regional Materials	Raw materials originate from multiple sources so origin point cannot be determined. Final Manufacturing/Assembly in Champaign, IL 61822