

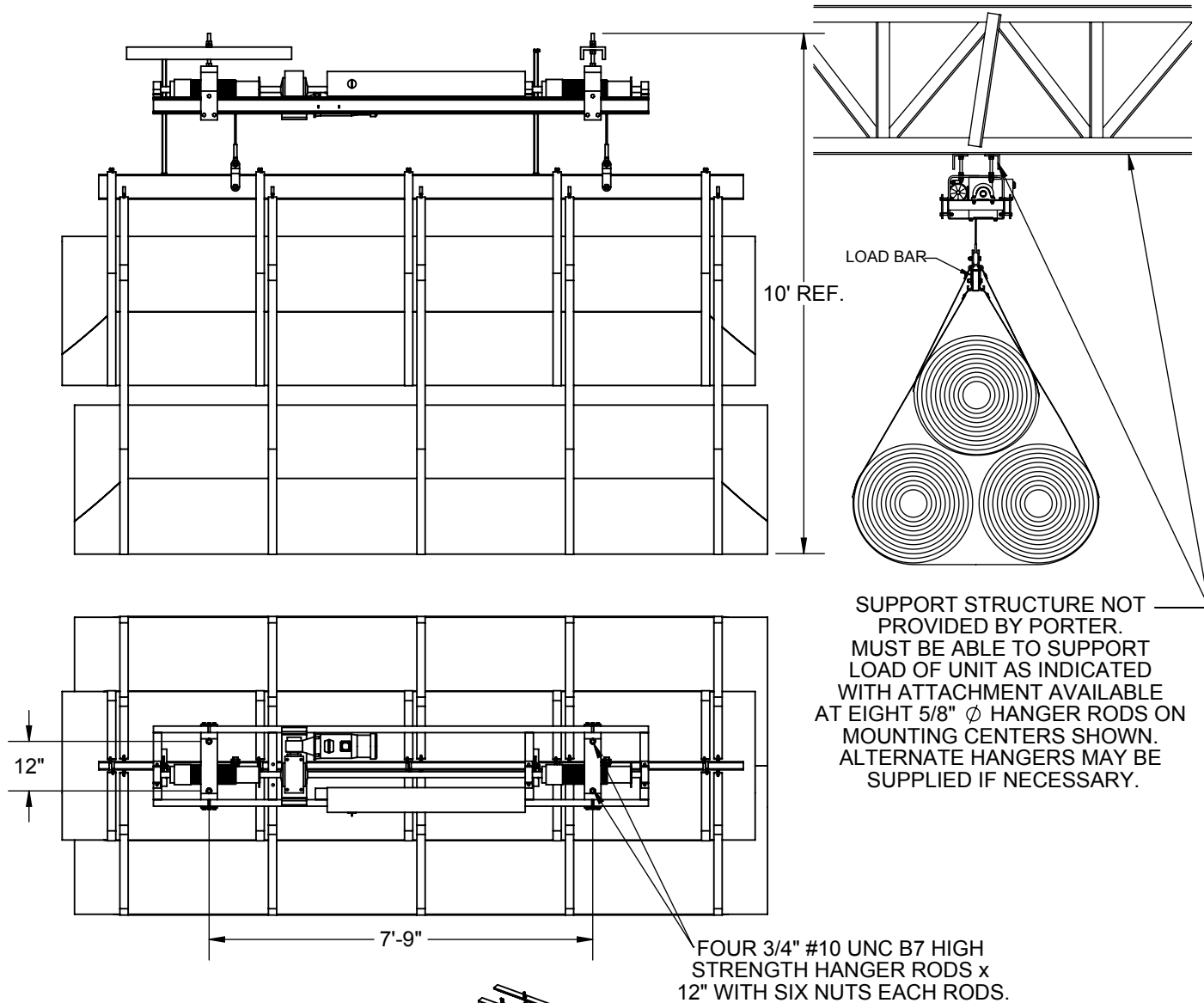
# 91105100 - STATIONARY "MINI" MAT MOVER

CEILING SUSPENDED, STATIONARY UNIT  
MAX THREE 14' x 42' MATS

**porter**  
WWW.PORTERATHLETIC.COM/FACILITY

MAT MOVER SPECIFICATION SHEET

M-1105-1



SUPPORT STRUCTURE NOT PROVIDED BY PORTER.  
MUST BE ABLE TO SUPPORT LOAD OF UNIT AS INDICATED WITH ATTACHMENT AVAILABLE AT EIGHT 5/8" Ø HANGER RODS ON MOUNTING CENTERS SHOWN. ALTERNATE HANGERS MAY BE SUPPLIED IF NECESSARY.

MAT MOVER MAY BE ATTACHED EITHER PARALLEL WITH BUILDING STRUCTURE OR PERPENDICULAR. (STRUCTURE NOT PROVIDED BY PORTER)

DESIGN LOAD	
CARRIAGE ASSEMBLY	753 LBS
13 FT LOAD BAR	135 LBS
SINGLE SLING (ONE MAT)	32 LBS
SINGLE SLING (TWO MATS)	64 LBS
3 14' x 42' MATS	1764 LBS
15% IMPACT	412 LBS
<b>TOTAL LOAD (3 14' x 42' MATS)</b>	<b>3160 LBS</b>

\_\_\_\_\_ - 91105100 CEILING SUSPENDED, STATIONARY UNIT  
 \_\_\_\_\_ - SIZE OF MATS  
 \_\_\_\_\_ - ROLLED MAT DIAMETER  
 \_\_\_\_\_ - SLING COLOR SELECTION (SEE SMPL00048021)

**porter**  
1-800-637-3090 PORTER@PORTERATHLETIC.COM  
© COPYRIGHT 2017 PORTER ATHLETIC - ALL RIGHTS RESERVED

PROJECT NUMBER

PROJECT NAME

6/23/2017

# 91105100 - STATIONARY "MINI" MAT MOVER

CEILING SUSPENDED, STATIONARY UNIT  
MAX THREE 14' x 42' MATS

## SPECIFICATIONS

Hoist construction shall consist of one fully welded steel ladder frame construction carriage comprised of two 4" (5.4 lb.) continuous "C" channel side-rails, with fully assembled drive and lifting mechanism. The carriage shall be suspended by two (2) heavy-duty steel hangers positioned 7'-9" on center. Hoist, load bar and sling shall be capable of lifting and supporting up to three (3) 14' x 42' wrestling mats, weighing one pound per square foot (1,800 lb. maximum).

The frame assembly shall include a fully enclosed 6" x 4'-0" lg. control panel, factory wired to minimize field wiring requirements. The control panel shall be provided as 230 volt, 3 phase (208 volt optional), including a cover mounted main disconnect switch, control circuit transformer with primary and secondary protection, and two full voltage reversing contactors with motor circuit protection. Additional safety feature includes an audible motion alarm, activated when the unit is in the vertical travel cycle, and shall be furnished as standard. A redundant "UP" limit switch shall be pre-wired parallel with standard "UP" limit switch for fail-safe operation.

The hoist system shall be driven by one (1) heavy-duty 1.5 HP C-face electric motor with integral 6 ft. lb. brake mechanism and automatic overload protection, attached to a 200:1 ratio gearbox assembly. Under no-load conditions, RPM of motor is 1,725; RPM of drum is 4.5. Approximate hoist speed shall be 4.5 feet per minute in both the up and down travel cycles.

The hoist motor shall be controlled by a special dual key, flush wall mounted momentary key switch, which cannot be instantly reversed, providing a safety provision to prevent damage to the motor. The switch assembly shall be furnished with one (1) 4-1/2" x 4-1/2" stainless steel cover plate for mounting into a recessed two-gang masonry wall box by the electrical contractor.

Actual hoisting of mats shall be accomplished by means of two (2) 5/16" 6-strand, 37 wires per strand, fiber core, 4.26-ton breaking strength steel cables, each secured to a 4" diameter drum, and terminating at a heavy wall 2" x 6" x 13'-0" long steel load bar. The mats shall be carried by means of a 19 oz. vinyl fabric sling (per square yard, containing antibacterial, fungi-resistant and flame-retardant chemicals to meet requirements of ASTM E-84 Class A Rating (25 Flame Spread, 450 Smoke Development), and NFPA-701 large scale, ULC S-109 large and small scale, and State of California test requirements).

The sling shall be attached to the load bar by means of a 2" wide nylon strap, encompassing the full sling perimeter, terminating at the load bar with a load-rated (5,000 lb. breaking strength) ring. For safety purposes, sling capacity shall govern the lift capacity of the system.

The support structure will be supplied by the owner to comply with building design, located on 7'-9" centers, specified by the architect or structural engineer, and installed by an appropriate contractor.

Wiring of all electrical components shall be in accordance with national and local electrical codes, and in accordance with manufacturer's instructions. All conduit, wiring, junction boxes, and components not specified herein shall be furnished and installed by the electrical contractor.

### WARRANTY

- Mat Movers® come with a 1 year limited warranty.
- Other components may be covered by their own extended warranty.

### ACCESSORIES

- Saf-Strap (No. 797)
- Saf-Strap (No. XCLP79702)

### VINYL COLOR OPTIONS

- See SMPL00048035

### LEED® SUBMITTAL INFORMATION

Credit	Measure
MRc4-Recycled Content	Post Consumer Average 0%    Post Industrial 0%
MRc5-Regional Materials	Raw materials originate from multiple sources so origin point cannot be determined. Final Manufacturing/Assembly in Champaign, IL 61822