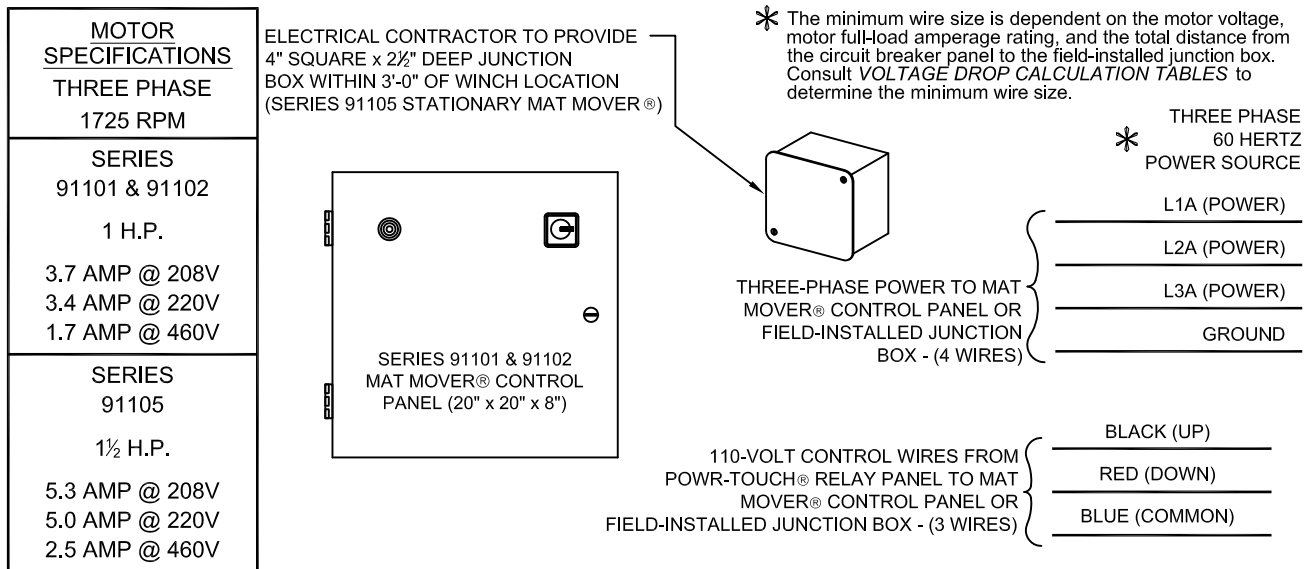
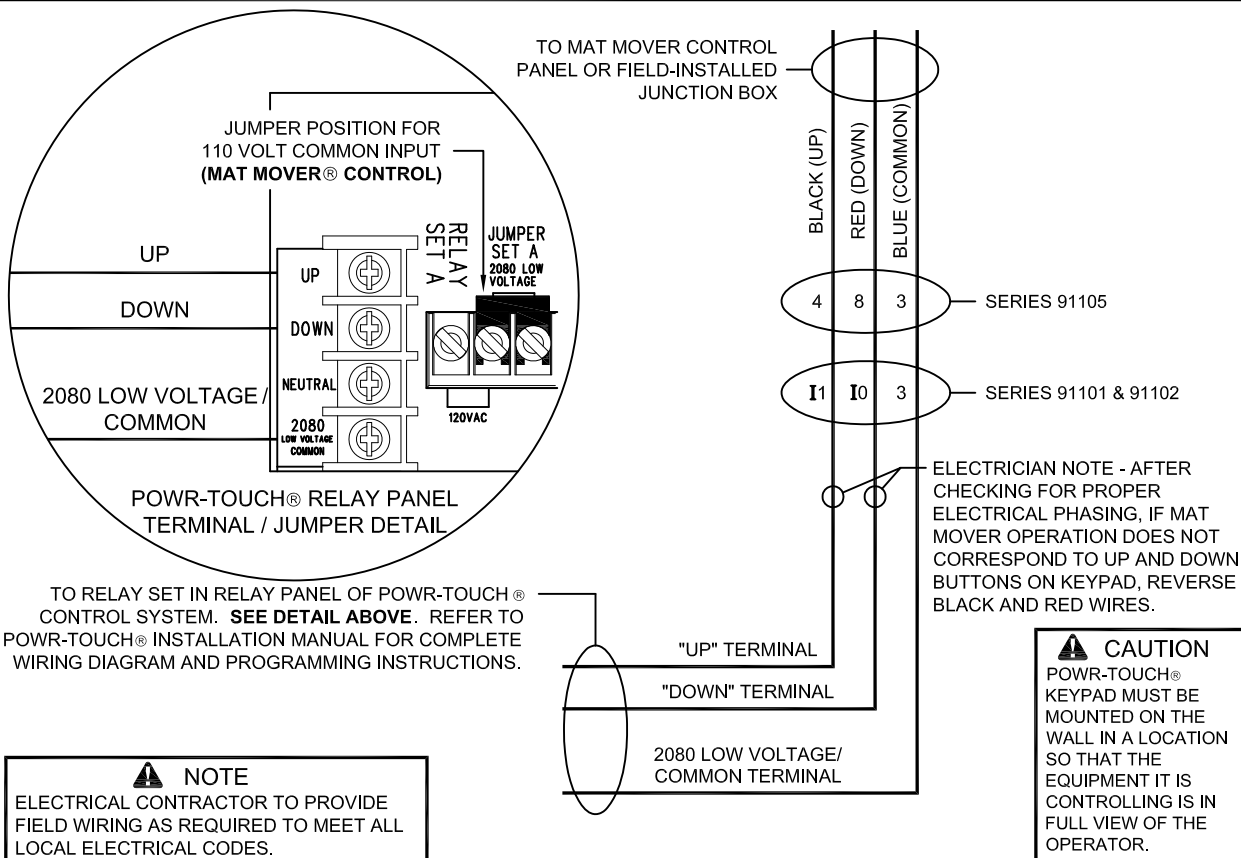


STATIONARY MAT MOVER POWR-TOUCH® CONTROL WIRING DETAIL

ELECTRIC WINCH FIELD WIRING DETAILS & REQUIREMENTS



NOTE: FIELD-INSTALLED JUNCTION BOX PROVIDED BY OTHERS



IMPORTANT NOTE - PERFORMANCE OF THIS WINCH IS BASED ON ___ VOLTS AT MOTOR TERMINALS. VOLTAGES LESS THAN ___ VOLTS WILL AFFECT HOISTING CAPACITY AND RESULT IN DAMAGE TO MOTOR, THUS VOIDING WARRANTY. **SUBSTITUTION** OF THIS CONTROL SYSTEM WILL VOID ALL WARRANTIES AND WILL RENDER THE OPERATION OF MAT MOVERS UNSAFE.