

# 1996 POWR-LINE VOLLEYBALL STANDARD

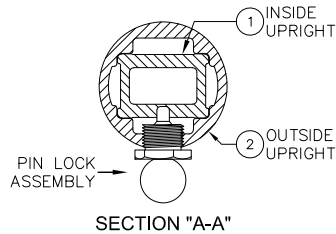
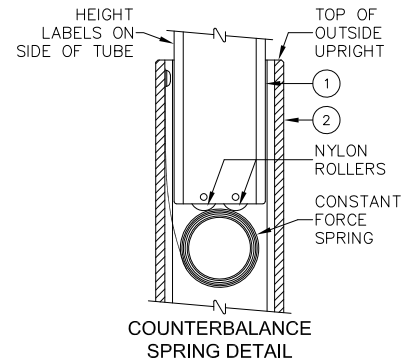
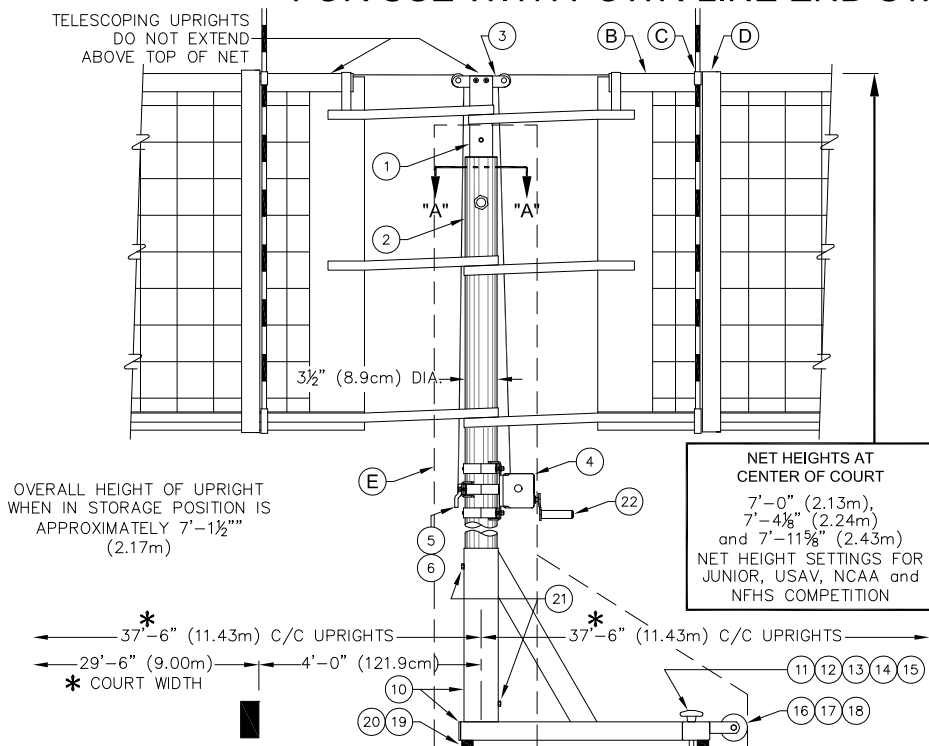
## PORTABLE 3½" OD ALUMINUM VOLLEYBALL CENTER STANDARD FOR USE WITH POWR-LINE END STANDARDS

PORTER

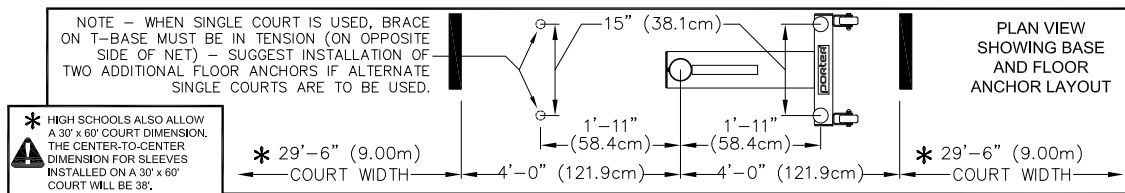
WWW.PORTERATHLETIC.COM/FACILITY

VOLLEYBALL SPECIFICATION SHEET

V-1996



| PARTS LIST: 1996 |      |   |
|------------------|------|---|
| No.              | QTY. | DESCRIPTION                               |
| 1                | 1    | UPRT 00213 203 INSIDE UPRIGHT ASSEMBLY    |
| 2                | 1    | UPRT 00314 001 OUTSIDE UPRIGHT ASSEMBLY   |
| 3                | 1    | PULY 00062 000 PULLEY ASSEMBLY            |
| 4                | 1    | WINH 00113 POWR-SELECT WINCH              |
| 5                | 1    | WINH 00115 CENTER STANDARD CLAMP          |
| 6                | 1    | WINH 00116 CENTER STANDARD NET TIE-OFF    |
| 7                | 1    | LABL 00167 000 HEIGHT LABEL: 7'-11½"      |
| 8                | 1    | LABL 00168 000 HEIGHT LABEL: 7'-4½"       |
| 9                | 1    | LABL 00169 001 HEIGHT LABEL: 7'-0"        |
| 10               | 1    | BASE 00103 001 T-BASE                     |
| 11               | 2    | HAND 00001 000 HANDWHEEL WITH STUD        |
| 12               | 2    | SPNG 00004 000 SPRING                     |
| 13               | 2    | HDWE 55007 000 1/2" NYLON FLATWASHER      |
| 14               | 2    | HDWE 05005 000 1/2" FLATWASHER            |
| 15               | 2    | HDWE 55008 000 1/2" RETAINER WASHER       |
| 16               | 2    | CSTR 00001 000 WHEEL                      |
| 17               | 2    | HDWE 01208 000 3/8" x 2-1/2" Lg. BOLT     |
| 18               | 2    | HDWE 03005 000 3/8" LOCKING CAP NUT       |
| 19               | 3    | FEET 00002 000 RUBBER FOOT                |
| 20               | 6    | HDWE 06016 000 1/4" x 3/4" Lg. CAP SCREW  |
| 21               | 2    | HDWE 09015 000 5/16" x 3/8" Lg. SET SCREW |
| 22               | 1    | WINH 00114 CRANK FOR POWR-SELECT WINCH    |



- 1996 POWR-LINE PORTABLE CENTER STANDARD (EACH)
- 19969XX POWR-LINE PORTABLE CENTER STANDARD W/ PAD (EACH)
- 19969XXSP POWR-LINE PORTABLE CENTER STANDARD W/ GRAPHIC PAD (EACH)

| QTY | PART No. | DESCRIPTION                            | No. | PAGE No. |
|-----|----------|--|-----|----------|
|     | VARIOUS  | FLOOR ANCHORS (NOT SHOWN) SPECIFY TYPE |     | VARIOUS  |
|     | 2295     | UNIVERSAL VOLLEYBALL NET (EACH)        | B   | V-2295   |
|     | 2297     | POWR-SELECT NET ANTENNA (PAIR)         | C   | V-2297   |
|     | 00546000 | BOUNDARY MARKERS w/ ANTENNA (PAIR)     | D   | V-546    |
|     | 8361XX   | PORTABLE CENTER STANDARD PADS (EACH)   | E   | V-836    |

PORTER®

888-277-7778 PORTER@PORTERATHLETIC.COM  
© COPYRIGHT 2020 PORTER ATHLETIC - ALL RIGHTS RESERVED

PROJECT NUMBER

PROJECT NAME

02/27/2020

# 1996 POWR-LINE VOLLEYBALL STANDARD

## PORTABLE 3½" OD ALUMINUM VOLLEYBALL CENTER STANDARD FOR USE WITH POWR-LINE END STANDARDS SPECIFICATIONS

### PORTER No. 1996 POWR-LINE PORTABLE VOLLEYBALL CENTER STANDARD (EACH)

Standard shall be designed for multiple court use when used in conjunction with No. 1995 Powr-Line volleyball end standards.

Post shall be telescoping type incorporating a spring-loaded pin/plunger mechanism for instant net height settings to meet all USAV, NCAA and NFHS requirements for competition. Post shall be furnished with height marking labels for BOYS'/MEN'S height setting of 7' 11-5/8" (2.43m), GIRLS'/WOMEN'S height setting of 7' 4-1/8" (2.24m), and 12 YEAR AND UNDER height setting of 7'-0" (2.13m). Posts that do not telescope (that extend above the top of the net) will not be approved as equal.

Bottom upright shall be extruded of 6063T6 high strength, lightweight aluminum alloy with a special internal reinforcing rib pattern. (Non-telescoping or steel uprights will not be approved as equal.) Upright shall be 3-1/2" (8.9cm) O.D. to fit into T-Base assembly.

Bottom end of upright shall be supported in a compact, 18-1/2" x 31-1/2" (47cm x 80cm), T-Shaped, unitized steel base assembly incorporating a 3-3/4" (9.5cm) O.D. x 19" (48.3cm) long, heavy-wall sleeve with two (2) set screws to lock upright in position. Sleeve shall be rigidly braced to T-Base with a unitized type rectangular, 2-1/2" x 1-1/2" (6.3cm x 3.8cm) steel tube type gusset member to rigidly brace entire unit. Base shall be finished in a durable, powder-coat finish.

Base shall be furnished with two (2), 3" (7.6cm) diameter, non-marking casters located to easily tip and roll standard to and from storage areas. Base assembly shall also be provided with two (2) spring-loaded handwheel/threaded stud (1/2-13) assemblies for anchoring into floor anchors. Specify type of floor anchor required – two (2) per base. Base shall also incorporate three (3) non-marking gray rubber floor pads.

Upper telescoping (adjustable) upright shall be extruded from the same aluminum alloy as the bottom upright with a special rectangular configuration to eliminate rotation. Upper end of telescoping upright shall be equipped with dual pulleys to reduce cable drag and undue tension on entire system.

Upper telescoping upright shall be adjustable in height by means of a special spring-loaded pin/plunger mechanism located on the bottom upright approximately 5'-4" (1.63m) above floor level. Pin/plunger mechanism shall locate upper telescoping upright at the three net heights of 7' 11-5/8", 7' 4-1/8" and 7'-0". Telescoping upright shall be counterbalanced in a static position when adjustment lock is disengaged by means of a special, constant tension spring mechanism located inside the lower upright assembly to eliminate the possibility of accidentally falling while making height adjustments. Bottom end of telescoping upright shall be equipped with special, internally mounted nylon rollers to minimize friction and wear of constant tension spring mechanism.

Bottom upright and telescoping upright shall be finished in a durable clear anodized finish.

Tensioning reel shall be a vertical lift, worm gear winch with steel frame. Frame construction shall be of interlocking steel for high rigidity and precise alignment, semi enclosed for safety, and powder coated for corrosion resistance. Self-locking worm drive will prevent snap back or loss of tension. Net shall attach directly to the winch eliminating the need for straps.

#### WARRANTY

Volleyball system furnished with the following warranty:

Uprights – 10 year limited warranty

Winch – 1 year limited warranty

ISSUED FEBRUARY 27, 2020, SUBJECT TO CURRENT MANUFACTURING PROCEDURES AND CHANGES

COPYRIGHT 2020 - PORTER ATHLETIC - ALL RIGHTS RESERVED

PORTER@PORTERATHLETIC.COM

**PORTER**  
WWW.PORTERATHLETIC.COM/FACILITY

**VOLLEYBALL SPECIFICATION SHEET**

V-1996

02/27/2020