

1995 POWR-LINE VOLLEYBALL SYSTEM

PORTABLE 3 1/2" OD ALUMINUM VOLLEYBALL END STANDARDS

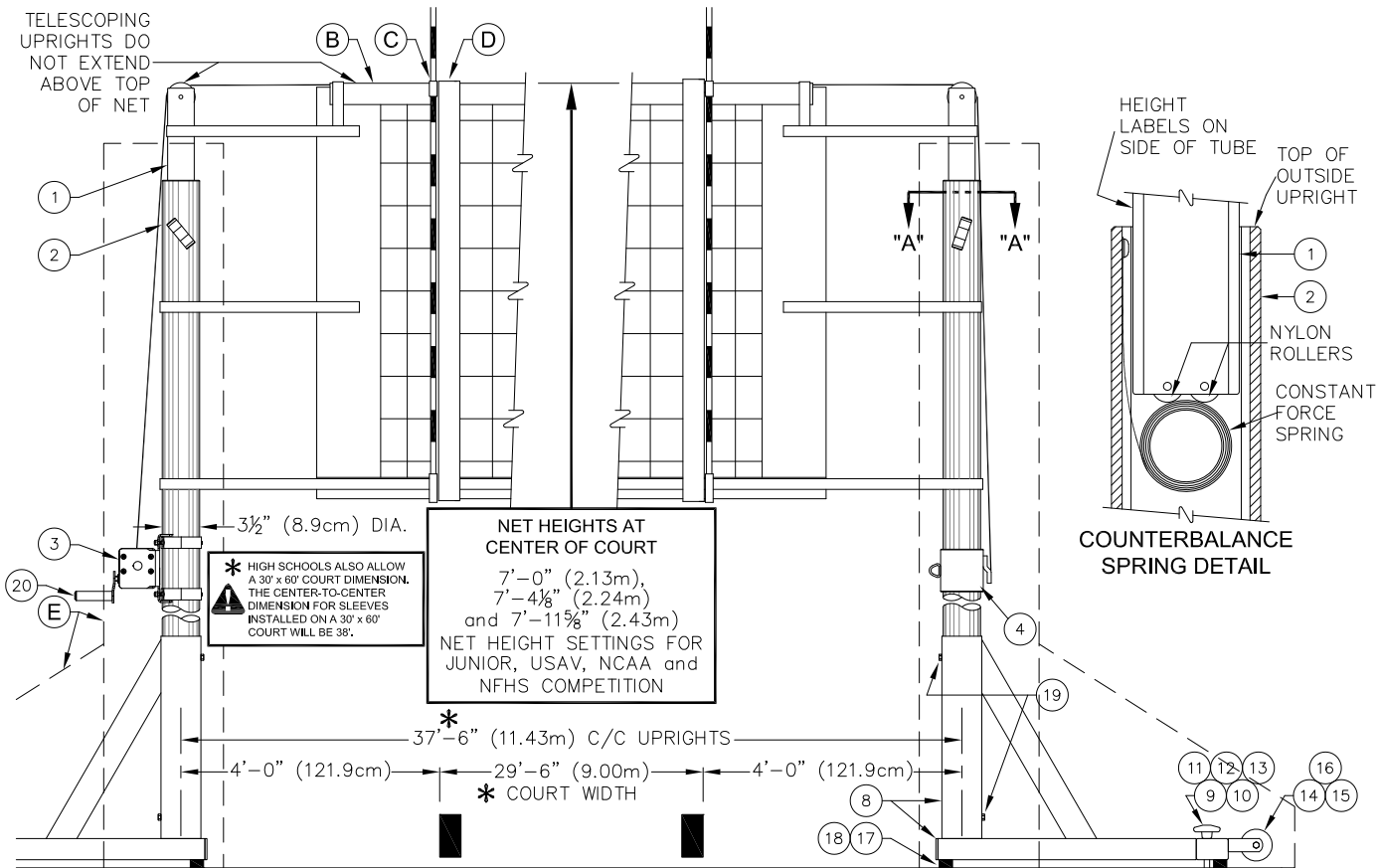
PORTER

WWW.PORTERATHLETIC.COM/FACILITY

VOLLEYBALL SPECIFICATION SHEET

V-1995

TELESCOPING
UPRIGHTS DO
NOT EXTEND
ABOVE TOP
OF NET

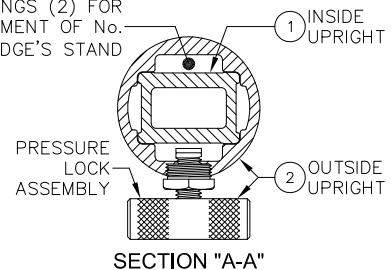


PARTS LIST - No. 1995		
No.	QTY.	DESCRIPTION
1	2	UPRT 00213 200 INSIDE UPRIGHT ASSEMBLY
2	2	UPRT 00314 000 OUTSIDE UPRIGHT ASSEMBLY
3	1	WINH 00113 POWR-SELECT WINCH
4	1	SLVE 00038 001 NET TIE-OFF
5	2	LABL 00167 000 HEIGHT LABEL - 7'-11 5/8"
6	2	LABL 00168 000 HEIGHT LABEL - 7'-4 7/8"
7	2	LABL 00169 001 HEIGHT LABEL - 7'-0"
8	2	BASE 00103 001 T-BASE
9	4	HAND 00001 000 HANDWHEEL WITH STUD
10	4	SPNG 00004 000 SPRING
11	4	HDWE 55007 000 1/2" NYLON FLATWASHER
12	4	HDWE 05005 0E0 1/2" FLATWASHER
13	4	HDWE 55008 0E0 1/2" RETAINER WASHER
14	4	CSTR 00001 000 WHEEL
15	4	HDWE 01208 0E0 3/8" x 2-1/2" Lg. BOLT
16	4	HDWE 03005 0E0 3/8" LOCKING CAP NUT
17	6	FEET 00002 000 RUBBER FOOT
18	12	HDWE 06016 000 1/4" x 3/4" Lg. CAP SCREW
19	4	HDWE 09015 000 5/16" x 3/8" Lg. SET SCREW
20	1	WINH 00114 CRANK FOR POWR-SELECT WINCH

SEE No. 1996 POWR-LINE
OR No. 1976 POWR-RIB II
FOR CENTER POST INSTALLATION

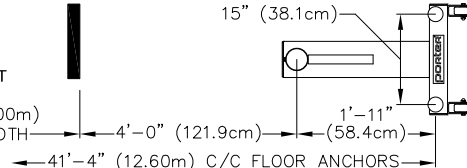
OVERALL HEIGHT OF UPRIGHT WHEN IN STORAGE
POSITION IS APPROXIMATELY 7' 1-1/8" (2.16m)

OPENINGS (2) FOR
ATTACHMENT OF No.
00999-000 JUDGE'S STAND



SECTION "A-A"

PLAN VIEW
SHOWING BASE
AND FLOOR
ANCHOR LAYOUT



- 1995 POWR-LINE PORTABLE VOLLEYBALL STANDARDS (PAIR)
- 1995XX POWR-LINE PORTABLE VOLLEYBALL STANDARDS W/ PADS (PAIR)
- 1995XXSP POWR-LINE PORTABLE VOLLEYBALL STANDARDS W/ GRAPHIC PADS (PAIR)

QTY	PART No.	DESCRIPTION	No.	PAGE No.
	VARIOUS	FLOOR ANCHORS (NOT SHOWN) SPECIFY TYPE		VARIOUS
	2295	UNIVERSAL VOLLEYBALL NET (EACH)	B	V-2295
	2297	POWR-SELECT NET ANTENNA (PAIR)	C	V-2297
	00546000	BOUNDARY MARKERS w/ ANTENNA (PAIR)	D	V-546
	8360XX	SET OF PROTECTIVE PADS (PAIR)	E	V-836
	00889100	JUDGE'S STAND (NOT SHOWN)		V-889-1
	9931XX	PADS FOR JUDGE'S STAND (NOT SHOWN)		V-993-1

PORTER®

888-277-7778 PORTER@PORTERATHLETIC.COM
© COPYRIGHT 2020 PORTER ATHLETIC - ALL RIGHTS RESERVED

PROJECT NUMBER

PROJECT NAME

02/27/2020

1995 POWR-LINE VOLLEYBALL SYSTEM

PORTABLE 3½" OD ALUMINUM VOLLEYBALL END STANDARDS

SPECIFICATIONS

PORTER No. 1995 POWR-LINE PORTABLE VOLLEYBALL STANDARDS (PAIR)

Posts shall be telescoping type with infinite height adjustment settings to meet all USAV, NCAA and NFHS requirements for competition. Posts shall be furnished with height marking labels for BOYS'/MEN'S height setting of 7' 11-5/8" (2.43m), GIRLS'/WOMEN'S height setting of 7' 4-1/8" (2.24m), and 12 YEAR AND UNDER height setting of 7'-0" (2.13m). Posts that do not telescope (that extend above the top of the net) will not be approved as equal.

Bottom upright shall be extruded of 6063T6 high strength, lightweight aluminum alloy with a special internal reinforcing rib pattern. (Non-telescoping or steel uprights will not be approved as equal.) Upright shall be 3-1/2" (8.9cm) O.D. to fit into T-Base assembly.

Bottom end of uprights shall be supported in a compact, 18-1/2" x 31-1/2" (47cm x 80cm), T-Shaped, unitized steel base assembly incorporating a 3-3/4" (9.5cm) O.D. x 19" (48.3cm) long, heavy-wall sleeve with two (2) set screws to lock upright in position. Sleeve shall be rigidly braced to T-Base with a unitized type rectangular, 2-1/2" x 1-1/2" (6.3cm x 3.8cm) steel tube type gusset member to rigidly brace entire unit. Base shall be finished in a durable, blue powder-coat finish.

Base shall be furnished with two (2), 3" (7.6cm) diameter, non-marking casters located to easily tip and roll standard to and from storage areas. Base assembly shall also be provided with two (2) spring-loaded handwheel/threaded stud (1/2-13) assemblies for anchoring into floor anchors. Specify type of floor anchor required – two (2) per base. Base shall also incorporate three (3) non-marking gray rubber floor pads.

Upper telescoping (adjustable) upright shall be extruded from the same aluminum alloy as the bottom upright with a special rectangular configuration to eliminate rotation. Upper end of telescoping upright shall be equipped with an integral 2-1/2" (6.35cm) diameter pulley to reduce cable drag and undue tension on entire system.

Upper telescoping upright shall be infinitely adjustable in height by means of a special pressure locking T-handle mechanism located on the bottom upright approximately 5'-4" (1.63m) above floor level. Telescoping upright shall be counterbalanced in a static position when adjustment lock is disengaged by means of a special, constant tension spring mechanism located inside the lower upright assembly to eliminate the possibility of accidentally falling while making height adjustments. Bottom end of telescoping upright shall be equipped with special, internally mounted nylon rollers to minimize friction and wear of constant tension spring mechanism.

Bottom upright and telescoping upright shall be finished in a durable clear anodized finish.

Tensioning reel shall be a vertical lift, worm gear winch with steel frame. Frame construction shall be of interlocking steel for high rigidity and precise alignment, semi enclosed for safety, and powder coated for corrosion resistance. Self-locking worm drive will prevent snap back or loss of tension. Net shall attach directly to the winch eliminating the need for straps.

Standards shall consist of one reel post and one end post. (For multiple court usage, specify additional No. 1996 Powr-Line or 1976 Powr-Rib II center standards as required).

WARRANTY

Volleyball system furnished with the following warranty:

Uprights – 10 year limited warranty

Winch – 1 year limited warranty

ISSUED FEBRUARY 27, 2020, SUBJECT TO CURRENT MANUFACTURING PROCEDURES AND CHANGES

COPYRIGHT 2020 - PORTER ATHLETIC - ALL RIGHTS RESERVED

PORTER@PORTERATHLETIC.COM

PORTER

WWW.PORTERATHLETIC.COM/FACILITY

VOLLEYBALL SPECIFICATION SHEET

V-1995

02/27/2020