

# 1992 POWR-LINE VOLLEYBALL SYSTEM

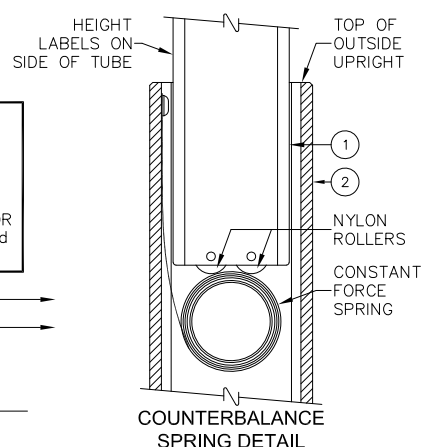
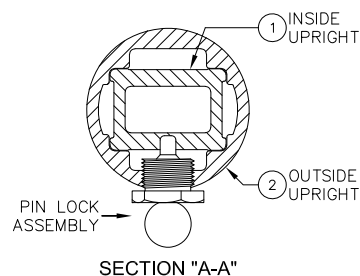
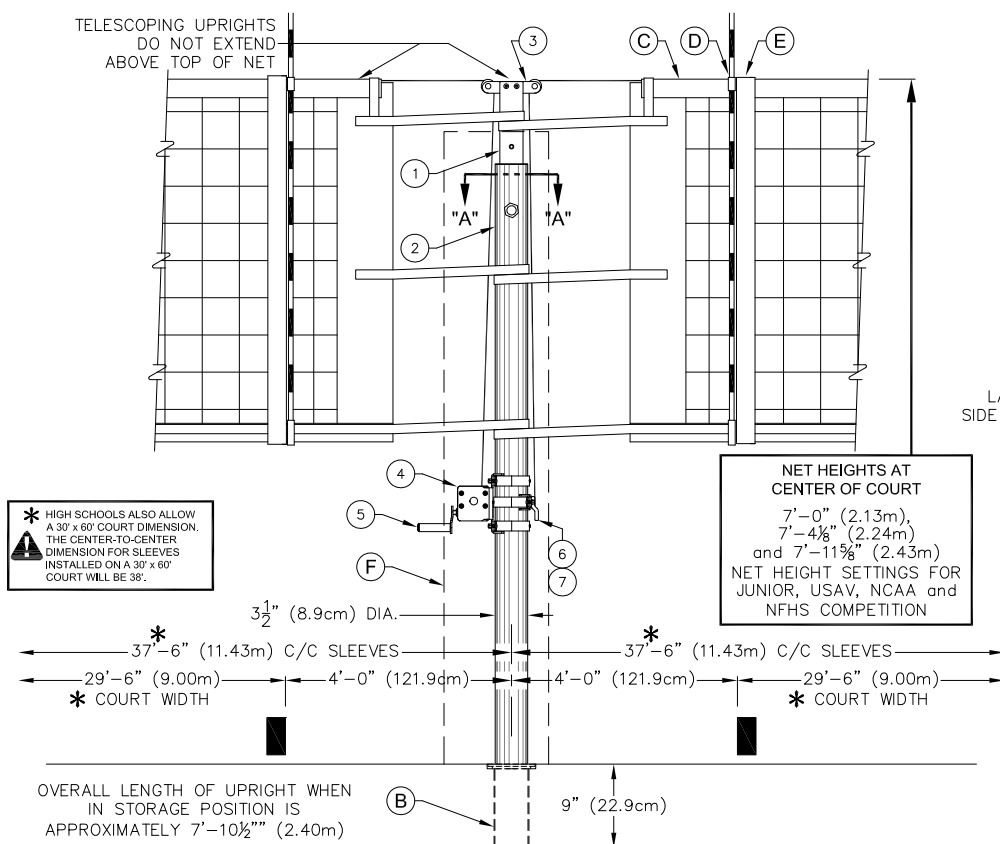
## SLEEVE-TYPE 3 1/2" OD ALUMINUM VOLLEYBALL CENTER STANDARD

PORTER

WWW.PORTERATHLETIC.COM/FACILITY

VOLLEYBALL SPECIFICATION SHEET

V-1992



PARTS LIST: 1992			
No.	QTY.	DESCRIPTION	
1	1	UPRT 00213 203	INSIDE UPRIGHT ASSEMBLY
2	1	UPRT 00212 100	OUTSIDE UPRIGHT ASSEMBLY
3	1	PULY 00062 000	PULLEY ASSEMBLY
4	1	WINH 00113	POWR-SELECT WINCH
5	1	WINH 00114	CRANK FOR POWR-SELECT WINCH
6	1	WINH 00115	CENTER STANDARD CLAMP
7	1	WINH 00116	CENTER STANDARD NET TIE-OFF
8	1	LABL 00167 000	HEIGHT LABEL: 7'-11 1/8"
9	1	LABL 00168 000	HEIGHT LABEL: 7'-4 1/8"
10	1	LABL 00169 001	HEIGHT LABEL: 7'-0"

- \_\_\_\_\_ - 1992 POWR-LINE 3 1/2" VOLLEYBALL CENTER STANDARD (EACH)
- \_\_\_\_\_ - 19929XX POWR-LINE 3 1/2" VOLLEYBALL CENTER STANDARD WITH PAD (EACH)
- \_\_\_\_\_ - 19929XXSP POWR-LINE 3 1/2" VOLLEYBALL CENTER STANDARD WITH GRAPHIC PAD (EACH)

QTY	PART No.	DESCRIPTION	No.	PAGE No.
	VARIOUS	3 1/2" DIA FLOOR SLEEVE (EACH)	B	VARIOUS
	2295	UNIVERSAL VOLLEYBALL NET (EACH)	C	V-2295
	2297	POWR-SELECT NET ANTENNA (PAIR)	D	V-2297
	00546000	BOUNDARY MARKERS w/ ANTENNA (PAIR)	E	V-546
	8391XX	UPRIGHT CENTER PROTECTIVE PAD (EACH)	F	V-839

PORTER®

888-277-7778 PORTER@PORTERATHLETIC.COM  
© COPYRIGHT 2020 PORTER ATHLETIC - ALL RIGHTS RESERVED

PROJECT NUMBER

PROJECT NAME

02/27/2020

# 1992 POWR-LINE VOLLEYBALL SYSTEM

## SLEEVE-TYPE 3 1/2" OD ALUMINUM VOLLEYBALL CENTER STANDARD

### SPECIFICATIONS

#### **PORTER No. 1992 POWR-LINE** **VOLLEYBALL CENTER STANDARD (EACH)**

Standard shall be designed for multiple court use when used in conjunction with No. 1991 Powr-Line volleyball end standards.

Post shall be telescoping type incorporating a spring-loaded pin/plunger mechanism for instant net height settings to meet all USAV, NCAA and NFHS requirements for competition. Post shall be furnished with height marking labels for BOYS'/MEN'S height setting of 7' 11-5/8" (2.43m), GIRLS'/WOMEN'S height setting of 7' 4-1/8" (2.24m), and 12 YEAR AND UNDER height setting of 7'-0" (2.13m). Posts that do not telescope (that extend above the top of the net) will not be approved as equal.

Bottom upright shall be extruded of 6063T6 high strength, lightweight aluminum alloy with a special internal reinforcing rib pattern. (Non-telescoping or steel uprights will not be approved as equal.) Upright shall be 3-1/2" (8.9cm) O.D. to fit standard floor sleeve for new construction or existing floors. Specify No. 870 or 872 type floor sleeve. Bottom of upright shall be provided with a special molded, composite foot to protect finished floors when moving standards.

Upper telescoping (adjustable) upright shall be extruded from the same aluminum alloy as the bottom upright with a special rectangular configuration to eliminate rotation. Upper end of telescoping upright shall be equipped with dual pulleys to reduce cable drag and undue tension on entire system.

Upper telescoping upright shall be adjustable in height by means of a special spring-loaded pin/plunger mechanism located on the bottom upright approximately 5'-4" (1.63m) above floor level. Pin/plunger mechanism shall locate upper telescoping upright at the three net heights of 7' 11-5/8", 7' 4-1/8" and 7'-0". Telescoping upright shall be counterbalanced in a static position when adjustment lock is disengaged by means of a special, constant tension spring mechanism located inside the lower upright assembly to eliminate the possibility of accidentally falling while making height adjustments. Bottom end of telescoping upright shall be equipped with special, internally mounted nylon rollers to minimize friction and wear of constant tension spring mechanism.

Bottom upright and telescoping upright shall be finished in a durable clear anodized finish.

Tensioning reel shall be a vertical lift, worm gear winch with steel frame. Frame construction shall be of interlocking steel for high rigidity and precise alignment, semi enclosed for safety, and powder coated for corrosion resistance. Self-locking worm drive will prevent snap back or loss of tension. Net shall attach directly to the winch eliminating the need for straps.

Weight of post shall not exceed 41 pounds.

#### WARRANTY

Volleyball system furnished with the following warranty:

Uprights – 10 year limited warranty

Winch – 1 year limited warranty

ISSUED FEBRUARY 27, 2020, SUBJECT TO CURRENT MANUFACTURING PROCEDURES AND CHANGES

COPYRIGHT 2020 - PORTER ATHLETIC - ALL RIGHTS RESERVED

PORTER@PORTERATHLETIC.COM

**PORTER**  
WWW.PORTERATHLETIC.COM/FACILITY

VOLLEYBALL SPECIFICATION SHEET

V-1992

02/27/2020