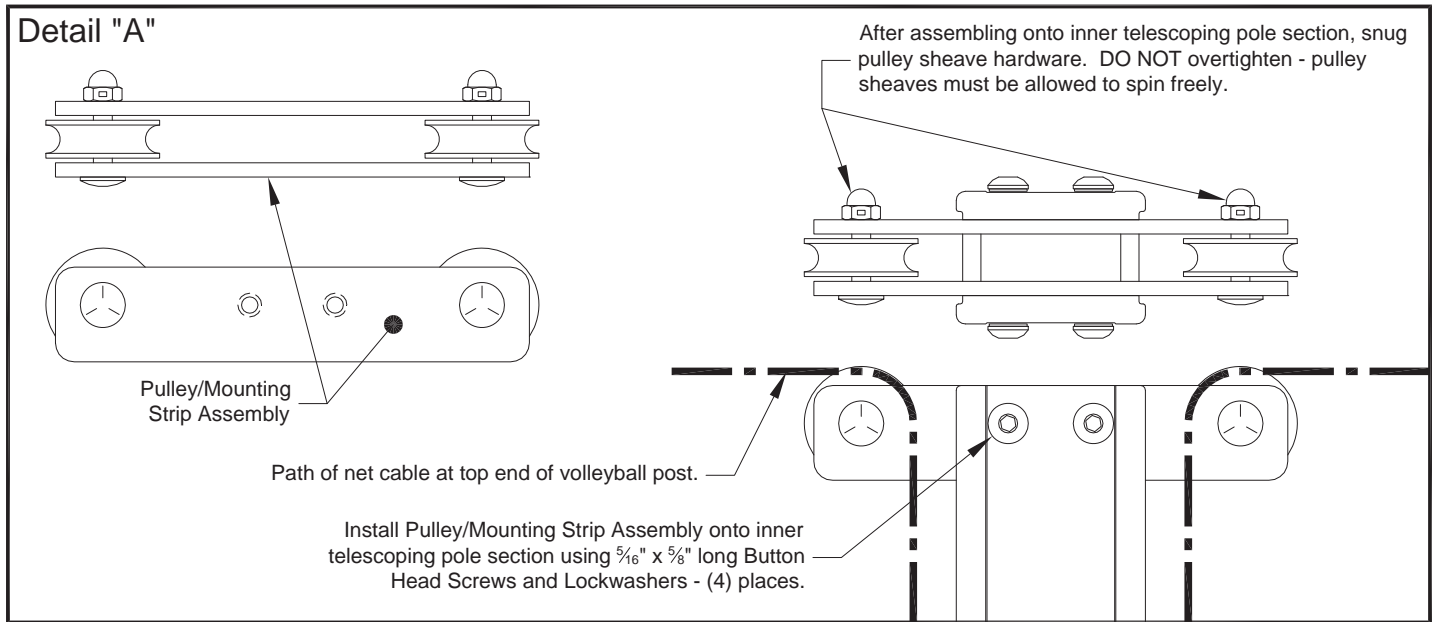




## INSTALLATION INSTRUCTIONS

### *PULLEY / MOUNTING STRIP ASSEMBLY* *No. 1992, 1994, 1996 Volleyball Center Posts*

1. The Pulley/Mounting Strip Assembly is supplied pre-assembled, but must be installed onto the inner telescoping pole section of the volleyball post, as detailed below.
2. Make sure pressure-lock assembly on volleyball post is fully tightened. Inner telescoping pole section must be secured during the installation of the Pulley/Mounting Strip Assembly.
3. Assemble Pulley/Mounting Strip Assembly to inner telescoping pole section, using four 5/16" x 5/8" long Button Head Screws and four 5/16" Internal Tooth Lock Washers. Fully tighten hardware. See Detail "A".



4. After assembling Pulley/Mounting Strip Assembly to inner telescoping pole section, snug down hardware which holds the pulley sheaves to the mounting strips – (2) places. DO NOT overtighten – pulley sheaves must be allowed to spin freely. See Detail "A".

**⚠ WARNING:** This product can expose you to Titanium Dioxide, which is known to the State of California to cause cancer. For more information go to [www.p65warnings.ca.gov](http://www.p65warnings.ca.gov).

E

SAVE THESE INSTRUCTIONS FOR FUTURE REFERENCE