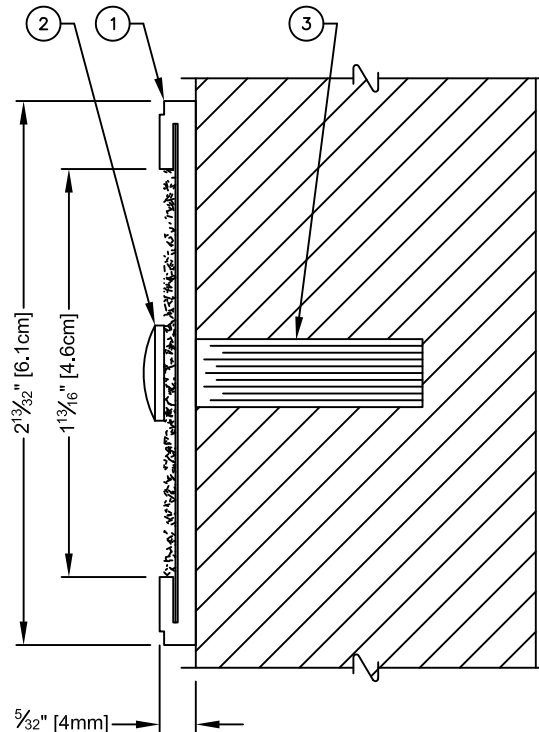


14444 - STOR-STRIP

STOR-STRIP: 4'-0"Lg. For Wall Storage of Folding Mats

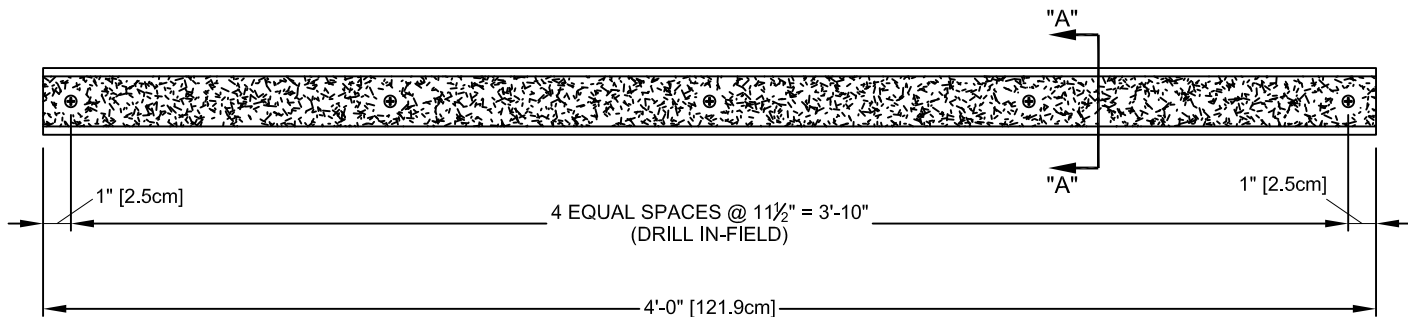
		PARTS LIST	
No.	QTY.	DESCRIPTION	
1	1	MISC 00150 000	ALUMINUM EXTRUSION With VEL-STICK
2	5	HDWE 06019 0E0	#12 x 1" Lg. PAN-HEAD SHEET METAL SCREW
3	5	HDWE 58001 000	VINYL ANCHOR



SECTION "A-A"
Detail Showing Installation
on Masonry Wall

INSTALLATION NOTES

1. Masonry anchors are supplied for mounting to walls of block, concrete, etc.
2. Locate and drill five $\frac{7}{32}$ " dia. holes thru Stor-Strip as shown.
3. Using holes in Stor-Strip as a guide, locate and drill five $\frac{17}{64}$ " dia. holes in wall for use with supplied anchors.
4. Cut Stor-Strip to length in-field as required.



No. 14444 STOR-STRIP IS USED TO SUPPORT STAGE MAT
PADDING. SPECIFY QUANTITY AS REQUIRED.

— 14444 STOR-STRIP: 4'-0" Lg. (Each)

porter[®]

888-277-7778 PORTER@PORTERATHLETIC.COM
© COPYRIGHT 2017 PORTER ATHLETIC - ALL RIGHTS RESERVED

PROJECT NUMBER

PROJECT NAME

porter

WWW.PORTERATHLETIC.COM/FACILITY

WALL PAD SPECIFICATION SHEET

G-144

8/11/2017

14444 - STOR-STRIP

STOR-STRIP: 4'-0"Lg. For Wall Storage of Folding Mats

SPECIFICATIONS

PORTER No. 14444 WALL STOR-STRIP

Stor-strip shall be designed to support Stage Mat Padding.

Strip shall consist of an extruded, anodized aluminum mounting strip with a semi-rigid Velcro, hook-type fastener strip (nap or loop pile type Velcro required on backside of stage mat padding).

Aluminum mounting strip shall be drilled in-field for mounting on wall with #12 x 1" lg. phillips pan head screws provided with stor-strip. Vinyl type anchors shall also be provided for mounting on masonry walls.

Stor-strip shall be 4'-0" in length with a total width of 2-13/32". Width of Velcro fastener to be 1-1/2". Strip may be cut to special lengths as required by installer.