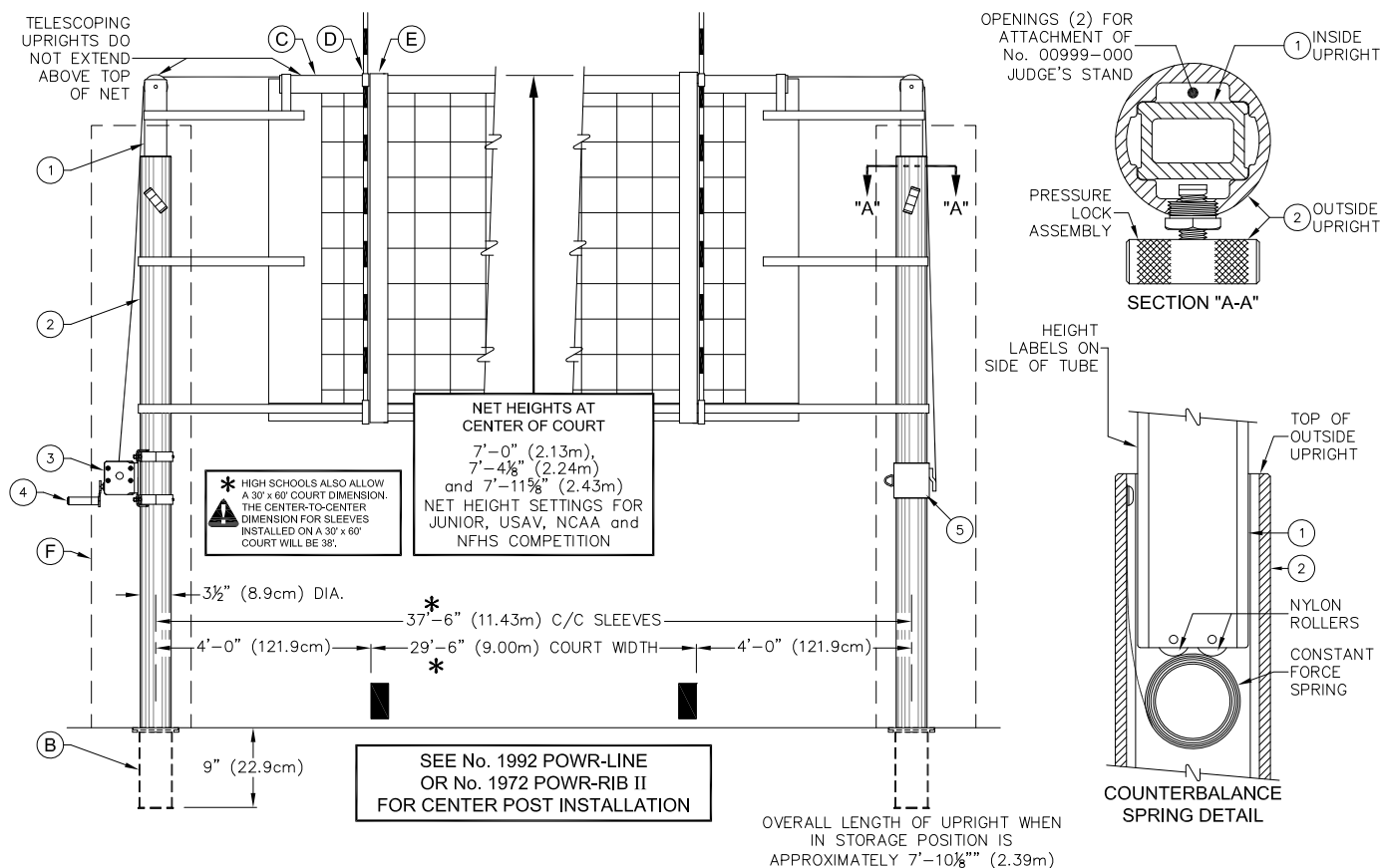


1991 POWR-LINE VOLLEYBALL SYSTEM

SLEEVE-TYPE 3 1/2" ALUMINUM VOLLEYBALL END STANDARDS



PARTS LIST - No. 1991			
No.	QTY.	DESCRIPTION	
1	2	UPRT 00213 200	INSIDE UPRIGHT ASSEMBLY
2	2	UPRT 00203 000	OUTSIDE UPRIGHT
3	1	WINH 00113	POWR-SELECT WINCH
4	1	WINH 00114	CRANK FOR POWR-SELECT WINCH
5	1	SLVE 00038 001	NET TIE-OFF
6	2	LABL 00167 000	HEIGHT LABEL - 7'-11 5/8"
7	2	LABL 00168 000	HEIGHT LABEL - 7'-4 1/8"
8	2	LABL 00169 001	HEIGHT LABEL - 7'-0"

- _____ - 1991 POWR-LINE VOLLEYBALL STANDARDS (PAIR)
- _____ - 19919XX POWR-LINE VOLLEYBALL STANDARDS WITH PADS (PAIR)
- _____ - 19919XXSP POWR-LINE VOLLEYBALL STANDARDS WITH GRAPHIC PADS (PAIR)

QTY	PART No.	DESCRIPTION	No.	PAGE No.
	VARIOUS	3 1/2" DIA FLOOR SLEEVE (EACH)	B	VARIOUS
	2295	UNIVERSAL VOLLEYBALL NET (EACH)	C	V-2295
	2297	POWR-SELECT NET ANTENNA (PAIR)	D	V-2297
	00546000	BOUNDARY MARKERS w/ ANTENNA (PAIR)	E	V-546
	8390XX	UPRIGHT PROTECTIVE PADS (PAIR)	F	V-839
	00999000	JUDGE'S STAND (NOT SHOWN)		V-999
	9931XX	PADS FOR JUDGE'S STAND (NOT SHOWN)		V-993-1

Porter[®]

888-277-7778 PORTER@PORTERATHLETIC.COM
© COPYRIGHT 2020 PORTER ATHLETIC - ALL RIGHTS RESERVED

PROJECT NUMBER _____

PROJECT NAME _____

Porter

WWW.PORTERATHLETIC.COM/FACILITY

VOLLEYBALL SPECIFICATION SHEET

V-1991

02/27/2020

1991 POWR-LINE VOLLEYBALL SYSTEM

SLEEVE-TYPE 3 1/2" ALUMINUM VOLLEYBALL END STANDARDS

SPECIFICATIONS

PORTER No. 1991 POWR-LINE VOLLEYBALL STANDARDS (PAIR)

Posts shall be telescoping type with infinite height adjustment settings to meet all USAV, NCAA and NFHS requirements for competition. Posts shall be furnished with height marking labels for BOYS'/MEN'S height setting of 7' 11-5/8" (2.43m), GIRLS'/WOMEN'S height setting of 7' 4-1/8" (2.24m), and 12 YEAR AND UNDER height setting of 7'-0" (2.13m). Posts that do not telescope (that extend above the top of the net) will not be approved as equal.

Bottom upright shall be extruded of 6063T6 high strength, lightweight aluminum alloy with a special internal reinforcing rib pattern. (Non-telescoping or steel uprights will not be approved as equal.) Upright shall be 3-1/2" (8.9cm) O.D. to fit standard floor sleeves for new construction or existing floors. Specify No. 870 or 872 type floor sleeve. Bottom of upright shall be provided with a special molded, composite foot to protect finished floors when moving standards.

Upper telescoping (adjustable) upright shall be extruded from the same aluminum alloy as the bottom upright with a special rectangular configuration to eliminate rotation. Upper end of telescoping upright shall be equipped with an integral 3" (7.62cm) diameter pulley to reduce cable drag and undue tension on entire system.

Upper telescoping upright shall be infinitely adjustable in height by means of a special pressure locking T-handle mechanism located on the bottom upright approximately 5'-4" (1.63m) above floor level. Telescoping upright shall be counterbalanced in a static position when adjustment lock is disengaged by means of a special, constant tension spring mechanism located inside the lower upright assembly to eliminate the possibility of accidentally falling while making height adjustments. Bottom end of telescoping upright shall be equipped with special, internally mounted nylon rollers to minimize friction and wear of constant tension spring mechanism.

Bottom upright and telescoping upright shall be finished in a durable clear anodized finish.

Tensioning reel shall be a vertical lift, worm gear winch with steel frame. Frame construction shall be of interlocking steel for high rigidity and precise alignment, semi enclosed for safety, and powder coated for corrosion resistance. Self-locking worm drive will prevent snap back or loss of tension. Net shall attach directly to the winch eliminating the need for straps.

Standards shall consist of one reel post and one end post. (For multiple court usage, specify additional No. 1992 Powr-Line or 1972-1 Powr-Rib II center standards as required).

Weight of each post shall not exceed 41 pounds for the reel post and 37 pounds for the end post.

WARRANTY

Volleyball system furnished with the following warranty:

Uprights – 10 year limited warranty

Winch – 1 year limited warranty

ISSUED FEBRUARY 27, 2012, SUBJECT TO CURRENT MANUFACTURING PROCEDURES AND CHANGES

COPYRIGHT 2020 - PORTER ATHLETIC - ALL RIGHTS RESERVED

PORTER@PORTERATHLETIC.COM

Porter
WWW.PORTERATHLETIC.COM/FACILITY

VOLLEYBALL SPECIFICATION SHEET

V-1991

02/27/2020