

# 00312-000 - WALL-MOUNTED BACKSTOP

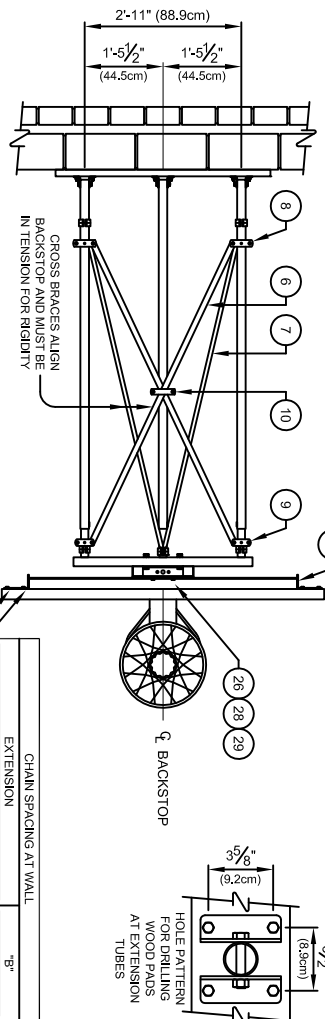
WALL-MOUNTED BACKSTOP WITH CENTER-STRUT® HEIGHT ADJUSTER  
- RECT. BACKBOARD - 3'-6 $\frac{1}{8}$ " to 10'-0" EXTENSION

PORTER  
WWW.PORTERATHLETIC.COM/FACILITY

WALL MOUNT SPECIFICATION SHEET

W-312-R10H

SUPPORT CHAINS MAY BE SECURED TO THE ROOF FRAMING STRUCTURE. SPECIFY TYPE, HEIGHT AND LOCATIONS OF FRAMING WHEN DESIRED.



EXTENSION	"B"
3'-6 $\frac{1}{8}$ " to 4'-0" (1.07m to 1.21m)	3'-6 $\frac{1}{8}$ " (1.07m)
4'-0" to 5'-0" (1.22m to 1.52m)	4'-0" (1.22m)
5'-0" to 6'-0" (1.53m to 1.83m)	4'-6" (1.37m)
6'-0" to 7'-0" (1.83m to 2.13m)	5'-0" (1.53m)
7'-0" to 8'-0" (2.14m to 2.44m)	5'-6" (1.68m)
8'-0" to 9'-0" (2.44m to 2.74m)	6'-0" (1.83m)
9'-0" to 10'-0" (2.74m to 3.05m)	6'-6" (1.98m)

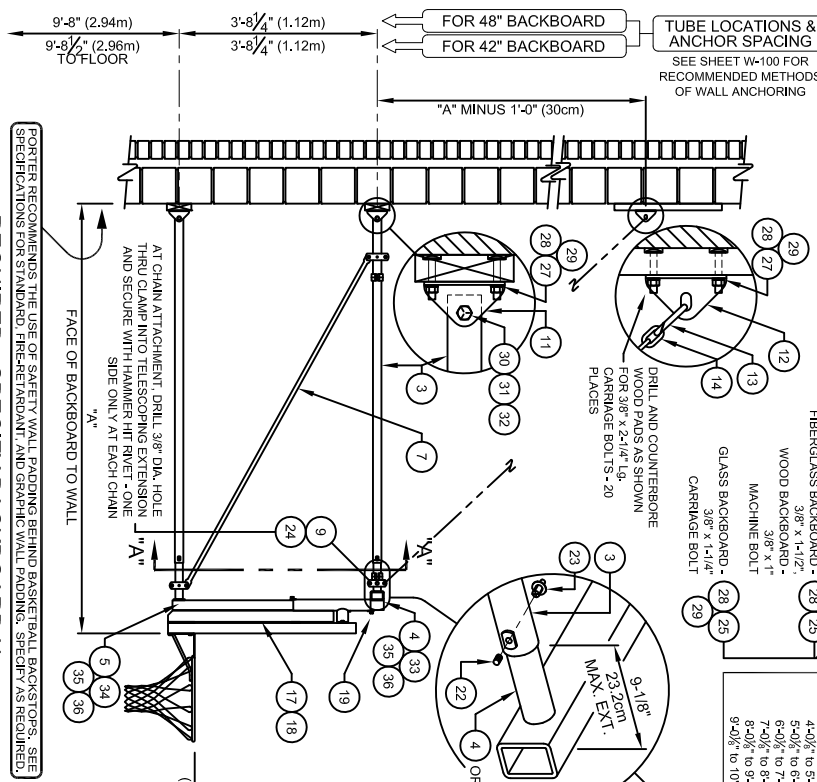
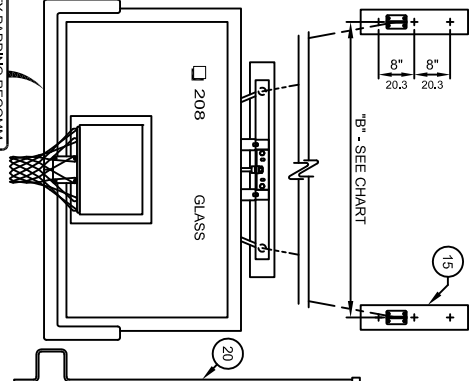
No.	QTY.	DESCRIPTION
1	1	RECT. BACKBOARD -
2	3	GOAL WITH NET AND HARDWARE
3	3	EXT. EXTENSION TUBE x
4	1	EXT. 31216 002 UPPER SPAN TUBE W/ DOWN T
5	1	EXT. 31217 002 LOWER TELESCOPING EXTENSION
6	2	BRACE PLATE x
7	2	XBRG 002
8	4	XCLP 00001 002 TUBE CLAMP ASSEMBLY 1-7/8" Lg.
9	4	XCLP 00002 002 TUBE CLAMP ASSEMBLY 1-7/8" Lg.
10	6	XKNG 21211 002 HINGE ASSEMBLY @ EXTENSION TUBES
11	6	XKNG 21212 002 HINGE ANGLE W/ SLOT @ SUPPORT CHAINS
12	2	HDVE 68025 002 REPAIR LINK
13	2	CHAM 00004 002 3/16" PROOF COIL CHAIN
14	2	XPAD 20804 008 2 x 6 WOOD PAD x 4'-0" Lg.
15	3	FRAME 00162 002 HEIGHT ADJUSTER ASSY - Manual Operation
16	1	LABEL 00235 000 HEIGHT SETTINGS LABEL
17	1	XCRK 90000 102 HT. ADJUSTER CRANK (1 per 2 units)
18	4	HDVE 01134 000 3/8" x 1/2" Lg. NYLON BOLT
19	4	XCRK 90000 102 HT. ADJUSTER CRANK (1 per 2 units)
20	1	RECT. BACKBOARD -
21	3	EXT. EXTENSION TUBE x
22	3	HDVE 08011 000 5/16" x 3/8" Lg. SET SCREW
23	3	HDVE 58125 002 3/8" x 1/2" Lg. HAMMER HIT RIVET
24	2	HDVE XXXXX 002 3/8" x 1/2" Lg. HAMMER HIT RIVET
25	2	HDVE 01244 002 3/8" x 1/2" Lg. CAP SCREW (Gd-5)
26	20	HDVE 02061 002 3/8" x 22 Lg. CARRIAGE BOLT (GRADE 5)
27	20	HDVE 03002 002 3/8" HEX NUT
28	20	HDVE 01168 002 1/2" x 22 Lg. HEX HD. CAP SCREW (G-5)
29	3	HDVE 04003 002 1/2" LOCKWASHER
30	3	HDVE 03003 002 1/2" HEX NUT
31	2	HDVE 01116 002 5/8" x 3/4" Lg. HEX HD. CAP SCREW (Gd-5)
32	2	HDVE 01116 002 5/8" x 1/2" Lg. HEX HD. CAP SCREW (Gd-5)
33	4	HDVE 01234 002 5/8" x 1/2" Lg. HEX HD. CAP SCREW (G-5)
34	2	HDVE 04000 002 5/8" LOCKWASHER
35	4	HDVE 03012 002 5/8" HEX NUT
36	4	HDVE 03012 002 5/8" HEX NUT

TELESCOPING EXTENSION TUBE  
FEATURE ALLOWS FOR PRECISE  
PLUMBING OF BACKBOARD. AFTER  
FINAL ADJUSTMENTS, DRILL 3/8" DIA.  
HOLE THRU INNER TUBE AND SECURE  
WITH HAMMER HIT RIVET.

MANUAL HEIGHT ADJUSTER SHOWN.  
SEE PAGE NO. W-2000, W-200-1,  
W-200-2 OR W-200-3 FOR DETAILS  
ON MANUAL AND ELECTRIC HEIGHT  
ADJUSTERS.

SECTION "A-A"

8'-0" to 10'-0"  
(2.44m to 3.05m)  
ADJUSTABLE



PORTER RECOMMENDS THE USE OF SAFETY WALL PADDING BEHIND BASKETBALL BACKSTOPS. SEE SPECIFICATIONS FOR STANDARD, FREESTANDING, AND GRAPHIC WALL PADDING. SPECIFY AS REQUIRED.

- REQUIRED - SPECIFY BACKBOARD NO. \_\_\_\_\_

AND GOAL NO. \_\_\_\_\_

PORTER  
888-277-7778 PORTER@PORTERATHLETIC.COM  
© COPYRIGHT 2015 PORTER ATHLETIC - ALL RIGHTS RESERVED

PROJECT NUMBER

PROJECT NAME

10/1/2015

# 00312-000 - WALL-MOUNTED BACKSTOP

WALL-MOUNTED BACKSTOP WITH CENTER-STRUT® HEIGHT ADJUSTER  
- RECT. BACKBOARD - 3'-6 $\frac{1}{8}$ " to 10'-0" EXTENSION

## SPECIFICATIONS

### PORTER No. 00312-\_\_\_ WALL BRACED BACKSTOP WITH CENTER-STRUT® HEIGHT ADJUSTMENT UNIT FOR RECTANGULAR BACKBOARD

Backstop shall be wall-braced type with face of backboard extended 3' 6-1/8" to 10'-0" from supporting wall (specify).

Extension frames shall be fabricated of three (3) 1-7/8" O.D. tubes with a telescoping end section for ease of installation, and precise plumbing and alignment of backboard with official court markings, even when supported on uneven wall conditions. Upper extensions shall terminate in a heavy wall rectangular tube assembly on standard 2'-11" centers. Extension frame assemblies shall be drilled and bolted to precision die-formed hinge angles for attachment to wall pads. Backstop shall be braced internally with 7/8" O.D. steel tension braces attached at both ends with precision die-formed clamps for rigidity and support of the Center-Strut® goal mount plate. Additional internal bracing shall consist of 3/16" x 1-1/4" steel tension flats attached at both ends with precision die-formed clamps and joined at their intersection with bolted steel fittings. Two (2) chain supports (3/16" proof coil chain) shall extend diagonally from the wall to the upper extension tubes, terminating in clamp-type fittings.

Southern yellow pine wall pads shall be provided at all wall attachment points. All edges shall be chamfered and pads shall be finished with two finish coats of natural gloss lacquer.

Height adjustment unit shall be designed to provide an adjustable, direct mount Center-Strut® goal attachment system to eliminate any strain on the backboard, should a player hang on the front mounted goal. Height adjustment units without the prescribed direct mount goal feature will not be approved as equal. Height adjustment feature will allow goal height settings from 8'-0" to the official 10'-0" for use by all age groups. Unit shall be designed for use with any official size (4' x 6' or 3'-6" x 6') Porter rectangular backboard and companion front-mount type goal.

Center unitized support frame of height adjustment unit shall be fabricated by dual, 2-3/16" square heavy wall zinc plated guide tubes located on 11-3/16" centers. Ends of guide tubes shall be welded to heavy mounting brackets. Outer dual slide tubes shall support heavy structural steel angle sections which extend downward to accept a direct mount Center-Strut® goal mounting system. Slide tube assembly shall be provided with a heavy formed steel section to attach a horizontal backboard support assembly to secure the unit to the upper two corners of the rectangular backboard on standard (5'-6") mounting centers.

Height adjustment unit shall incorporate a centrally located 3/4" diameter Acme threaded rod equipped with precision, hardened steel roller thrust bearings for ease of operation from the playing floor by means of an awning crank-type mechanism. Height adjustment system shall incorporate an internal, spring-loaded height locking mechanism to automatically lock and hold unit at any desired goal height during play. Lock mechanism automatically releases when height setting changes are made with adjustment crank assembly. Adjustment crank assembly shall be provided with each pair of height adjustment units. A height setting scale shall be located on the side of the unit to visually determine height settings from 8'-0" to 10'-0" in 3" increments.

Limited lifetime warranty on all Porter rectangular backboards when used in conjunction with Porter Center-Strut® height adjustment unit installed on a Porter No. 312 Wall-Braced Backstop.

All metal parts shall be painted one (1) coat of flat black enamel. (If special painting of colors is required, specify final painting by painting contractor.)

Specify backboard and goal as required.