

# 00312-000 - WALL-MOUNTED BACKSTOP

## CENTER-STRUT® WALL MOUNTED BACKSTOP FOR RECTANGULAR BACKBOARD 4' 0-1/8" to 10'-0" EXTENSION

**Porter**

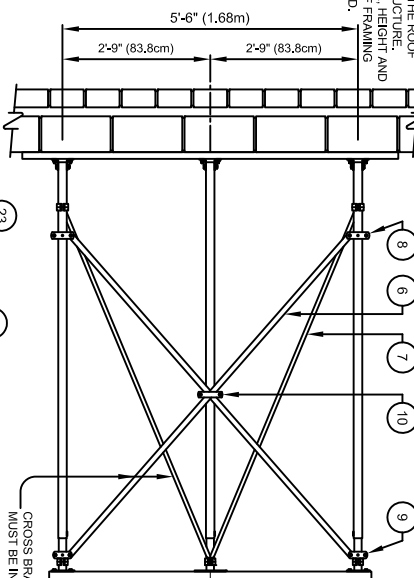
WWW.PORTERATHLETIC.COM/FACILITY

### WALL MOUNT SPECIFICATION SHEET

W-312-R10

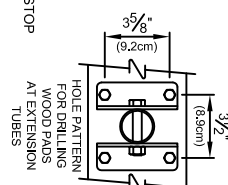
SUPPORT CHAINS MAY BE SECURED TO THE ROOF FRAMING STRUCTURE, SPECIFY TYPE, HEIGHT AND LOCATION OF FRAMING WHEN DESIGNED.

SEE SHEET W-100 FOR RECOMMENDED METHODS OF WALL ANCHORING



CROSS BRACES ALIGN BACKSTOP AND MUST BE IN TENSION FOR RIGIDITY

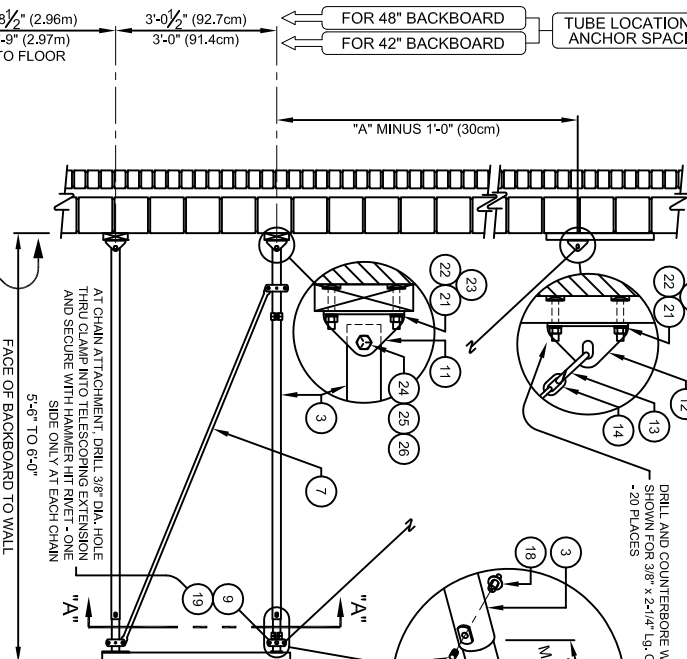
9 & 10 & 11 & 12 AS SHOWN OPPOSITE HAND



No.	QTY.	DESCRIPTION
1	1	RECT. BACKBOARD -
2	1	GOAL WITH NET AND HARDWARE
3	1	XEXT 002 EXTENSION TUBE x
4	2	XEXT 21215 002 TELESCOPING EXTENSION WEAK PLATE
5	2	XEXT 31215 002 TELESCOPING EXTENSION WIGGLY PLATE
6	2	XEXT 002 BRACE TUBE x
7	2	XEXT 002 BRACE TUBE x
8	2	XEXT 002 TUBE CLAMP ASSEMBLY: 1-1/8" LG.
9	2	XEXT 002 TUBE CLAMP ASSEMBLY: 1-1/8" LG.
10	1	XEXT 002 TUBE CLAMP ASSEMBLY: 1-1/8" LG.
11	6	XEXT 21212 002 HINGE ANGLE W/ HOLE @ EXTENSION TUBES
12	4	XEXT 21212 002 HINGE ANGLE W/ HOLE @ EXTENSION TUBES
13	2	HDVE 58023 050 REPAIR LINK
14	2	CHAN 00004 050 3/16" PROOF COIL CHAIN
15	3	XPAD 20602 008 2 x 6 WOOD PAD x 2'-0" LG.
16	1	XPAD 20607 008 2 x 6 WOOD PAD x 7'-0" LG.
17	3	HDVE 09011 000 5/16" x 3/8" LG. SET SCREW
18	3	HDVE 58125 050 3/8" x 1/2" LG. HAMMER HIT RIVET
19	2	HDVE 58137 050 3/8" x 1 1/16" LG. HAMMER HIT RIVET
20	4	HDVE XXXXX 050 3/8" x
21	20	HDVE 02057 050 3/8" x 2 1/2" LG. CARRIAGE BOLT (Grade 5)
22	24	HDVE 04002 050 3/8" LOCKWASHER
23	24	HDVE 03002 050 1/2" x 2 1/2" LG. HEX HD. CAP SCREW (GAL)
24	3	HDVE 01166 050 1/2" x 2 1/2" LG. HEX HD. CAP SCREW (GAL)
25	3	HDVE 03003 050 1/2" HEX NUT
26	3	HDVE 03003 050 1/2" HEX NUT

EXTENSION	"B"
3'-6 1/2" to 4'-0" (1.07m to 1.21m)	5'-6" (1.68m)
4'-0 1/2" to 5'-0" (1.22m to 1.52m)	6'-0" (1.83m)
5'-0 1/2" to 6'-0" (1.53m to 1.83m)	6'-6" (1.98m)
6'-0 1/2" to 7'-0" (1.83m to 2.13m)	7'-0" (2.13m)
7'-0 1/2" to 8'-0" (2.13m to 2.43m)	7'-6" (2.28m)
8'-0 1/2" to 9'-0" (2.43m to 2.73m)	8'-0" (2.43m)
9'-0 1/2" to 10'-0" (2.73m to 3.05m)	8'-6" (2.59m)

CHAIN SPACING AT WALL



FACE OF BACKBOARD TO WALL

SECTION "A-A"

BACKBOARD SAFETY PADDING RECOMMENDED FOR FACILITIES WHERE PLAYERS ARE BACKBOARD SPECIFICALLY NEEDED OR 00227-000 FOR RECTANGULAR GLASS BACKBOARDS, OR NO. 00324-072 OR 00229-000 FOR RECTANGULAR WOOD AND FIBERGLASS BACKBOARDS.

UNKNOWN TO WALL

PORTER RECOMMENDS THE USE OF SAFETY WALL PADDING BEHIND BASKETBALL BACKSTOPS. SEE SPECIFICATIONS FOR STANDARD, FIRE-RETARDANT, AND GRAPHIC WALL PADDING. SPECIFY AS REQUIRED.

REQUIRED - SPECIFY BACKBOARD NO. AND GOAL NO.

**Porter**

888-277-7778 PORTER@PORTERATHLETIC.COM  
© COPYRIGHT 2015 PORTER ATHLETIC - ALL RIGHTS RESERVED

PROJECT NUMBER

PROJECT NAME

10/1/2015

# 00312-000 - WALL-MOUNTED BACKSTOP

CENTER-STRUT® WALL MOUNTED BACKSTOP FOR  
RECTANGULAR BACKBOARD 4' 0-1/8" to 10'-0" EXTENSION

## SPECIFICATIONS

PORTER No. 00312- \_\_\_\_\_ CENTER-STRUT®  
WALL BRACED BACKSTOP FOR RECTANGULAR BACKBOARD

Backstop shall be wall-braced type with face of backboard extended 3' 6-1/8" to 10'-0" from supporting wall (specify).

Extension frames shall be fabricated of three (3) 1-7/8" O.D. tubes with a telescoping end section for ease of installation, and precise plumbing and alignment of backboard with official court markings, even when supported on uneven wall conditions. Front ends of extension frame assemblies shall terminate in heavy steel flanges for attachment to backside of backboard. Back ends of extension frame assemblies shall be drilled and bolted to precision die-formed hinge angles for attachment to wall pads. Goal shall mount directly through the backboard and into a heavy steel flange Center-Strut® at the lower extension frame to eliminate any strain on the backboard, should a player hang on the front mounted goal.

Backstop shall be braced internally with 7/8" O.D. steel tension braces attached at both ends with precision die-formed clamps for rigidity and support of the Center-Strut® goal mount plate. Additional internal bracing shall consist of 3/16" x 1-1/4" steel tension flats attached at both ends with precision die-formed clamps and joined at their intersection with bolted steel fittings. Two (2) chain supports (3/16" proof coil chain) shall extend diagonally from the wall to the upper extension tubes, terminating in clamp-type fittings.

Southern yellow pine wall pads shall be provided at all wall attachment points. All edges shall be chamfered and pads shall be finished with two finish coats of natural gloss lacquer.

All metal parts shall be painted one (1) coat of flat black enamel. (If special painting of colors is required, specify final painting by painting contractor.)

Specify backboard and goal as required.

**porter**  
WWW.PORTERATHLETIC.COM/FACILITY

WALL MOUNT SPECIFICATION SHEET

W-312-R10