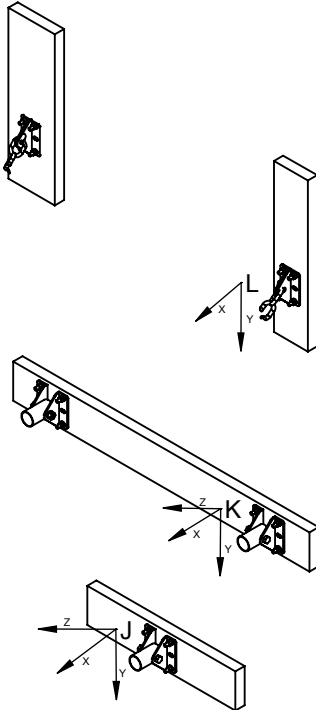


# 90312000 - LOADING AND ANCHORING

## LOADING

LOADING BASED ON 300 LB VERTICAL LOAD, 200 LB SIDE LOAD AND 200 LB HORIZONTAL LOAD AT RIM

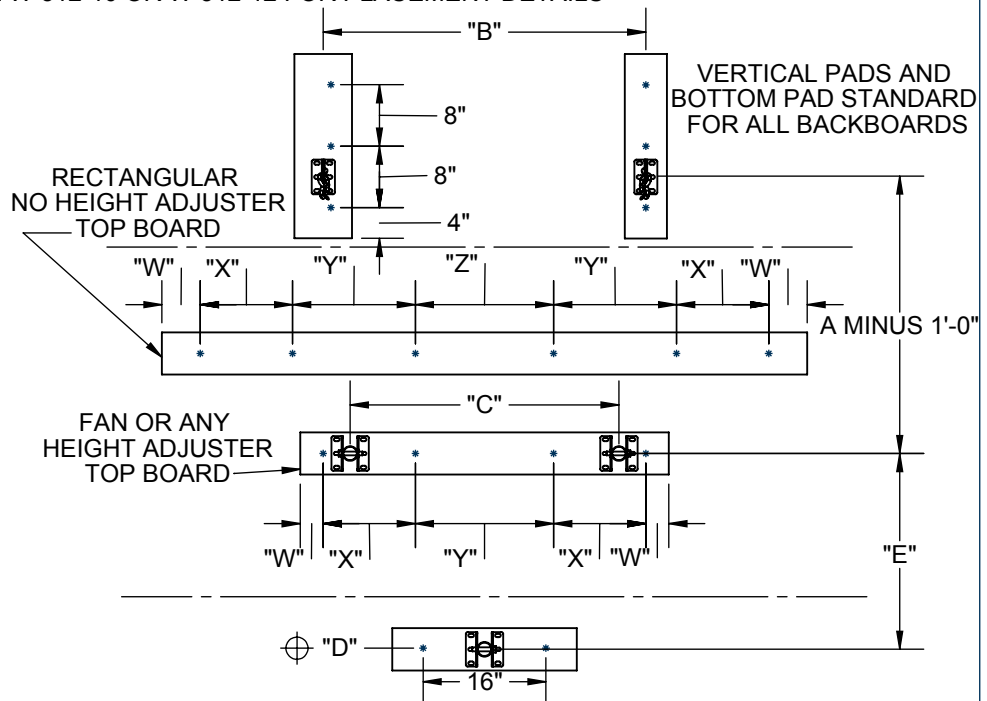


FACE OF BACKBOARD TO WALL AND BACKBOARD STYLE	J <sub>x</sub>	J <sub>y</sub>	J <sub>z</sub>	K <sub>x</sub>	K <sub>y</sub>	K <sub>z</sub>	L <sub>x</sub>	L <sub>y</sub>
UP TO 3'-0" RECTANGULAR	-974 LBS	209 LBS	183 LBS	-286 LBS	209 LBS	8 LBS	---	---
UP TO 3'-0" FAN	-1120 LBS	169 LBS	173 LBS	-572 LBS	169 LBS	14 LBS	---	---
UP TO 3'-0" WITH HEIGHT ADJUSTER	-932 LBS	247 LBS	184 LBS	-376 LBS	247 LBS	8 LBS	---	---
UP TO 6'-0" RECTANGULAR	-499 LBS	48 LBS	183 LBS	636 LBS	-151 LBS	8 LBS	404 LBS	381 LBS
UP TO 6'-0" FAN	-717 LBS	49 LBS	173 LBS	765 LBS	-138 LBS	14 LBS	333 LBS	365 LBS
UP TO 6'-0" WITH HEIGHT ADJUSTER	-720 LBS	34 LBS	184 LBS	964 LBS	-173 LBS	8 LBS	484 LBS	394 LBS
UP TO 9'-0" RECTANGULAR	-639 LBS	59 LBS	183 LBS	689 LBS	-84 KBS	8 LBS	361 LBS	329 LBS
UP TO 9'-0" FAN	-955 LBS	61 LBS	173 LBS	901 LBS	-75 LBS	14 LBS	295 LBS	320 LBS
UP TO 9'-0" WITH HEIGHT ADJUSTER	-939 LBS	47 LBS	184 LBS	1102 LBS	-99 LBS	8 LBS	438 LBS	337 LBS
UP TO 12'-0" RECTANGULAR	-829 LBS	89 LBS	183 LBS	762 LBS	-40 LBS	8 LBS	350 LBS	315 LBS
UP TO 12'-0" FAN	-1244 LBS	85 LBS	173 LBS	1055 LBS	-35 LBS	14 LBS	284 LBS	306 LBS
UP TO 12'-0" WITH HEIGHT ADJUSTER	-1188 LBS	72 LBS	184 LBS	1262 LBS	-55 LBS	8 LBS	423 LBS	318 LBS

NOTE: HEAVIEST BACKBOARD OF EACH STYLE SHOWN, SOME BACKBOARDS MAY REDUCE LOADS

## SUGGESTED ANCHORING LOCATIONS SEE W-312-10 OR W-312-12 FOR PLACEMENT DETAILS

"A" FACE OF BACKBOARD TO WALL	"B" CHAIN HANGER DISTANCE (RECTANGULAR NO HEIGHT ADJUSTER)	"B" CHAIN HANGER DISTANCE (FAN OR ANY HEIGHT ADJUSTER)
6" to 3'-6"	NO CHAIN	---
3' 6-1/8" to 4'-0"	5'-6" (1.68m)	3'-6" (1.07m)
4' 0-1/8" to 5'-0"	6'-0" (1.83m)	4'-0" (1.22m)
5' 0-1/8" to 6'-0"	6'-6" (1.98m)	4'-6" (1.37m)
6' 0-1/8" to 7'-0"	7'-0" (2.14m)	5'-0" (1.53m)
7' 0-1/8" to 8'-0"	7'-6" (2.28m)	5'-6" (1.67m)
8' 0-1/8" to 9'-0"	8'-0" (2.77m)	6'-0" (1.83m)
9' 0-1/8" to 10'-0"	8'-6" (2.59m)	6'-6" (1.98m)
10' 0-1/8" to 11'-0"	9'-6" (2.9m)	7'-6" (2.3m)
11' 0-1/8" to 12'-0"	9'-6" (2.9m)	7'-6" (2.3m)



BACKBOARD STYLE	"W"	"X"	"Y"	"Z"	"C" PIPE SUPPORT DISTANCE	"D" HINGE TO FLOOR	"E" VERTICAL PIPE SUPPORT DISTANCE
RECTANGULAR	5" (0.127m)	12" (0.30m)	16" (0.41m)	18" (0.46m)	5'-6" (1.68m)	9'-9" (2.97m)	3'-0" (0.92m)
FAN	3" (0.076m)	12" (0.30m)	---	18" (0.46m)	2'-11" (0.889m)	9'-8 1/2" (2.96m)	2'-1 1/2" (0.65m)
RECTANGULAR WITH HEIGHT ADJUSTER	3" (0.076m)	12" (0.30m)	---	18" (0.46m)	2'-11" (0.889m)	9'-8 1/2" (2.96m)	3'-8 1/4" (1.12m)
FAN WITH HEIGHT ADJUSTER	3" (0.076m)	12" (0.30m)	---	18" (0.46m)	2'-11" (0.889m)	9'-8" (2.94m)	3'-8 1/4" (1.12m)