

Porter
www.porterathletic.com/facility

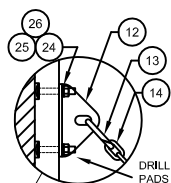
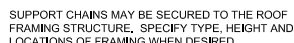
WWW.PORIERA1HLE11C.COM/FACILITY

WALL MOUNT SPECIFICATION SHEET

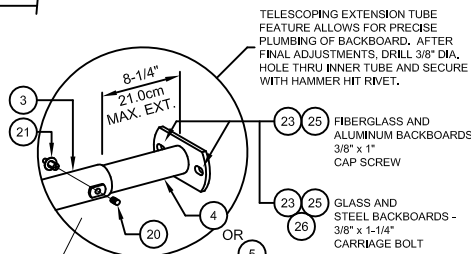
W-312-F12

4/28/2014

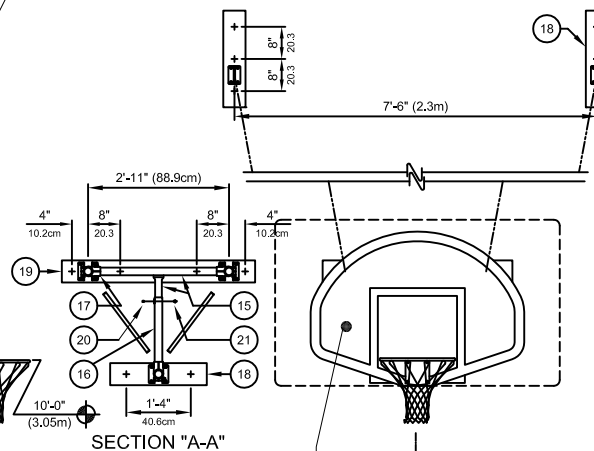
10'-0 $\frac{1}{8}$ " to 12'-0" EXTENSION



DRILL AND COUNTERBORE WOOD
PADS AS SHOWN FOR 3/8" x 2-1/4"
Lg. CARRIAGE BOLTS - 20 PLACES



TELESCOPING EXTENSION TUBE
FEATURE ALLOWS FOR PRECISE
PLUMBING OF BACKBOARD. AFTER
FINAL ADJUSTMENTS, DRILL 3/8" DIA.
HOLE THRU INNER TUBE AND SECURE
WITH HAMMER HIT RIVET.



SECTION "A-A"

<input type="checkbox"/> 00234-000	ALUMINUM
<input type="checkbox"/> 00234-300	ALUMINUM
<input type="checkbox"/> 00267-000	FIBERGLASS
<input type="checkbox"/> 00216-000	RECT. FIBERGLASS

		PARTS LIST	
No.	QTY.	DESCRIPTION	
1	1	BACKBOARD;	
2	1	GOAL WITH NET AND HARDWARE	
3	3	TEXT 002	EXTENSION TUBE x Lg.
4	2	TEXT 21215 002	TELESCOPING EXTENSION w/BAWK PLATE
5	1	TEXT 31215 002	TELESCOPING EXTENSION w/GOAL PLATE
6	4	XFLT 002	BRACE FLAT x Lg.
7	4	XBRC 002	BRACE TUBE x Lg.
8	11	XCLP 00001 002	TUBE CLAMP ASSEMBLY; 1/4"
9	5	XCLP 00005 002	TUBE CLAMP ASSEMBLY; 1/8"
10	2	XCLP 76500 002	FLAT TIE ASSEMBLY
11	6	XHNG 21111 002	HINGE ANGLE w/HOLE @ EXTENSION TUBES
12	4	XHNG 21212 002	HINGE ANGLE w/SLOT @ SUPPORT CHAINS
13	2	HDWE 58029 0E0	1/2" HEX NUT
14	2	CHAN 00004 0E0	3/16" PROOF COIL CHAIN
15	1	XCTE 00001 0E0	EXTENSION TIE WELDMENT
16	1	XCTE 31018 002	VERTICAL EXTENSION TUBE x 1'-6" Lg.
17	3	XTEE 81701 002	TIE ASSEMBLY; 1-7/8" to 1-7/8"
18	3	XPAD 20602 00B	2 x 6 WOOD PAD x 2'-0" Lg.
19	1	XPAD 20604 00B	2 x 6 WOOD PAD x 4'-0" Lg.
20	4	HDWE 09011 000	5/16" x 3/8" Lg. SET SCREW
21	4	HDWE 58125 0E0	3/8" x 1/2" Lg. HAMMER HIT RIVET
22	2	HDWE 58137 0E0	3/8" x 11/16" Lg. HAMMER HIT RIVET
23	4	HDWE 0E0	3/8" x
24	20	HDWE 02057 0E0	3/8" x 2 1/2" Lg. CARRIAGE BOLT (Grade 5)
25	24	HDWE 04002 0E0	3/8" LOCKWASHER
26	24	HDWE 03002 0E0	3/8" HEX NUT
27	23	HDWE 01168 0E0	1/2" x 2 1/2" Lg. HEX HD. CAP SCREW (Gr.5)
28	3	HDWE 04003 0E0	1/2" LOCKWASHER
29	3	HDWE 03003 0E0	1/2" HEX NUT
30	1	FITG 00222 000	SPACER KIT (No. 216 Board)

- QUANTITY REQUIRED

- BACKBOARD SELECTION

- GOAL SELECTION

The Porter logo, featuring the word "porter" in a stylized, outlined font.

888-277-7778 PORTER@PORTERATHLETIC.COM
© COPYRIGHT 2014 PORTER ATHLETIC - ALL RIGHTS RESERVED

PROJECT NUMBER

PROJECT NAME

00312-000 - WALL-MOUNTED BACKSTOP

CENTER-STRUT® WALL-MOUNTED BACKSTOP FOR FAN BACKBOARD
10'-0 $\frac{1}{8}$ " to 12'-0" EXTENSION

SPECIFICATIONS

PORTER No. 00312-___ CENTER-STRUT® WALL-BRACED BACKSTOP
FOR FAN BACKBOARD AND RECTANGULAR FIBERGLASS BACKBOARD

Backstop shall be wall-braced type with face of backboard extended 10' 0-1/8" to 12'-0" from supporting wall(specify).

Extension frames shall be fabricated of three (3) 1-7/8" O.D. tubes with a telescoping end section for ease of installation, and precise plumbing and alignment of backboard with official court markings, even when supported on uneven wall conditions. Front ends of extension frame assemblies shall terminate in heavy steel flanges for attachment to backside of backboard. Extension frame assemblies shall be drilled and bolted to precision die-formed hinge angles for attachment to wall pads. Goal shall mount directly through the backboard and into a heavy steel flange Center-Strut® at the lower extension frame to eliminate any strain on the backboard, should a player hang on the front mounted goal.

Backstop shall be braced internally with 7/8" O.D. steel tension braces attached at both ends with precision die-formed clamps for rigidity and support of the Center-Strut® goal mount plate. Additional internal bracing shall consist of 3/16" x 1-1/4" steel tension flats attached at both ends with precision die-formed clamps and joined at their intersection with bolted steel fittings. The three extension frames shall be braced mid-span by 1-7/8" O.D. tubes welded into a 'T' configuration and attached with ductile iron Tee casting assemblies. Two (2) chain supports (3/16" proof coil chain) shall extend diagonally from the wall to the upper extension tubes, terminating in clamp-type fittings.

Southern yellow pine wall pads shall be provided at all wall attachment points. All edges shall be chamfered and pads shall be finished with two finish coats of natural gloss lacquer.

All metal parts shall be painted one (1) coat of flat black enamel. (If special painting of colors is required, specify final painting by painting contractor.)

Specify backboard and goal as required.