

00312-000 - WALL-MOUNTED BACKSTOP

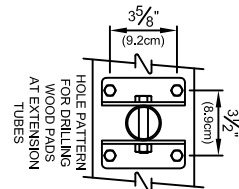
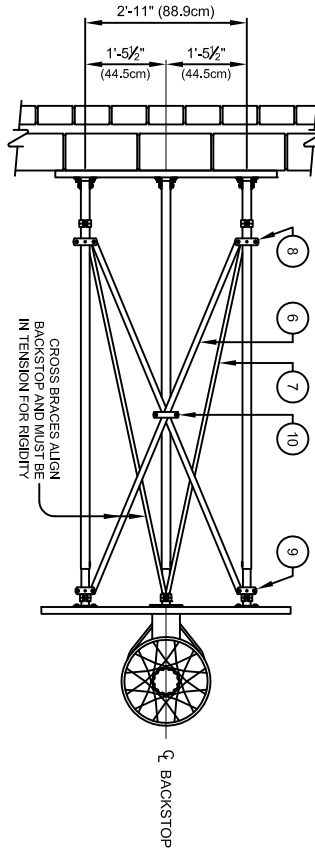
CENTER-STRUT® WALL-MOUNTED BACKSTOP FOR FAN BACKBOARD - 3'-6 1/8" to 10'-0" EXTENSION

Porter

WALL MOUNT SPECIFICATION SHEET

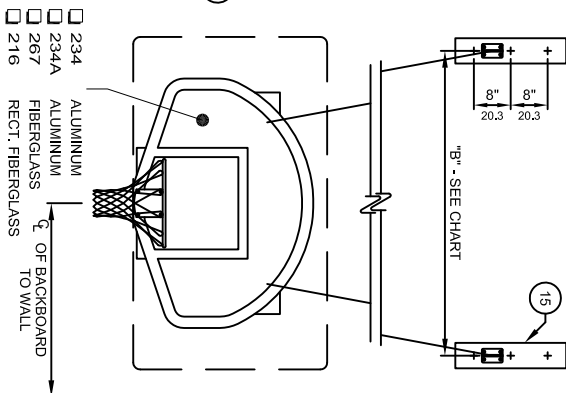
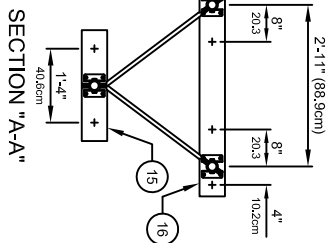
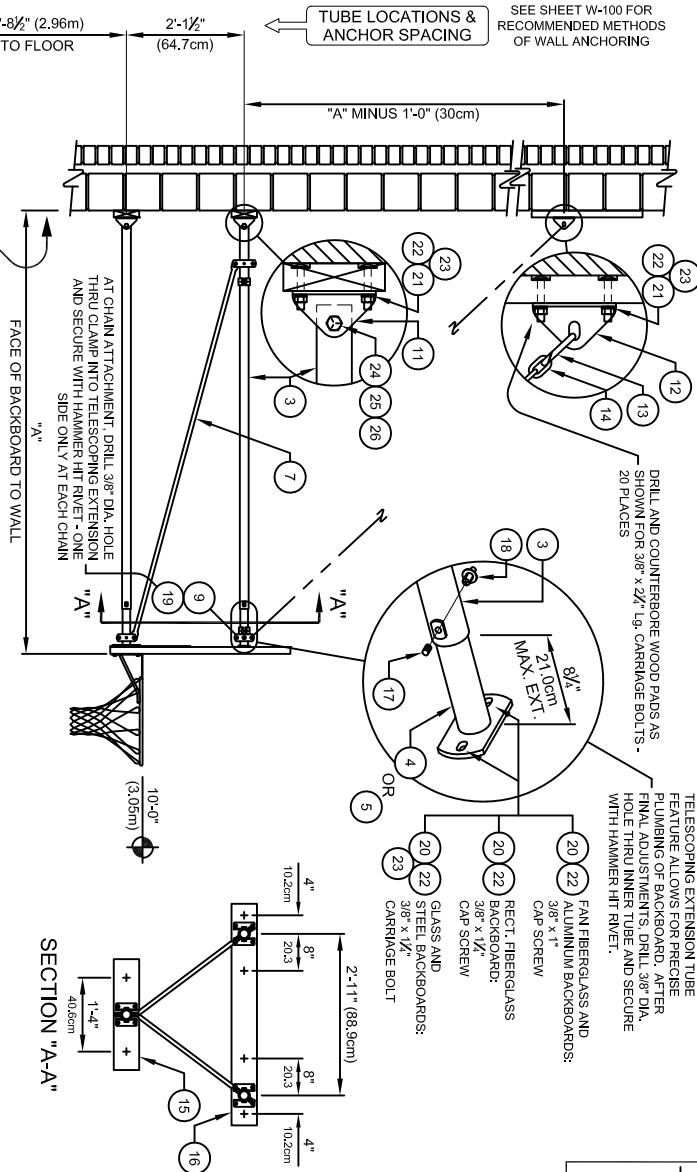
W-312-F10

SUPPORT CHAINS MAY BE SECURED TO THE ROOF FRAMING STRUCTURE. SPECIFY TYPE, HEIGHT AND LOCATIONS OF FRAMING WHEN DESIRED.



No.	QTY.	PARTS LIST
1	1	BACKBOARD:
2	1	GOAL WITH NET AND HARDWARE
3	1	EXT 002 EXTENSION TUBE x LG.
4	2	EXT 21215 002 TELESCOPING EXTENSION W/BACK PLATE
5	1	EXT 31215 002 TELESCOPING EXTENSION W/GOAL PLATE
6	2	XFLT 002 BRACE FLAT x LG.
7	2	XBRG 002 BRACE TUBE x LG.
8	4	XCLP 00001 002 TUBE CLAMP ASSEMBLY 1 1/2"
9	5	XCLP 00005 002 FLAT TUBE CLAMP ASSEMBLY 1 1/2"
10	1	XCLP 76500 002 HINGE ANGLE WHOLE @ EXTENSION TUBES
11	6	XHNG 21211 002 HINGE ANGLE WHOLE @ EXTENSION TUBES
12	4	XHNG 21212 002 HINGE ANGLE WHOLE @ SUPPORT CHAINS
13	2	HIVE 58029 0E0 REPAIR LINK
14	3	CHAN 00004 0E0 3/16\" PROOF COIL CHAIN
15	3	XPAD 20604 00E 2 x 6 WOOD PAD x 4\" LG.
16	1	HIVE 09011 000 5/16\" x 3/8\" LG. SET SCREW
17	3	HIVE 58125 0E0 3/8\" x 1 1/2\" LG. HAMMER HIT RIVET
18	3	HIVE 58137 0E0 3/8\" x 1 1/8\" LG. HAMMER HIT RIVET
19	2	HIVE 02051 0E0 3/8\" x 2 1/2\" LG. CARRIAGE BOLT (Grade 5)
20	4	HIVE 02051 0E0 3/8\" x 2 1/2\" LG. CARRIAGE BOLT (Grade 5)
21	2	HIVE 04002 0E0 3/8\" HEX NUT
22	24	HIVE 04002 0E0 3/8\" LOCKWASHER
23	3	HIVE 01068 0E0 1/2\" x 2 1/2\" LG. HEX HD. CAP SCREWS (J)
24	3	HIVE 04003 0E0 1/2\" LOCKWASHER
25	3	HIVE 03003 0E0 1/2\" HEX NUT

SEE SHEET W-100 FOR RECOMMENDED METHODS OF WALL ANCHORING



- ☐ 234 ALUMINUM
- ☐ 234A ALUMINUM
- ☐ 267 FIBERGLASS
- ☐ 216 RECT. FIBERGLASS

REQUIRED - SPECIFY BACKBOARD NO.

AND GOAL NO.

Porter

888-277-7778 PORTER@PORTERATHLETIC.COM
© COPYRIGHT 2015 PORTER ATHLETIC - ALL RIGHTS RESERVED

PROJECT NUMBER

PROJECT NAME

10/1/2015

00312-000 - WALL-MOUNTED BACKSTOP

CENTER-STRUT® WALL-MOUNTED BACKSTOP
FOR FAN BACKBOARD - 3'-6 $\frac{1}{8}$ " to 10'-0" EXTENSION

SPECIFICATIONS

PORTER No. 00222-000 PRO-PAD BACKBOARD PADDING KIT FOR OFFICIAL RECTANGULAR BACKBOARDS (EACH)

Backstop shall be wall-braced type with face of backboard extended 3' 6-1/8" to 10'-0" from supporting wall (specify).

Extension frames shall be fabricated of three (3) 1-7/8" O.D. tubes with a telescoping end section for ease of installation, and precise plumbing and alignment of backboard with official court markings, even when supported on uneven wall conditions. Front ends of extension frame assemblies shall terminate in heavy steel flanges for attachment to backside of backboard. Extension frame assemblies shall be drilled and bolted to precision die-formed hinge angles for attachment to wall pads. Goal shall mount directly through the backboard and into a heavy steel flange Center-Strut® at the lower extension frame to eliminate any strain on the backboard, should a player hang on the front mounted goal.

Backstop shall be braced internally with 7/8" O.D. steel tension braces attached at both ends with precision die-formed clamps for rigidity and support of the Center-Strut® goal mount plate. Additional internal bracing shall consist of 3/16" x 1-1/4" steel tension flats attached at both ends with precision die-formed clamps and joined at their intersection with bolted steel fittings. Two (2) chain supports (3/16" proof coil chain) shall extend diagonally from the wall to the upper extension tubes, terminating in clamp-type fittings.

Southern yellow pine wall pads shall be provided at all wall attachment points. All edges shall be chamfered and pads shall be finished with two finish coats of natural gloss lacquer.

All metal parts shall be painted one (1) coat of flat black enamel. (If special painting of colors is required, specify final painting by painting contractor.)

Specify backboard and goal as required.

porter
WWW.PORTERATHLETIC.COM/FACILITY

WALL MOUNT SPECIFICATION SHEET

W-312-F10