

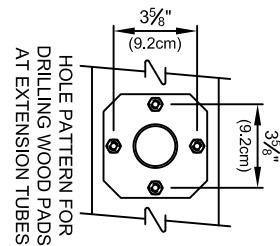
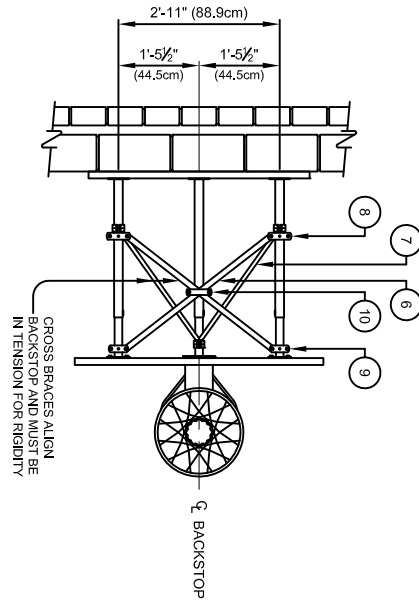
00312-000 - WALL BRACED BACKSTOP

CENTER-STRUT® WALL-MOUNTED BACKSTOP FOR FAN BACKBOARD 2'-0" to 3'-6" EXTENSION

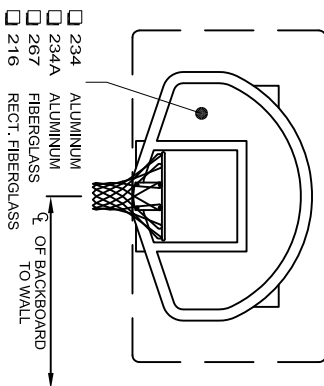
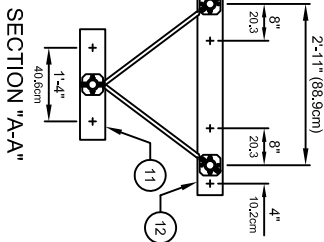
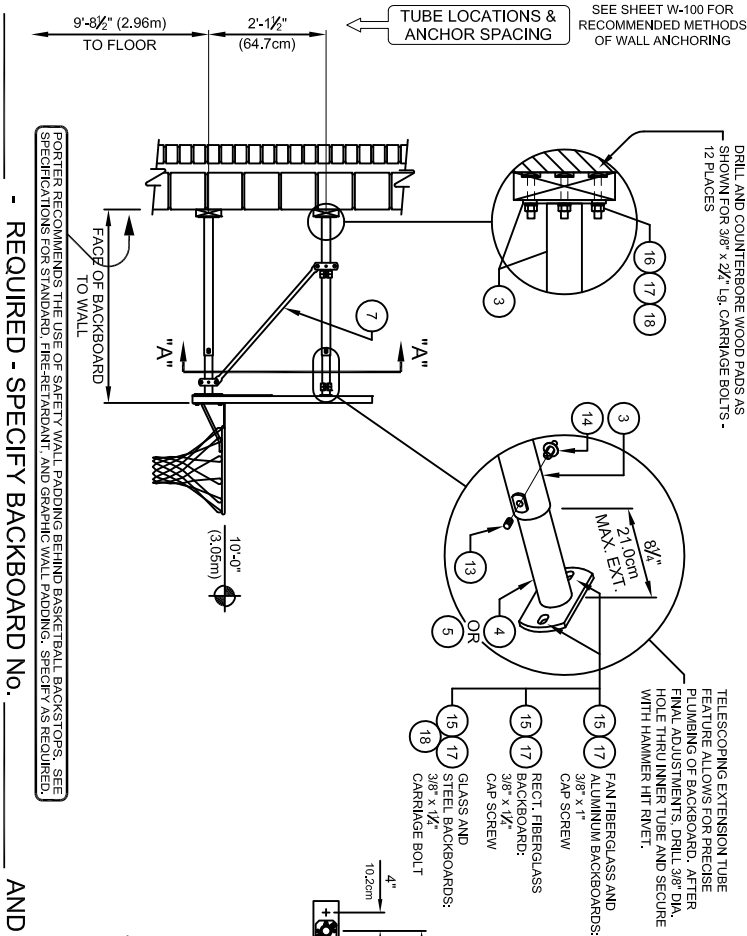
PORTER
WWW.PORTERATHLETIC.COM/FACILITY

WALL MOUNT SPECIFICATION SHEET

W-312-F03



PARTS LIST	
No.	QTY.
DESCRIPTION	
1	1
BACKBOARD:	
2	1
GOAL WITH NET AND HARDWARE	
3	1
EXTENSION TUBE w/ PLATE x	
4	2
TELESCOPING EXTENSION w/ BANK PLATE	
5	1
TELESCOPING EXTENSION w/ GOAL PLATE	
6	2
BRACE FLAT x	
7	2
BRACE TUBE x	
8	4
TUBE CLAMP ASSEMBLY: 1 1/2"	
9	3
TUBE CLAMP ASSEMBLY: 1 1/2"	
10	1
FLAT TIE ASSEMBLY	
11	1
XPAD 20602 00B 2 x 6 WOOD PAD x 2'0" Lg.	
12	1
XPAD 20604 00B 2 x 6 WOOD PAD x 4'0" Lg.	
13	3
HDWE 09011 000 5/16" x 3/8" Lg. SET SCREW	
14	3
HDWE 58125 0E0 3/8" x 1/2" Lg. HAMMER HIT RIVET	
15	4
HDWE XXXXX 0E0 3/8" x	
16	12
HDWE 02057 0E0 3/8" x 2 1/4" Lg. CARRIAGE BOLT (Grade 5)	
17	16
HDWE 04002 0E0 3/8" LOCKWASHER	
18	16
HDWE 03002 0E0 3/8" HEX NUT	



- 234 ALUMINUM
234A ALUMINUM
267 FIBERGLASS
216 RECT. FIBERGLASS

REQUIRED - SPECIFY BACKBOARD NO. _____

AND GOAL NO. _____

PORTER®

888-277-7778 PORTER@PORTERATHLETIC.COM
© COPYRIGHT 2015 PORTER ATHLETIC - ALL RIGHTS RESERVED

PROJECT NUMBER _____

PROJECT NAME _____

10/1/2015

00312-XXX - WALL BRACED BACKSTOP

CENTER-STRUT® WALL-MOUNTED BACKSTOP FOR FAN BACKBOARD
2'-0" to 3'-6" EXTENSION

SPECIFICATIONS

PORTER No. 00312-_____ CENTER-STRUT®
WALL BRACED BACKSTOP FOR FAN BACKBOARD

Backstop shall be wall-braced type with face of backboard extended 2'-0" to 3'-6" from supporting wall (specify).

Extension frames shall be fabricated of three (3) 1-7/8" O.D. tubes with a telescoping end section for ease of installation, and precise plumbing and alignment of backboard with official court markings, even when supported on uneven wall conditions. Front ends of extension frame assemblies shall terminate in heavy steel flanges for attachment to backside of backboard. Back ends of extension frame assemblies shall terminate in heavy steel flanges for attachment to wall pads. Goal shall mount directly through the backboard and into a heavy steel flange Center-Strut® at the lower extension frame to eliminate any strain on the backboard, should a player hang on the front mounted goal.

Backstop shall be braced internally with 7/8" O.D. steel tension braces attached at both ends with precision die-formed clamps for rigidity and support of the Center-Strut® goal mount plate. Additional internal bracing shall consist of 3/16" x 1-1/4" steel tension flats attached at both ends with precision die-formed clamps and joined at their intersection with bolted steel fittings.

Southern yellow pine wall pads shall be provided at all wall attachment points. All edges shall be chamfered and pads shall be finished with two finish coats of natural gloss lacquer.

All metal parts shall be painted one (1) coat of flat black enamel. (If special painting of colors is required, specify final painting by painting contractor.)

Specify backboard and goal as required.

porter
WWW.PORTERATHLETIC.COM/FACILITY

WALL MOUNT SPECIFICATION SHEET

W-312-F03