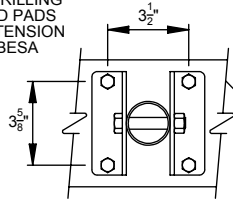


90312000 - STATIONARY BACKSTOP

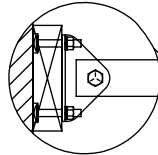
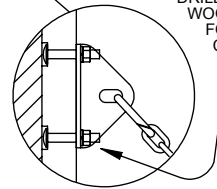
WALL MOUNTED, CENTER-STRUT UNIT
10' TO 12' FACE OF BACKBOARD TO WALL

HOLE PATTERN
FOR DRILLING
WOOD PADS
AT EXTENSION
TUBESA

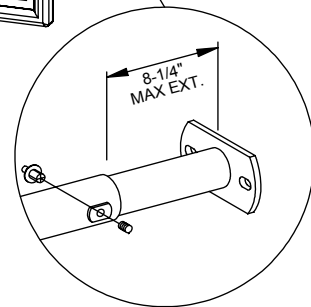
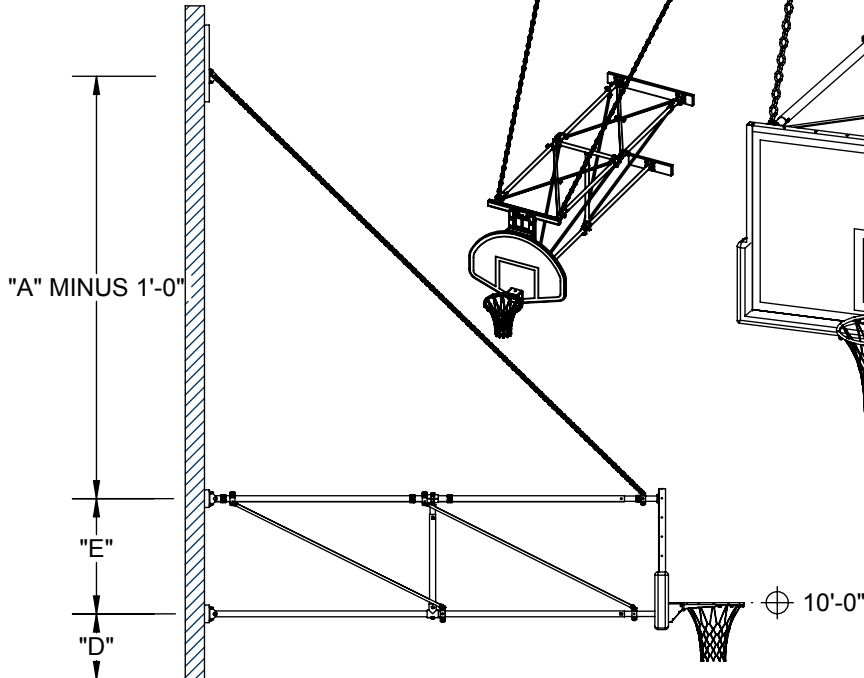


BACKBOARD STYLE (SEE B-200)	"B" CHAIN HANGER DISTANCE	"C" PIPE SUPPORT DISTANCE	"D" HINGE TO FLOOR	"E" VERTICAL PIPE SUPPORT DISTANCE
RECTANGULAR	9'-6" (2.9m)	5'-6" (1.68m)	9'-9" (2.97m)	3'-0" (0.92m)
FAN	7'-6" (2.3m)	2'-11" (0.889m)	9'-8 1/2" (2.96m)	2'-1 1/2" (64.7m)
RECTANGULAR WITH HEIGHT ADJUSTER	7'-6" (2.3m)	2'-11" (0.889m)	9'-8 1/2" (2.96m)	3'-8 1/4" (1.12m)
FAN WITH HEIGHT ADJUSTER	7'-6" (2.3m)	2'-11" (0.889m)	9'-8" (2.94m)	3'-8 1/4" (1.12m)

DRILL AND COUNTERBORE
WOOD PADS AS SHOWN
FOR 3/8" x 2-1/4" LG.
CARRIAGE BOLTS



FAN WITH HEIGHT ADJUSTER
SHOWN FOR COMPARISON



TELESCOPING EXTENSION TUBE
FEATURE ALLOWS FOR PRECISE
PLUMBING OF BACKBOARD. AFTER
FINAL ADJUSTMENTS, DRILL 3/8"
Ø HOLE THRU INNER TUBE AND
SECURE WITH HAMMER HIT RIVET.

- 90312000 WALL MOUNTED, CENTER-STRUT UNIT
- FACE OF BACKBOARD TO WALL ("A")
- BACKBOARD SELECTION
- GOAL SELECTION
- PADDING SELECTION

90312000 - STATIONARY BACKSTOP

WALL MOUNTED, CENTER-STRUT UNIT
10' TO 12' FACE OF BACKBOARD TO WALL

SPECIFICATIONS

Backstop shall be wall-braced type with face of backboard extended 3' 6-1/8" to 10'-0" from supporting wall

Extension frames shall be fabricated of three (3) 1-7/8" O.D. tubes with a telescoping end section for ease of installation, and precise plumbing and alignment of backboard with official court markings, even when supported on uneven wall conditions. Front ends of extension frame assemblies shall terminate in heavy steel flanges for attachment to backside of backboard. Back ends of extension frame assemblies shall be drilled and bolted to precision die-formed hinge angles for attachment to wall pads. Goal shall mount directly through the backboard and into a heavy steel flange Center-Strut® at the lower extension frame to eliminate any strain on the backboard, should a player hang on the front mounted goal.

Backstop shall be braced internally with 7/8" O.D. steel tension braces attached at both ends with precision die-formed clamps for rigidity and support of the Center-Strut® goal mount plate. Additional internal bracing shall consist of 3/16" x 1-1/4" steel tension flats attached at both ends with precision die-formed clamps and joined at their intersection with bolted steel fittings. Two (2) chain supports (3/16" proof coil chain) shall extend diagonally from the wall to the upper extension tubes, terminating in clamp-type fittings.

Southern yellow pine wall pads shall be provided at all wall attachment points. All edges shall be chamfered and pads shall be finished with two finish coats of natural gloss lacquer. Wood pads help distribute loads to walls. Some walls may not require wood pads.

All metal parts shall be powder coated. See swatch card SMPL00048024 for standard color options. (contact Porter for custom color requests)

Backstop provided with specified backboard and goal (see B-200 for options).

WARRANTY

- Wall mounted backstop structure comes with a 10 year limited warranty.
- Other components may be covered by their own warranty (see corresponding specifications for more details).

OPTIONAL ITEMS (SEE SPECIFICATION SHEETS FOR DETAIL)

- Height Adjuster (8' to 10' adjustable goal height) (see chart below)

CENTER-STRUT® HEIGHT ADJUSTER

- | | |
|---|---|
| • For Manual Operation, See Page No.: | B-900-506 (Rectangular Boards) B-900-211 (Fan Boards) |
| • For Key Switch Operation, See Page No.: | B-901-506 (Rectangular Boards) B-901-211 (Fan Boards) |
| • For Powr-Stick Operation, See Page No.: | B-902-506 (Rectangular Boards) B-902-211 (Fan Boards) |
| • For Sportsonic® II Operation, See Page No.: | B-903-506 (Rectangular Boards) B-903-211 (Fan Boards) |
| • For Powr-Touch Operation, See Page No. | B-904-506 (Rectangular Boards) B-904-211 (Fan Boards) |

LEED® SUBMITTAL INFORMATION

Credit	Measure
MRc4-Recycled Content	Post Consumer Average 15.0% Post Industrial 0%
MRc5-Regional Materials	Raw materials originate from multiple sources so origin point cannot be determined. Final Manufacturing/Assembly in Champaign, IL 61822