

00220-000 - SIDE FOLD BACKSTOP

WALL-MOUNTED SIDE-FOLD BACKSTOP WITH CENTER-STRUT® HEIGHT ADJ.
RECT. BACKBOARD - 4'-0" to 10'-0" EXTENSION

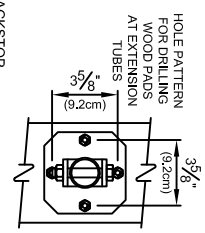
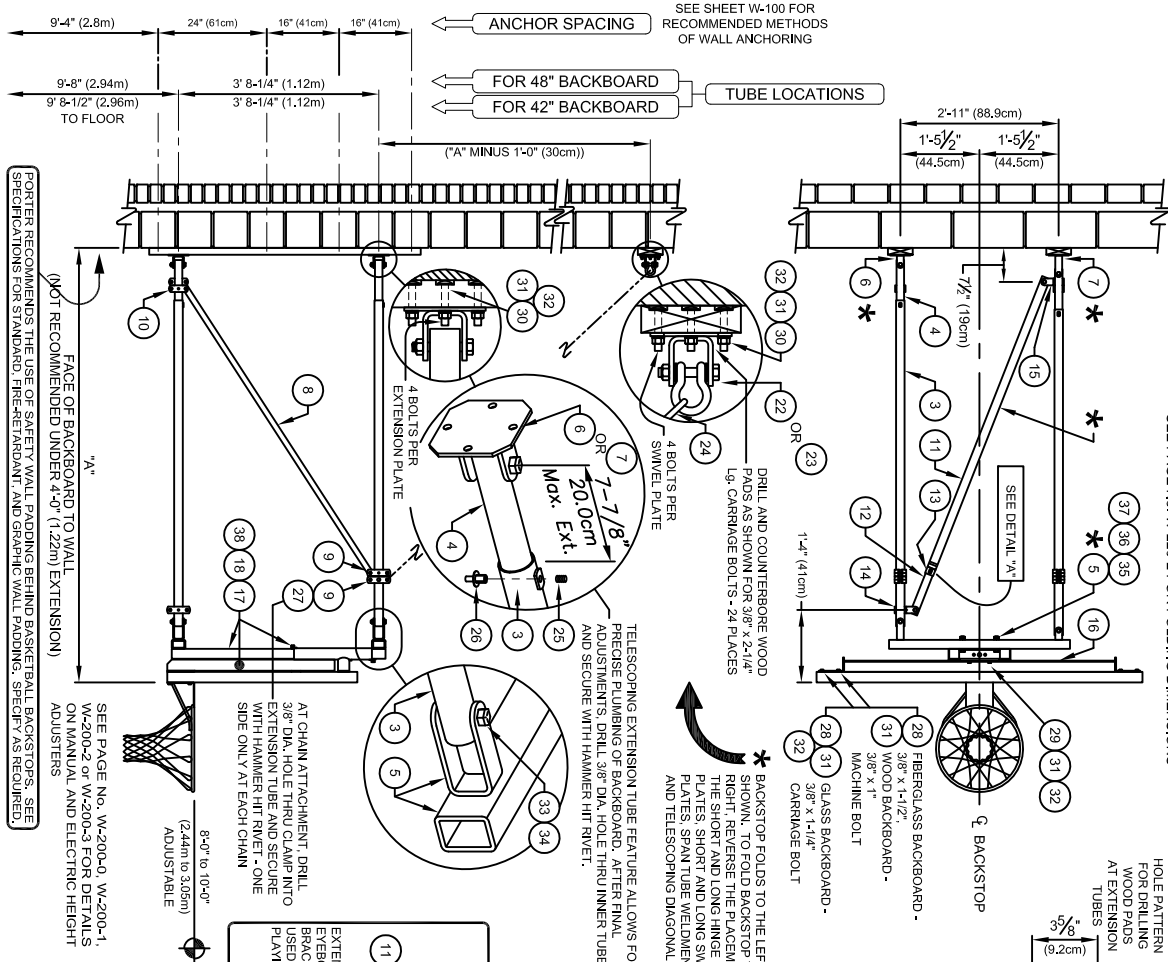
Porter

WWW.PORTERATHLETIC.COM/FACILITY

BASKETBALL SPECIFICATION SHEET

W-220-R10H

SEE PAGE NO. W-220-2 FOR FOLDING DIMENSIONS



No.	QTY.	DESCRIPTION
1	1	RECT. BACKBOARD -
2	1	GOAL WITH NET AND HARDWARE
3	4	EXT. 002 OUTER EXTENSION TUBE - LG.
4	4	TUBR 004 10 002 INNER TELESCOPING EXTENSION TUBE
5	2	EXT 22002 002 SPAN TUBE WELDMENT
6	2	XHNG 21202 002 HINGE PLATE ASSEMBLY - SHORT
7	2	XHNG 21202 002 HINGE PLATE ASSEMBLY - LONG
8	4	XCLP 00001 002 BRACE FLAT x 1-7/8"
9	4	XCLP 00001 002 TUBE CLAMP ASSEMBLY - 1-7/8"
10	2	XCLP 00005 002 TUBE CLAMP ASSEMBLY - 1-5/8"
11	1	XBRG 002 OUTER BRACE TUBE x 1-5/8"
12	1	XBRG 002 INNER BRACE TUBE x 1-5/8"
13	1	XBRG 22999 002 STOP COLLAR
14	1	XHNG 1010P 002 PARALLEL HANGER - 1-7/8" to 1-7/8"
15	1	XHNG 0510P 002 PARALLEL HANGER - 1-5/8" to 1-7/8"
16	1	EXT 91612 002 BACKBOARD EXTENSION
17	1	EXT 00162 002 HEIGHT ADJUSTER ASST - Manual Operation
18	1	EXT 00162 002 HEIGHT ADJUSTER ASST - Manual Operation
19	1	YPOD 20605 002 2 X 8 WOOD PAD x 5-7/8" x 1-5/8"
20	2	YPOD 20605 002 2 X 8 WOOD PAD x 5-7/8" x 1-5/8"
21	2	CHRN 00004 002 3/16" PROOF COIL CHAIN
22	1	XHNG 22002 002 SWIVEL PLATE ASSEMBLY - SHORT
23	1	XHNG 22002 002 SWIVEL PLATE ASSEMBLY - LONG
24	2	HDWE 58029 002 REPAIR LINK
25	2	HDWE 09011 000 5/16" x 3/8" LG. SET SCREW
26	5	HDWE 58125 000 5/16" x 1/2" LG. HAMMER HIT RIVET
27	2	HDWE 58137 000 3/8" x 1 1/16" LG. HAMMER HIT RIVET
28	4	HDWE 01024 0P0 3/8" x 1 1/2" LG. HEX HD. CAP SC. (G.5)
29	2	HDWE 02057 0P0 3/8" x 2 1/2" LG. CARRIAGE BOLT (G.5)
30	24	HDWE 04002 0E0 3/8" LOCKWASHER
31	30	HDWE 03002 0E0 3/8" HEX NUT
32	30	HDWE 01140 0P0 1 1/2" x 3/4" LG. HEX HD. CAP SC. (G.5)
33	4	HDWE 03073 0E0 1 1/2" CONE LOCK NUT
34	4	HDWE 01116 0P0 5/8" x 3 1/4" LG. HEX HD. CAP SC. (G.5)
35	4	HDWE 04006 0E0 5/8" LOCKWASHER
36	4	HDWE 03012 0E0 5/8" HEX NUT
37	4	HDWE 01134 000 3/8" x 1 1/2" LG. NTCON BOLT
38	4	XKRN 93100 102 HT. ADJUSTER CRANK (1 per 2 units)
39	4	XKRN 93100 302 BRACE CRANK (1 per 2 units)
40	1	

PROJECT NUMBER

PROJECT NAME

5/19/2014

00220-000 - SIDE FOLD BACKSTOP

WALL-MOUNTED SIDE-FOLD BACKSTOP WITH CENTER-STRUT® HEIGHT ADJ.
RECT. BACKBOARD - 4'-0" to 10'-0" EXTENSION

SPECIFICATIONS

PORTER No. 00220- WALL-MOUNTED SIDE-FOLD BACKSTOP WITH CENTER-STRUT® HEIGHT ADJUSTMENT UNIT FOR RECTANGULAR BACKBOARD

Backstop shall be wall-mounted side-fold type with face of backboard extended 4'-0" to 10'-0" from supporting wall. Specify extension.

Extension frames shall be fabricated of four (4) 1-7/8" O.D. tubes with a telescoping end section for ease of installation, and precise plumbing and alignment of backboard with official court markings, even when supported on uneven wall conditions. Ends of telescoping extension frame assemblies shall be drilled and bolted to hinge plate assemblies (short and long) for attachment to the backside of the backboard and to the wall pads. The hinge plate assemblies shall be offset-type, to allow backstop to be folded to a position nearly flat against the wall. The direction of fold is determined at the time of installation by placement of the hinge plate assemblies.

Backstop shall be vertically braced with two (2) 3/16" x 1-1/4" steel tension flats attached at both ends with precision die-formed clamps. Two (2) chain supports (3/16" proof coil chain) shall extend diagonally from the wall to the upper extension tubes, terminating in clamp-type fittings.

Backstop shall be locked into the playing and storage positions by means of a 1-7/8" O.D. telescoping tube assembly, running diagonally across the lower extension tubes. An extension crank shall be provided (one for every two backstops) to operate telescoping brace from the floor. Crank engages eyebolt on telescoping brace to lock it in position. Crank is also used to pull backstop to playing or storage positions.

Southern yellow pine wall pads shall be provided at all wall attachment points. All edges shall be chamfered and pads shall be finished with two finish coats of natural gloss lacquer.

Height adjustment unit shall be designed to provide an adjustable, direct mount Center-Strut® goal attachment system to eliminate any strain on the backboard, should a player hang on the front mounted goal. Height adjustment units without the prescribed direct mount goal feature will not be approved as equal. Height adjustment feature will allow goal height settings from 8'-0" to the official 10'-0" for use by all age groups. Unit shall be designed for use with any official size (4' x 6' or 3'-6" x 6') Porter rectangular backboard and companion front-mount type goal.

Center unitized support frame of height adjustment unit shall be fabricated by dual, 2-3/16" square heavy wall zinc plated guide tubes located on 11-3/16" centers. Ends of guide tubes shall be welded to heavy mounting brackets. Outer dual slide tubes shall support heavy structural steel angle sections which extend downward to accept a direct mount Center-Strut® goal mounting system. Slide tube assembly shall be provided with a heavy, formed steel section to attach a horizontal backboard support assembly to secure the unit to the upper two corners of the rectangular backboard on standard (5'-6") mounting centers.

Height adjustment unit shall incorporate a centrally located 3/4" diameter Acme threaded rod equipped with precision, hardened steel roller thrust bearings for ease of operation from the playing floor by means of an awning crank-type mechanism. Height adjustment system shall incorporate an internal, spring-loaded height locking mechanism to automatically lock and hold unit at any desired goal height during play. Lock mechanism automatically releases when height setting changes are made with adjustment crank assembly. Adjustment crank assembly shall be provided with each pair of height adjustment units. A height setting scale shall be located on the side of the unit to visually determine height settings from 8'-0" to 10'-0" in 3" increments.

Limited lifetime warranty on Porter rectangular backboards when used in conjunction with Porter Center-Strut® height adjustment unit installed on a Porter No. 220 Wall-Mounted Backstop.

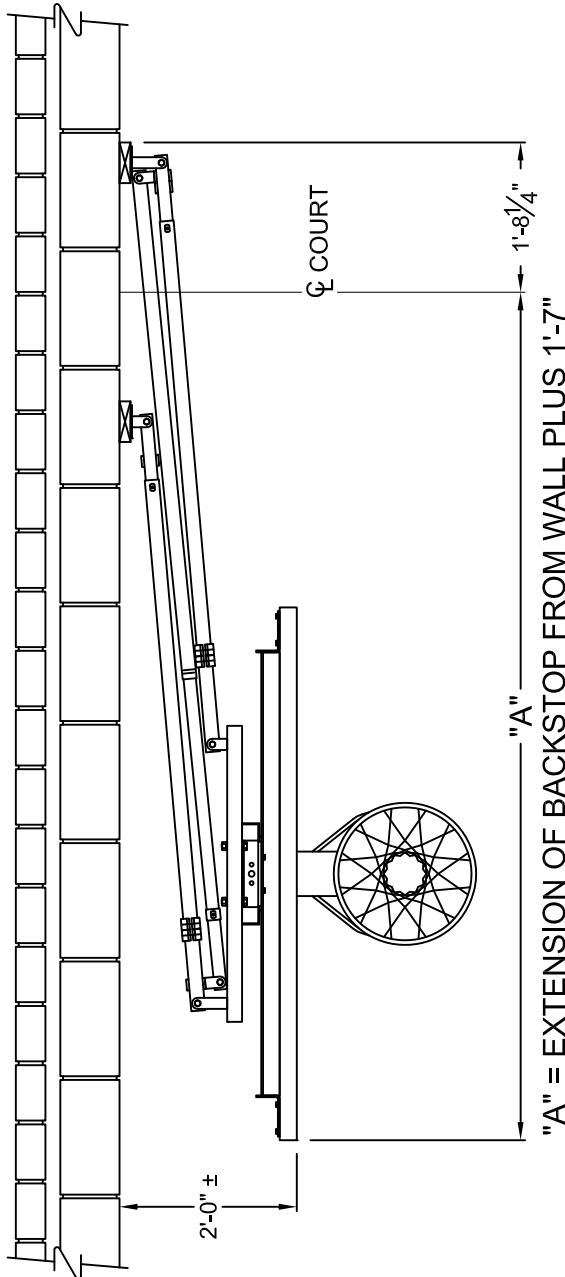
All metal parts shall be painted one (1) coat of flat black enamel. (If special painting of colors is required, specify final painting by painting contractor.)

Specify backboard and goal as required.

220 - FOLDING DIMENSIONS

No. 220 WALL-MOUNTED SIDE-FOLD BACKSTOPS WITH HEIGHT ADJUSTER

WALL-MOUNTED BACKSTOP WITH RECTANGULAR BACKBOARD



WALL-MOUNTED BACKSTOP WITH FAN BACKBOARD

