

00220-000 - SIDE FOLD BACKSTOP

WALL-MOUNTED SIDE-FOLD BACKSTOP WITH CENTER-STRUT® HEIGHT ADJ.
FAN BACKBOARD - 4'-0" to 10'-0" EXTENSION

PORTER

WWW.PORTERATHLETIC.COM/FACILITY

BASKETBALL SPECIFICATION SHEET

W-220-F10H

SEE PAGE NO. W-220-2 FOR FOLDING DIMENSIONS

SEE SHEET W-100 FOR
RECOMMENDED METHODS
OF WALL ANCHORING

ANCHOR SPACING

TUBE LOCATIONS

9'-4" (2.8m)
24" (61cm)
16" (41cm)
16" (41cm)
9'-8" (2.94m)
3'-8 1/2" (1.12m)
TO FLOOR

PORTER RECOMMENDS THE USE OF SAFETY WALL PADDING BEHIND BASKETBALL BACKSTOPS. SEE SPECIFICATIONS FOR STANDARD FIRE-RETARDANT AND GRAPHIC WALL PADDING. SPECIFY AS REQUIRED.

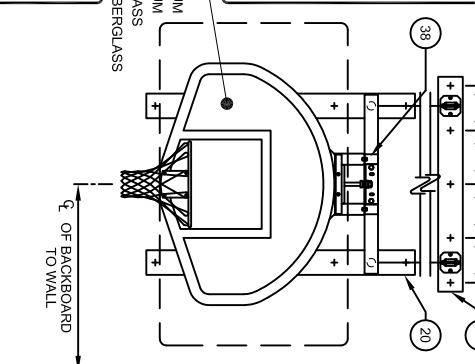
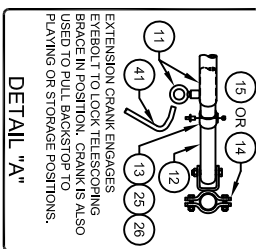
- REQUIRED - SPECIFY BACKBOARD NO.

AND GOAL NO.

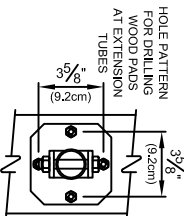
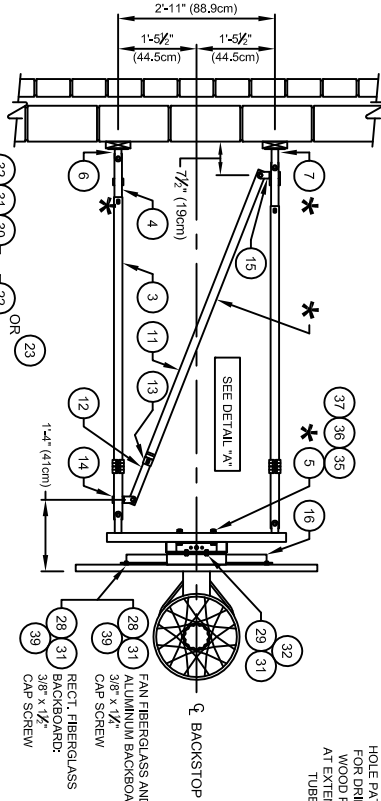
SEE PAGE NO. W-200-2, W-200-1, W-200-2 or W-200-3 FOR DETAILS ON MANUAL AND ELECTRIC HEIGHT ADJUSTERS.

NOTE - HEIGHT ADJUSTMENT FOR USE WITH PORTER NO. 234 FAN FIBERGLASS AND OR 234A FAN ALUMINUM BACKBOARDS

ALUMINUM
234
234A
FIBERGLASS
267A
RECT. FIBERGLASS
216



* SHOWN, TO FOLD BACKSTOP TO THE LEFT AS THE SHORT AND LONG SWIVEL PLATES, SPAN TUBE WELDMENTS, AND TELESCOPING DIAGONAL BRACE.



PARTS LIST	
No.	DESCRIPTION
1	BACKBOARD
2	GOAL WITH NET AND HARDWARE
3	X-EXT 002 OUTER EXTENSION TUBE x Lg.
4	TUBR 00410 002 INNER TELESCOPING EXTENSION TUBE
5	X-EXT 22002 002 SPAN TUBE WELDMENT
6	X-HNG 21201 002 HINGE PLATE ASSEMBLY - SHORT
7	X-HNG 21202 002 HINGE PLATE ASSEMBLY - LONG
8	X-FLT 002 BRACE FLAT x Lg.
9	X-CLP 00001 002 TUBE CLAMP ASSEMBLY; 1 1/2" Lg.
10	X-CLP 00005 002 TUBE CLAMP ASSEMBLY; 1 1/2" Lg.
11	X-BRC 002 OUTER BRACE TUBE x Lg.
12	X-BRC 002 INNER BRACE TUBE x Lg.
13	X-BRC 22002 002 STOP COLLAR
14	X-HNG 0010P 002 PARALLEL HANGER 1 1/2" to 1 1/2"
15	X-HNG 0010N 002 PARALLEL HANGER 1 1/2" to 1 1/2"
16	FRME 00202 002 FAN BACKBOARD SUPPORT
17	FRME 00162 002 HEIGHT ADJUSTER ASSY - Manual Operation
18	LABL 00235 000 HEIGHT SETTINGS LABEL
19	X-PAD 20604 008 2 x 6 WOOD PAD x 4-7" Lg.
20	X-PAD 20605 008 2 x 6 WOOD PAD x 5-7" Lg.
21	CHAN 00004 0E0 3/16" PROOF COIL CHAIN
22	X-HNG 22001 002 SWIVEL PLATE ASSEMBLY - SHORT
23	X-HNG 22002 002 SWIVEL PLATE ASSEMBLY - LONG
24	HDWE 58029 0E0 REPAIR LINK
25	HDWE 08011 000 5/16" x 3/8" Lg. SET SCREW
26	HDWE 58125 0E0 3/8" x 1 1/2" Lg. HAMMER HIT RIVET
27	HDWE 58137 0E0 3/8" x 1 1/2" Lg. HAMMER HIT RIVET
28	HDWE 01124 0E0 3/8" x 1 1/2" Lg. HEX HD. CAP SCR. (G65)
29	HDWE 01125 0E0 3/8" x 1 1/2" Lg. HEX HD. CAP SCR. (G65)
30	HDWE 02057 0E0 3/8" x 1 1/2" Lg. CARRIAGE BOLT (G65)
31	HDWE 03002 0E0 3/8" HEX NUT
32	HDWE 03002 0E0 3/8" HEX NUT
33	HDWE 03002 0E0 3/8" HEX NUT
34	HDWE 03002 0E0 3/8" HEX NUT
35	HDWE 03002 0E0 3/8" HEX NUT
36	HDWE 03002 0E0 3/8" HEX NUT
37	HDWE 03002 0E0 3/8" HEX NUT
38	HDWE 03002 0E0 3/8" HEX NUT
39	HDWE 03002 0E0 3/8" HEX NUT
40	HDWE 03002 0E0 3/8" HEX NUT
41	HDWE 03002 0E0 3/8" HEX NUT

PORTER®

888-277-7778 PORTER@PORTERATHLETIC.COM
© COPYRIGHT 2015 PORTER ATHLETIC - ALL RIGHTS RESERVED

PROJECT NUMBER

PROJECT NAME

10/1/2015

00220-000 - SIDE FOLD BACKSTOP

WALL-MOUNTED SIDE-FOLD BACKSTOP WITH CENTER-STRUT® HEIGHT ADJ.
FAN BACKBOARD - 4'-0" to 10'-0" EXTENSION

SPECIFICATIONS

PORTER No. 00220-____ WALL-MOUNTED SIDE-FOLD BACKSTOP WITH CENTER-STRUT® HEIGHT ADJUSTMENT UNIT FOR FAN BACKBOARD AND RECTANGULAR FIBERGLASS BACKBOARD

Backstop shall be wall-mounted side-fold type with face of backboard extended 4'-0" to 10'-0" from supporting wall. Specify extension.

Extension frames shall be fabricated of four (4) 1-7/8" O.D. tubes with a telescoping end section for ease of installation, and precise plumbing and alignment of backboard with official court markings, even when supported on uneven wall conditions. Ends of telescoping extension frame assemblies shall be drilled and bolted to hinge plate assemblies (short and long) for attachment to the backside of the backboard and to the wall pads. The hinge plate assemblies shall be offset-type, to allow backstop to be folded to a position nearly flat against the wall. The direction of fold is determined at the time of installation by placement of the hinge plate assemblies.

Backstop shall be vertically braced with two (2) 3/16" x 1-1/4" steel tension flats attached at both ends with precision die-formed clamps. Two (2) chain supports (3/16" proof coil chain) shall extend diagonally from the wall to the upper extension tubes, terminating in clamp-type fittings.

Backstop shall be locked into the playing and storage positions by means of a 1-7/8" O.D. telescoping tube assembly, running diagonally across the lower extension tubes. An extension crank shall be provided (one for every two backstops) to operate telescoping brace from the floor. Crank engages eyebolt on telescoping brace to lock it in position. Crank is also used to pull backstop to playing or storage positions.

Southern yellow pine wall pads shall be provided at all wall attachment points. All edges shall be chamfered and pads shall be finished with two finish coats of natural gloss lacquer.

Height adjustment unit shall be designed to provide an adjustable, direct mount Center-Strut® goal attachment system to eliminate any strain on the backboard, should a player hang on the front mounted goal. Height adjustment units without the prescribed direct mount goal feature will not be approved as equal. Height adjustment feature will allow goal height settings from 8'-0" to the official 10'-0" for use by all age groups. Unit shall be designed for use only with Porter No. 267A fan fiberglass, No. 234 or 234A fan aluminum, or No. 216 rectangular fiberglass backboards and companion front-mount type goal.

Center unitized support frame of height adjustment unit shall be fabricated by dual, 2-3/16" square heavy wall zinc plated guide tubes located on 11-3/16" centers. Ends of guide tubes shall be welded to heavy mounting brackets. Outer dual slide tubes shall support heavy structural steel angle sections which extend downward to accept a direct mount Center-Strut® goal mounting system. Slide tube assembly shall be provided with a heavy, formed steel section to attach a special upper backboard support assembly to secure the unit to the upper two corners of the fan-shaped backboard.

Height adjustment unit shall incorporate a centrally located 3/4" diameter Acme threaded rod equipped with precision, hardened steel roller thrust bearings for ease of operation from the playing floor by means of an awning crank-type mechanism. Height adjustment system shall incorporate an internal, spring-loaded height locking mechanism to automatically lock and hold unit at any desired goal height during play. Lock mechanism automatically releases when height setting changes are made with adjustment crank assembly. Adjustment crank assembly shall be provided with each pair of height adjustment units. A height setting scale shall be located on the side of the unit to visually determine height settings from 8'-0" to 10'-0" in 3" increments.

Limited Lifetime warranty on Porter fan-shaped fiberglass (267A), fan-shaped aluminum (234 or 234A), or rectangular fiberglass (216) backboards when used in conjunction with Porter Center-Strut® height adjustment unit installed on a Porter No. 220 Wall-Mounted Backstop.

All metal parts shall be painted one (1) coat of flat black enamel. (If special painting of colors is required, specify final painting by painting contractor.)

Specify backboard and goal as required.