

90219000 - UP FOLD BACKSTOP

WALL-MOUNTED UP-FOLD BACKSTOP FOR FAN BACKBOARD

10'-0 $\frac{1}{8}$ " to 12'-0" EXTENSION

Porter

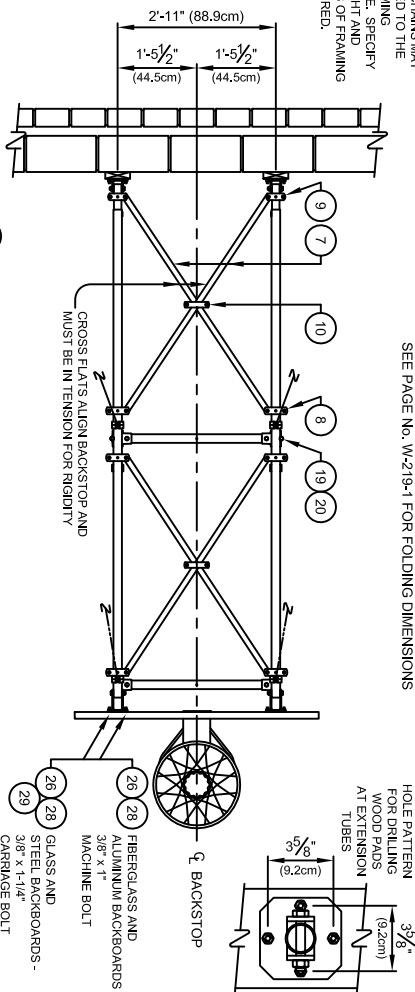
WWW.PORTERATHLETIC.COM/FACILITY

BASKETBALL SPECIFICATION SHEET

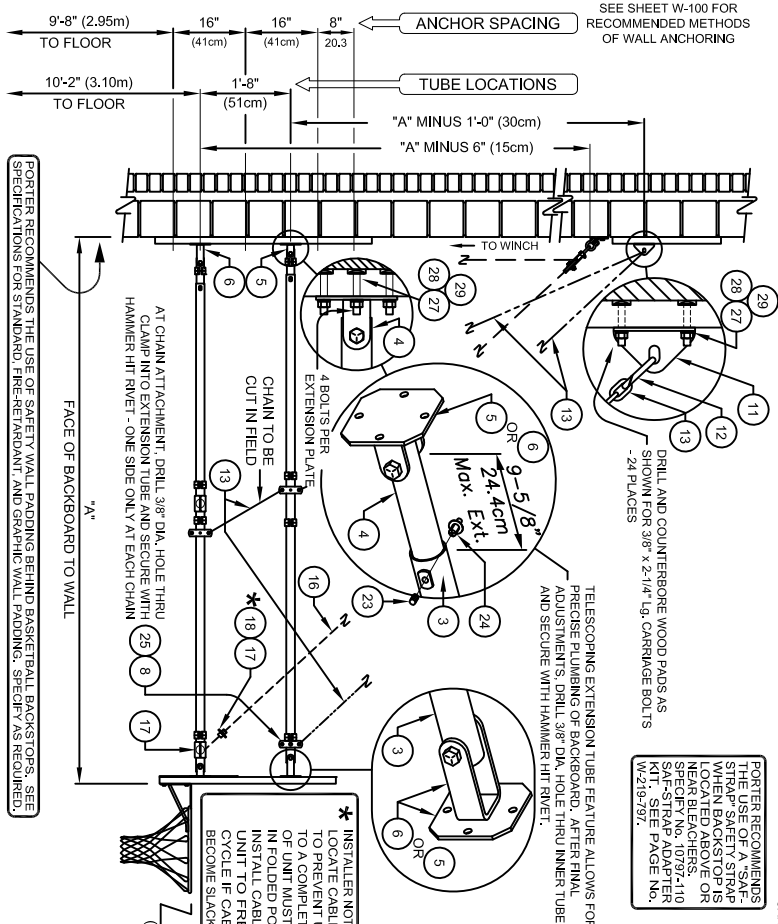
W-219-F12

SUPPORT CHAINS MAY BE SECURED TO THE ROOF FRAMING STRUCTURE. SPECIFY TYPE, HEIGHT AND LOCATION OF FRAMING WHEN DESIRED.

SEE PAGE No. W-219-1 FOR FOLDING DIMENSIONS



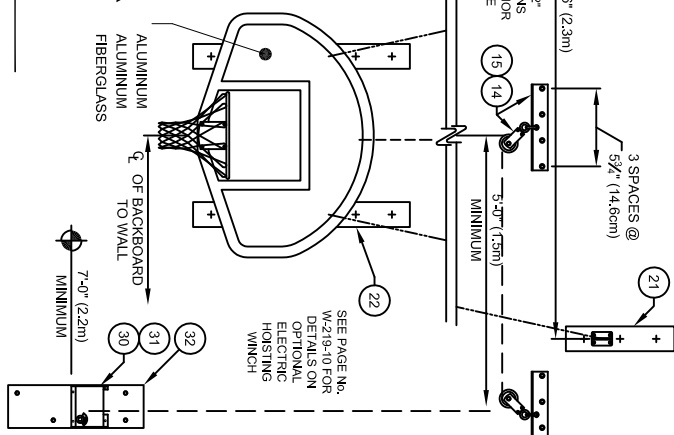
SEE SHEET W-100 FOR RECOMMENDED METHODS OF WALL ANCHORING



PORTER RECOMMENDS THE USE OF A STAMP OR STENCIL WHEN BACKSTOP IS LOCATED ABOVE OR NEAR BLEACHERS. SPECIFY STAMP OR STENCIL KIT. SEE PAGE No. W-219-797.

* INSTALLER NOTE - LOCATE CABLE STOP AS DETAILED TO PREVENT UNIT FROM FOLDING TO COMPLETE 90° FOLD. WEIGHT OF UNIT MUST NOT BE IN BALANCE IN FOLDED POSITION. FAILURE TO INSTALL CABLE STOP MAY CAUSE UNIT TO FREE-FALL IN DOWN CYCLE IF CABLE IS ALLOWED TO BECOME SLACK.

- ☐ 234 ALUMINUM
- ☐ 234A ALUMINUM
- ☐ 267 FIBERGLASS



No.	QTY	DESCRIPTION
1	1	FAN BACKBOARD
2	1	GOAL WITH NET AND HANGWARE
3	4	XTXT 002 INNER TELESCOPING EXTENSION TUBE LG.
4	4	XHNG 00410 002 HINGE PLATE ASSEMBLY - SHORT LG.
5	4	XHNG 21202 002 HINGE PLATE ASSEMBLY - LONG LG.
6	4	XFLT 002 BRACE FLAT x LG.
7	18	XCLP 00001 002 TUBE CLAMP ASSEMBLY - 1/2"
8	4	XCLP 00005 002 TUBE CLAMP ASSEMBLY - 5/8"
9	4	XHNG 21212 002 HINGE ANGLE W/SLUT @ SUPPORT CHAINS
10	4	HDWE 58029 002 REPAIR LINK
11	2	CHLN 00004 002 3/8" PROOF COIL CHAIN
12	2	XPUL 57401 000 PULLEY ASSEMBLY
13	2	XPUL 50500 002 PULLEY WALL MOUNTING BRACKET
14	1	ROPE 00037 000 1/4" GALVANIZED CABLE
15	1	ROPE 00037 000 1/4" CABLE CLAMP
16	1	HDWE 55011 000 PLATE WASHER
17	4	XTBR 21203 002 SPREADER TUBE w/ CABLE HOLE
18	2	XPAD 20802 008 2 x 8 WOOD PAD x 2-21/2" LG.
19	2	XPAD 20804 008 3/8 x 3/8 LG. SET SCREW
20	4	HDWE 08011 000 3/8 x 1/2 LG. HAMMER HIT RIVET
21	4	HDWE 08113 000 3/8 x 1/2 LG. HAMMER HIT RIVET
22	4	HDWE 02057 000 3/8 x 2 1/2 LG. CARRIAGE BOLT (Grade 5)
23	24	HDWE 03002 000 3/8" HEX NUT
24	24	HDWE 03002 000 3/8" LOCKWASHER
25	32	HDWE 03002 000 3/8" HEX NUT
26	32	HDWE 03002 000 3/8" LOCKWASHER
27	32	HDWE 03002 000 3/8" HEX NUT
28	32	HDWE 03002 000 3/8" LOCKWASHER
29	32	HDWE 03002 000 3/8" HEX NUT
30	32	HDWE 03002 000 3/8" LOCKWASHER
31	1	XCRR 70000 002 WINCH CRANK (1 per 2 Winches)
32	1	XPAD 21002 608 2 x 10 WOOD PAD x 2'-6" LG.

Porter

888-277-7778 PORTER@PORTERATHLETIC.COM
© COPYRIGHT 2015 PORTER ATHLETIC - ALL RIGHTS RESERVED

PROJECT NUMBER

PROJECT NAME

10/1/2015

90219000 - UP FOLD BACKSTOP

WALL-MOUNTED UP-FOLD BACKSTOP FOR FAN BACKBOARD
10'-0 $\frac{1}{8}$ " to 12'-0" EXTENSION

SPECIFICATIONS

PORTER No. 00219- WALL-MOUNTED FOLD-UP BACKSTOP FOR FAN BACKBOARD AND RECTANGULAR FIBERGLASS BACKBOARD

Backstop shall be wall-mounted fold-up type with face of backboard extended 10' 0-1/8" to 12'-0" from supporting wall. Specify extension.

Extension frames shall be fabricated of four (4) 1-7/8" O.D. tubes with a telescoping end section for ease of installation, and precise plumbing and alignment of backboard with official court markings, even when supported on uneven wall conditions. Ends of extension frame assemblies shall be drilled and bolted to fabricated steel hinge plates for attachment to the backside of the backboard and to the wall pads. Hinge plates shall be offset-type to allow backstop to be folded in an almost vertical storage position against the wall.

Backstop shall be horizontally braced with eight (8) 3/16" x 1-1/4" steel tension flats attached at both ends with precision die-formed clamps and joined at their intersections with bolted steel fittings. The lower extension tubes shall be braced mid-span by a 1-7/8" O. D. tube attached with ductile iron "T" casting assemblies. Two (2) chain supports (3/16" proof coil chain) shall extend diagonally from the wall to the upper extension tubes, terminating in clamp-type fittings. Two (2) chain supports (3/16" proof coil chain) and clamp-type fittings shall be provided for additional vertical bracing between the extension tubes.

Southern yellow pine wall pads shall be provided at wall attachment points at extension frames and chain supports. All edges shall be chamfered and pads shall be finished with two finish coats of natural gloss lacquer.

Winch shall be worm gear type, designed to hold unit at any position when raising or lowering backstop. Handle shall be removable and shall provide sufficient leverage to facilitate easy raising of the backstop. Winch drum and gears shall be fully enclosed with a plated steel cover. Hoisting cable shall be 1/4" diameter galvanized aircraft cable, operating through 4" diameter pulleys enroute to the winch.

All metal parts shall be painted one (1) coat of flat black enamel. (If special painting of colors is required, specify final painting by painting contractor.)

Specify backboard and goal as required.

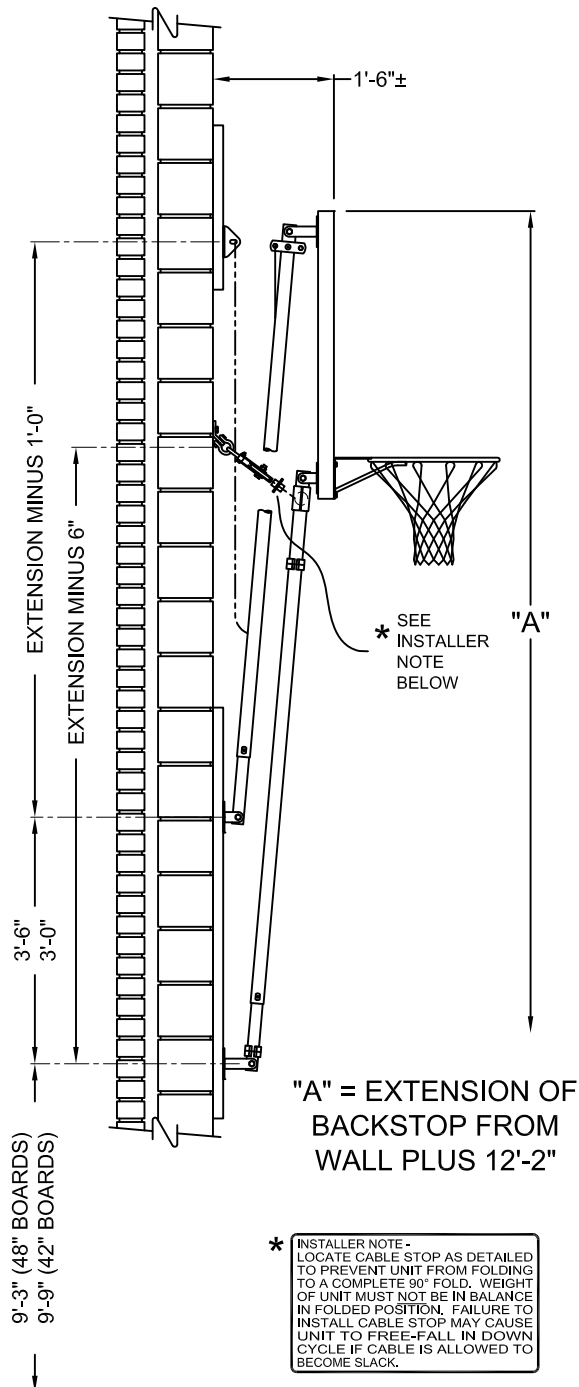
OPTIONAL ITEMS TO SPECIFY

See Page No. W-219-797 for specifications on Porter No. 10797-110 Saf-Strap Adapter Kit.

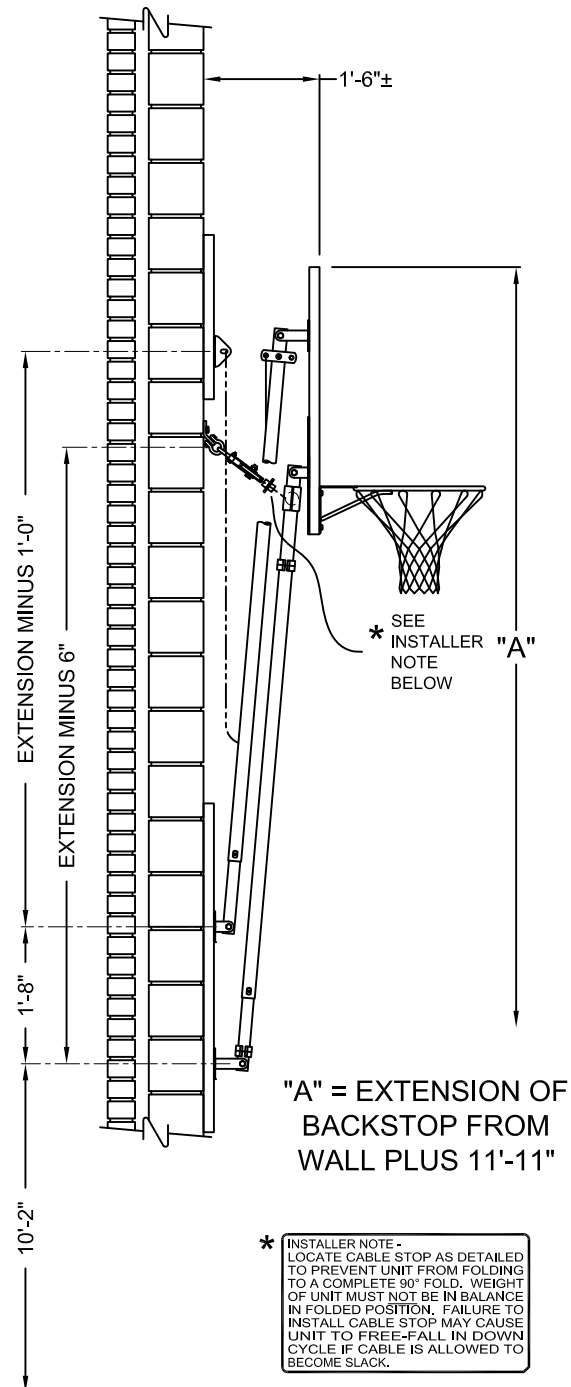
219 FOLDING DIMENSIONS

No. 219 WALL-MOUNTED UP-FOLD BACKSTOPS WITHOUT HEIGHT ADJUSTER

WALL-MOUNTED BACKSTOP WITH RECTANGULAR BACKBOARD



WALL-MOUNTED BACKSTOP WITH FAN BACKBOARD



Porter

WWW.PORTERATHLETIC.COM/FACILITY

FOLDING DIMENSION SPECIFICATION SHEET

W-219-1

Porter®

888-277-7778 PORTER@PORTERATHLETIC.COM
© COPYRIGHT 2015 PORTER ATHLETIC - ALL RIGHTS RESERVED

PROJECT NUMBER

PROJECT NAME

10/1/2015