

00219-000 - UP FOLD BACKSTOP

WALL-MOUNTED UP-FOLD BACKSTOP FOR FAN BACKBOARD 4'-0" to 10'-0" EXTENSION

Porter

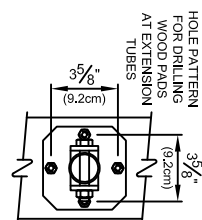
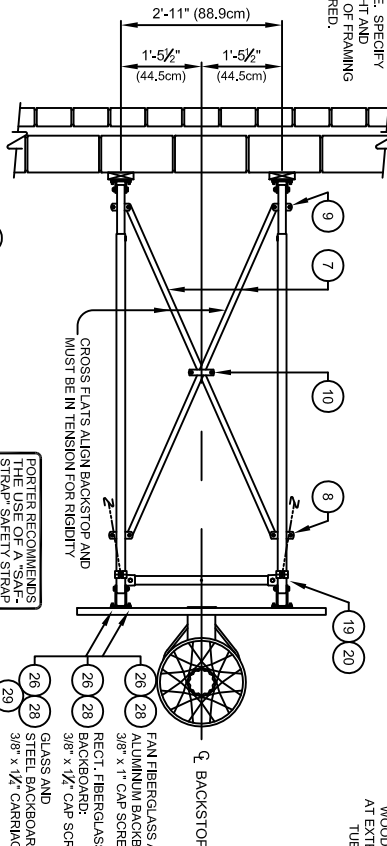
WWW.PORTERATHLETIC.COM/FACILITY

BASKETBALL SPECIFICATION SHEET

W-219-F10

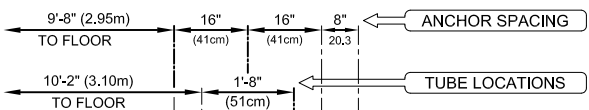
SUPPORT CHAINS MAY BE SECURED TO THE ROOF FRAMING STRUCTURE. SPECIFY TYPE, HEIGHT AND LOCATIONS OF FRAMING WHEN DESIRED.

SEE PAGE No. W-219-1 FOR FOLDING DIMENSIONS



No.	QTY.	PARTS LIST	DESCRIPTION
1	1	BACKBOARD	GOAL WITH NET AND HARDWARE
2	1	EXT	EXTENSION TUBE x Lg.
3	4	TUBER	00410 002 INNER TELESCOPING EXTENSION TUBE
4	4	XHNG	21201 002 HINGE PLATE ASSEMBLY - SHORT
5	4	XHNG	21202 002 HINGE PLATE ASSEMBLY - LONG
6	4	XFLT	002 BRACE FLAT x Lg.
7	4	XCLP	00001 002 TUBE CLAMP ASSEMBLY - 1/2"
8	4	XCLP	00005 002 TUBE CLAMP ASSEMBLY - 1/2"
9	1	XCLP	76500 002 FLAT PLATE ASSEMBLY
10	1	XHNG	21212 002 HINGE ANGLE W/SLOT @ SUPPORT CHAINS
11	4	HOVE	56029 0E0 REPAIR LINK
12	2	CHAN	00004 0E0 3/16" PROOF COIL CHAIN
13	2	XPUL	57401 000 PULLEY WALL MOUNTING BRACKET
14	2	XPUL	50500 002 1/4" GALVANIZED CABLE
15	1	ROPE	00039 0E0 1/4" GALVANIZED CABLE
16	1	ROPE	00037 000 1/4" CABLE CLAMP
17	1	HOVE	55011 0E0 PLATE WASHER
18	1	XTEE	81701 002 SPREADER TUBE w/ CABLE HOLE
19	2	XBER	21203 002 TEE ASSEMBLY - 1/2" to 1/2"
20	1	XPAD	20602 00B 2 x 6 WOOD PAD x 24" Lg.
21	2	XPAD	20604 00B 2 x 6 WOOD PAD x 44" Lg.
22	2	HOVE	09011 000 5/16" x 9/8" Lg. SET SCREW
23	4	HOVE	58125 0E0 3/8 x 1/2" Lg. HAMMER HIT RIVET
24	4	HOVE	58137 0E0 3/8 x 1 1/16" Lg. HAMMER HIT RIVET
25	2	HOVE	02051 0E0 3/8 x 2 1/2" Lg. CARRIAGE BOLT (Grade 5)
26	2	HOVE	02051 0E0 3/8 x 2 1/2" Lg. CARRIAGE BOLT (Grade 5)
27	2	HOVE	02051 0E0 3/8 x 2 1/2" Lg. CARRIAGE BOLT (Grade 5)
28	2	HOVE	02051 0E0 3/8 x 2 1/2" Lg. CARRIAGE BOLT (Grade 5)
29	2	HOVE	02051 0E0 3/8 x 2 1/2" Lg. CARRIAGE BOLT (Grade 5)
30	2	HOVE	02051 0E0 3/8 x 2 1/2" Lg. CARRIAGE BOLT (Grade 5)
31	2	HOVE	02051 0E0 3/8 x 2 1/2" Lg. CARRIAGE BOLT (Grade 5)
32	1	XPAD	21002 80B 2 x 10 WOOD PAD x 24" Lg.

SEE SHEET W-100 FOR RECOMMENDED METHODS OF WALL ANCHORING



"A" MINUS 1'-0" (30cm)
"A" MINUS 6" (15cm)

ANCHOR SPACING

TUBE LOCATIONS

TO WINCH

4 BOLTS PER EXTENSION PLATE

AT CHAIN ATTACHMENT, DRILL 3/8" DIA. HOLE THRU CLAMP INTO EXTENSION TUBE AND SECURE WITH HAMMER HIT RIVET - ONE SIDE ONLY AT EACH CHAIN

FACE OF BACKBOARD TO WALL

"A"

TELESCOPING EXTENSION TUBE FEATURE ALLOWS FOR PROPER POSITIONING OF BACKBOARD AFTER FINAL PRELIMINARY DRILLING OF ANCHOR TUBES AND SECURE WITH HAMMER HIT RIVET.

DRILL AND COUNTERBORE WOOD CARRIAGE BOLTS - 24 PLACES

PORTER RECOMMENDS THE SAFETY STRAP LOCATED ABOVE OR NEAR BLEACHERS, OR SPECIFICALLY IDENTIFIED KIT - SEE PAGE No. W-219-797.

CHAIN SPACING AT WALL

EXTENSION

4'-0" to 5'-0" (1.22m to 1.52m)
5'-0" to 6'-0" (1.52m to 1.83m)
6'-0" to 7'-0" (1.83m to 2.13m)
7'-0" to 8'-0" (2.13m to 2.44m)
8'-0" to 9'-0" (2.44m to 2.74m)
9'-0" to 10'-0" (2.74m to 3.05m)

4'-0" (1.22m)
4'-6" (1.37m)
5'-0" (1.52m)
5'-6" (1.68m)
6'-0" (1.83m)
6'-6" (1.98m)

MINIMUM OF TWO (2) 1/2" THRU-LOUT CONNECTIONS REQUIRED AT EACH ANCHOR PLATE / WOOD PAD (SEE DRAWING No. W-100)

3 SPACES @ 3/8" (14.6cm)

SEE CHART

MINIMUM

5'-0" (1.5m)

SEE PAGE No. W-219-10 FOR DETAILS ON OPTIONAL ELECTRIC HOISTING WINCH

TO BACKBOARD

TO WALL

7'-0" (2.1m)

MINIMUM

21

22

23

24

25

26

27

28

29

30

31

32

33

34

35

36

37

38

39

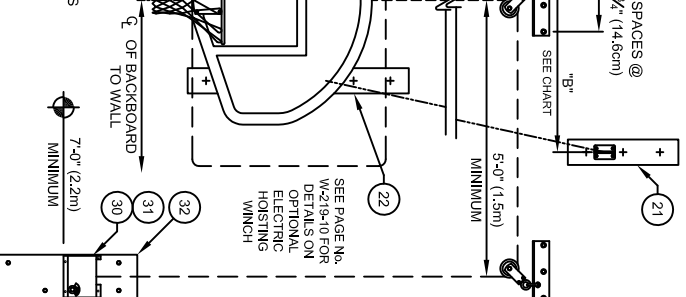
40

41

PORTER RECOMMENDS THE USE OF SAFETY WALL PADDING BEHIND BASKETBALL BACKSTOPS. SEE SPECIFICATIONS FOR STANDARD, FIRE-RETARDANT, AND GRAPHIC WALL PADDING. SPECIFY AS REQUIRED.

AND GOAL No. _____

- ☐ 234 ALUMINUM
- ☐ 234A ALUMINUM
- ☐ 267 FIBERGLASS
- ☐ 216 RECT. FIBERGLASS



Porter

888-277-7778 PORTER@PORTERATHLETIC.COM
© COPYRIGHT 2015 PORTER ATHLETIC - ALL RIGHTS RESERVED

PROJECT NUMBER

PROJECT NAME

10/1/2015

00219-000 - UP FOLD BACKSTOP

WALL-MOUNTED UP-FOLD BACKSTOP FOR FAN BACKBOARD
4'-0" to 10'-0" EXTENSION

SPECIFICATIONS

PORTER No. 00219-____ WALL-MOUNTED FOLD-UP BACKSTOP FOR FAN BACKBOARD AND RECTANGULAR FIBERGLASS BACKBOARD

Backstop shall be wall-mounted fold-up type with face of backboard extended 4'-0" to 10'-0" from supporting wall. Specify extension.

Extension frames shall be fabricated of four (4) 1-7/8" O.D. tubes with a telescoping end section for ease of installation, and precise plumbing and alignment of backboard with official court markings, even when supported on uneven wall conditions. Ends of extension frame assemblies shall be drilled and bolted to fabricated steel hinge plates for attachment to the backside of the backboard and to the wall pads. Hinge plates shall be offset-type to allow backstop to be folded in an almost vertical storage position against the wall.

Backstop shall be horizontally braced with two (2) 3/16" x 1-1/4" steel tension flats attached at both ends with precision die-formed clamps and joined at their intersection with a bolted steel fitting. Two (2) chain supports (3/16" proof coil chain) shall extend diagonally from the wall to the upper extension tubes, terminating in clamp-type fittings.

Southern yellow pine wall pads shall be provided at wall attachment points at extension frames and chain supports. All edges shall be chamfered and pads shall be finished with two finish coats of natural gloss lacquer.

Winch shall be worm gear type, designed to hold unit at any position when raising or lowering backstop. Handle shall be removable and shall provide sufficient leverage to facilitate easy raising of the backstop. Winch drum and gears shall be fully enclosed with a plated steel cover. Hoisting cable shall be 1/4" diameter galvanized aircraft cable, operating through 4" diameter pulleys en route to the winch.

All metal parts shall be painted one (1) coat of flat black enamel. (If special painting of colors is required, specify final painting by painting contractor.)
Specify backboard and goal as required.

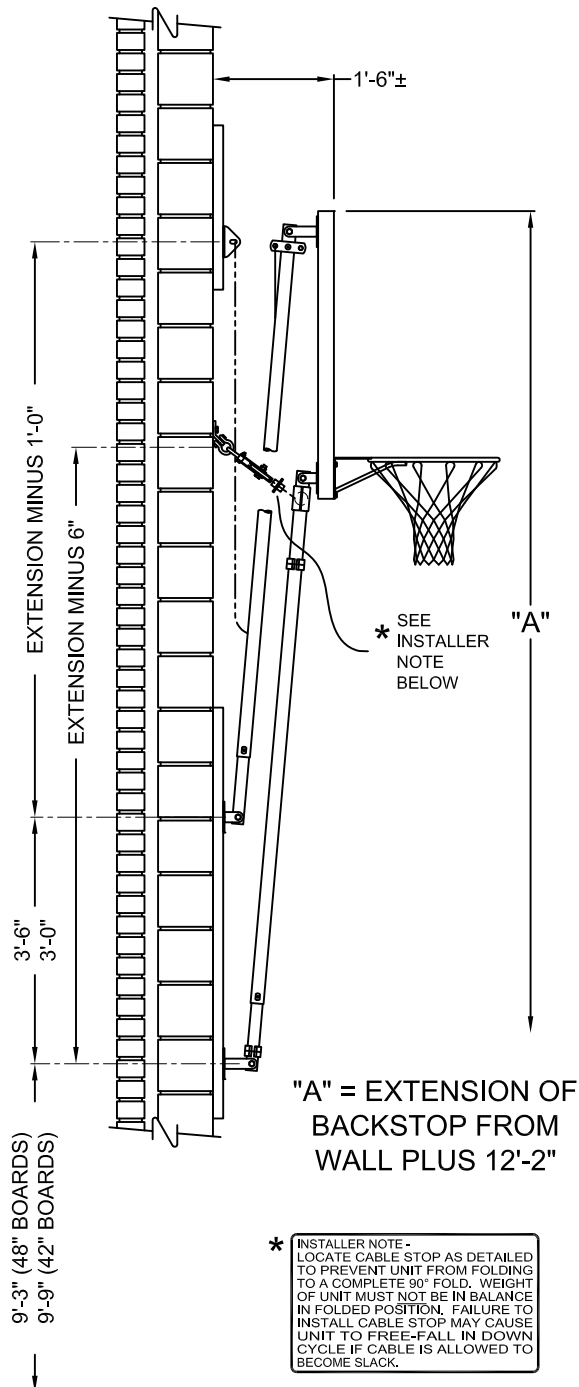
OPTIONAL ITEMS TO SPECIFY

- See Page No. W-219-797 for specifications on Porter No. 10797-110 Saf-Strap Adapter Kit.

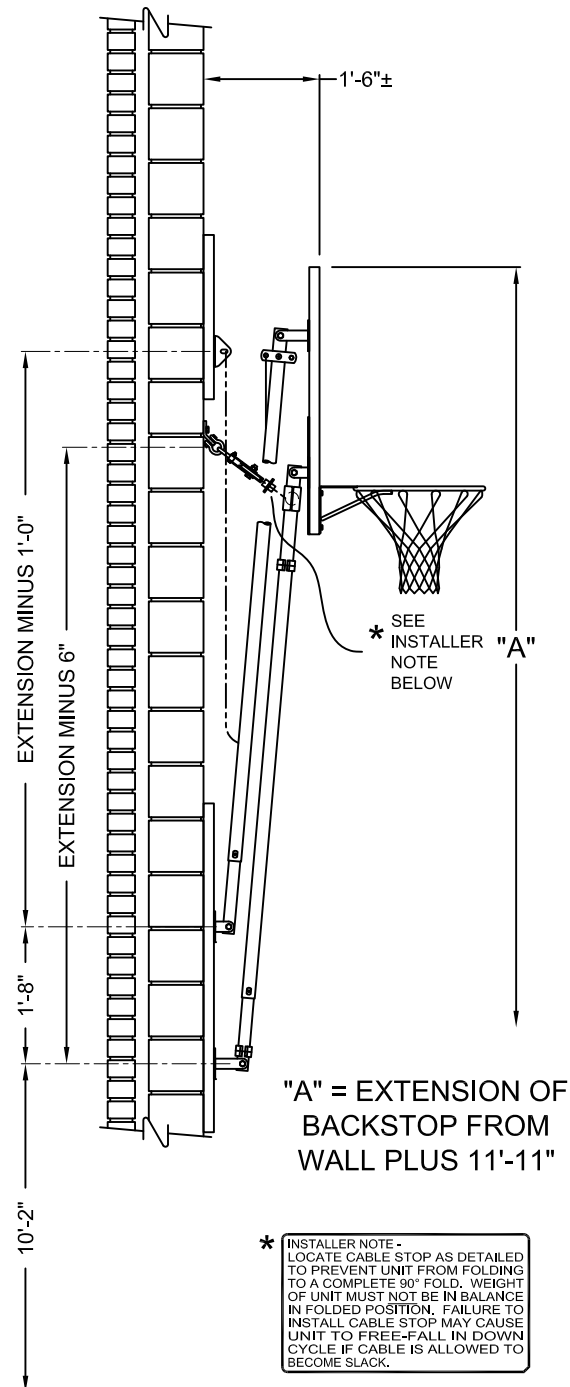
219 FOLDING DIMENSIONS

No. 219 WALL-MOUNTED UP-FOLD BACKSTOPS WITHOUT HEIGHT ADJUSTER

WALL-MOUNTED BACKSTOP WITH RECTANGULAR BACKBOARD



WALL-MOUNTED BACKSTOP WITH FAN BACKBOARD



Porter

WWW.PORTERATHLETIC.COM/FACILITY

FOLDING DIMENSION SPECIFICATION SHEET

W-219-1

Porter®

888-277-7778 PORTER@PORTERATHLETIC.COM
© COPYRIGHT 2015 PORTER ATHLETIC - ALL RIGHTS RESERVED

PROJECT NUMBER

PROJECT NAME

10/1/2015