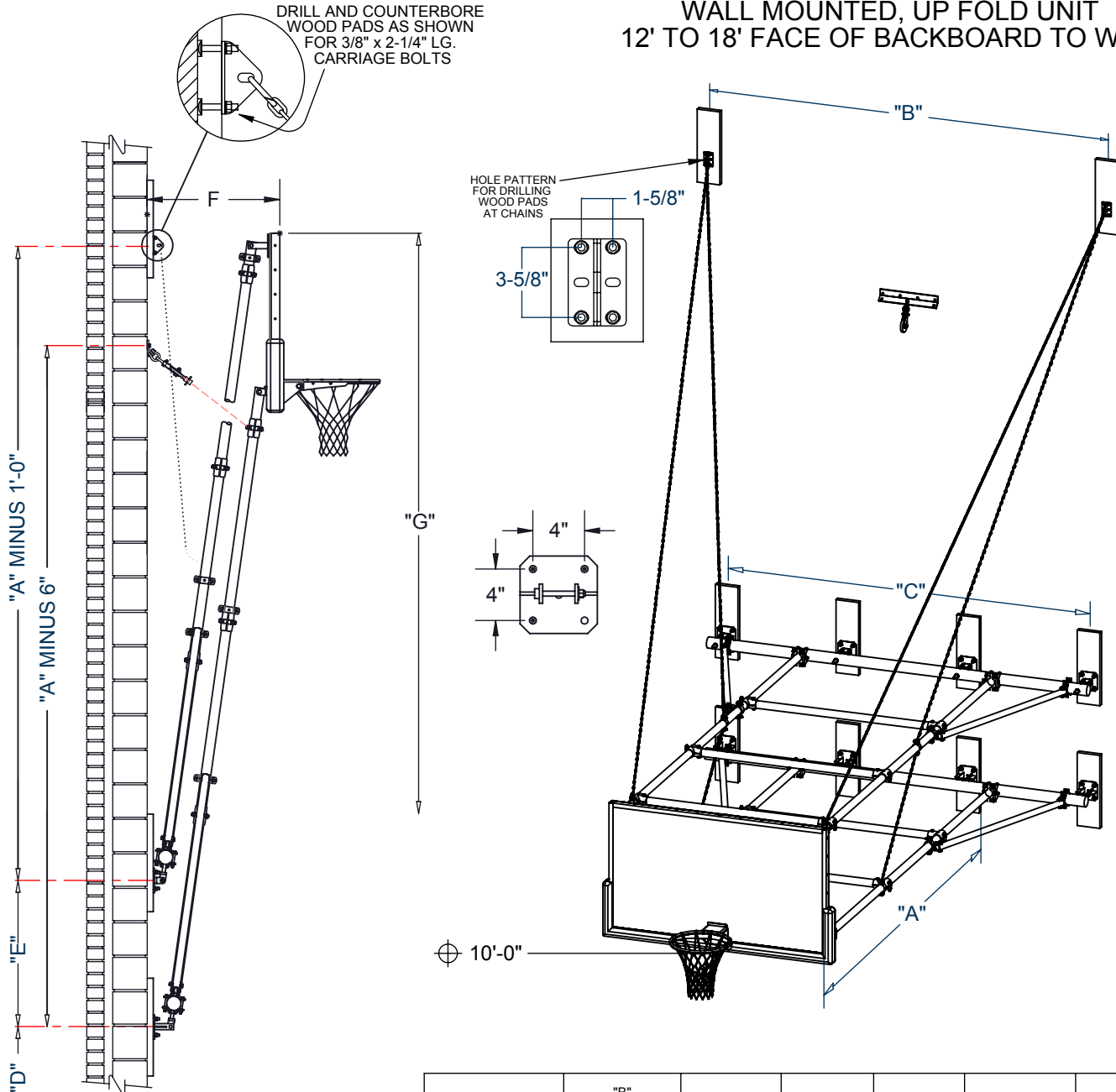


90219000 - UP FOLD BACKSTOP

WALL MOUNTED, UP FOLD UNIT
12' TO 18' FACE OF BACKBOARD TO WALL



BACKBOARD STYLE (SEE B-200)	"B" CHAIN HANGER DISTANCE (RECTANGULAR NO HEIGHT ADJUSTER)	"C" PIPE SUPPORT DISTANCE	"D" HINGE TO FLOOR	"E" VERTICAL PIPE SUPPORT DISTANCE	"F" FACE OF BACKBOARD TO WALL (UP POSITION)	"G" HEIGHT OF BACKSTOP IN UP POSITION
RECTANGULAR	10'-6" - 13'-0" (3.2m) - (3.9m)	9'-5" (2.87m)	9'-9" (2.97m)	3'-0" (0.92m)	2'-6" ± (0.76m)	"A" + 12'-2"
RECTANGULAR WITH HEIGHT ADJUSTER	10'-6" - 13'-0" (3.2m) - (3.9m)	9'-5" (2.87m)	9'-8 1/2" (2.96m)	3'-8 1/4" (1.12m)	3'-0" ± (1.05m)	"A" + 12'-2"

AVAILABLE WITH MANUAL OR ELECTRIC WINCH OPTIONS

- 90219000 WALL MOUNTED, UP FOLD UNIT
- FACE OF BACKBOARD TO WALL ("A")
- BACKBOARD SELECTION
- GOAL SELECTION
- PADDING SELECTION
- WINCH SELECTION

90219000 - UP FOLD BACKSTOP

WALL MOUNTED, UP FOLD UNIT
12' TO 18' FACE OF BACKBOARD TO WALL

SPECIFICATIONS

Backstop shall be wall-mounted fold-up type with face of backboard extended 12' 0-1/8" to 18'-0" from supporting wall.

Frames shall be fabricated of four (4) 2-3/8" O.D. tubes. Precise plumbing and alignment of backboard with official court markings. Front of frame assemblies shall be drilled and bolted to fabricated steel hinge plates for attachment to the backside of the backboard. Opposite end will be connected perpendicular to horizontal 3-1/2" O.D. tube via four (4) tee assemblies. There will be four (4) 1-7/8" O.D. sway braces diagonal from the 2-3/8" O.D. frame tubes to the horizontal 3-1/2" O.D. tubes for additional support. Hinge plates shall be offset-type to allow backstop to be folded in an nearly vertical storage position against the wall.

Backstop shall be horizontally braced with four (4) 2-3/8" O.D. tubes attached to the frames with "T" castings. Two chain supports (3/16" proof coil chain) shall extend diagonally from the wall to the upper extension tubes, terminating in clamp-type fittings. Two chain supports (3/16" proof coil chain) and clamp-type fittings shall be provided for additional vertical bracing between the frame tubes.

Southern yellow pine wall pads shall be provided at wall attachment points for frame hinges and chain supports. All edges shall be chamfered and pads shall be finished with two finish coats of natural gloss lacquer. Wood pads help distribute loads to walls. Some walls may not require wood pads.

All metal parts shall be powder coated. See swatch card SMPL00048024 for standard color options. (contact Porter for custom color requests)

Backstop provided with specified backboard and goal (see B-200 for options).

See winch specifications for more information on included Porter winch system and control options. (manual- see B-700, electric see B-701)

WARRANTY

- Wall mounted backstop structure comes with a 10 year limited warranty.
- Other components may be covered by their own warranty (see corresponding specifications for more details).

OPTIONAL ITEMS (SEE SPECIFICATION SHEETS FOR DETAIL)

- Saf-Strap (No. 10797100)
- Height Adjuster (8' to 10' adjustable goal height) (see chart below)

CENTER-STRUT® HEIGHT ADJUSTER

- For Manual Operation, See Page No.:
 - For Key Switch Operation, See Page No.:
 - For Powr-Stick Operation, See Page No.:
 - For Sportsonic® II Operation, See Page No.:
 - For Powr-Touch Operation, See Page No.
- B-900-506 (Rectangular Boards) B-900-211 (Fan Boards)
B-901-506 (Rectangular Boards) B-901-211 (Fan Boards)
B-902-506 (Rectangular Boards) B-902-211 (Fan Boards)
B-903-506 (Rectangular Boards) B-903-211 (Fan Boards)
B-904-506 (Rectangular Boards) B-904-211 (Fan Boards)

LEED® SUBMITTAL INFORMATION

Credit	Measure
MRc4-Recycled Content	Post Consumer Average 15.0% Post Industrial 0%
MRc5-Regional Materials	Raw materials originate from multiple sources so origin point cannot be determined. Final Manufacturing/Assembly in Champaign, IL 61822