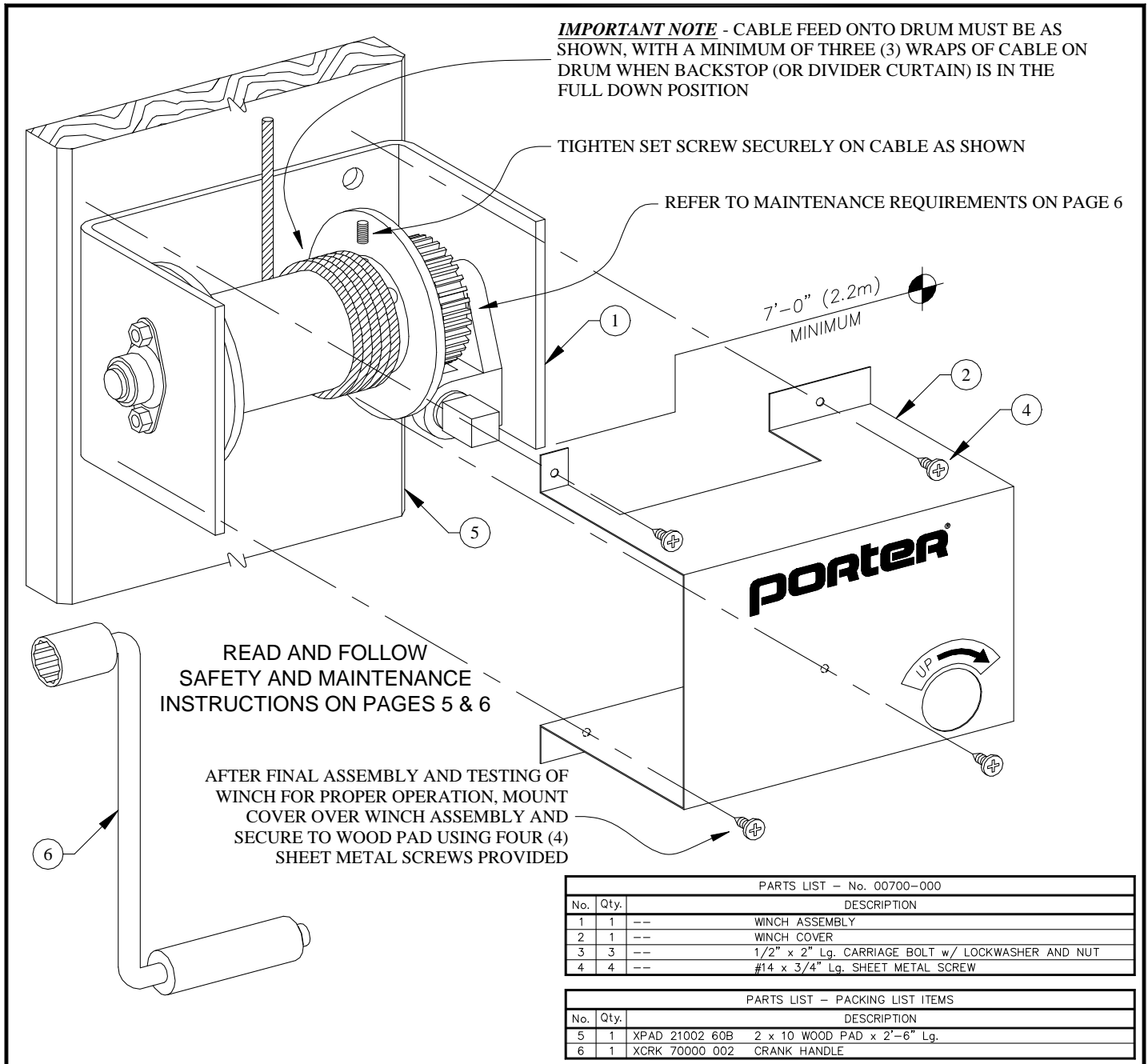


INSTALLATION, OPERATION & MAINTENANCE MANUAL

MANUAL WINCH No. 00700-000



SAVE THESE INSTRUCTIONS FOR FUTURE USE



WARNING

READ ALL INSTRUCTIONS THOROUGHLY BEFORE ATTEMPTING TO ASSEMBLE THIS EQUIPMENT.

PARTS LIST – No. 00700-000 MANUAL WINCH

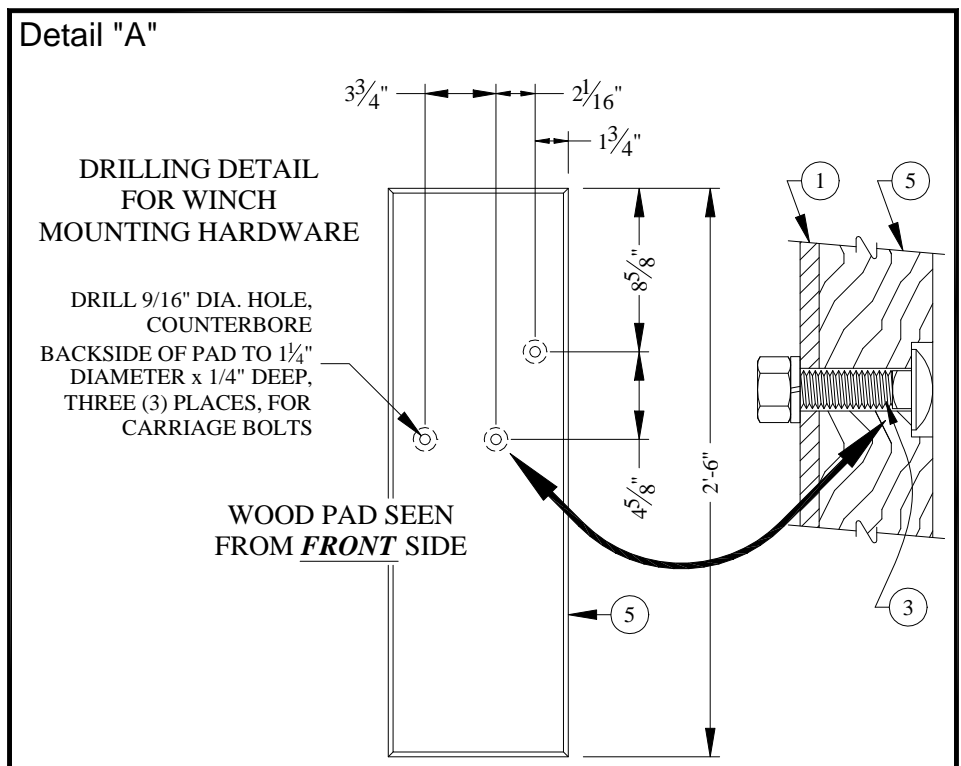
Item No.	Qty.	Description	Item No.	Qty.	Description
1	1	Winch Assembly	3	3	1/2" x 2" lg. Carriage Bolt w/ Lockwasher & Nut
2	1	Winch Cover	4	4	#14 x 3/4" lg. Sheet Metal Screw

PARTS LIST – PACKING LIST ITEMS

Item No.	Part No.	Qty.	Description
5	XPAD 21002 60B	1	2 x 10 Wood Pad x 2'-6" lg.
6	XCRK 70000 002	1	Crank Handle

MOUNT WINCH TO WOOD PAD

1. Drill and counterbore wood pad (5) for securing winch assembly (1) to wood pad. See Detail "A".
2. Mount winch assembly to wood pad using three 1/2" x 2" lg. carriage bolts, lockwashers and hex nuts. Note – this hardware is packed with the winch. See Detail "A".



ANCHOR WOOD PAD / WINCH TO WALL

3. Before installing wood pad/winch assembly to wall, verify exact location of winch with owner or architect. In determining the exact winch location, the following must be considered:

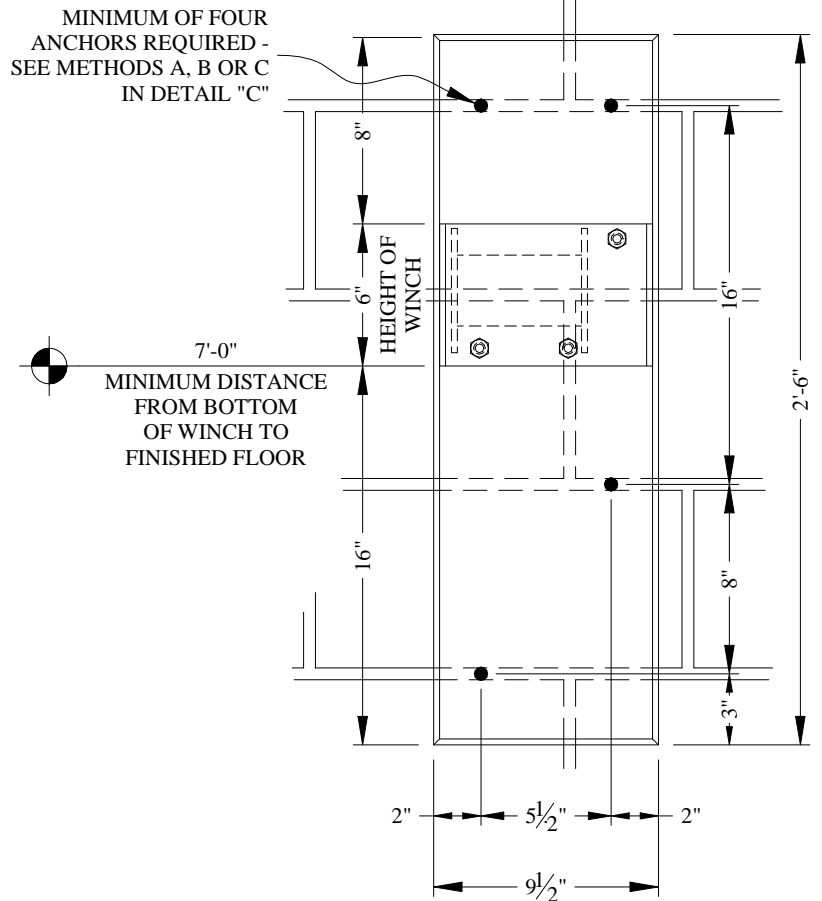
- ❑ The operator must have a clear view of the equipment he/she is operating.
- ❑ Anticipate path of cable between winch and pulley(s). Structural members, lights, ducts, drain pipes, etc. are potential obstacles.
- ❑ The path of the cable cannot cause it to contact any part of the backstop mast during the folding cycles.
- ❑ Extensive cable travel will require additional idler pulleys to support the cable run.

Refer to separate installation manual supplied with backstops, etc. for supplemental information on winch location, cable routing, etc.

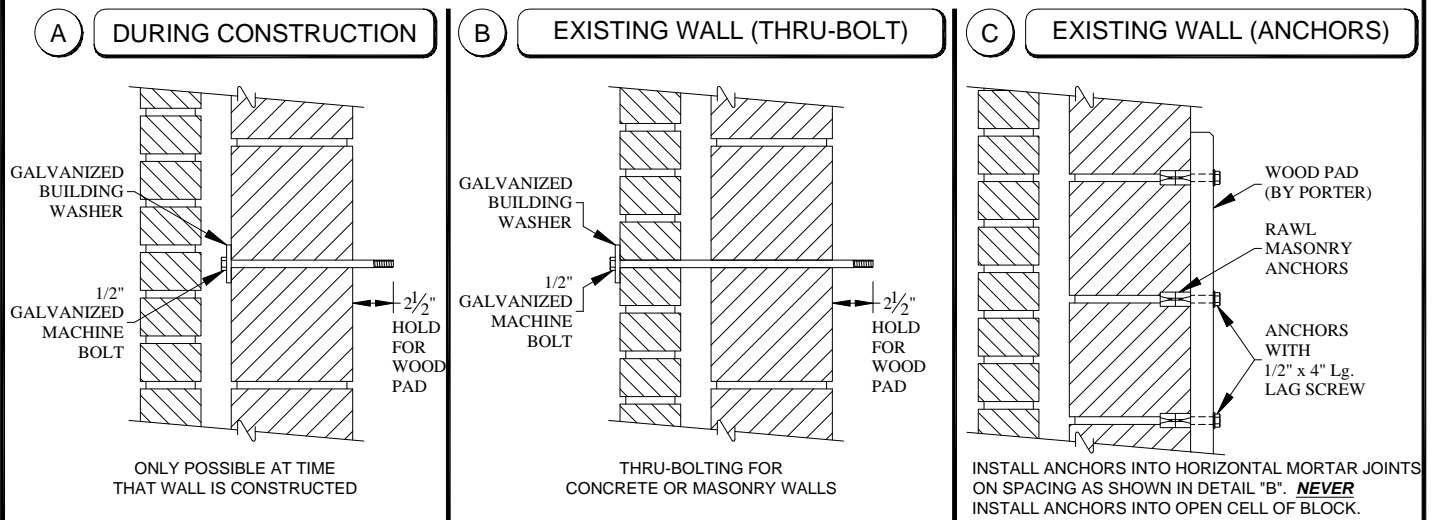
4. Anchor wood pad/winch assembly (from Step No. 2) to wall, using one of three suggested anchor detail methods shown in Detail "C". See Detail "B" for anchor spacing on wood pad. Consult with architect or engineer to verify wall capacity and to select appropriate connections.

5. As an alternate, the winch can be mounted to the face of a steel column (not shown).

Detail "B"



Detail "C"



NOTE - ALL HARDWARE FOR ATTACHING WOOD PAD TO WALL ARE BY OTHERS. VERIFY MATERIAL AND THICKNESS OF WALL, AND USE APPROPRIATE HARDWARE / ANCHOR COMBINATION (MINIMUM 1/2" DIA. HARDWARE).

SECURE CABLE TO WINCH DRUM

6. Route end of cable through hole in the winch drum and secure with set screw. Note that cable must be taped before cutting to prevent the cable end from fraying. Be sure to route cable in the UNDERWIND direction as detailed on Page 1. **THERE MUST BE A MINIMUM OF THREE (3) WRAPS OF CABLE ON THE DRUM WITH THE BACKSTOP IN THE "DOWN" POSITION.**
7. Test winch for proper operation. Install winch cover to wood pad, using four (4) #14 x 3/4" lg. sheet metal screws provided with winch. See detail on Page 1.
8. Refer to Maintenance note on Page 8.
9. Demonstrate operation of manual winch to customer. Emphasize safety precautions and maintenance requirements as detailed on Pages 7 and 8.

MODEL No. 700 MANUAL WINCH **OPERATING INSTRUCTIONS**

- ① This winch to be operated only by a trained adult.
- ② Drive shaft must rotate clockwise during raising cycle.
- ③ Keep area under backstops (floor and bleachers) clear of spectators when raising or lowering equipment.
- ④ Stop upward travel of backstops before contact with ceiling or other support structure is made.
- ⑤ Do not allow cable to become slack.
- ⑥ Operating handles or the No. 269 portable electric winch operator should be in the possession of responsible trained personnel at all times.
CAUTION - Do not use a standard type electric drill to operate this unit.

MAINTENANCE INSTRUCTIONS

Periodically inspect this unit (every three to four months is recommended). During inspection check the gears for excessive wear or binding, replacing worn or defective parts as necessary and lubricate gears liberally with a high quality, open-faced gear type grease. Pyroshield open-faced gear type grease is highly recommended for its non-melting, wear reducing and adhesive characteristics. Pyroshield lubricant is available from Porter Athletic, Inc. or a local Porter dealer in 11 oz. tubes (part no. MISC 00110 000) to fit standard utility or caulking type guns for ease of application. Periodically inspect cable, pulleys, safety locks and all attachment points of stress for any sign of looseness, wear or fatigue; repair immediately. An ongoing Inspection/Maintenance Log is recommended to ensure long life and safe operation of this unit.

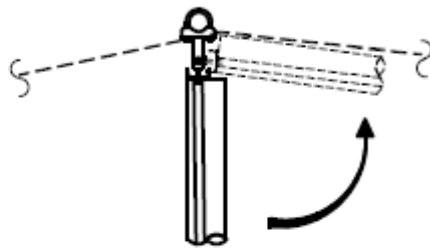
porter

Porter Athletic, Inc.
601 Mercury Drive • Champaign, IL 61822
www.porterathletic.com

LABL 00106 000

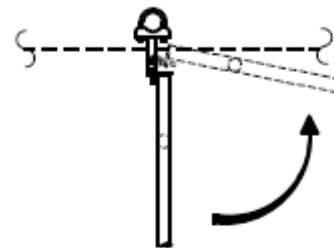
MANUAL WINCH LOCATION

IN DETERMINING THE EXACT MANUAL WINCH LOCATION, IDEALLY THE ARCHITECT OR OWNER SHOULD DETERMINE, PROVIDED IT IS IN FULL VIEW OF THE UNIT IT IS OPERATING. STRUCTURAL MEMBERS, LIGHTS, DUCTS, DRAIN PIPES, ETC., ARE POTENTIAL OBSTACLES OF THE CABLE TRAVEL REQUIRED. ALSO, EXTENSIVE CABLE TRAVEL WILL REQUIRE ADDITIONAL IDLER PULLEYS TO SUPPORT THE CABLE RUN. OF EQUAL IMPORTANCE, THE MANUAL WINCH CANNOT BE LOCATED DIRECTLY BEHIND THE UNIT ON NO. 900 LINE FORWARD FOLD BACKSTOPS. THE TOP OF THE MAST WILL SWING SIGNIFICANTLY HIGHER THAN THE CABLE, CAUSING A CABLE DRAG ACROSS THE TOP OF THE MAST OR THE MAST "C" CHANNEL (SEE FIGURE 1).



POSSIBLE CABLE DRAG ON MAST

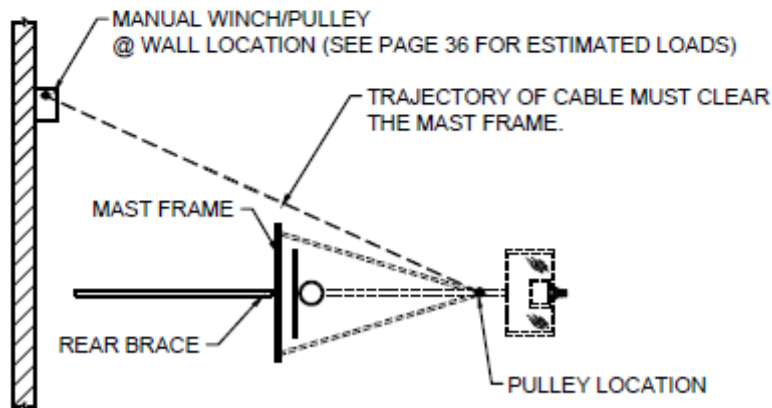
NOT RECOMMENDED



DOUBLE DROP MAST

ON DOUBLE DROP MASTS (500 AND 600 LINE), IT IS POSSIBLE TO LOCATE THE WINCH DIRECTLY BEHIND THE UNIT DUE TO THE LOWER TOP OF MAST CONFIGURATION, BUT IS NOT RECOMMENDED (SEE FIGURE 2).

IDEALLY, THE WINCH IS TO BE LOCATED OFF CENTER BEHIND THE BACKSTOP UNIT, OR ON A SIDE WALL (SEE FIGURE 3).



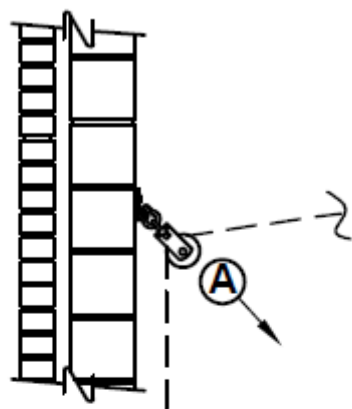
PLAN VIEW

FIGURE 3

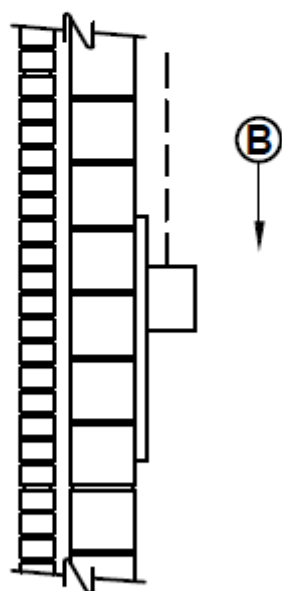
OBVIOUSLY, BACKWARD FOLD UNITS MAY HAVE THE WINCH LOCATED DIRECTLY BEHIND THE BACKSTOP UNIT.

MANUAL WINCH LOADING DIAGRAM

SHOWN IS AN APPROXIMATION, DEPENDENT UPON BACKSTOP STYLE, OPTIONS, ETC., OF THE LOADING EFFECT AT BOTH THE PULLEY AND WINCH LOCATIONS AT THE WALL.

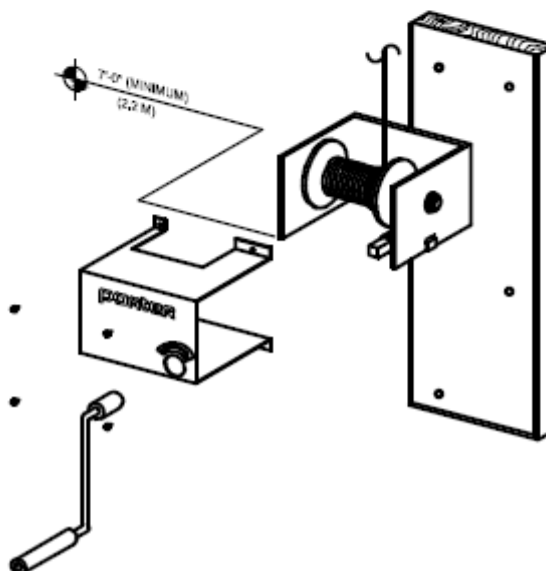
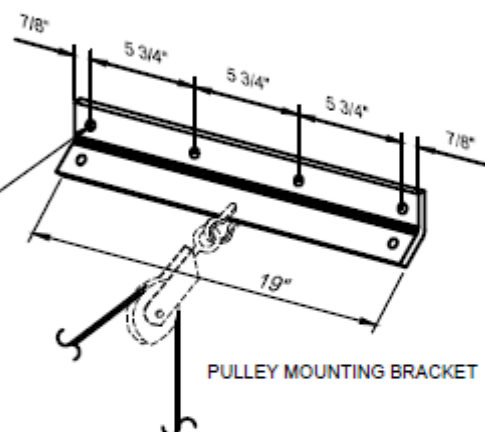


ATTACHMENT HEIGHT OF BACKSTOP	LOAD @ (A) IN LBS.	LOAD @ (B) IN LBS.
16' TO 18'	716	506
18' TO 20'	764	540
20' TO 22'	815	576
22' TO 24'	856	605
24' TO 25'	904	639



INSTALLER NOTE:

FOR STRUCTURAL INTEGRITY AND SAFETY OF THIS ATTACHMENT IT IS RECOMMENDED THAT THIS ASSEMBLY BE THRU BOLTED TO A LOAD BEARING WALL WITH A MINIMUM OF TWO (2) 1/2" DIA. BOLTS AND BUILDING WASHERS.





WARNING

READ ALL WARNINGS THOROUGHLY BEFORE USING THIS EQUIPMENT.

FAILURE TO COMPLY WITH THE FOLLOWING INSTRUCTIONS AND WARNINGS MAY RESULT IN SERIOUS INJURIES AND/OR PROPERTY DAMAGE.

This manual winch develops tremendous forces. Therefore, all backstops and divider curtains should be operated only by qualified personnel, to avoid structural damage or possible injury to the operator and other individuals in the gymnasium.

Caution should be taken at all times for safety reasons, keeping the following guidelines in mind:

1. This winch is to be operated only by a trained adult.
2. Keep the area under the backstop or divider curtain (floor and bleachers) clear of all individuals when raising or lowering the units.
3. Stop upward travel of backstop or divider curtain **BEFORE** contact with ceiling or support structure occurs.
4. Do **NOT** allow cable to become slack.
5. Operating handles or portable electric winch operators must be in the possession of responsible, trained personnel at all times.
6. Periodically inspect winch, cable, pulleys, safety straps, and all attachment points of stress for any signs of looseness, wear or fatigue. Repair or replace immediately.
7. Inspect gear set every 3 to 4 months; and lubricate gears liberally with Pyroshield® #5182 grease.
8. IMPORTANT – Drive shaft must turn clockwise (as shown on label) when backstop or divider curtain is being hoisted, in order to place thrust against roller bearing. **OPERATING THIS WINCH IN REVERSE WILL CREATE BINDING, UNDUE WEAR, AND POSSIBLE WINCH FAILURE.**
9. It is highly recommended that a safety strap mechanism be used on any backstop or divider curtain that operates over a spectator bleacher. Consult factory or your local Porter dealer for details, if this unit was not included on the original installation.

THE OWNER OF THIS EQUIPMENT IS RESPONSIBLE TO ENSURE THAT ALL INDIVIDUALS FOLLOW THESE SAFETY AND OPERATING INSTRUCTIONS TO AVOID INJURIES OR PROPERTY DAMAGE. PROPER USE AND SUPERVISION OF THIS EQUIPMENT IS ESSENTIAL TO HELP REDUCE THE POSSIBILITY OF ACCIDENTS OR INJURIES.



WARNING

IMPROPER USE, INSPECTION OR MAINTENANCE OF THIS EQUIPMENT IS DANGEROUS AND COULD RESULT IN STRUCTURAL DAMAGE TO EQUIPMENT, AND/OR SERIOUS INJURY, PARALYSIS OR DEATH TO THOSE IN THE VICINITY OF THE EQUIPMENT.



WARNING

Use of Porter winches on products other than basketball backstops and gymnasium divider curtains is **EXPRESSLY PROHIBITED.**

MAINTENANCE

Inspect this winch every three to four months. Check the gears for excessive wear or binding. Replace worn or defective parts as necessary. Lubricate gears liberally, with Pyroshield® #5182 grease.

THIS WARNING IS GIVEN IN COMPLIANCE
WITH CALIFORNIA'S PROPOSITION 65:

WARNING

This product contains chemicals known to the
State of California to cause cancer, birth defects
or other reproductive harm.

porter

601 Mercury Drive, Champaign, IL U.S.A. 61822
www.porterathletic.com
(888) 277-7778

SAVE THESE INSTRUCTIONS FOR FUTURE USE