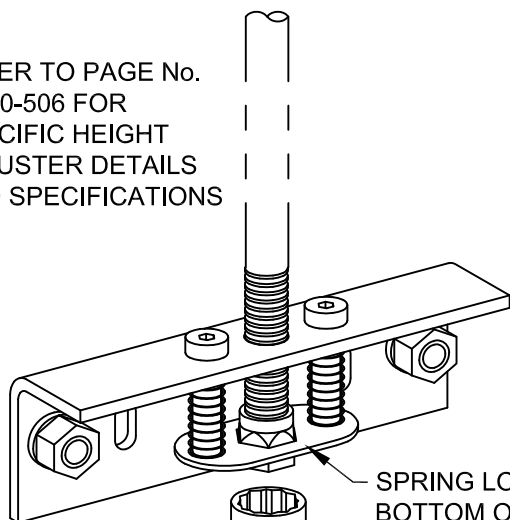


B-900-259 - PORTABLE OPERATOR KIT

PORTABLE OPERATOR KIT FOR PORTER MANUAL HEIGHT ADJUSTERS

PARTS LIST			
No.	QTY.	DESCRIPTION	
1	1	ELEC 00226 000	CORDLESS DRILL W/ BATTERIES AND CHARGER
2	1	XCRK 90000 208	ADAPTER WITH SOCKET

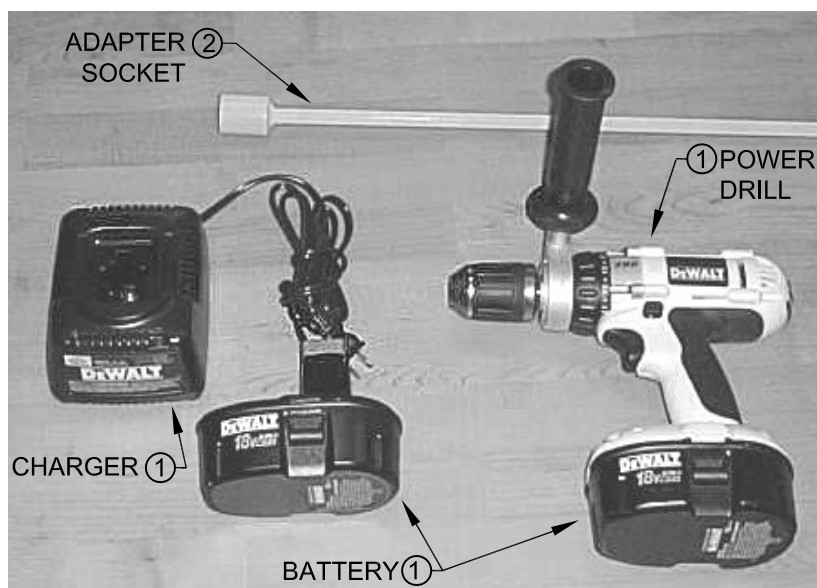
REFER TO PAGE No.
B-900-506 FOR
SPECIFIC HEIGHT
ADJUSTER DETAILS
AND SPECIFICATIONS



SPRING LOADED HEIGHT LOCK ON
BOTTOM OF PORTER HEIGHT ADJUSTER

POWER DRILL SOCKET
ADAPTER ②

TO POWER DRILL



- 00900-259 PORTABLE HEIGHT ADJUSTER OPERATOR KIT

Porter®

888-277-7778 PORTER@PORTERATHLETIC.COM
© COPYRIGHT 2014 PORTER ATHLETIC - ALL RIGHTS RESERVED

PROJECT NUMBER

PROJECT NAME

Porter

WWW.PORTERATHLETIC.COM/FACILITY

PORTABLE OPERATOR KIT SPECIFICATION SHEET

B-900-259

4/15/2014

B-900-259 - PORTABLE OPERATOR KIT

PORTABLE OPERATOR KIT FOR PORTER MANUAL HEIGHT ADJUSTERS

SPECIFICATIONS

PORTER No. 00900-259 PORTABLE OPERATOR KIT FOR PORTER MANUAL HEIGHT ADJUSTMENT UNITS

Portable operator kit shall consist of a hand-held, battery-powered cordless drill type unit with a special adapter socket extension assembly, to operate manual-type height adjustment units while standing on the floor.

Cordless operator shall be UL® Listed (406A), high-torque (355 inch/pounds) hand-held unit with an adjustable safety-type clutch mechanism, and a maximum operating speed of 450 R.P.M. Unit shall be of a non-slip, center grip type design with an auxiliary side handle for added operating stability. Operator shall be furnished with two battery packs, a battery charger, and plastic carrying case. Each battery pack shall have a one-hour recharge time.

Adapter socket extension assembly shall consist of a 7/16" hex steel shaft (5'-0" long) with a 15/16" hex socket for operating Porter, direct-mount type manual height adjusters. Extension assembly shall be finished in a durable gray powder-coated finish.

CAUTION!

Use of standard power drill units to operate Porter manual height adjusters will void all equipment warranties and may cause bodily injuries.

Porter
WWW.PORTERATHLETIC.COM/FACILITY

PORTABLE OPERATOR KIT SPECIFICATION SHEET

B-900-259