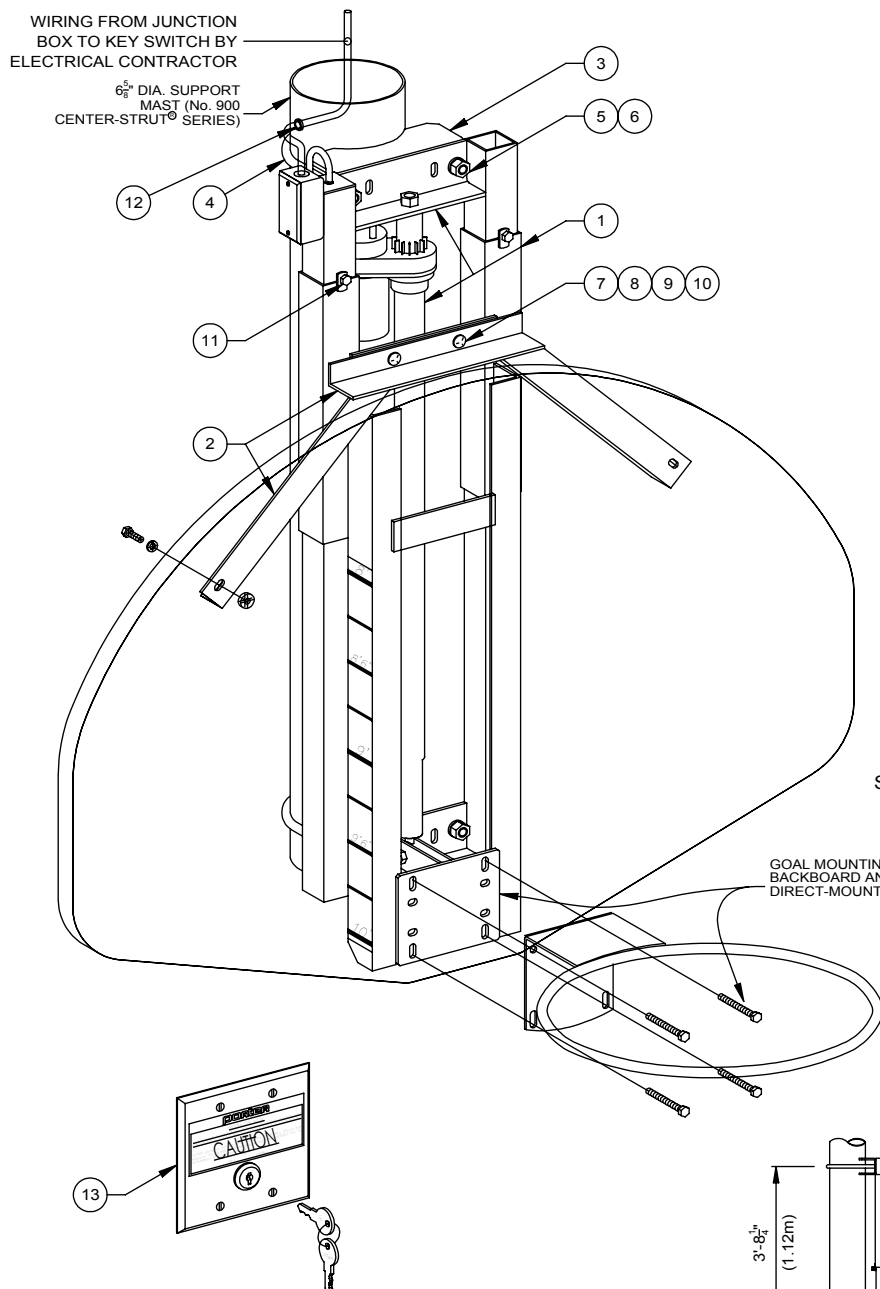


00901211 - CENTER-STRUT HEIGHT ADJUSTER

KEY SWITCH OPERATION FOR FAN BACKBOARD NO. 216, NO. 267A FIBERGLASS, NO. 234 OR NO. 234A ALUMINUM



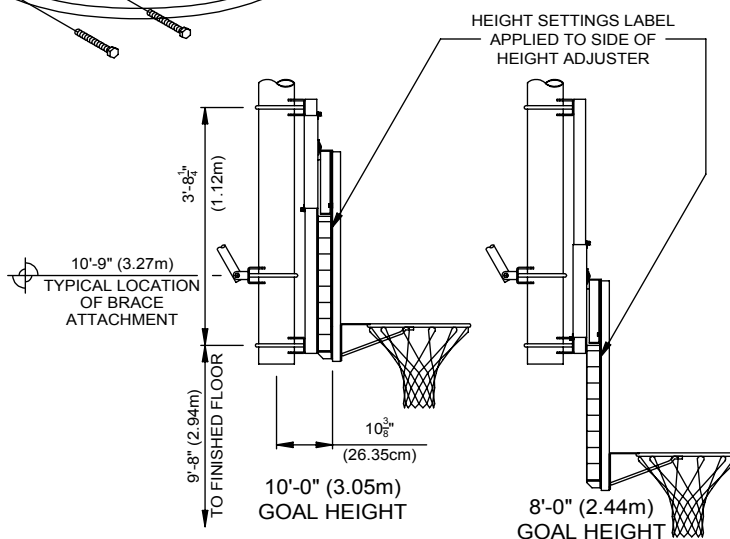
| PARTS LIST | | | |
|------------|------|--------------|--|
| NO. | QTY. | PART NO. | DESCRIPTION |
| 1 | 1 | FRME00213002 | HEIGHT ADJUSTER ASSEMBLY |
| 2 | 1 | FRME0020202 | FAN BACKBOARD SUPPORT |
| 3 | 2 | CLMP0056002 | MAST CLAMP |
| 4 | 2 | UBOT000060E2 | 5/8" U-BOLT |
| 5 | 4 | HDWE04006000 | 5/8" LOCKWASHER |
| 6 | 4 | HDWE03012000 | 5/8" HEX NUT |
| 7 | 2 | HDWE020130E0 | 3/8" x 1 ¹ / ₄ " LG. CARRIAGE BOLT (GRADE 5) |
| 8 | 2 | HDWE050040E0 | 3/8" FLATWASHER |
| 9 | 2 | HDWE040020E0 | 3/8" LOCKWASHER |
| 10 | 2 | HDWE030020E0 | 3/8" HEX NUT |
| 11 | 4 | HDWE01134000 | 3/8" x 1/2" LG. NYLON BOLT |
| 12 | 1 | BUSH00069002 | PLASTIC BUSHING |
| 13 | 1 | ELEC00086000 | KEY SWITCH ASSEMBLY |

WARNING
SUBSTITUTION OF THIS KEY SWITCH WILL VOID ALL WARRANTIES AND WILL RENDER THE OPERATION OF THE HEIGHT ADJUSTER UNSAFE.

CAUTION
KEY SWITCH MUST BE MOUNTED ON THE WALL IN A LOCATION SO THAT THE EQUIPMENT IT IS CONTROLLING IS IN FULL VIEW OF THE OPERATOR

SEE PAGE No. B-901-K FOR FIELD WIRING DETAILS AND REQUIREMENTS

FLUSH MOUNTED-TYPE SWITCH FURNISHED WITH DUAL (UP-DOWN) KEY OPERATION MOUNTED IN A STAINLESS STEEL COVER PLATE. WIRING DIAGRAM PROVIDED WITH EACH UNIT. KEY SWITCHES MAY BE GANGED IN PAIRS IN ONE COVER PLATE - ONE FOR THE BACKSTOP, ONE FOR THE HEIGHT ADJUSTER.



00901211 KEY SWITCH OPERATION FOR FAN BACKBOARD

00901211 - CENTER-STRUT HEIGHT ADJUSTER

KEY SWITCH OPERATION FOR FAN BACKBOARD
NO. 216, NO. 267A FIBERGLASS, NO. 234 OR NO. 234A ALUMINUM

SPECIFICATIONS

Height adjustment unit shall be designed for use with No. 900 Center-Strut® series ceiling suspended basketball backstop support systems to provide an adjustable, direct-mount (Center-Strut®) goal attachment system to eliminate any strain on the backboard should a player hang on the front mounted goal (conforms to the latest NCAA recommendation). Height adjustment units without the prescribed direct-mount goal feature will not be approved as equal. Height adjustment feature will allow goal height settings from 8'-0" to the official 10'-0" for use by all age groups. Unit shall be designed for use only with Porter No. 00261000 rectanuglar fiberglass, Porter No. 267A fan fiberglass or No. 234 or 234A fan aluminum backboards.

Center unitized support frame shall be fabricated by dual, 2-3/16" square heavy-wall zinc plated guide tubes located on 11-3/16" centers. Ends of guide tubes shall be welded to heavy, formed mounting brackets. Heavy formed, die cut steel clamp assemblies (2) shall be provided for securing height adjustment assembly directly to a 6-5/8" O.D. center support structure (No. 900 Center-Strut® series basketball backstops). Outer dual slide tubes shall support heavy structural steel angle sections which extend downward to accept a direct-mount (Center-Strut®) goal mounting system. Slide tube assembly shall be provided with a heavy steel section to attach a special upper backboard support assembly to secure the unit to the upper two corners of the fan shaped backboard on standard (2'-11") mounting centers.

Height adjustment unit shall incorporate a compact 115-volt, gear motor type linear actuator with 600 pound thrust capacity to raise and lower the goal height electrically. Motor shall draw 1.4 amps under full load. Integral limit switches shall provide automatic shut off at 8' and 10' goal heights. The motor shall be controlled by a special dual keyed, flush wall-mounted momentary key switch. Switch assembly shall be furnished with a 4-1/2" square stainless steel cover plate for mounting in a masonry wall box by the electrical contractor. (Key switches may be ganged in pairs in one cover plate to control the actuator and the backstop winch - specify requirements). Wiring from junction box on height adjuster frame to key switch shall be provided by the electrical contractor to meet all local code requirements.

Wiring of all electrical components shall be in accordance with local area codes, and in accordance with manufacturer's instructions. All conduit, wiring, junction boxes and components not specified herein shall be furnished and installed by the electrical contractor.

A height setting scale shall be located on the side of the unit to visually determine height settings from 8'-0" to 10'-0" in 3" increments.

Height adjustment frame shall be finished with one coat of flat black enamel. Hardware shall be furnished for mounting unit to a 6-5/8" O.D. vertical support tube.

WARRANTY

- Height Adjusters furnished with a 1-year limited warranty.