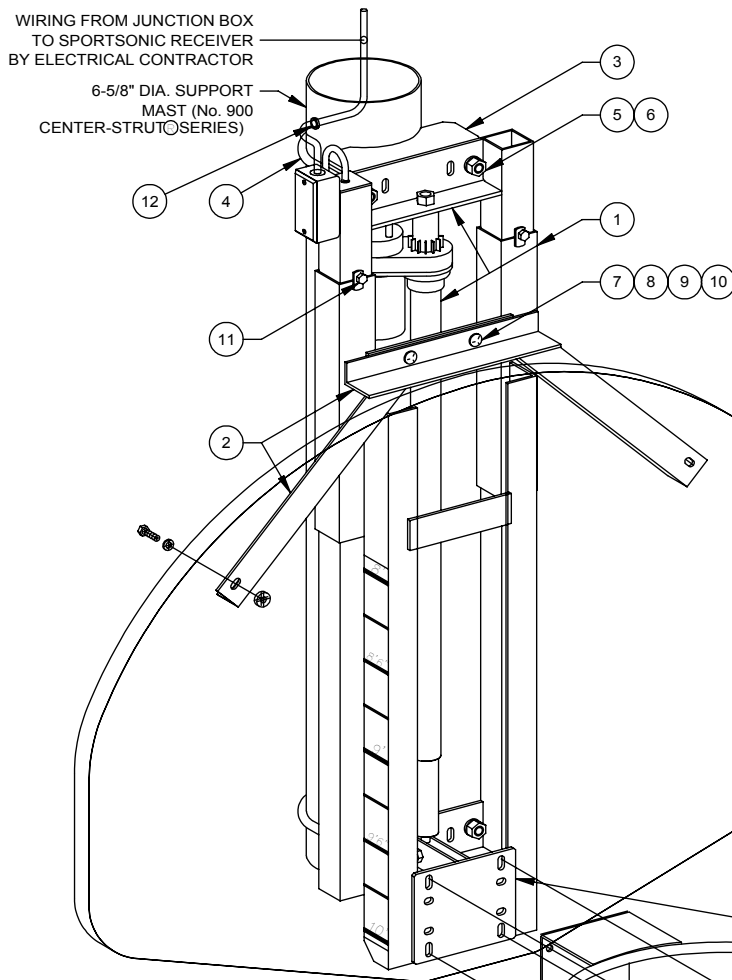


# 00903211 - CENTER-STRUT HEIGHT ADJUSTER

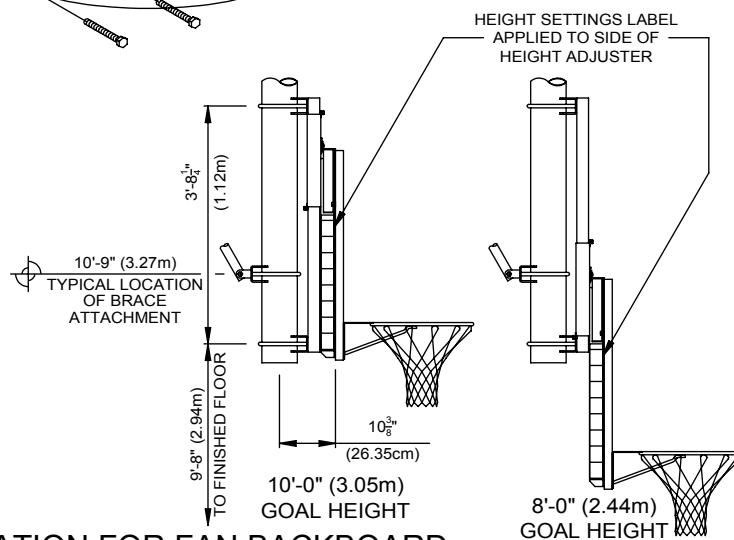
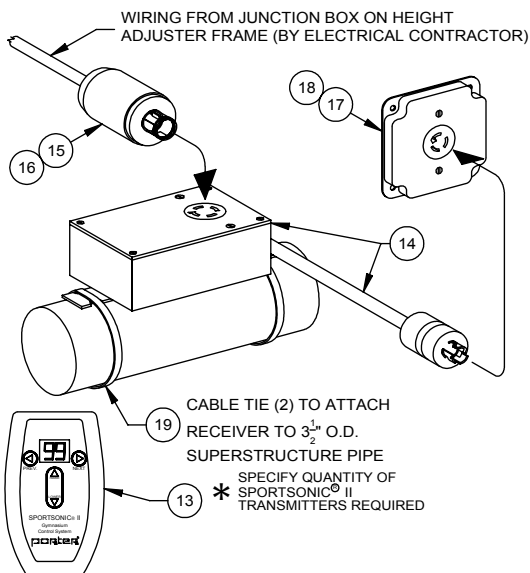
## SPORTSONIC II OPERATION FOR FAN BACKBOARD NO. 216, NO. 267A FIBERGLASS, NO. 234 OR 234A ALUMINUM



PARTS LIST			
NO.	QTY.	PART NO.	DESCRIPTION
1	1	FRME00213002	HEIGHT ADJUSTER ASSEMBLY
2	1	FRME0020202	FAN BACKBOARD SUPPORT
3	2	CLMP0056002	MAST CLAMP
4	2	UBOT000060E2	5/8" U-BOLT
5	4	HDWE04006000	5/8" LOCKWASHER
6	4	HDWE03012000	5/8" HEX NUT
7	2	HDWE020130E0	3/8" x 1 1/4" LG. CARRIAGE BOLT (GRADE 5)
8	2	HDWE050040E0	3/8" FLATWASHER
9	2	HDWE040020E0	3/8" LOCKWASHER
10	2	HDWE030020E0	3/8" HEX NUT
11	4	HDWE01134000	3/8" x 1/2" LG. NYLON BOLT
12	1	BUSH00069002	PLASTIC BUSHING
13		12002100	SPORTSONIC II TRANSMITTER
14	1	XELC12002200	SPORTSONIC II RECEIVER
15	1	ELEC00013100	4-PRONG TWIST-LOCK PLUG
16	1	ELEC00140000	STRAIN RELIEF INSERT
17	1	ELEC00064000	3-PRONG TWIST-LOCK RECEPTACLE
18	1	ELEC001260G0	1/2" DEEP COVER PLATE
19	2	ELEC00221002	CABLE TIE 14" LG.

SEE PAGE No. B-903-S FOR FIELD WIRING  
DETAILS AND REQUIREMENTS

GOAL MOUNTING HARDWARE EXTENDS THROUGH  
BACKBOARD AND CENTER-STRUT TO PROVIDE  
DIRECT-MOUNT CENTER-STRUT® FEATURE



- 00903211 SPORTSONIC II OPERATION FOR FAN BACKBOARD  
- NUMBER OF SPORTSONIC II TRANSMITTERS REQUIRED

# 00903211 - CENTER-STRUT HEIGHT ADJUSTER

SPORTSONIC II OPERATION FOR FAN BACKBOARD  
NO. 267A FIBERGLASS, NO. 234 OR 234A ALUMINUM

## SPECIFICATIONS

Height adjustment unit shall be designed for use with No. 900 Center-Strut® series ceiling suspended basketball backstop support systems to provide an adjustable, direct-mount (Center-Strut®) goal attachment system to eliminate any strain on the backboard should a player hang on the front mounted goal (conforms to the latest NCAA recommendation). Height adjustment units without the prescribed direct-mount goal feature will not be approved as equal. Height adjustment feature will allow goal height settings from 8'-0" to the official 10'-0" for use by all age groups. Unit shall be designed for use only with Porter No. 000216000 rectangular fiberglass, Porter No. 267A fan fiberglass or No. 234 or No. 234A fan aluminum backboards.

Center unitized support frame shall be fabricated by dual, 2-3/16" square heavy-wall zinc plated guide tubes located on 11-3/16" centers. Ends of guide tubes shall be welded to heavy, formed mounting brackets. Heavy formed, die cut steel clamp assemblies (2) shall be provided for securing height adjustment assembly directly to a 6-5/8" O.D. center support structure (No. 900 Center-Strut® series basketball backstops). Outer dual slide tubes shall support heavy structural steel angle sections which extend downward to accept a direct-mount (Center-Strut®) goal mounting system. Slide tube assembly shall be provided with a heavy steel section to attach a special upper backboard support assembly to secure the unit to the upper two corners of the fan shaped backboard on standard (2'-11") mounting centers.

Height adjustment unit shall incorporate a compact 115-volt, gear motor type linear actuator with 600 pound thrust capacity to raise and lower the goal height electrically. Motor shall draw 1.4 amps under full load. Integral limit switches shall provide automatic shut off at 8' and 10' goal heights. The motor shall be controlled by Sportsonic® II radio control system. Sportsonic II® portable hand-held transmitter No. 12002100 will operate up to 99 individual units. One transmitter can be made to operate height adjustment units, in addition to backstop and divider curtain winches. Power supply for transmitter shall be a standard 9-volt battery. Transmitter shall operate on a carrier frequency of 315 MHz.

Each electric height adjuster shall be equipped with a commercial type 115 VAC receiver with a coding switch for individual operation by the portable transmitter. Receiver shall be factory wired and installed in a standard non-metallic enclosure (6" x 4" x 2-3/8") with a 6'-0" long SJT cord with a NEMA L5-15 molded twist-lock grounded plug attached. Matching flange type receptacle shall be mounted in a standard 4" square cover plate (box by others) for power supply. Wiring from junction box on height adjuster frame to receiver shall be provided by the electrical contractor to meet all local code requirements. Enclosure shall be furnished with a 4-pole twist-lock grounded type NEMA L14-20 receptacle to accept the power/control cable from the linear actuator.

All units to be factory tested for a 100' (nominal) operating range. Coding switch shall be configured in field for independent operation.

Wiring of all electrical components shall be in accordance with local area codes, and in accordance with manufacturer's instructions. All conduit, wiring, junction boxes and components not specified herein shall be furnished and installed by the electrical contractor.

A height setting scale shall be located on the side of the unit to visually determine height settings from 8'-0" to 10'-0" in 3" increments.

Height adjustment frame shall be finished with one coat of flat black enamel. Hardware shall be furnished for mounting unit to a 6-5/8" O.D. vertical support tube.

## WARRANTY

- Height Adjusters furnished with a 1-year limited warranty.