

90926000 - STATIONARY BACKSTOP

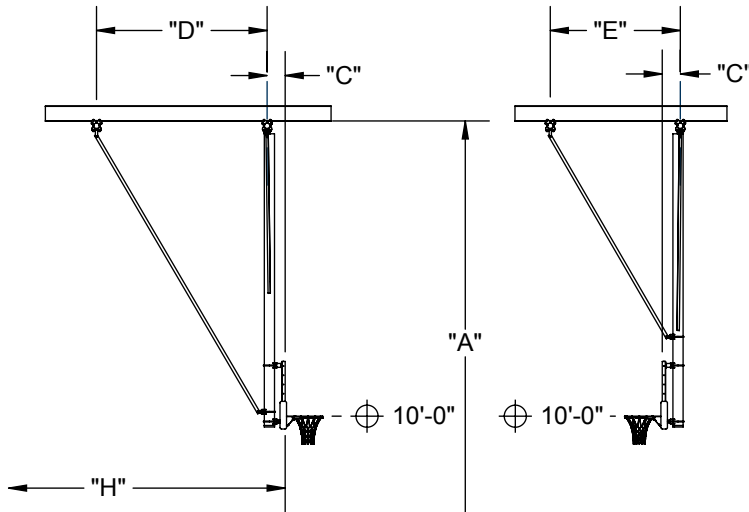
CEILING SUSPENDED, STATIONARY UNIT
16' TO 28' ϕ OF MAST PIPE TO FINISHED FLOOR

PRECISION DIE-FORMED SUPPORT FITTING STANDARD
(MAY VARY BASED ON GYMNASIUM SUPERSTRUCTURE)

GYMNASIUM SUPERSTRUCTURE
(SHOWN FOR REPRESENTATION
PURPOSES ONLY, MAY VARY)

$\phi 3\frac{1}{2}$ " O.D. PIPE STANDARD
(SUPERSTRUCTURE ENGINEERED PER BUILDING REQUIREMENTS)

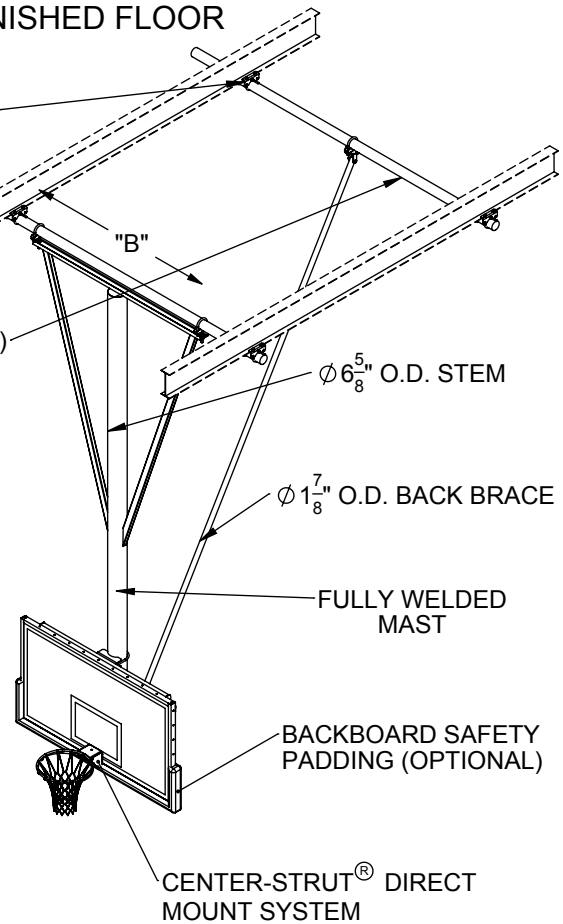
FRONT OR BACK BRACED AVAILABLE



SEE CHART BELOW FOR DIMENSIONS

"A" BOTTOM OF STRUCTURE ABOVE FINISHED FLOOR	"B" MAST CENTERS	"C" FACE OF BACKBOARD TO ϕ MAST HANGER	"D" BACK BRACE DIMENSION	"E" FRONT BRACE DIMENSION (WITHIN 6" \pm)	"H" MINIMUM FACE OF BACKBOARD TO WALL
16'-0" to 17'-0"	4'-0"	SEE "C" DIMENSION CHART	3'-11"	2'-6"	4'-8"
17' 0-1/8" to 18'-0"	4'-0"		4'-6"	3'-4"	5'-1"
18' 0-1/8" to 19'-0"	5'-0"		5'-0"	4'-2"	5'-7"
19' 0-1/8" to 20'-0"	5'-0"		5'-8"	5'-0"	6'-0"
20' 0-1/8" to 21'-0"	5'-6"		6'-2"	5'-10"	6'-6"
21' 0-1/8" to 22'-0"	5'-6"		6'-9"	6'-9"	7'-0"
22' 0-1/8" to 23'-0"	6'-0"		7'-4"	7'-7"	7'-5"
23' 0-1/8" to 24'-0"	6'-0"		7'-1"	8'-5"	7'-11"
24' 0-1/8" to 25'-0"	6'-6"		8'-6"	9'-3"	8'-5"
25' 0-1/8" to 26'-0"	6'-6"		9'-1"	10'-0"	8'-10"
26' 0-1/8" to 27'-0"	7'-0"		9'-8"	10'-11"	9'-4"
27' 0-1/8" to 28'-0"	7'-0"		10'-3"	11'-9"	9'-9"

*OPTIMUM DIMENSION GIVEN; SEE DIMENSION "H" FOR MINIMUM REQUIREMENTS



"C" DIMENSION CHART- FACE OF BACKBOARD TO CENTERLINE OF MAST HANGER			
BACKBOARD MODEL NUMBER	DESCRIPTION	WITHOUT HEIGHT ADJUSTER	WITH HEIGHT ADJUSTER
208	RECTANGULAR GLASS	11-5/8"	14-3/16"
216	RECTANGULAR FIBERGLASS	11-3/8"	13-15/16"
234A	FAN ALUMINUM	10-13/16"	13-3/8"
267A	FAN FIBERGLASS	10-3/4"	13-5/16"

*UNITS UNDER 20' BOTTOM OF STRUCTURE
REQUIRE 3 $\frac{1}{2}$ " ADDITIONAL OFFSET

_____ - 90926000 CEILING SUSPENDED, STATIONARY UNIT
 _____ - BACKBOARD SELECTION
 _____ - GOAL SELECTION
 _____ - PADDING SELECTION

90926000 - STATIONARY BACKSTOP

CEILING SUSPENDED, STATIONARY UNIT
16' TO 28' \varnothing OF MAST PIPE TO FINISHED FLOOR

SPECIFICATIONS

Basketball backstop shall consist of a main center mast of 6-5/8" O.D. heavy-wall structural steel tube with diagonal side sway braces of 2-1/2" x 1-1/2" rectangular steel tubing. Ends of diagonal brace tubes shall be fully welded to main mast. Top horizontal mast member to be of a heavy 4" structural channel to support adjustable suspension hangers. Mast shall be fully welded and suspended by adjustable hangers (2) to provide for precise plumbing of frame during installation.

Goal shall mount directly through backboard and into a heavy structural steel Center-Strut® weldment which shall be clamped to the vertical 6-5/8" O.D. center support to eliminate any strain on backboard should a player hang on the front mounted goal (conforms to the NCAA latest rules). All fittings shall be attached to the 6-5/8" O.D. vertical drop tube by heavy 1/4" thick precision saddle die-cut formed steel fittings secured in place by 5/8" diameter 'U'-Bolt type hardware.

Welded mast to be supported in a fixed playing position with a single 1-7/8" O.D. diagonal back brace mounted to superstructure pipe.

Backstop shall be supported from pipe anchored to roof framing members by precision die formed support fittings or custom attachments as required. All cap screws shall be rated a minimum SAE Grade 5. Grade 2 cap screws will not be approved as equal. Bridged pipes may be required when spans exceed 14'.

All metal parts shall be powder coated. See swatch card SMPL00048037 for standard color options. (contact Porter for custom color requests)

Backstop provided with specified backboard and goal (see B-200 for options).

WARRANTY

- No. 900 Center-Strut® series backstop structure comes with a 25 year limited warranty.
- Limited Lifetime warranty on all Porter backboards when used in conjunction with the No. 900 Center-Strut® series backstop.
- Other components may be covered by their own warranty (see corresponding specifications for more details).

OPTIONAL ITEMS (SEE SPECIFICATION SHEETS FOR DETAIL)

- Backboard safety padding (see B-200)
- Height Adjuster (8' to 10' adjustable goal height) (see chart below)

CENTER-STRUT® HEIGHT ADJUSTER

- | | |
|---|---|
| • For Manual Operation, See Page No.: | B-900-506 (Rectangular Boards) B-900-211 (Fan Boards) |
| • For Key Switch Operation, See Page No.: | B-901-506 (Rectangular Boards) B-901-211 (Fan Boards) |
| • For Powr-Stick Operation, See Page No.: | B-902-506 (Rectangular Boards) B-902-211 (Fan Boards) |
| • For Sportsonic® II Operation, See Page No.: | B-903-506 (Rectangular Boards) B-903-211 (Fan Boards) |
| • For Powr-Touch Operation, See Page No.: | B-904-506 (Rectangular Boards) B-904-211 (Fan Boards) |

LEED® SUBMITTAL INFORMATION

Credit	Measure
MRc4-Recycled Content	Post Consumer Average 25.0% Post Industrial 0%
MRc5-Regional Materials	Raw materials originate from multiple sources so origin point cannot be determined. Final Manufacturing/Assembly in Champaign, IL 61822

CERTIFICATIONS

- Certified by the NCAA and NFHS