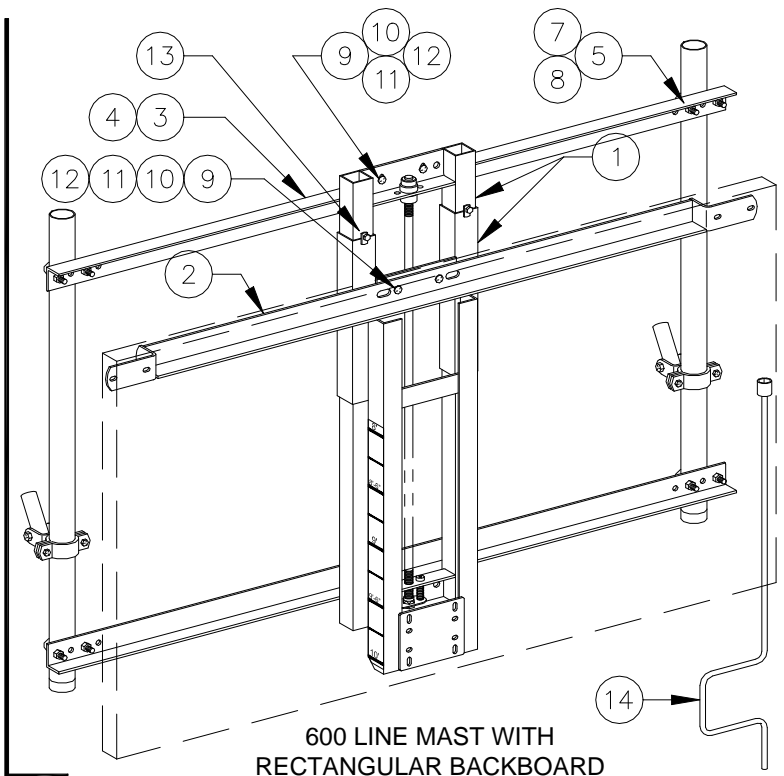
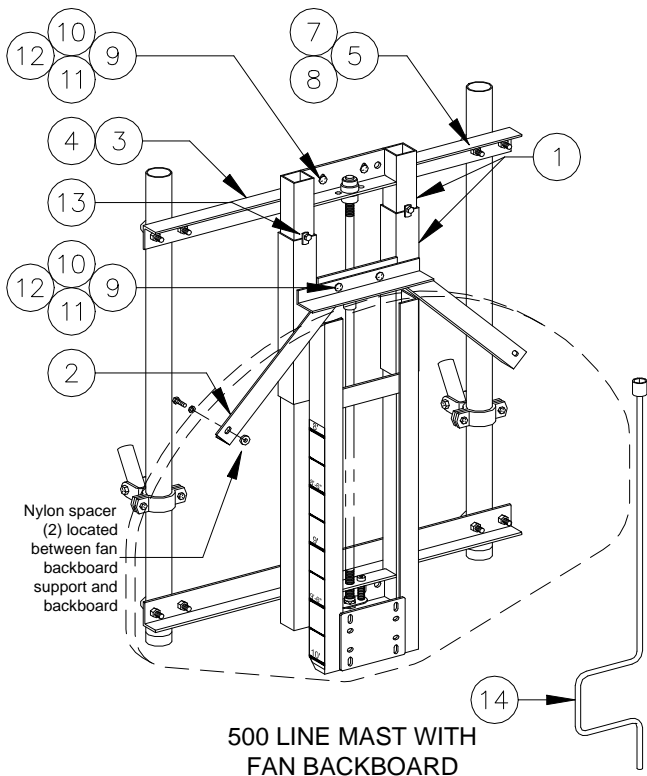


## ASSEMBLY, INSTALLATION & MAINTENANCE INSTRUCTIONS

### *CENTER-STRUT® HEIGHT ADJUSTMENT UNITS*

#### *MANUAL OPERATION*

*No. 00500-211 and 00600-506*



PARTS LIST - No. 00500-211

ITEM	QTY.	PART NUMBER	DESCRIPTION
1	1	FRME 00162 002	HEIGHT ADJUSTER ASSEMBLY
2	1	FRME 00202 002	FAN BACKBOARD SUPPORT
3	2	ANGL 00191 002	SPAN ANGLE - 3'-4" Lg.
4	2	ANGL 00190 002	MOUNTING ANGLE - 9" Lg.
5	4	UBOT 00007 000	U-BOLT
6	4	HDWE 01154 0P0	1/2" x 1 1/4" Lg. HEX HD. CAP SCREW (Grade 5)
7	12	HDWE 04003 0E0	1/2" LOCKWASHER
8	12	HDWE 03003 0E0	1/2" HEX NUT
9	6	HDWE 02073 0P0	3/8" x 1 1/4" Lg. CARRIAGE BOLT (Grade 5)
10	6	HDWE 05004 0E0	3/8" FLATWASHER
11	6	HDWE 04002 0E0	3/8" LOCKWASHER
12	6	HDWE 03002 0E0	3/8" HEX NUT
13	4	HDWE 01134 000	3/8" x 1/2" Lg. NYLON BOLT
14	→	XCRK 90000 102	HEIGHT ADJUSTER CRANK (1 per 2 Units)

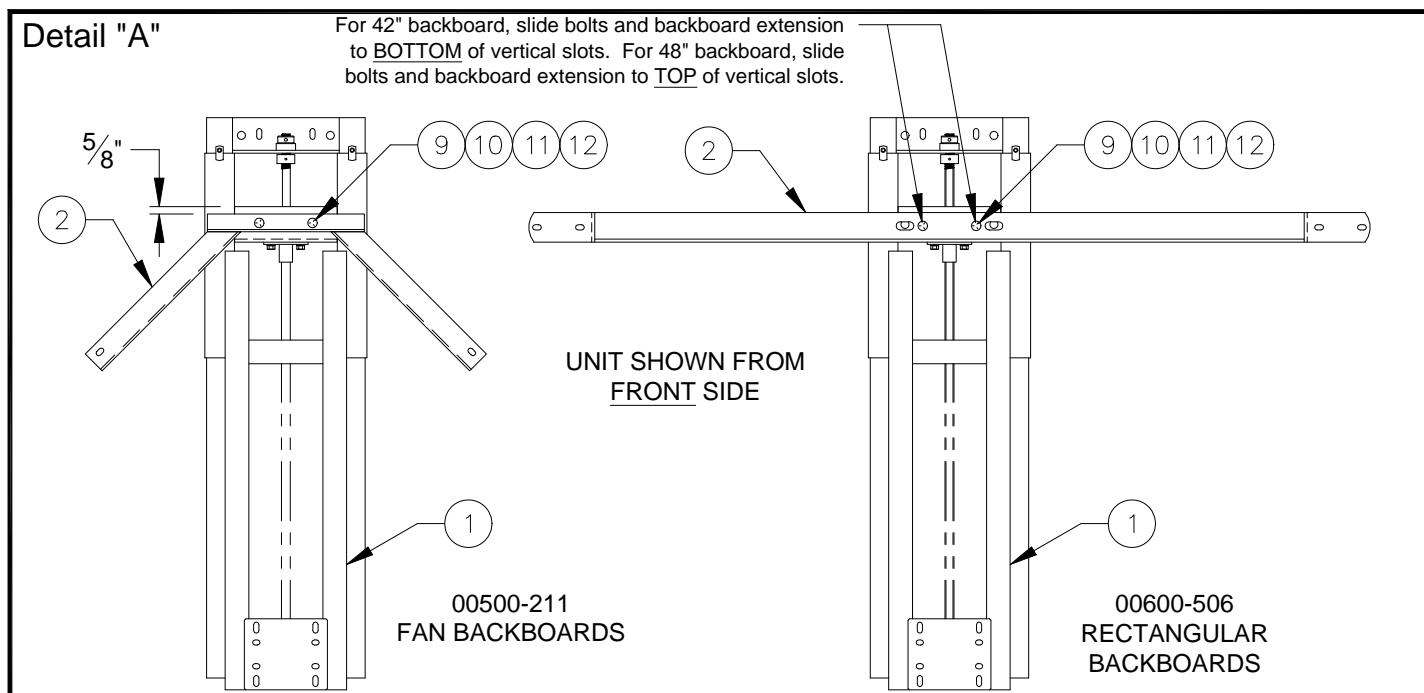
PARTS LIST - No. 00600-506

ITEM	QTY.	PART NUMBER	DESCRIPTION
1	1	FRME 00162 002	HEIGHT ADJUSTER ASSEMBLY
2	1	XEXT 91612 002	RECT. BACKBOARD EXTENSION
3	2	ANGL 00189 002	SPAN ANGLE - 6'-2" Lg.
4	2	ANGL 00190 002	MOUNTING ANGLE - 9" Lg.
5	4	UBOT 00007 000	U-BOLT
6	4	HDWE 01154 0P0	1/2" x 1 1/4" Lg. HEX HD. CAP SCREW (Grade 5)
7	12	HDWE 04003 0E0	1/2" LOCKWASHER
8	12	HDWE 03003 0E0	1/2" HEX NUT
9	6	HDWE 02073 0P0	3/8" x 1 1/4" Lg. CARRIAGE BOLT (Grade 5)
10	6	HDWE 05004 0E0	3/8" FLATWASHER
11	6	HDWE 04002 0E0	3/8" LOCKWASHER
12	6	HDWE 03002 0E0	3/8" HEX NUT
13	4	HDWE 01134 000	3/8" x 1/2" Lg. NYLON BOLT
14	→	XCRK 90000 102	HEIGHT ADJUSTER CRANK (1 per 2 Units)

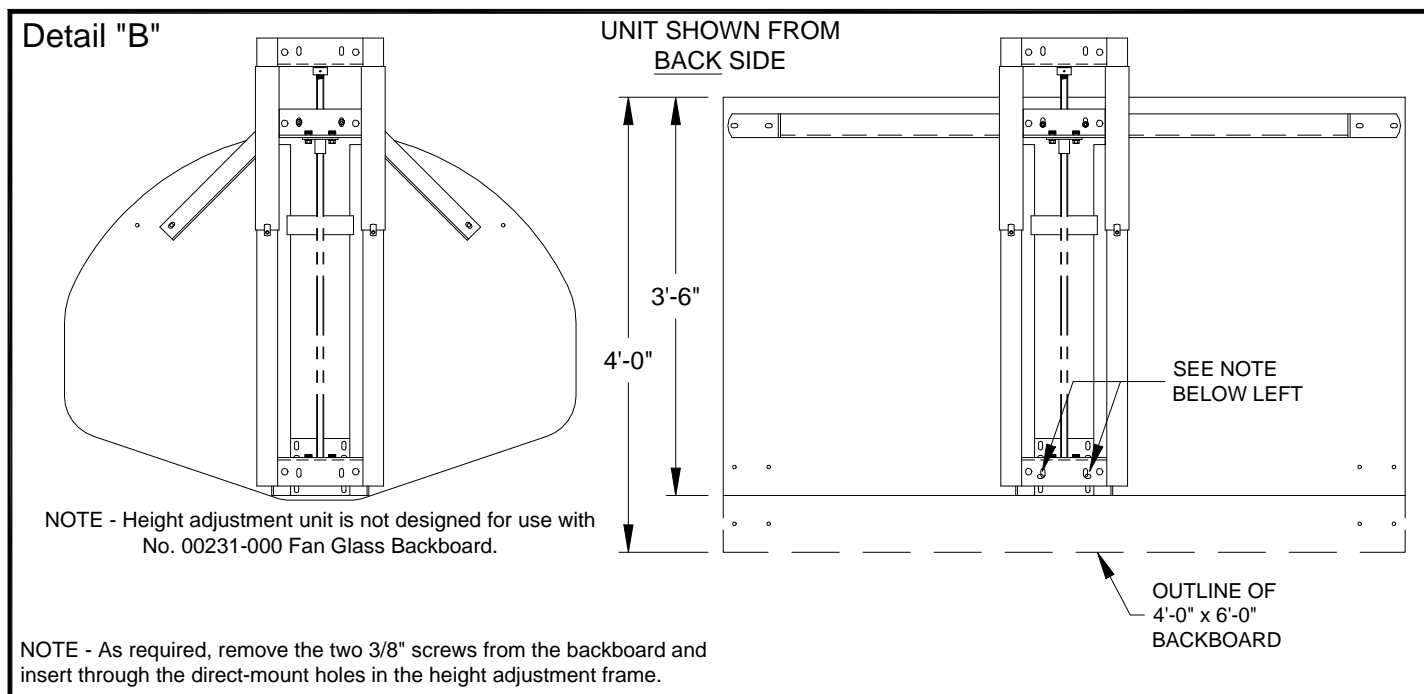
Patent No's. 5,279,496; 5,462,269; 6,056,654; 6,537,162. Other patents pending.

**SAVE THESE INSTRUCTIONS FOR FUTURE USE**

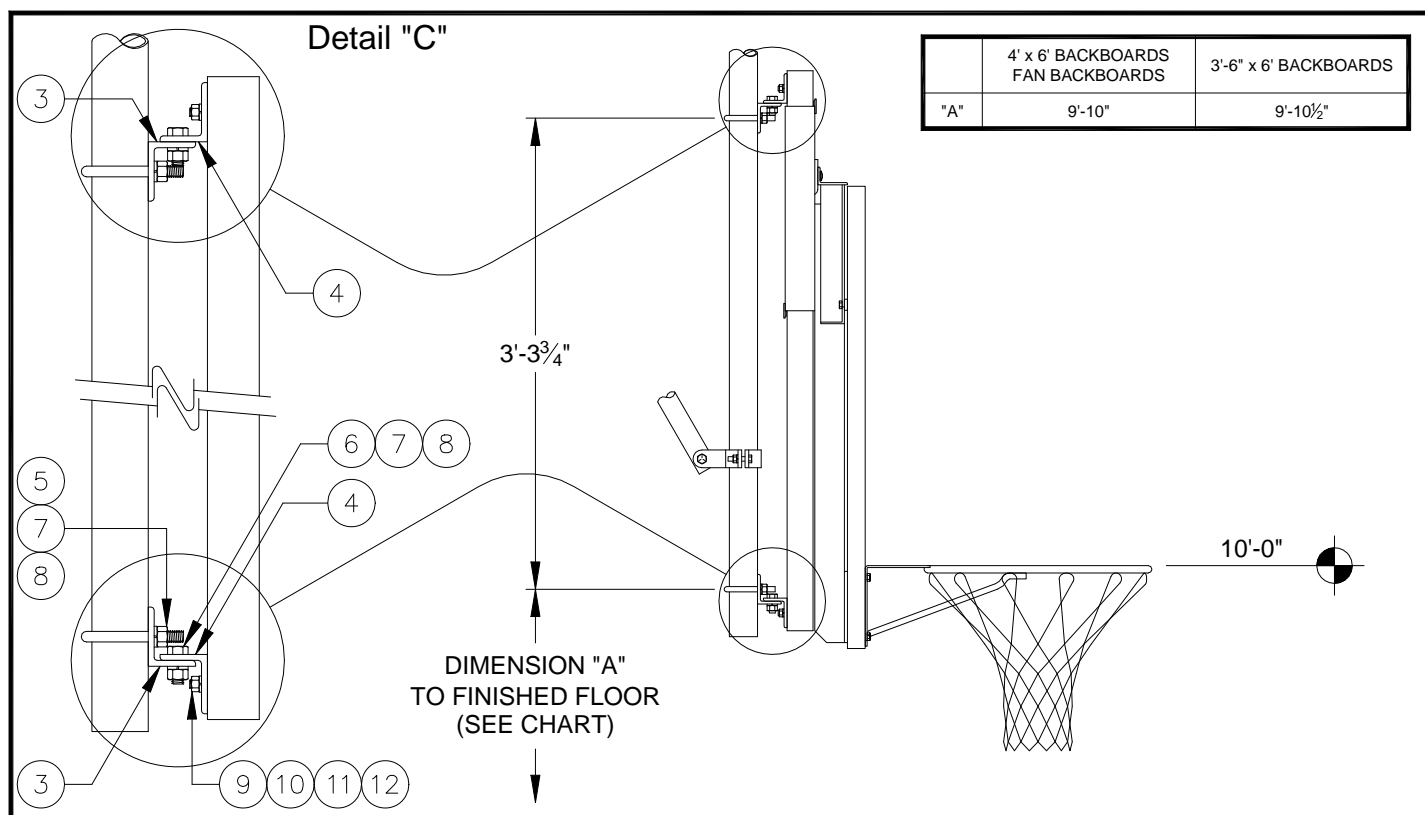
1. Unpack height adjustment unit and check all items against Parts Lists on Page 1 to ensure all parts and hardware are available to complete the installation.
2. Unpack the backboard and lay face down on the floor (using the carton to protect the face of the backboard) directly below the backstop support system where it is to be installed.
3. Bolt the upper backboard extension (2) to the height adjustment assembly (1). See Detail "A".



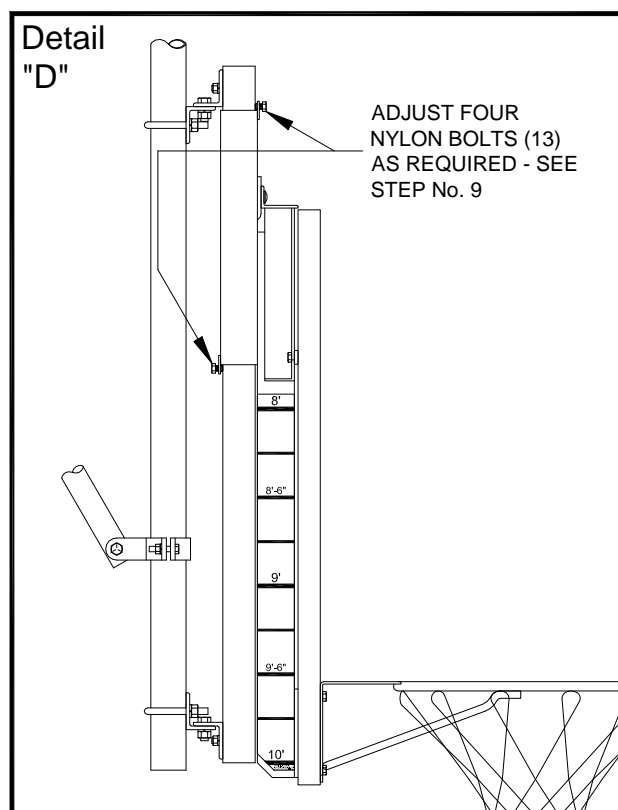
4. Lay the assembled height adjustment unit on the backside of the backboard with the attachment holes in alignment with the attachment inserts or slots on the backboard. Secure the upper backboard extension (2) to the backboard with the necessary hardware. (Hardware is optional – see custom packing list if applicable.) See Detail "B".



5. Hoist entire height adjustment assembly into position on the 2-3/8" O.D. drop tubes. See Detail "C". Secure to 2-3/8" O.D. drop tubes with the angles and hardware provided with the height adjustment unit.



6. Attach goal to backboard and height adjustment Center-Strut® with hardware provided with the goal. Check goal with level before tightening the four bolts. See Detail "C".
7. With the height adjustment unit raised to its highest position (bottomed out on the upper angle), check the 10'-0" goal height. Move height adjustment unit up or down on the 2-3/8" O.D. drop tubes as required to acquire the 10'-0" goal height.
8. **CHECK HEIGHT ADJUSTMENT OPERATION** – Crank unit down to the 8'-0" goal height, then back up to 10'-0" using the height adjustment crank provided. (NOTE – One crank is provided with each pair of height adjustment units.)
9. Install the four 3/8" x 1/2" lg. nylon bolts (13) into the four flat nuts on the height adjustment frame slide mechanism. The four nylon bolts may be adjusted to maximum backboard stability if required – Caution, over-tightening these nylon bolts could create undue friction and make the unit more difficult to operate with the hand crank. See Detail "D".
10. Lubricate the two plated inside tubes with an aerosol dry lubricant, such as Sprayon™ #S00708 T.F.E. DRY LUBE. See detail on Page 5. Sprayon™ #S00708 T.F.E. DRY LUBE is available from Porter Athletic Equipment Company, in a 10 oz. aerosol can (Porter part number MISC00243000). Run height adjuster up and down (10' to 8') several times. NOTE – protect the gymnasium floor with a drop cloth to prevent a slippery build-up on the gymnasium floor.



11. Give the operating crank and this instruction booklet to the customer. Demonstrate the operation of the unit. Make the customer aware of the Cautions, the Warnings, and the Maintenance requirements listed below and on Page 5.



## CAUTION

Do not continue to crank unit once it reaches the 10'-0" or 8'-0" goal heights, as this will place undue strain on the mechanism and possibly jam unit in place.

When height adjustment unit is mounted on a folding-type backboard support system, always adjust the goal height to 10'-0" before hoisting or folding the unit, so as not to place undue strain on the hoist system or the height adjustment mechanism.

Always keep the operating crank in the possession of a responsible adult who is trained in the proper use of this system.

Do NOT use a power drill that does not have a torque (clutch) adjustment, to raise and lower the height adjuster. See below for information on Porter's No. 00900-259 Portable Operator Kit.



## WARNING

Before attempting any repairs, lower the unit to the lowest position (8'-0" goal height) to eliminate the possibility of the backboard dropping suddenly, which could result in serious injuries or death.



## NOTE

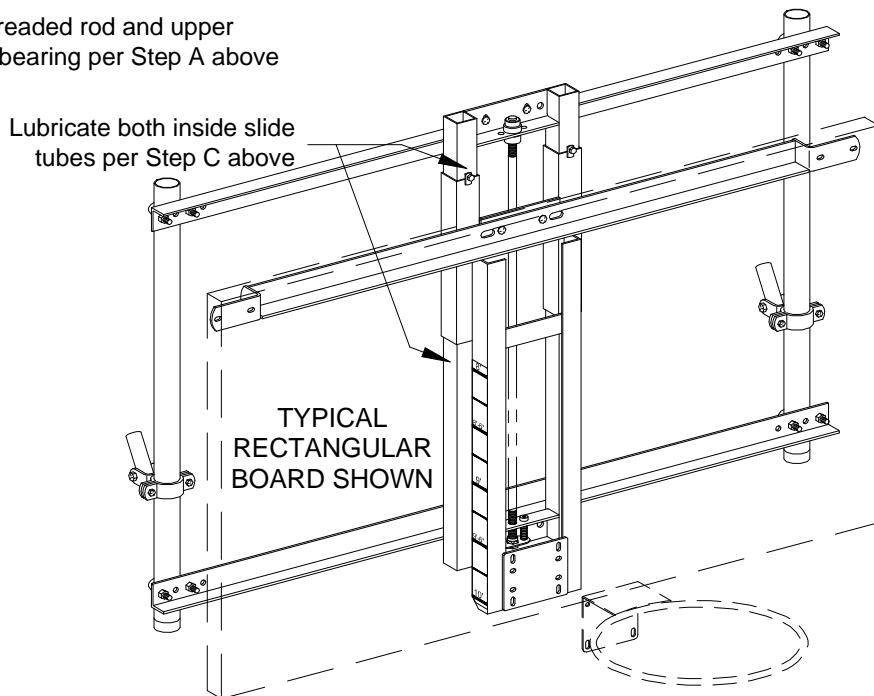
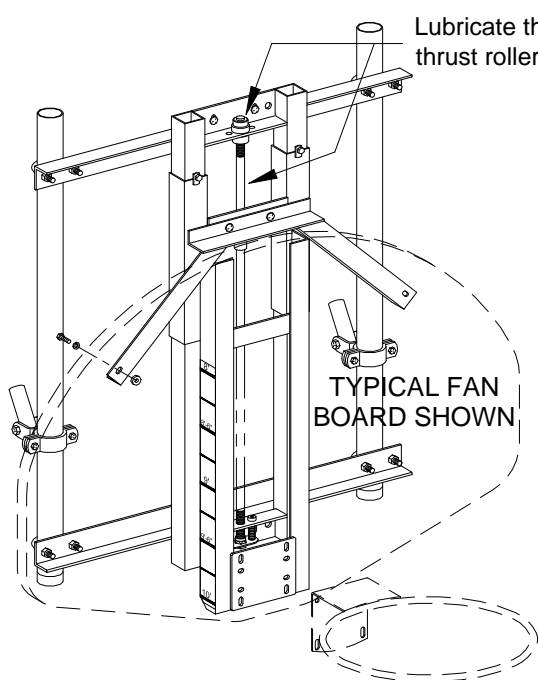
This manual height adjuster can be raised and lowered with Porter's No. 00900-259 Portable Operator Kit. This battery-operated unit has a built-in torque (clutch) adjustment, a low operating speed (450 r.p.m.), and includes a socket extension assembly. Use the lowest torque clutch setting possible to operate the height adjuster, to avoid undue stress on the unit as it reaches the maximum Up (10') or Down (8') positions. Contact your local Porter dealer or Porter Athletic Equipment Company for additional information.



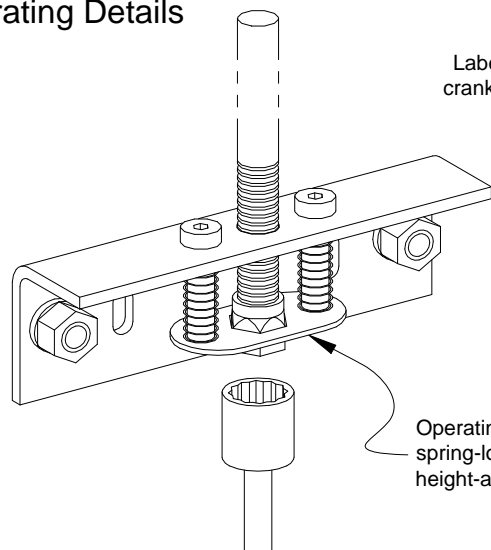
No. 00900-259 PORTABLE OPERATOR KIT

## CARE AND MAINTENANCE

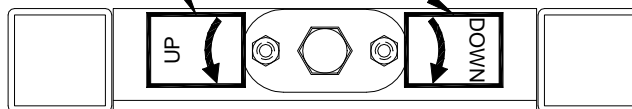
- A.** Semi-annually lubricate the entire threaded rod assembly and upper thrust roller bearing with any high quality multi-purpose type grease.
- B.** Periodically inspect height adjustment unit and support system for loose or defective parts – tighten or replace immediately as required.
- C.** Periodically (at least annually, depending on usage) lubricate the two plated inside tubes with an aerosol dry lubricant, such as Sprayon™ #S00708 T.F.E. DRY LUBE. Sprayon™ #S00708 T.F.E. DRY LUBE is available from your local Porter dealer or from Porter Athletic Equipment Company, in a 10 oz. aerosol can (Porter part number MISC00243000). Run height adjuster up and down (10' to 8') several times. NOTE – protect the floor with a drop cloth to prevent a slippery build-up on the gymnasium floor.



## Operating Details



Labels indicate direction of operating crank to raise or lower height adjuster



Operating crank automatically pushes spring-loaded locking plate upward, allowing height-adjustment mechanism to operate

**porter**

601 Mercury Drive, Champaign, IL U.S.A., 61822  
www.porterathletic.com  
(888) 277-7778

SAVE THESE INSTRUCTIONS FOR FUTURE USE