



PROCEDURE FOR FIELD INSTALLATION OF SUR-LOCK FEATURE ON NO. 900 CENTER-STRUT HEIGHT ADJUSTMENT UNITS

☐ **STEP NO. 1**

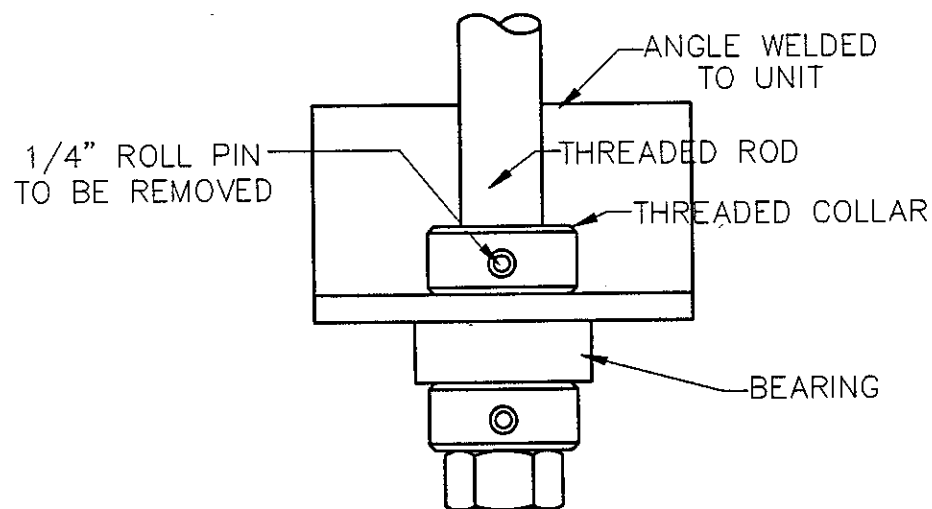
Lower height adjustment unit to the lowest position.

☐ **STEP NO. 2**

Knock out existing $\frac{1}{4}$ " x $1\frac{1}{2}$ " lg. roll pin, located in the upper collar on the threaded height adjustment rod using a drift pin. (See Existing Assembly Detail.)

☐ **STEP NO. 3**

Unscrew threaded rod keeping bearing to use with new rod assembly.



EXISTING ASSEMBLY
DETAIL



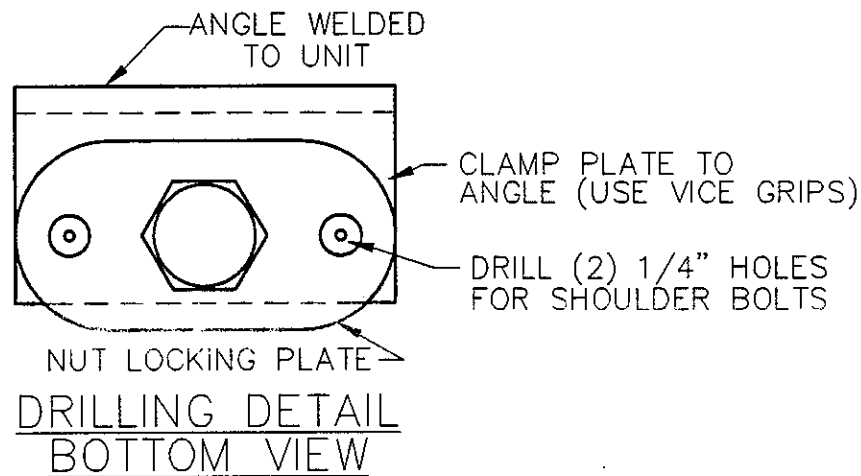
STEP NO. 4

Clamp nut locking plate to angle centering hex hole on existing hole. (See Drilling Detail.)



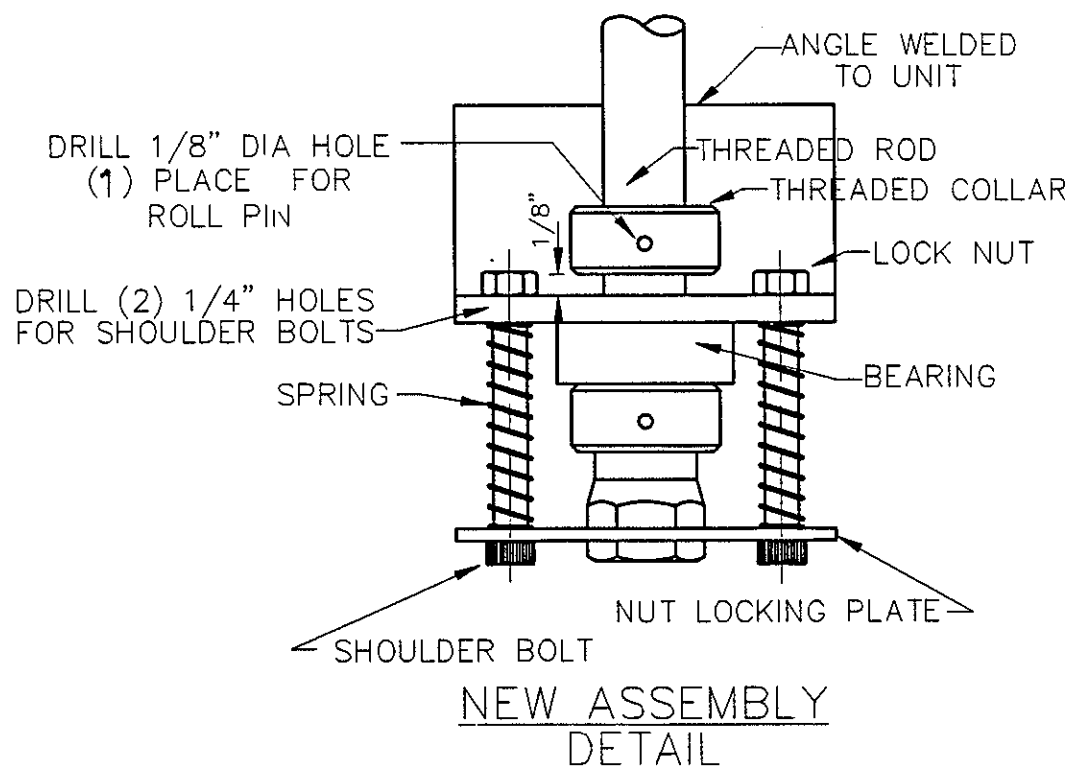
STEP NO. 5

Center punch and drill (2) $\frac{1}{4}$ " dia. holes in angle using nut locking plate as guide.



STEP NO. 6

Assemble the new threaded rod with nut assembly, through the existing bearing, and threaded collar in the same manner in which the old rod was assembled. Drill the top threaded collar using a $\frac{1}{8}$ " dia. drill. Pin in place using the $\frac{1}{8}$ " x $1\frac{1}{2}$ " lg. roll pin. NOTE top collar needs $\frac{1}{8}$ " space between collar and angle. (See New Assembly Detail.)



☐ **STEP NO. 7**

Assemble nut locking plate to angle using the (2) 5/16" x 2" lg. shoulder bolts, (2) springs, and (2) 1/4" lock hex nuts. (See new assembly detail.)

☐ **STEP NO. 8**

Check operation of plate. Plate should slide freely on shoulder bolts. Plate will slide onto nut if the threaded rod starts to turn during basketball play.

☐ **STEP NO. 9**

Apply lithium-type grease to the threaded rod and to the spring and shoulder bolts.

☐ **STEP NO. 10**

Check unit with height adjuster crank at job site to make sure it has the proper depth of socket to push plate out of the way of the nut allowing adjuster rod to turn.

☐ **STEP NO. 11**

Instruct operators that sufficient upward force be applied with the hand crank to make sure plate is out of the way when adjusting height adjuster so as not to damage lock plate.

SAVE THESE INSTRUCTIONS FOR FUTURE REFERENCE

Porter Athletic Equipment Company, 2500 South 25th Avenue, Broadview, IL 60153-9006, (708) 338-2000