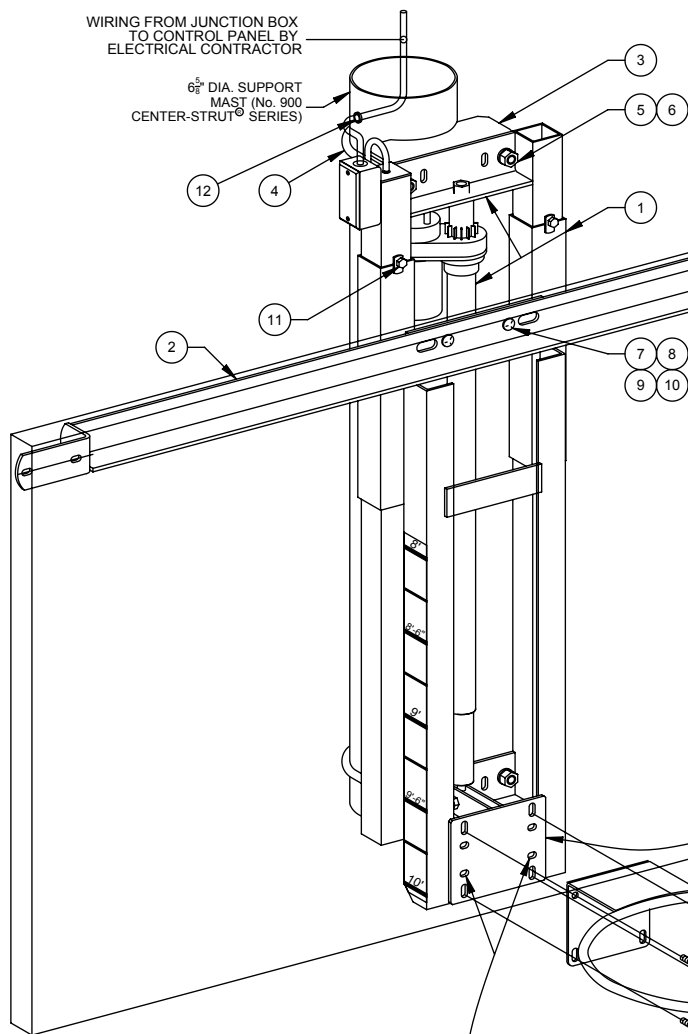


00904506 - CENTER-STRUT HEIGHT ADJUSTER

POWR-TOUCH OPERATION FOR RECTANGULAR BACKBOARD NO. 208 RECTANGULAR GLASS



| PARTS LIST | | | |
|------------|------|--------------|---|
| NO. | QTY. | PART NO. | DESCRIPTION |
| 1 | 1 | FRME00213002 | HEIGHT ADJUSTER ASSEMBLY |
| 2 | 1 | XEXT91612002 | RECTANGULAR BACKBOARD EXTENSION |
| 3 | 2 | CLMP0056002 | MAST CLAMP |
| 4 | 2 | UBOT000060E2 | 5/8\" U-BOLT |
| 5 | 4 | HDWE04006000 | 5/8\" LOCKWASHER |
| 6 | 4 | HDWE03012000 | 5/8\" HEX NUT |
| 7 | 2 | HDWE020130E0 | 3/8\" x 1 1/4\" LG. CARRIAGE BOLT (GRADE 5) |
| 8 | 2 | HDWE050040E0 | 3/8\" FLATWASHER |
| 9 | 2 | HDWE040020E0 | 3/8\" LOCKWASHER |
| 10 | 2 | HDWE030020E0 | 3/8\" HEX NUT |
| 11 | 4 | HDWE01134000 | 3/8\" x 1/2\" LG. NYLON BOLT |
| 12 | 1 | BUSH00069002 | PLASTIC BUSHING |

POWR-TOUCH® CONTROL COMPONENTS INCLUDED ELSEWHERE

SEE PAGE No. B-901-P FOR FIELD WIRING
DETAILS AND REQUIREMENTS

GOAL MOUNTING HARDWARE EXTENDS THROUGH
BACKBOARD AND CENTER CHANNEL TO PROVIDE
DIRECT-MOUNT CENTER-STRUT® FEATURE

SLOTS ALLOW BACKBOARD
TO BE MOUNTED TO
CENTER-STRUT®, PROVIDING
FOR REMOVAL OF GOAL
WITHOUT REMOVING
BACKBOARD

10'-9\" (3.27m)
TYPICAL LOCATION
OF BRACE
ATTACHMENT

3'-8 1/4\" (1.12m)
9'-8 1/2\" (2.96m)
TO FINISHED FLOOR

10'-0\" (3.05m)
GOAL HEIGHT

HEIGHT SETTINGS LABEL
APPLIED TO SIDE OF
HEIGHT ADJUSTER

8'-0\" (2.44m)
GOAL HEIGHT

- _____ - 00904506 POWR-TOUCH OPERATION FOR RECTANGULAR BACKBOARD
- _____ - POWR-TOUCH 2.5 TOUCH PAD (12500100, SEE E-2555)
- _____ - POWR-TOUCH 2.5 TOUCH PAD WITH CUSTOM LEGEND
(92555100, SEE E-2555)
- _____ - POWR-TOUCH 2.5 CONTROL PANEL (12500200, SEE E-2555)
- _____ - POWR-TOUCH 5 (12800000, SEE E-12800)
- SEE B-200 FOR BACKBOARD AND GOAL OPTIONS

00904506 - CENTER-STRUT HEIGHT ADJUSTER

POWR-TOUCH OPERATION FOR RECTANGULAR BACKBOARD
NO. 208 RECTANGULAR GLASS

SPECIFICATIONS

Height adjustment unit shall be designed for use with No. 900 Center-Strut® series ceiling suspended basketball backstop support systems to provide an adjustable, direct-mount (Center-Strut®) goal attachment system to eliminate any strain on the backboard should a player hang on the front mounted goal (conforms to the latest NCAA recommendation). Height adjustment units without the prescribed direct-mount goal feature will not be approved as equal. Height adjustment feature will allow goal height settings from 8'-0" to the official 10'-0" for use by all age groups. For use with No. 208 rectangular glass backboards.

Center unitized support frame shall be fabricated by dual, 2-3/16" square heavy-wall zinc plated guide tubes located on 11-3/16" centers. Ends of guide tubes shall be welded to heavy, formed mounting brackets. Heavy formed, die cut steel clamp assemblies (2) shall be provided for securing height adjustment assembly directly to a 6-5/8" O.D. center support structure (No. 900 Center-Strut® series basketball backstops). Outer dual slide tubes shall support heavy structural steel angle sections which extend downward to accept a direct-mount (Center-Strut®) goal mounting system. Slide tube assembly shall be provided with a heavy formed steel section to attach a special upper backboard support assembly to secure the unit to the upper two corners of the rectangular backboard on standard (5'-6") mounting centers.

Height adjustment unit shall incorporate a compact 115-volt, gear motor type linear actuator with 600 pound thrust capacity to raise and lower the goal height electrically. Motor shall draw 1.4 amps under full load. Integral limit switches shall provide automatic shut off at 8' and 10' goal heights. The motor shall be controlled by Porter No. 2500 or 2550 Powr-Touch® Gymnasium Control Systems. Specify separately Powr-Touch® Key Pad and Powr-Touch® Control Panel - quantities as required. See Page No. E-2500 or E-2550 for details and specifications. Wiring from junction box on height adjuster frame to relay panel on Powr-Touch® System shall be provided by the electrical contractor to meet all local code requirements.

Wiring of all electrical components shall be in accordance with local area codes, and in accordance with manufacturer's instructions. All conduit, wiring, junction boxes and components not specified herein shall be furnished and installed by the electrical contractor.

A height setting scale shall be located on the side of the unit to visually determine height settings from 8'-0" to 10'-0" in 3" increments.

Height adjustment frame shall be finished with one coat of flat black enamel. Hardware shall be furnished for mounting unit to a 6-5/8" O.D. vertical support tube.

WARRANTY

- Height Adjusters furnished with a 1-year limited warranty.