

00601-506 - HEIGHT ADJUSTMENT SYSTEM

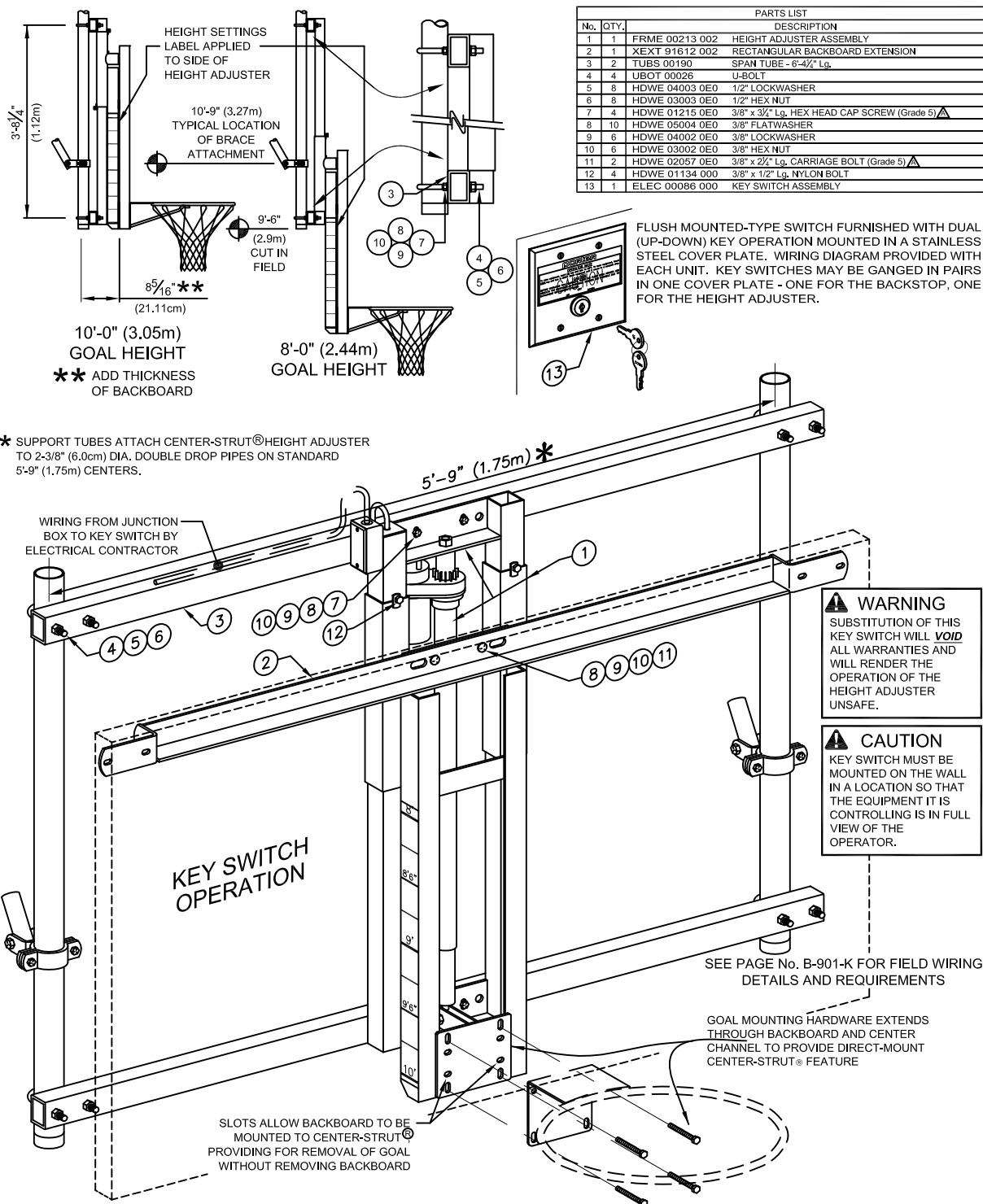
CENTER-STRUT® HEIGHT ADJUSTMENT SYSTEM FOR RECTANGULAR BACKBOARD - ELECTRIC OPERATION WITH KEY SWITCH

PORTER

WWW.PORTERATHLETIC.COM/FACILITY

HEIGHT ADJUSTMENT SYSTEM SPECIFICATION SHEET

B-601-506



— 00601-506 HEIGHT ADJUSTMENT SYSTEM FOR No. 600 SERIES BACKSTOP
w/RECT. BACKBOARD - ELECTRIC OPERATION WITH KEY SWITCH

PORTER®

888-277-7778 PORTER@PORTERATHLETIC.COM
© COPYRIGHT 2014 PORTER ATHLETIC - ALL RIGHTS RESERVED

PROJECT NUMBER

PROJECT NAME

4/16/2014

00601-506 - HEIGHT ADJUSTMENT SYSTEM

CEILING SUSPENDED, FORWARD FOLD, REAR BRACED UNIT
UP TO 28' ATTACHMENT HEIGHT

SPECIFICATIONS

PORTER No. 00601-506 CENTER-STRUT® HEIGHT ADJUSTMENT SYSTEM WITH ELECTRIC KEY SWITCH OPERATION FOR USE ON No. 600 SERIES BASKETBALL BACKSTOPS WITH RECTANGULAR BACKBOARDS

Height adjustment unit shall be designed for use with No. 600 series ceiling suspended basketball backstop support systems to provide an adjustable, direct-mount (Center-Strut®) goal attachment system to eliminate any strain on the backboard should a player hang on the front mounted goal (conforms to the latest NCAA recommendation). Height adjustment units without the prescribed direct-mount goal feature will not be approved as equal. Height adjustment feature will allow goal height settings from 8'-0" to the official 10'-0" for use by all age groups. Unit shall be designed for use with any official size (4' x 6' or 3'-6" x 6') Porter rectangular backboard and companion front mount type goal.

Center unitized support frame shall be fabricated by dual, 2-3/16" square heavy-wall zinc plated guide tubes located on 11-3/16" centers. Ends of guide tubes shall be welded to heavy, formed mounting brackets. Height adjustment assembly mechanism shall be supported to No. 600 line drop frame assembly on 5'-9" centers by heavy structural support tubes. Outer dual slide tubes shall support heavy structural steel angle sections which extend downward to accept a direct-mount (Center-Strut®) goal mounting system. Slide tube assembly shall be provided with a heavy formed steel section to attach a special upper backboard support assembly to secure the unit to the upper two corners of the rectangular backboard on standard 5'-6" mounting centers.

Height adjustment unit shall incorporate a compact 115-volt, gear motor type linear actuator with 600 pound thrust capacity to raise and lower the goal height electrically. Motor shall draw 1.4 amps under full load. Integral limit switches shall provide automatic shut off at 8' and 10' goal heights. The motor shall be controlled by a special dual keyed, flush wall-mounted momentary key switch. Switch assembly shall be furnished with a 4-1/2" square stainless steel cover plate for mounting in a masonry wall box by the electrical contractor. (Key switches may be ganged in pairs in one cover plate to control the actuator and the backstop winch – specify requirements). Wiring from junction box on height adjuster frame to key switch shall be provided by the electrical contractor to meet all local code requirements.

Wiring of all electrical components shall be in accordance with local area codes, and in accordance with manufacturer's instructions. All conduit, wiring, junction boxes and components not specified herein shall be furnished and installed by the electrical contractor.

A height setting scale shall be located on the side of the unit to visually determine height settings from 8'-0" to 10'-0" in 3" increments.

Height adjustment frame shall be finished with one coat of flat black enamel. Hardware shall be furnished for mounting unit to a 2-3/8" O.D. vertical support structure on 5'-6" or 5'-9" centers.

LIFETIME WARRANTY (ADD TO SPECIFICATIONS AS REQUIRED)

Limited Lifetime warranty on all Porter rectangular backboards when used in conjunction with No. 00601-506 Center-Strut® height adjustment unit installed on a Porter No. 600 series support structure.