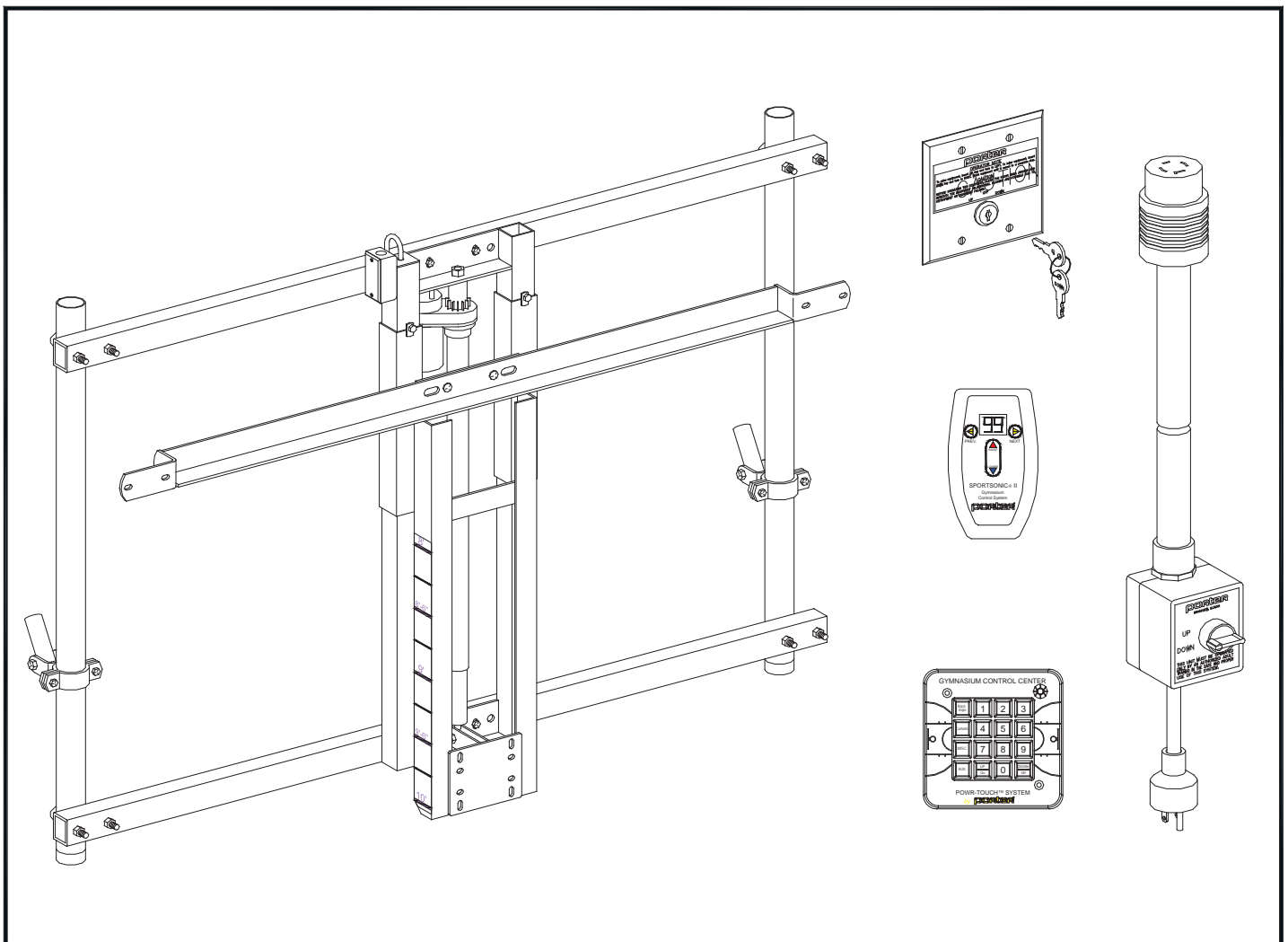




ASSEMBLY, INSTALLATION & MAINTENANCE INSTRUCTIONS

CENTER-STRUT[®] HEIGHT ADJUSTMENT UNITS *ELECTRIC AND MANUAL OPERATION* *For Use on No. 500 and 600 Line Backstops*



Patent No's. 5,279,496; 6,056,654; 6,537,162. Other patents pending.

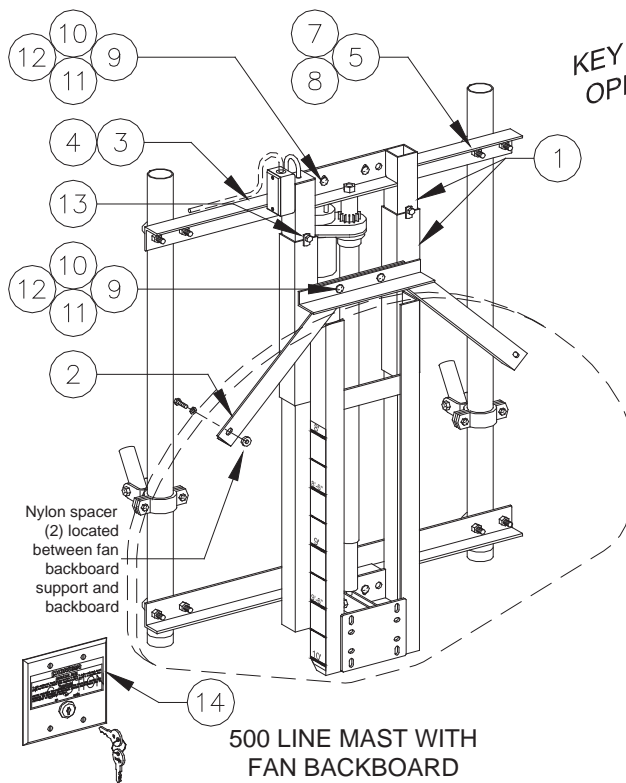
SAVE THESE INSTRUCTIONS FOR FUTURE USE

TABLE OF CONTENTS

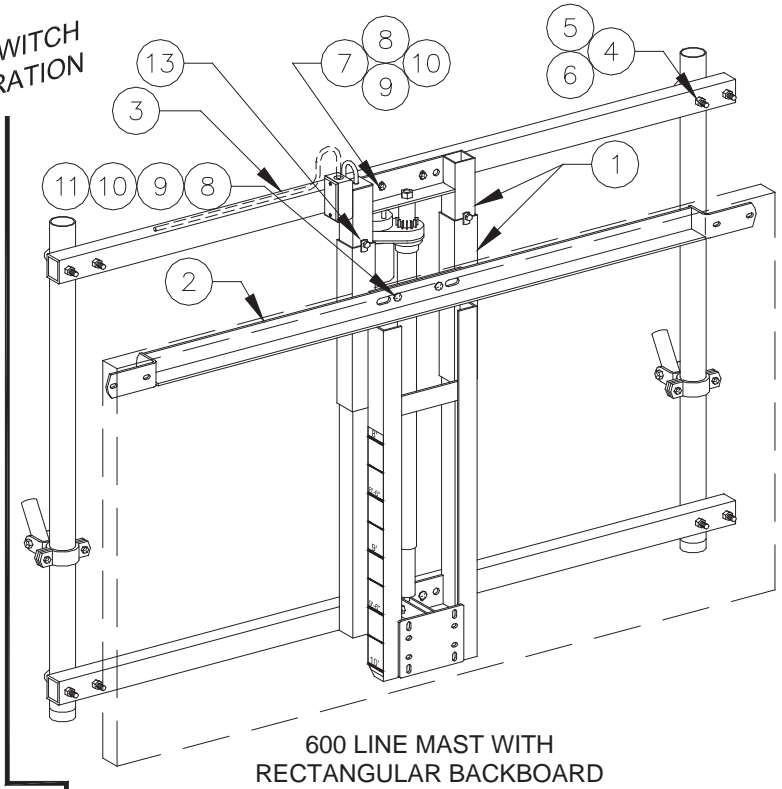
ITEM / DESCRIPTION	PAGE No.
Parts List – No. 00501-211 Key Switch Operation	3
Parts List – No. 00601-506 Key Switch Operation	3
Parts List – No. 00502-211 Powr-Stick Operation	4
Parts List – No. 00602-506 Powr-Stick Operation	4
Parts List – No. 00503-211 Sportsonic [®] II Operation	5
Parts List – No. 00603-506 Sportsonic [®] II Operation	5
Parts List – No. 00504-211 Powr-Touch [®] Operation	6
Parts List – No. 00604-506 Powr-Touch [®] Operation	6
Parts List – No. 00500-211 Manual Operation	7
Parts List – No. 00600-506 Manual Operation	7
Assembly of Height Adjuster to Backboard	8
Attachment of Height Adjuster to Backstop Mast	10
Wiring Requirements – No. 00501-211 Key Switch Operation	12
Wiring Requirements – No. 00601-506 Key Switch Operation	12
Proper Usage – No. 00502-211 Powr-Stick Operation	13
Proper Usage – No. 00602-506 Powr-Stick Operation	13
Wiring Requirements – No. 00503-211 Sportsonic [®] II Operation	14
Wiring Requirements – No. 00603-506 Sportsonic [®] II Operation	14
Wiring Requirements – No. 00504-211 Powr-Touch [®] Operation	15
Wiring Requirements – No. 00604-506 Powr-Touch [®] Operation	15
Cautions and Warnings	16
Care and Maintenance	17

PARTS LIST – KEY SWITCH OPERATION

CENTER-STRUT® HEIGHT ADJUSTMENT UNITS With Key Switch Operation No. 00501-211 and 00601-506



**KEY SWITCH
OPERATION**



PARTS LIST - No. 00501-211

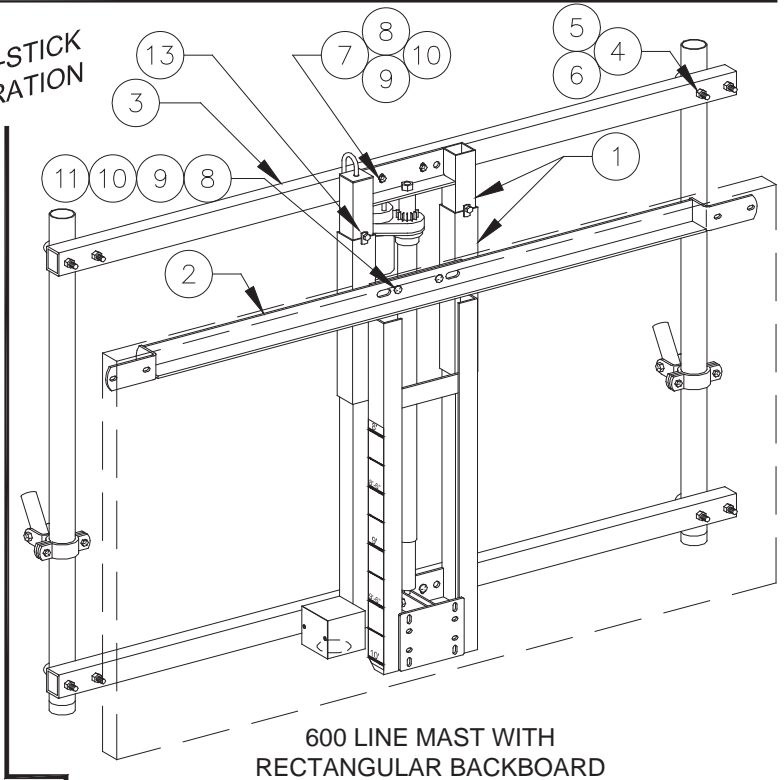
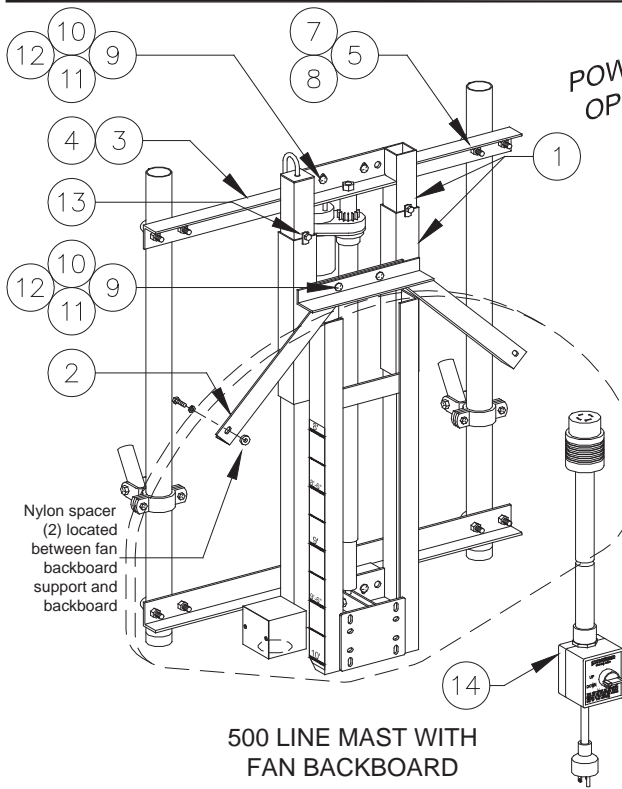
ITEM	QTY.	PART NUMBER	DESCRIPTION
1	1	FRME 00213 002	HEIGHT ADJUSTER ASSEMBLY
2	1	FRME 00202 002	FAN BACKBOARD SUPPORT
3	2	ANGL 00191 002	SPAN ANGLE - 3'-4" Lg.
4	2	ANGL 00190 002	MOUNTING ANGLE - 9" Lg.
5	4	UBOT 00007 000	U-BOLT
6	4	HDWE 01154 0P0	1/2" x 1 1/4" Lg. HEX HD. CAP SCREW (Grade 5)
7	12	HDWE 04003 0E0	1/2" LOCKWASHER
8	12	HDWE 03003 0E0	1/2" HEX NUT
9	6	HDWE 02073 0P0	3/8" x 1 1/4" Lg. CARRIAGE BOLT (Grade 5)
10	6	HDWE 05004 0E0	3/8" FLATWASHER
11	6	HDWE 04002 0E0	3/8" LOCKWASHER
12	6	HDWE 03002 0E0	3/8" HEX NUT
13	4	HDWE 01134 000	3/8" x 1/2" Lg. NYLON BOLT
14	1	ELEC 00086 000	KEY SWITCH ASSEMBLY

PARTS LIST - No. 00601-506

ITEM	QTY.	PART NUMBER	DESCRIPTION
1	1	FRME 00213 002	HEIGHT ADJUSTER ASSEMBLY
2	1	XEXT 91612 002	RECT. BACKBOARD EXTENSION
3	2	TUBS 00190	SPAN TUBE - 6'-4 1/4" Lg.
4	4	UBOT 00026	U-BOLT
5	8	HDWE 04003 0E0	1/2" LOCKWASHER
6	8	HDWE 03003 0E0	1/2" HEX NUT
7	4	HDWE 01215 0E0	3/8" x 3 1/4" Lg. HEX HD. CAP SCREW (Grade 5)
8	10	HDWE 05004 0E0	3/8" FLATWASHER
9	6	HDWE 04002 0E0	3/8" LOCKWASHER
10	6	HDWE 03002 0E0	3/8" HEX NUT
11	2	HDWE 02057 0E0	3/8" x 2 1/4" Lg. CARRIAGE BOLT (Grade 5)
12	4	HDWE 01134 000	3/8" x 1/2" Lg. NYLON BOLT
13	1	ELEC 00086 000	KEY SWITCH ASSEMBLY

PARTS LIST – POWR-STICK OPERATION

CENTER-STRUT® HEIGHT ADJUSTMENT UNITS With POWR-STICK OPERATION No. 00502-211 and 00602-506



PARTS LIST - No. 00502-211

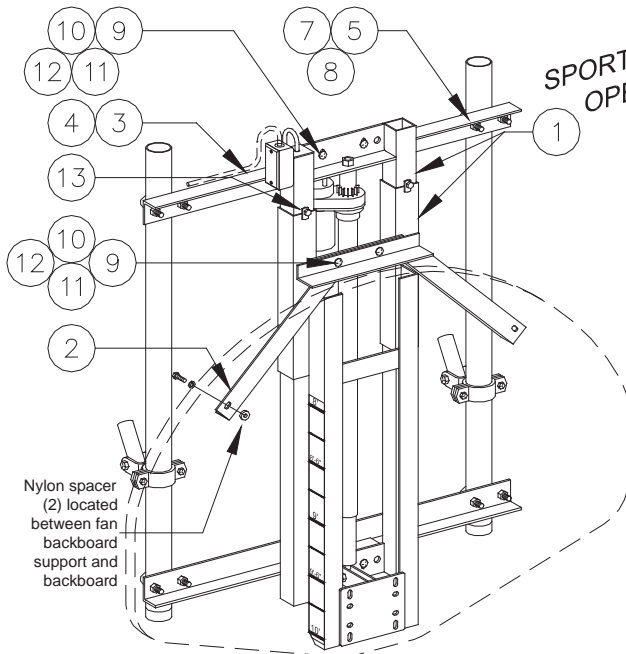
ITEM	QTY.	PART NUMBER	DESCRIPTION
1	1	FRME 00206 002	HEIGHT ADJUSTER ASSEMBLY
2	1	FRME 00202 002	FAN BACKBOARD SUPPORT
3	2	ANGL 00191 002	SPAN ANGLE - 3'-4" Lg.
4	2	ANGL 00190 002	MOUNTING ANGLE - 9" Lg.
5	4	UBOT 00007 000	U-BOLT
6	4	HDWE 01154 0P0	1/2" x 1 1/4" Lg. HEX HD. CAP SCREW (Grade 5)
7	12	HDWE 04003 0E0	1/2" LOCKWASHER
8	12	HDWE 03003 0E0	1/2" HEX NUT
9	6	HDWE 02073 0P0	3/8" x 1 1/4" Lg. CARRIAGE BOLT (Grade 5)
10	6	HDWE 05004 0E0	3/8" FLATWASHER
11	6	HDWE 04002 0E0	3/8" LOCKWASHER
12	6	HDWE 03002 0E0	3/8" HEX NUT
13	4	HDWE 01134 000	3/8" x 1/2" Lg. NYLON BOLT
14	→	00902 000	POWR-STICK ASSEMBLY (One Per Order)

PARTS LIST - No. 00602-506

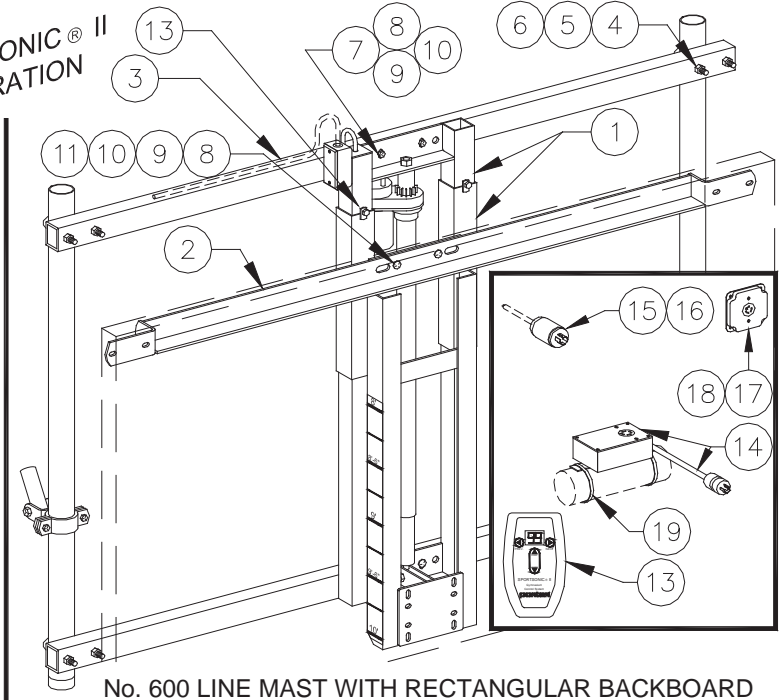
ITEM	QTY.	PART NUMBER	DESCRIPTION
1	1	FRME 00206 002	HEIGHT ADJUSTER ASSEMBLY
2	1	XEXT 91612 002	RECT. BACKBOARD EXTENSION
3	2	TUBS 00190	SPAN TUBE - 6'-4 1/4" Lg.
4	4	UBOT 00026	U-BOLT
5	8	HDWE 04003 0E0	1/2" LOCKWASHER
6	8	HDWE 03003 0E0	1/2" HEX NUT
7	4	HDWE 01215 0E0	3/8" x 3 1/4" Lg. HEX HD. CAP SCREW (Grade 5)
8	10	HDWE 05004 0E0	3/8" FLATWASHER
9	6	HDWE 04002 0E0	3/8" LOCKWASHER
10	6	HDWE 03002 0E0	3/8" HEX NUT
11	2	HDWE 02057 0E0	3/8" x 2 1/4" Lg. CARRIAGE BOLT (Grade 5)
12	4	HDWE 01134 000	3/8" x 1/2" Lg. NYLON BOLT
13	→	00902 000	POWR-STICK ASSEMBLY (One Per Order)

PARTS LIST – SPORTSONIC® II OPERATION

CENTER-STRUT® HEIGHT ADJUSTMENT UNITS WITH SPORTSONIC® II OPERATION No. 00503-211 and 00603-506



No. 500 LINE MAST WITH FAN BACKBOARD



No. 600 LINE MAST WITH RECTANGULAR BACKBOARD

PARTS LIST - No. 00503-211

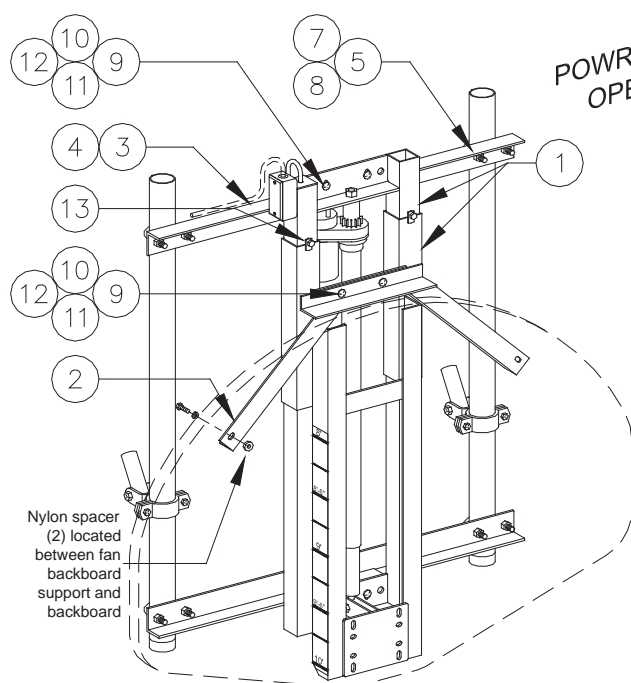
ITEM	QTY.	PART NUMBER	DESCRIPTION
1	1	FRME 00213 002	HEIGHT ADJUSTER ASSEMBLY
2	1	FRME 00202 002	FAN BACKBOARD SUPPORT
3	2	ANGL 00191 002	SPAN ANGLE - 3'-4" Lg.
4	2	ANGL 00190 002	MOUNTING ANGLE - 9" Lg.
5	4	UBOT 00007 000	U-BOLT
6	4	HDWE 01154 0P0	1/2" x 1 1/2" Lg. HEX HD. CAP SCREW (Grade 5)
7	12	HDWE 04003 0E0	1/2" LOCKWASHER
8	12	HDWE 03003 0E0	1/2" HEX NUT
9	6	HDWE 02073 0P0	3/8" x 1 1/4" Lg. CARRIAGE BOLT (Grade 5)
10	6	HDWE 05004 0E0	3/8" FLATWASHER
11	6	HDWE 04002 0E0	3/8" LOCKWASHER
12	6	HDWE 03002 0E0	3/8" HEX NUT
13	4	HDWE 01134 000	3/8" x 1/2" Lg. NYLON BOLT
14		12002-100	SPORTSONIC® II TRANSMITTER
15	1	XELC 12002 200	SPORTSONIC® II RECEIVER
16	1	ELEC 00013 100	4-PRONG TWIST-LOCK PLUG
17	1	ELEC 00140 000	STRAIN RELIEF INSERT
18	1	ELEC 00064 000	3-PRONG TWIST-LOCK RECEPTACLE
19	1	ELEC 00126 0G0	1/2" DEEP COVER PLATE
20	2	ELEC 00221 002	CABLE TIE - 14" Lg.

PARTS LIST - No. 00603-506

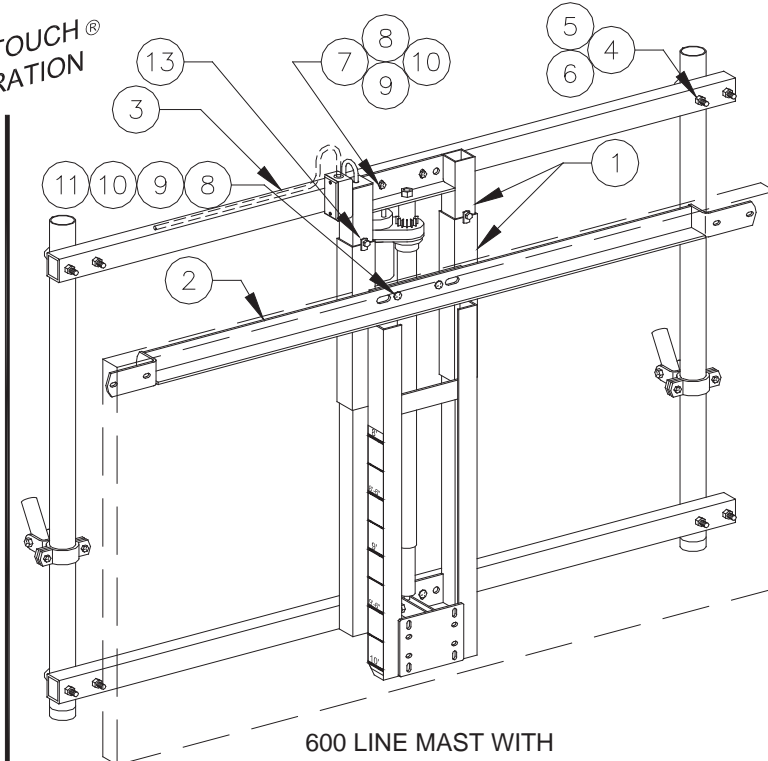
ITEM	QTY.	PART NUMBER	DESCRIPTION
1	1	FRME 00213 002	HEIGHT ADJUSTER ASSEMBLY
2	1	XEXT 91612 002	RECT. BACKBOARD EXTENSION
3	2	TUBS 00190	SPAN TUBE - 6'-4 1/4" Lg.
4	4	UBOT 00026	U-BOLT
5	8	HDWE 04003 0E0	1/2" LOCKWASHER
6	8	HDWE 03003 0E0	1/2" HEX NUT
7	4	HDWE 01215 0E0	3/8" x 3 1/4" Lg. HEX HD. CAP SCREW (Grade 5)
8	10	HDWE 05004 0E0	3/8" FLATWASHER
9	6	HDWE 04002 0E0	3/8" LOCKWASHER
10	6	HDWE 03002 0E0	3/8" HEX NUT
11	2	HDWE 02057 0E0	3/8" x 2 1/4" Lg. CARRIAGE BOLT (Grade 5)
12	4	HDWE 01134 000	3/8" x 1/2" Lg. NYLON BOLT
13		12002-100	SPORTSONIC® II TRANSMITTER
14	1	XELC 12002 200	SPORTSONIC® II RECEIVER
15	1	ELEC 00013 100	4-PRONG TWIST-LOCK PLUG
16	1	ELEC 00140 000	STRAIN RELIEF INSERT
17	1	ELEC 00064 000	3-PRONG TWIST-LOCK RECEPTACLE
18	1	ELEC 00126 0G0	1/2" DEEP COVER PLATE
19	2	ELEC 00221 002	CABLE TIE - 14" Lg.

PARTS LIST – POWR-TOUCH® OPERATION

CENTER-STRUT® HEIGHT ADJUSTMENT UNITS WITH POWR-TOUCH® OPERATION No. 00504-211 and 00604-506



500 LINE MAST WITH
FAN BACKBOARD



600 LINE MAST WITH
RECTANGULAR BACKBOARD

PARTS LIST - No. 00504-211

ITEM	QTY.	PART NUMBER	DESCRIPTION
1	1	FRME 00213 002	HEIGHT ADJUSTER ASSEMBLY
2	1	FRME 00202 002	FAN BACKBOARD SUPPORT
3	2	ANGL 00191 002	SPAN ANGLE - 3'-4" Lg.
4	2	ANGL 00190 002	MOUNTING ANGLE - 9" Lg.
5	4	UBOT 00007 000	U-BOLT
6	4	HDWE 01154 0P0	1/2" x 1 1/4" Lg. HEX HD. CAP SCREW (Grade 5)
7	12	HDWE 04003 0E0	1/2" LOCKWASHER
8	12	HDWE 03003 0E0	1/2" HEX NUT
9	6	HDWE 02073 0P0	3/8" x 1 1/4" Lg. CARRIAGE BOLT (Grade 5)
10	6	HDWE 05004 0E0	3/8" FLATWASHER
11	6	HDWE 04002 0E0	3/8" LOCKWASHER
12	6	HDWE 03002 0E0	3/8" HEX NUT
13	4	HDWE 01134 000	3/8" x 1/2" Lg. NYLON BOLT

POWR-TOUCH® CONTROL COMPONENTS INCLUDED ELSEWHERE

PARTS LIST - No. 00604-506

ITEM	QTY.	PART NUMBER	DESCRIPTION
1	1	FRME 00213 002	HEIGHT ADJUSTER ASSEMBLY
2	1	XEXT 91612 002	RECT. BACKBOARD EXTENSION
3	2	TUBS 00190	SPAN TUBE - 6'-4 1/4" Lg.
4	4	UBOT 00026	U-BOLT
5	8	HDWE 04003 0E0	1/2" LOCKWASHER
6	8	HDWE 03003 0E0	1/2" HEX NUT
7	4	HDWE 01215 0E0	3/8" x 3 1/4" Lg. HEX HD. CAP SCREW (Grade 5)
8	10	HDWE 05004 0E0	3/8" FLATWASHER
9	6	HDWE 04002 0E0	3/8" LOCKWASHER
10	6	HDWE 03002 0E0	3/8" HEX NUT
11	2	HDWE 02057 0E0	3/8" x 2 1/4" Lg. CARRIAGE BOLT (Grade 5)
12	4	HDWE 01134 000	3/8" x 1/2" Lg. NYLON BOLT

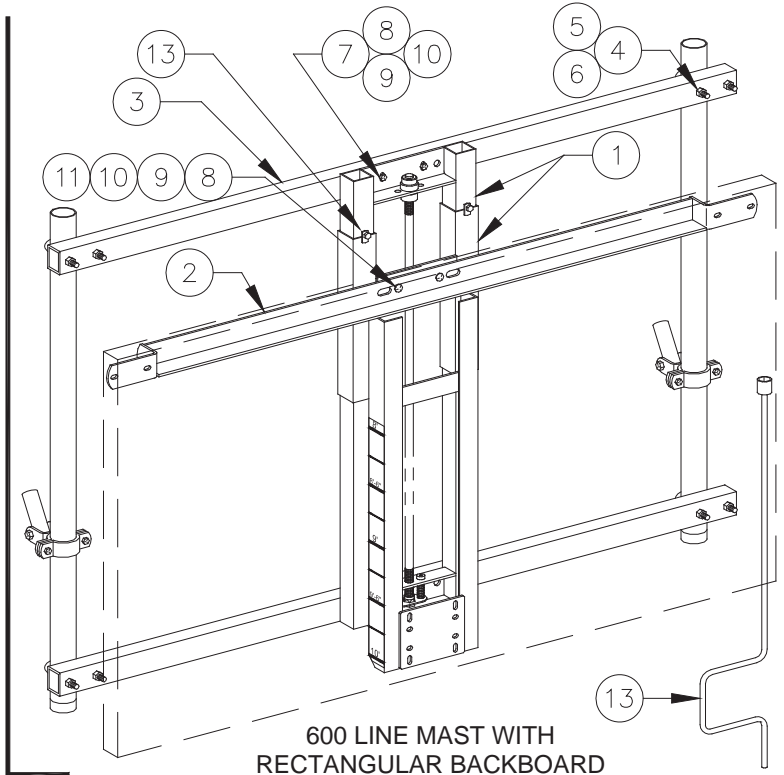
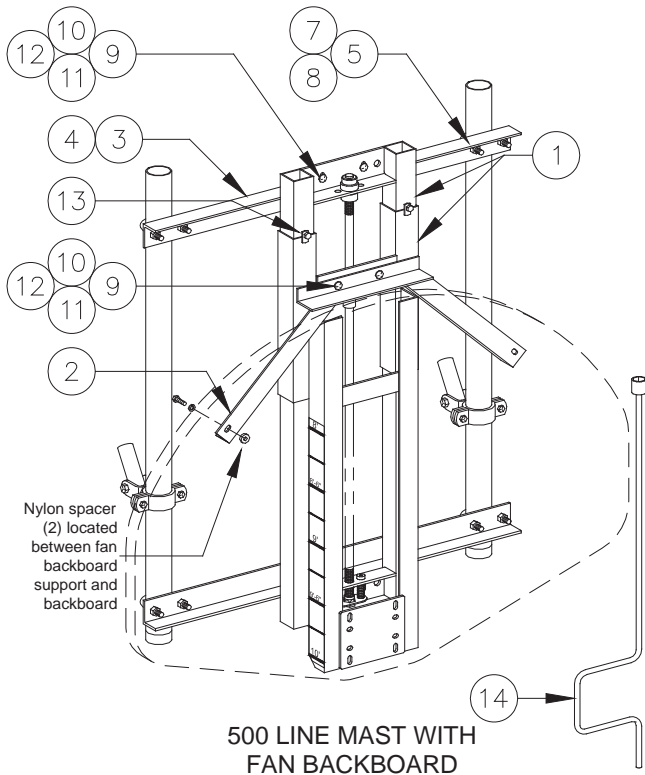
POWR-TOUCH® CONTROL COMPONENTS INCLUDED ELSEWHERE

PARTS LIST – MANUAL OPERATION

CENTER-STRUT® HEIGHT ADJUSTMENT UNITS

MANUAL OPERATION

No. 00500-211 and 00600-506



PARTS LIST - No. 00500-211

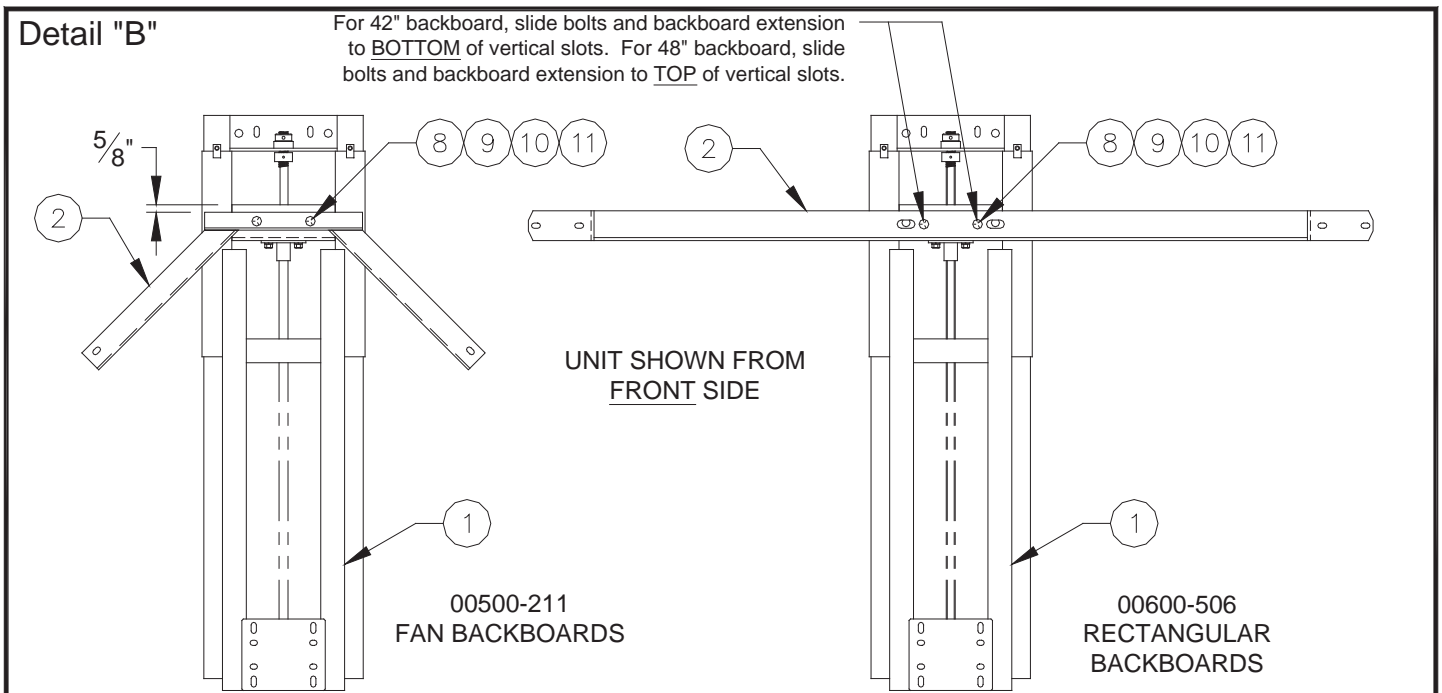
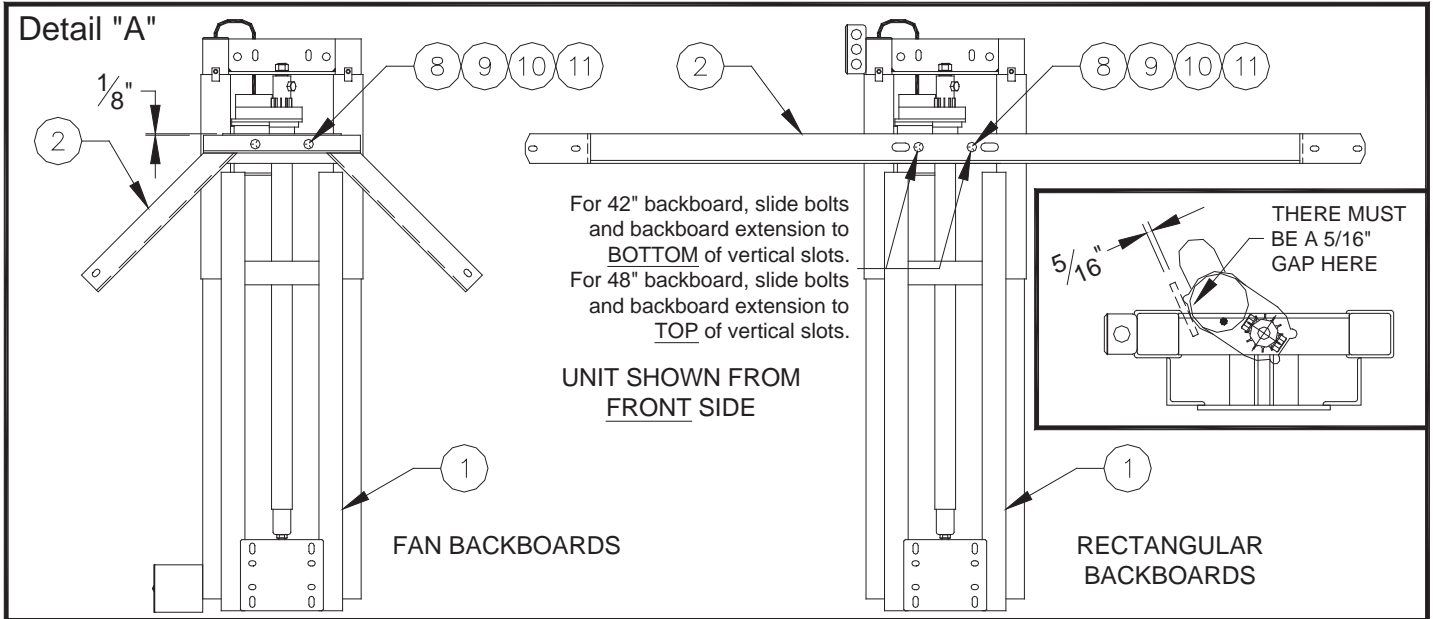
ITEM	QTY.	PART NUMBER	DESCRIPTION
1	1	FRME 00162 002	HEIGHT ADJUSTER ASSEMBLY
2	1	FRME 00202 002	FAN BACKBOARD SUPPORT
3	2	ANGL 00191 002	SPAN ANGLE - 3'-4" Lg.
4	2	ANGL 00190 002	MOUNTING ANGLE - 9" Lg.
5	4	UBOT 00007 000	U-BOLT
6	4	HDWE 01154 0P0	1/2" x 1 1/4" Lg. HEX HD. CAP SCREW (Grade 5)
7	12	HDWE 04003 0E0	1/2" LOCKWASHER
8	12	HDWE 03003 0E0	1/2" HEX NUT
9	6	HDWE 02073 0P0	3/8" x 1 1/2" Lg. CARRIAGE BOLT (Grade 5)
10	6	HDWE 05004 0E0	3/8" FLATWASHER
11	6	HDWE 04002 0E0	3/8" LOCKWASHER
12	6	HDWE 03002 0E0	3/8" HEX NUT
13	4	HDWE 01134 000	3/8" x 1/2" Lg. NYLON BOLT
14	→	XCRK 90000 102	HEIGHT ADJUSTER CRANK (1 per 2 Units)

PARTS LIST - No. 00600-506

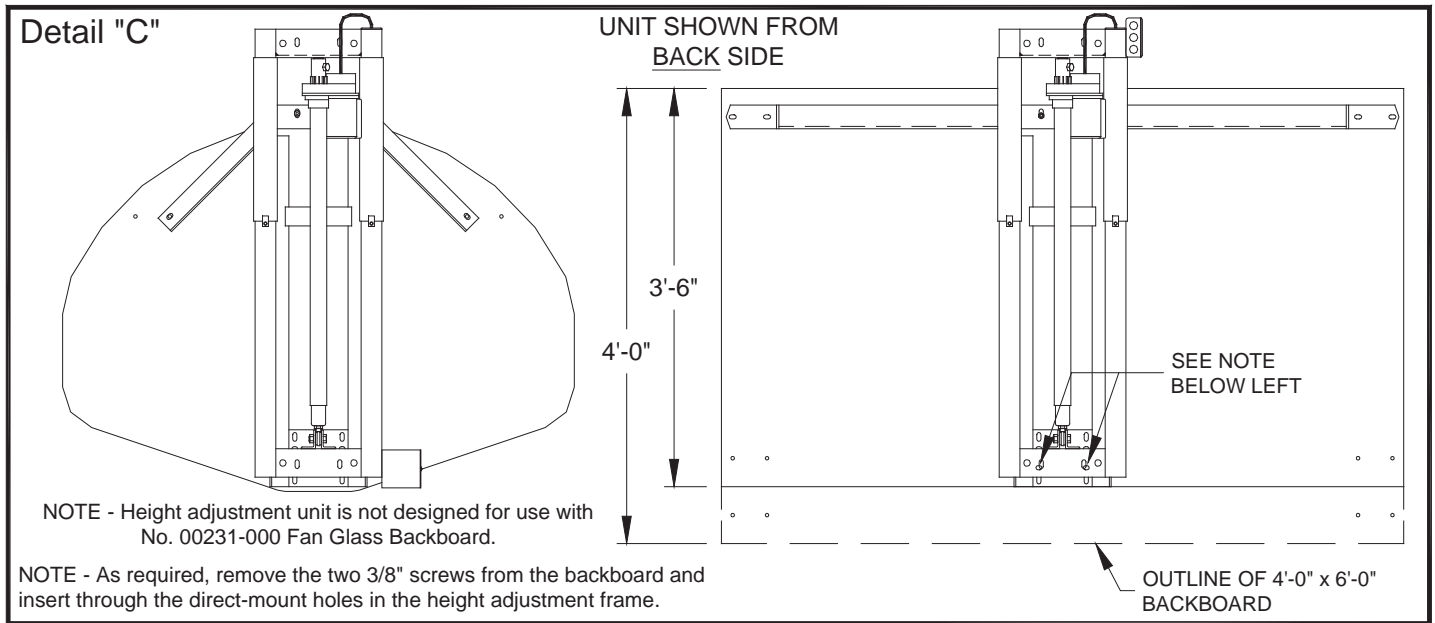
ITEM	QTY.	PART NUMBER	DESCRIPTION
1	1	FRME 00162 002	HEIGHT ADJUSTER ASSEMBLY
2	1	XEXT 91612 002	RECT. BACKBOARD EXTENSION
3	2	TUBS 00190	SPAN TUBE - 6'-4 1/4" Lg.
4	4	UBOT 00026	U-BOLT
5	8	HDWE 04003 0E0	1/2" LOCKWASHER
6	8	HDWE 03003 0E0	1/2" HEX NUT
7	4	HDWE 01215 0E0	3/8" x 3 1/4" Lg. HEX HD. CAP SCREW (Grade 5)
8	10	HDWE 05004 0E0	3/8" FLATWASHER
9	6	HDWE 04002 0E0	3/8" LOCKWASHER
10	6	HDWE 03002 0E0	3/8" HEX NUT
11	2	HDWE 02057 0E0	3/8" x 2 1/4" Lg. CARRIAGE BOLT (Grade 5)
12	4	HDWE 01134 000	3/8" x 1/2" Lg. NYLON BOLT
13	→	XCRK 90000 102	HEIGHT ADJUSTER CRANK (1 per 2 Units)

ASSEMBLY OF HEIGHT ADJUSTER TO BACKBOARD

1. Unpack height adjustment unit and check all items against appropriate Parts List on Page 3, 4, 5, 6 or 7, to ensure all parts and hardware are available to complete the installation.
2. If installing an electric height adjuster, check to make sure the actuator has not shifted during shipping. There must be a 5/16" gap between the actuator and the frame. See Detail "A". Loosen the hardware and rotate the actuator as required, using a 5/16" thick plate as a spacer between the actuator and the frame.
3. Unpack the backboard and lay face down on the floor (using the carton to protect the face of the backboard) directly below the backstop support system where it is to be installed.
4. Bolt the upper backboard extension (2) to the height adjustment assembly (1). If installing an electric height adjuster, see Detail "A". If installing a manual height adjuster, see Detail "B".

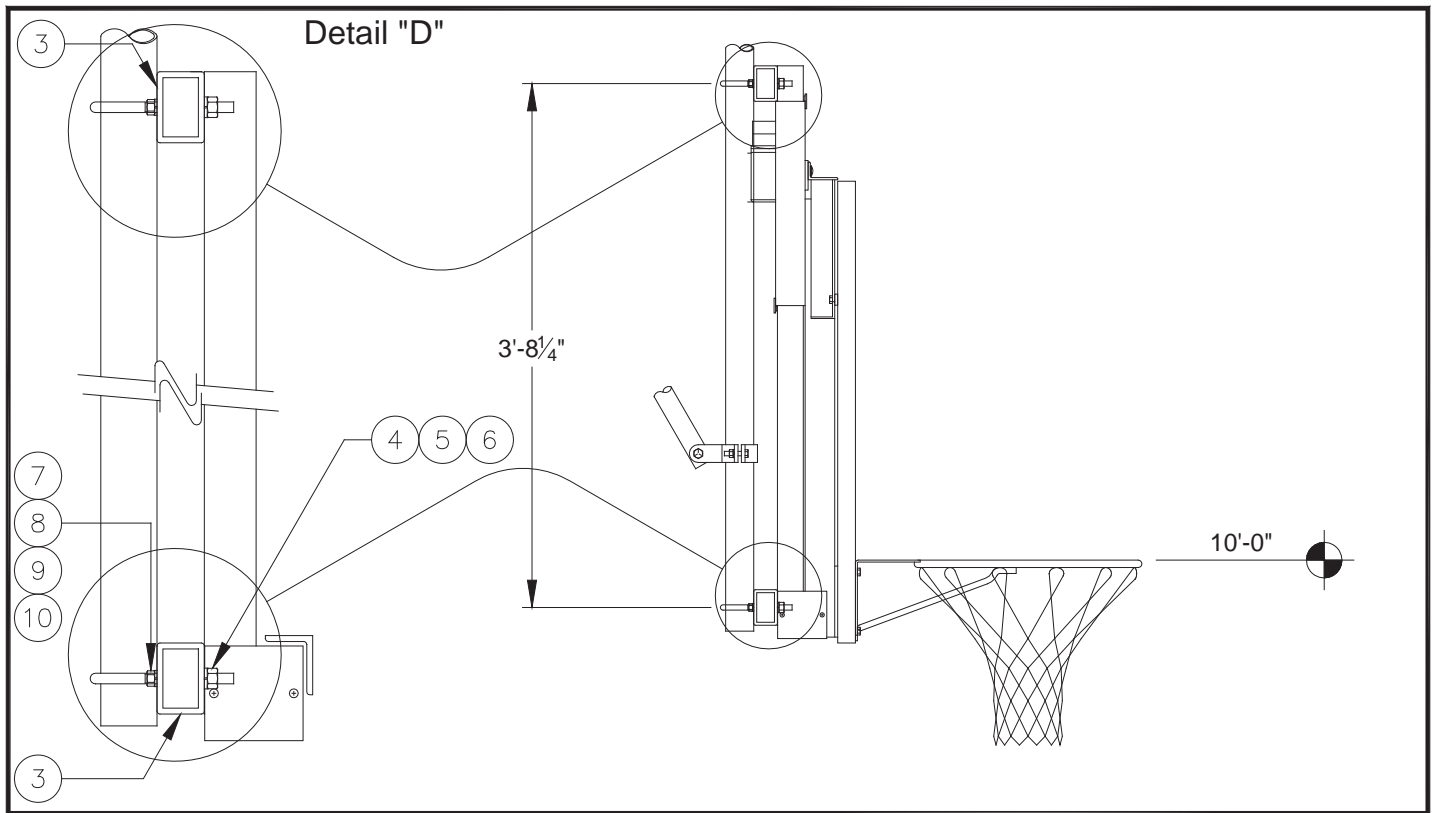


5. Lay the assembled height adjustment unit on the backside of the backboard with the attachment holes in alignment with the attachment inserts or slots on the backboard. Secure the upper backboard extension (2) to the backboard with the necessary hardware. (Hardware is optional – see custom packing list if applicable.) See Detail "C".



ATTACHMENT OF HEIGHT ADJUSTER TO BACKSTOP MAST

6. Hoist entire height adjustment assembly into position on the 2-3/8" O.D. drop tubes. See Detail "C". Secure to 2-3/8" O.D. drop tubes with the tubes and hardware provided with the height adjustment unit.



7. Attach goal to backboard and height adjustment Center-Strut® with hardware provided with the goal. Check goal with level before tightening the four bolts. See Detail "D".

8. CHECK FOR 10'-0" GOAL HEIGHT:

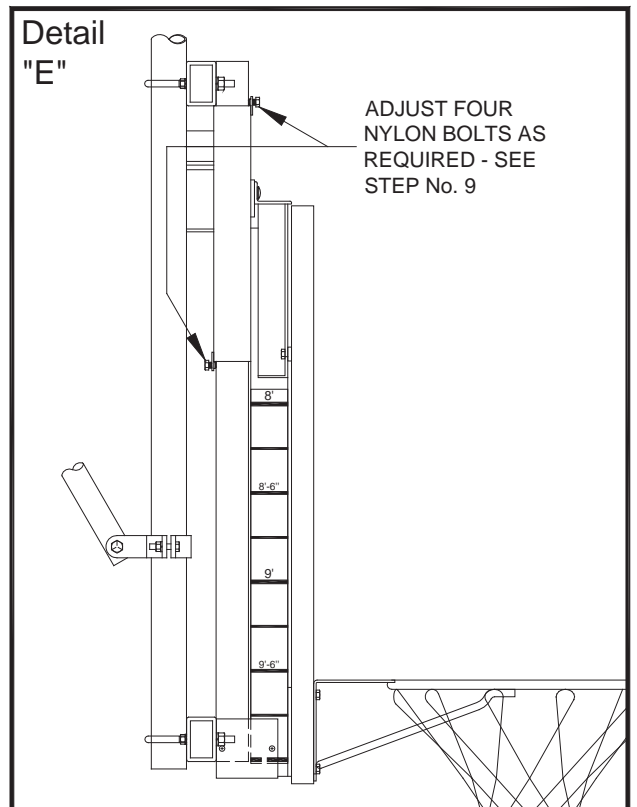
For operation with Key Switch, Sportsonic® II, or Powr-Touch® keypad, use temporary electrical hook-up as required (see appropriate wiring diagram) to raise height adjustment unit to the highest position (bottomed out on the upper angle).

For operation with Powr-Stick, use the Powr-Stick to raise height adjustment unit to the highest position (bottomed out on the upper angle). See Detail "F" on Pg. 13 for proper use of the Powr-Stick.

With the height adjustment unit raised to its highest position, check the 10'-0" goal height. Move height adjustment unit up or down on the 2-3/8" O.D. drop tubes as required to acquire the 10'-0" goal height.

9. For manual height adjusters, CHECK HEIGHT ADJUSTMENT OPERATION – Crank unit down to the 8'-0" goal height, then back up to 10'-0" using the height adjustment crank provided. (NOTE – One crank is provided with each pair of height adjustment units.)

10. Install the four 3/8" x 1/2" lg. nylon bolts into the four flat nuts on the height adjustment frame slide mechanism. The four nylon bolts may be adjusted to maximum backboard stability if required – Caution, over-tightening these nylon bolts could create undue friction and strain on the electric motor or make the unit more difficult to operate with the hand crank. See Detail "E".



- 11.** Lubricate the two plated inside tubes with an aerosol dry lubricant, such as Sprayon™ #S00708 T.F.E. DRY LUBE. See detail on Page 17. Sprayon™ #S00708 T.F.E. DRY LUBE is available from Porter Athletic Equipment Company, in a 10 oz. aerosol can (Porter part number MISC00243000). Run height adjuster up and down (10' to 8') several times. NOTE – protect the floor with a drop cloth to prevent a slippery build-up on the gymnasium floor.

CHECK HEIGHT ADJUSTMENT OPERATION

- Proceed to Page 12 for wiring requirements and testing of height adjuster with Key Switch operation.
- Proceed to Page 13 for hook-up and testing of height adjuster with Powr-Stick operation.
- Proceed to Page 14 for wiring requirements and testing of height adjuster with Sportsonic® II operation.
- Proceed to Page 15 for wiring requirements and testing of height adjuster with Powr-Touch® operation.

WIRING REQUIREMENTS – KEY SWITCH OPERATION

- 12. CHECK HEIGHT ADJUSTMENT OPERATION** – In order to test operation of height adjuster, use a temporary hook-up, or test after unit has been hard-wired to the key switch per the diagram below. Operate unit down to the 8'-0" goal height, then back up to 10'-0".

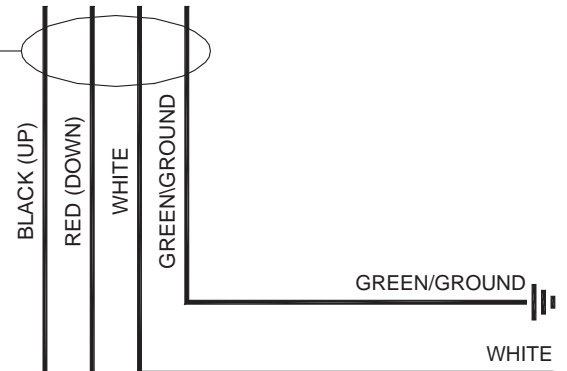
NOTE – All wiring between the height adjuster and the key switch is to be done by an electrical contractor per the diagram below, to meet all local code requirements.

IMPORTANT NOTE - PERFORMANCE OF MOTOR IS BASED ON HAVING 115 VOLTS AT MOTOR TERMINALS. VOLTAGES LESS THAN 115 VOLTS WILL AFFECT HOISTING CAPACITY AND RESULT IN DAMAGE TO MOTOR, THUS VOIDING WARRANTY. **SUBSTITUTION** OF THIS KEY SWITCH WILL VOID ALL WARRANTIES AND WILL RENDER THE OPERATION OF HEIGHT ADJUSTER UNSAFE.

CAUTION
KEY SWITCH MUST BE MOUNTED ON THE WALL IN A LOCATION SO THAT THE EQUIPMENT IT IS CONTROLLING IS IN FULL VIEW OF THE OPERATOR.

NOTE
ELECTRICAL CONTRACTOR TO PROVIDE FIELD WIRING AS REQUIRED TO MEET ALL LOCAL ELECTRICAL CODES.

TO JUNCTION BOX ON HEIGHT ADJUSTER FRAME



115 VOLT,
SINGLE PHASE
60 HERTZ
POWER SOURCE

HOT LINE

**** MINIMUM WIRE SIZE**

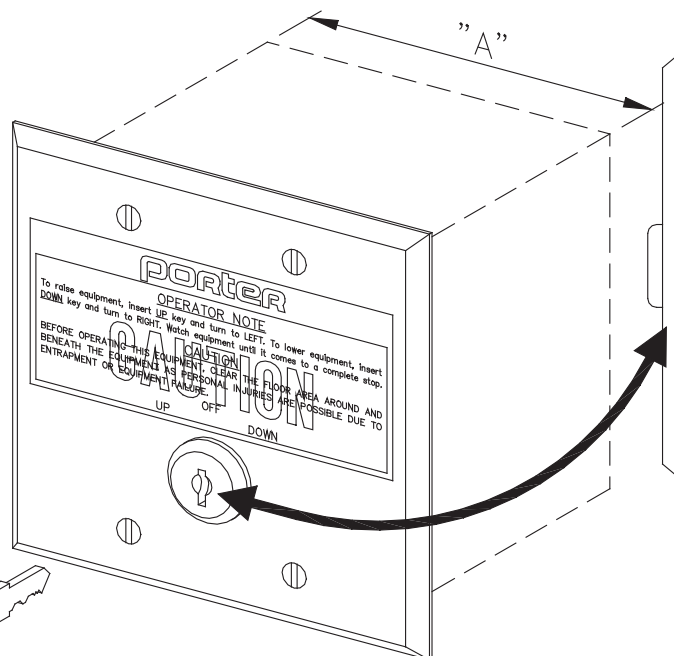
90' MAXIMUM RUN	- 12 GA.
90' to 140' RUN	- 10 GA.
OVER 140'	- 8 GA.

ELECTRICIAN NOTE - IF HEIGHT ADJUSTER OPERATION DOES NOT CORRESPOND TO UP AND DOWN LABEL ON KEY SWITCH, REVERSE BLACK AND RED WIRES.

TOP VIEW
OF
KEY SWITCH

INDIVIDUAL KEY SWITCH MOUNTED IN A STANDARD 4½" SQUARE FLUSH-MOUNTED STAINLESS STEEL COVER PLATE FOR MOUNTING IN A 4" SQUARE x 3½" DEEP MASONRY BOX (THEPITT No. 691 OR EQUAL) BY ELECTRICAL CONTRACTOR. KEY SWITCHES MAY BE GANGED IN PAIRS IN ONE COVER PLATE - ONE FOR THE BACKSTOP, ONE FOR THE HEIGHT ADJUSTER. SEE TABLE BELOW FOR WALL BOX SIZE REQUIREMENTS - DIMENSION "A".

KEY SWITCH QTY.	"A" BOX WIDTH	THEPITT BOX No. (OR EQUAL)
1	3¾"	691
2	7⅞"	693



MOMENTARY KEY SWITCH FURNISHED WITH TWO KEYS (UP AND DOWN) TO PREVENT THE POSSIBILITY OF INSTANTANEOUS REVERSING OF THE MOTOR, WHICH COULD RESULT IN OVERRIDING THE LIMIT SWITCHES, OR PLACING UNDUE STRESS ON HOIST SYSTEM. DO NOT SEPARATE KEYS FROM EACH OTHER.

- 13.** Give the UP and DOWN keys and this instruction booklet to the customer. Demonstrate the operation of the unit. Make the customer aware of the Cautions, the Warnings, and the Maintenance requirements listed on Page 16 and 17.

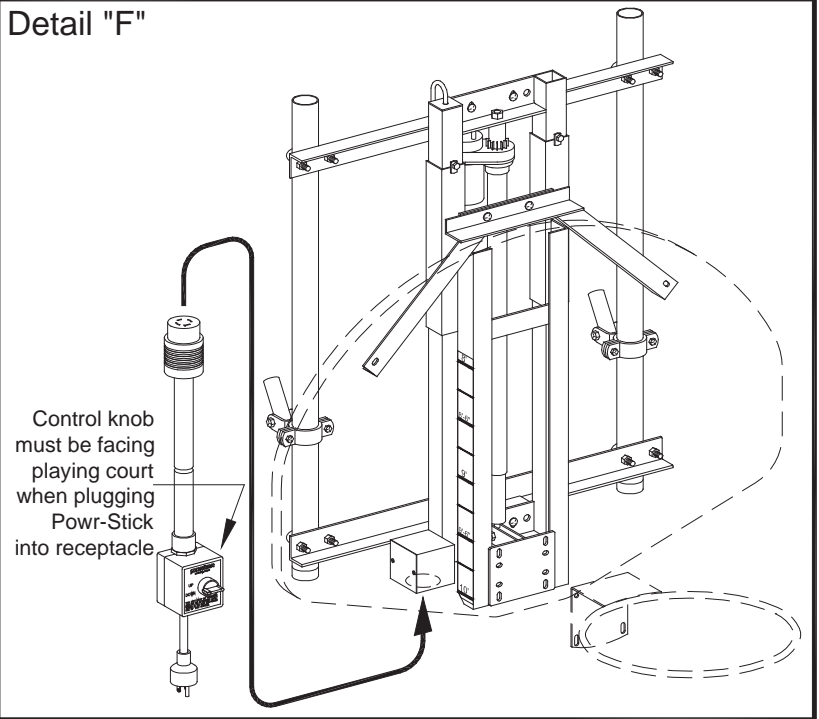
PROPER USAGE – POWR-STICK OPERATION

12. CHECK HEIGHT ADJUSTMENT OPERATION

– Connect top end of Powr-Stick to receptacle on bottom of height adjustment frame. Note that the control knob must be facing the playing court in order for the Powr-Stick to engage properly in the receptacle. See Detail "F". Operate unit down to the 8'-0" goal height, then back up to 10'-0".

13. Give the Powr-Stick and this instruction booklet to the customer. Demonstrate the operation of the unit. Make the customer aware of the Cautions, the Warnings, and the Maintenance requirements listed on Page 16 and 17.

Detail "F"



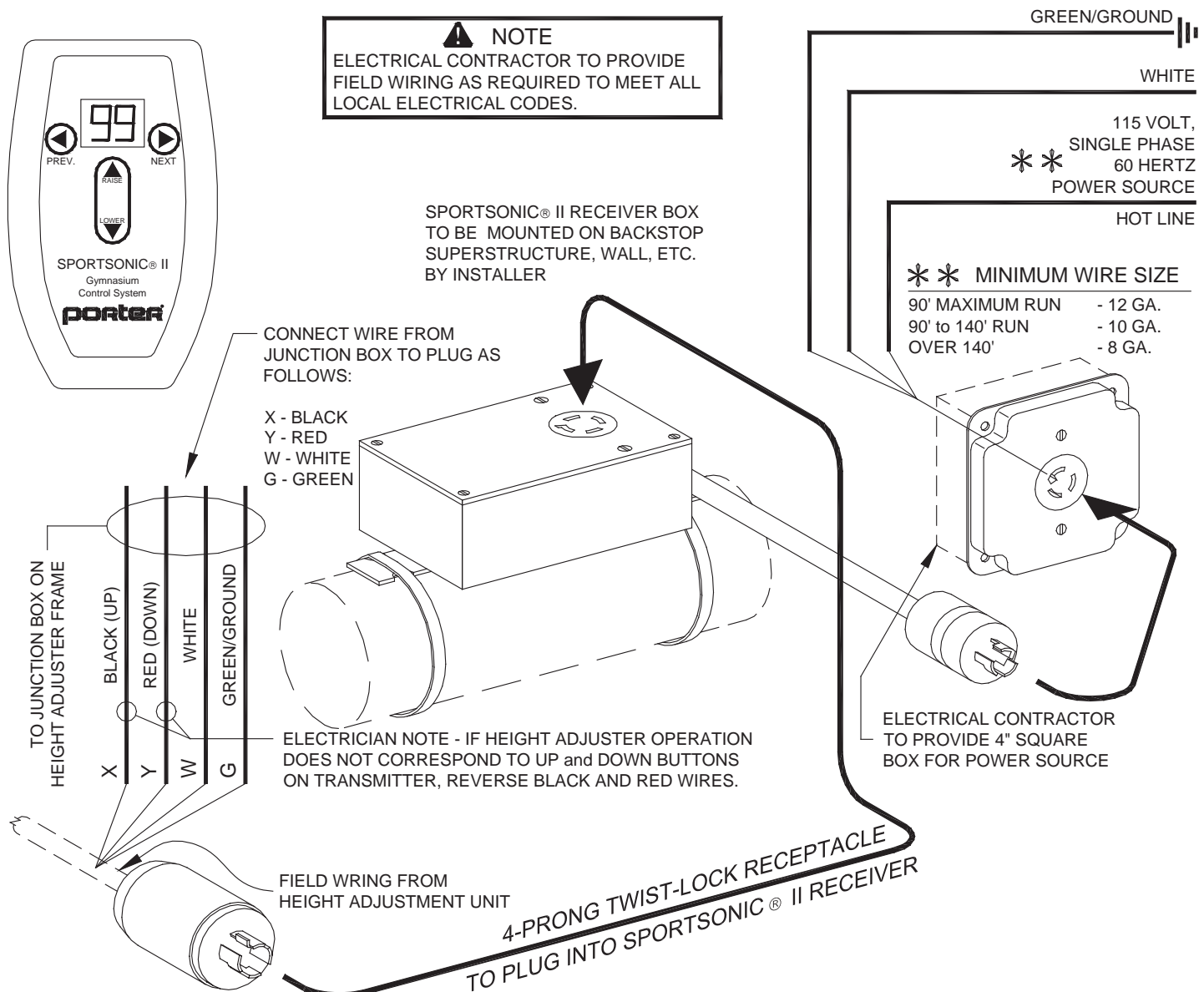
WIRING REQUIREMENTS – SPORTSONIC® II OPERATION

12. Install Sportsonic® II Receiver (14), and set all coding switches per the installation and operating instructions provided with each Sportsonic® II Transmitter. Connect plug (15) from height adjuster to receiver. Connect receiver to 3-prong twist-lock receptacle (17). See Diagram Below.

13. CHECK HEIGHT ADJUSTMENT OPERATION – In order to test operation of height adjuster, use a temporary hook-up, or test after unit has been connected to the Sportsonic® II Receiver per the diagram below. Operate unit down to the 8'-0" goal height, then back up to 10'-0".

NOTE – All wiring between the height adjuster and the Sportsonic® II Receiver is to be done by an electrical contractor per the diagram below, to meet all local code requirements.

IMPORTANT NOTE - PERFORMANCE OF MOTOR IS BASED ON HAVING 115 VOLTS AT MOTOR TERMINALS. VOLTAGES LESS THAN 115 VOLTS WILL AFFECT HOISTING CAPACITY AND RESULT IN DAMAGE TO MOTOR, THUS VOIDING WARRANTY.



14. Give the Sportsonic® II Transmitter and this instruction booklet to the customer. Demonstrate the operation of the unit. Make the customer aware of the Cautions, the Warnings, and the Maintenance requirements listed on Page 16 and 17.

WIRING REQUIREMENTS – POWR-TOUCH® OPERATION

- 12. CHECK HEIGHT ADJUSTMENT OPERATION** – In order to test operation of height adjuster, use a temporary hook-up, or test after unit has been hard-wired to the Powr-Touch® relay panel per the diagram below. Operate unit down to the 8'-0" goal height, then back up to 10'-0".

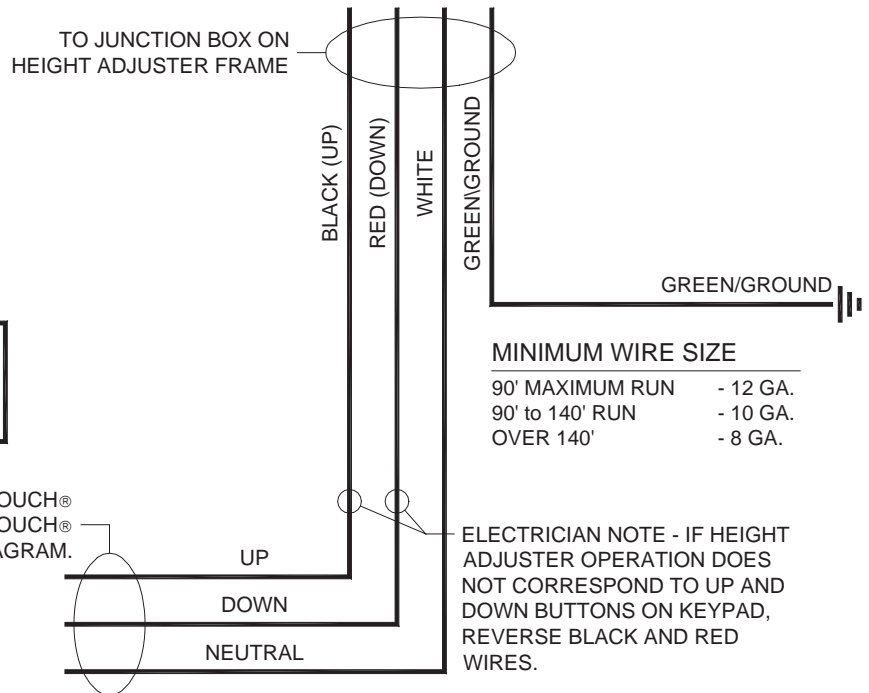
NOTE – All wiring between the height adjuster and the Powr-Touch® relay panel is to be done by an electrical contractor per the diagram below, to meet all local code requirements.

IMPORTANT NOTE - PERFORMANCE OF MOTOR IS BASED ON HAVING 115 VOLTS AT MOTOR TERMINALS. VOLTAGES LESS THAN 115 VOLTS WILL AFFECT HOISTING CAPACITY AND RESULT IN DAMAGE TO MOTOR, THUS VOIDING WARRANTY.

⚠ CAUTION
POWR-TOUCH®
KEYPAD MUST BE
MOUNTED ON THE
WALL IN A LOCATION
SO THAT THE
EQUIPMENT IT IS
CONTROLLING IS IN
FULL VIEW OF THE
OPERATOR.

⚠ NOTE
ELECTRICAL CONTRACTOR TO PROVIDE
FIELD WIRING AS REQUIRED TO MEET ALL
LOCAL ELECTRICAL CODES.

TO RELAY SET IN RELAY PANEL OF POWR-TOUCH®
CONTROL SYSTEM. REFER TO POWR-TOUCH®
INSTALLATION MANUAL FOR COMPLETE WIRING DIAGRAM.



MINIMUM WIRE SIZE

90' MAXIMUM RUN	- 12 GA.
90' to 140' RUN	- 10 GA.
OVER 140'	- 8 GA.

- 13. Demonstrate the operation of the unit to the customer.** Give this instruction booklet to the customer. Make the customer aware of the Cautions, the Warnings, and the Maintenance requirements listed on Page 16 and 17.



CAUTION

When height adjustment unit is mounted on a folding-type backboard support system, always adjust the goal height to 10'-0" before hoisting or folding the unit, so as not to place undue strain on the hoist system or the height adjustment mechanism.

Always keep the operating device (Keys from Key Switch, Powr-Stick, or Sportsonic® II Transmitter, Hand Crank) in the possession of a responsible adult who is trained in the proper use of this system.

For manual units, do not continue to crank unit once it reaches the 10'-0" or 8'-0" goal heights, as this will place undue strain on the mechanism and possibly jam unit in place.

For manual units, do not use a power drill that does not have a torque (clutch) adjustment, to raise and lower the height adjuster. See below for information on Porter's No. 00900-259 Portable Operator Kit



WARNING

Before attempting any repairs, lower the unit to the lowest position (8'-0" goal height) to eliminate the possibility of the backboard dropping suddenly, which could result in serious injuries or death.



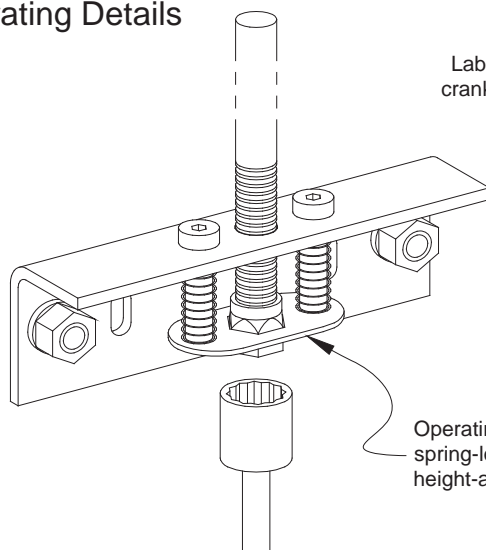
NOTE

This manual height adjuster can be raised and lowered with Porter's No. 00900-259 Portable Operator Kit. This battery-operated unit has a built-in torque (clutch) adjustment, a low operating speed (450 r.p.m.), and includes a socket extension assembly. Use the lowest torque clutch setting possible to operate the height adjuster, to avoid undue stress on the unit as it reaches the maximum Up (10') or Down (8') positions. Contact your local Porter dealer or Porter Athletic Equipment Company for additional information.

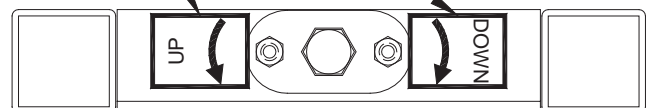


No. 00900-259 PORTABLE OPERATOR KIT

Operating Details



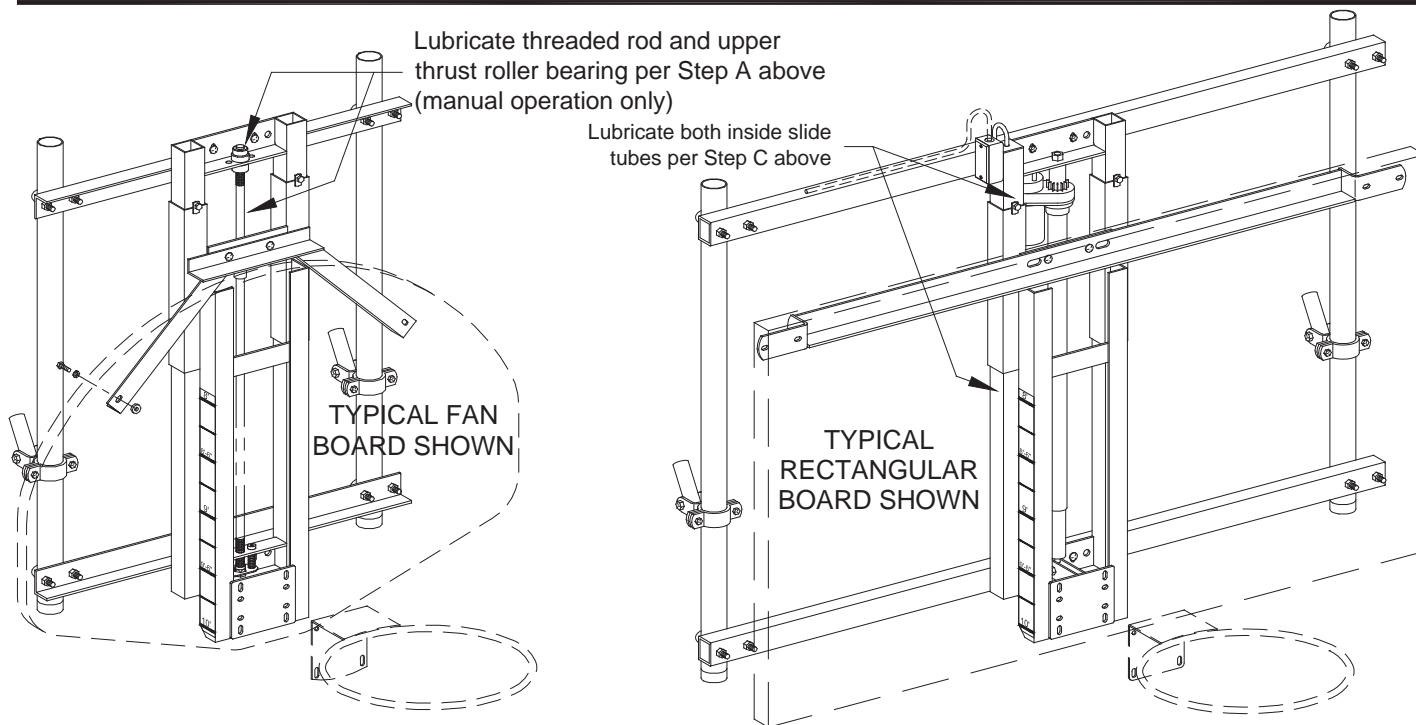
Labels indicate direction of operating crank to raise or lower height adjuster



Operating crank automatically pushes spring-loaded locking plate upward, allowing height-adjustment mechanism to operate

CARE AND MAINTENANCE

- A.** For manual height adjusters, semi-annually lubricate the entire threaded rod assembly and upper thrust roller bearing with any high quality multi-purpose type grease.
- B.** Periodically inspect height adjustment unit and support system for loose or defective parts – tighten or replace immediately as required.
- C.** Periodically (at least annually, depending on usage) lubricate the two plated inside tubes with an aerosol dry lubricant, such as Sprayon™ #S00708 T.F.E. DRY LUBE. Sprayon™ #S00708 T.F.E. DRY LUBE is available from your local Porter dealer or from Porter Athletic Equipment Company, in a 10 oz. aerosol can (Porter part number MISC00243000). Run height adjuster up and down (10' to 8') several times. NOTE – protect the floor with a drop cloth to prevent a slippery build-up on the gymnasium floor.



⚠ WARNING: This product can expose you to Titanium Dioxide, which is known to the State of California to cause cancer. For more information go to www.p65warnings.ca.gov.

porter

Porter Athletic Equipment Company

601 Mercury Drive, Champaign, IL U.S.A., 61822

Toll Free: (888) 277-7778 • Phone: (217) 367-8438 • Fax: (217) 239-2255

www.porterathletic.com

SAVE THESE INSTRUCTIONS FOR FUTURE USE