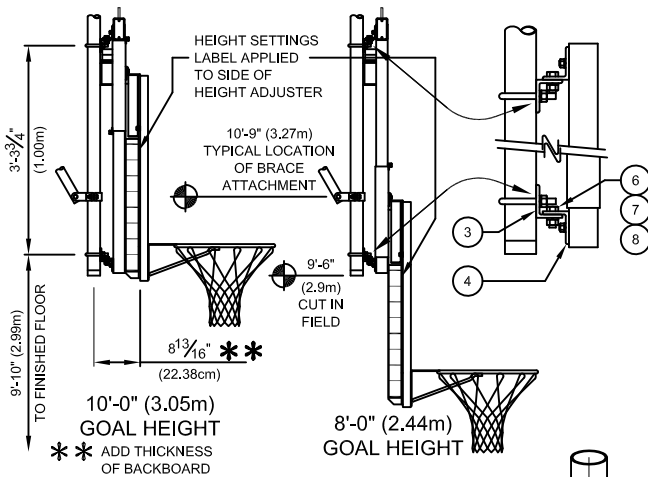


00503-211 - HEIGHT ADJUSTMENT SYSTEM

CENTER-STRUT® HEIGHT ADJUSTMENT SYSTEM FOR FAN BACKBOARD - ELECTRIC OPERATION WITH SPORTSONIC® II

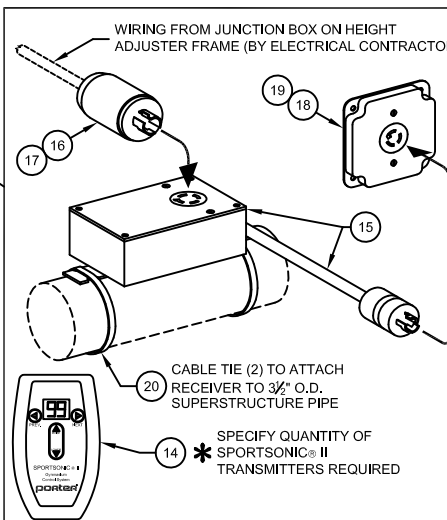
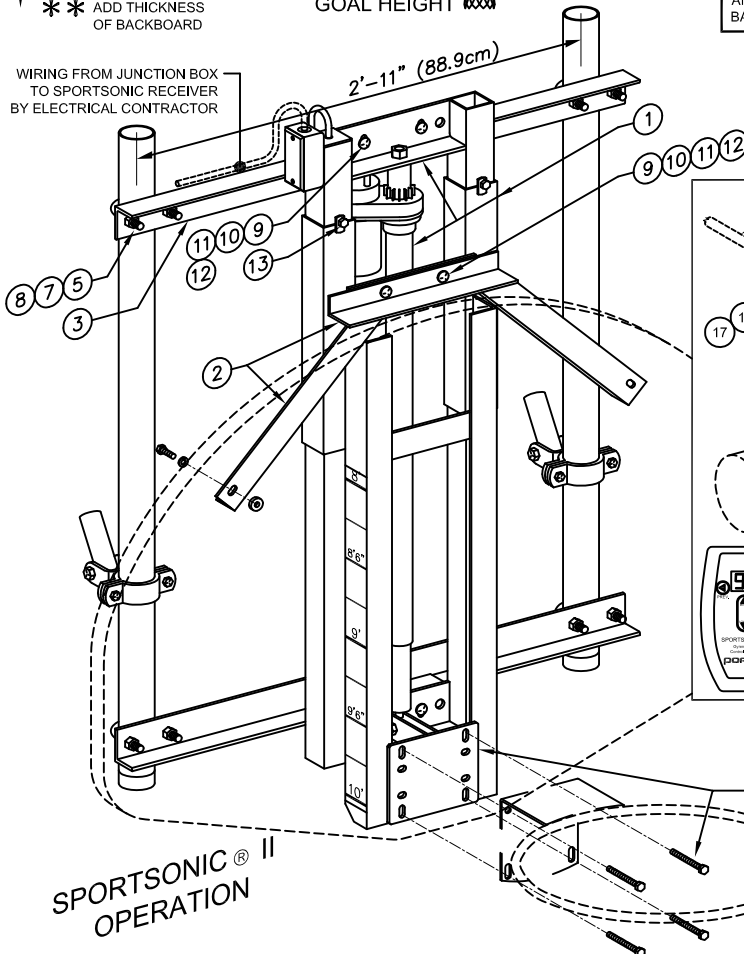


PARTS LIST	
No.	QTY.
1	1
2	1
3	2
4	2
5	4
6	4
7	12
8	12
9	6
10	6
11	6
12	6
13	4
14	*
15	1
16	1
17	1
18	1
19	1
20	2

* SPECIFY QUANTITY OF
SPORTSONIC® II TRANSMITTERS REQUIRED

NOTE

FOR USE ONLY WITH PORTER No. 00267-698 FAN FIBERGLASS,
AND PORTER No. 00234-000 Or 00234-300 FAN ALUMINUM,
BACKBOARDS.



SPORTSONIC® II
OPERATION

SEE PAGE No. B-903-S FOR FIELD WIRING
DETAILS AND REQUIREMENTS

- 00503-211 HEIGHT ADJUSTMENT SYSTEM FOR No. 500 SERIES BACKSTOP
w/ FAN BACKBOARD - ELECTRIC OPERATION WITH SPORTSONIC® II
- 12002-100 SPORTSONIC® II TRANSMITTER

Porter®

888-277-7778 PORTER@PORTERATHLETIC.COM
© COPYRIGHT 2014 PORTER ATHLETIC - ALL RIGHTS RESERVED

PROJECT NUMBER

PROJECT NAME

Porter

WWW.PORTERATHLETIC.COM/FACILITY

HEIGHT ADJUSTMENT SYSTEM SPECIFICATION SHEET

B-503-211

4/16/2014

00503-211 - HEIGHT ADJUSTMENT SYSTEM

CENTER-STRUT® HEIGHT ADJUSTMENT SYSTEM FOR FAN BACKBOARD - ELECTRIC OPERATION WITH SPORTSONIC® II

SPECIFICATIONS

PORTER No. 00503-211 CENTER-STRUT HEIGHT ADJUSTMENT SYSTEM WITH ELECTRIC SPORTSONIC® II OPERATION FOR USE ON No. 500 SERIES BASKETBALL BACKSTOPS WITH FAN SHAPED BACKBOARDS

Height adjustment unit shall be designed for use with No. 500 series ceiling suspended basketball backstop support systems to provide an adjustable, direct-mount (Center-Strut®) goal attachment system to eliminate any strain on the backboard should a player hang on the front mounted goal (conforms to the latest NCAA recommendation). Height adjustment units without the prescribed direct-mount goal feature will not be approved as equal. Height adjustment feature will allow goal height settings from 8'-0" to the official 10'-0" for use by all age groups. Unit shall be designed for use only with Porter No. 00267-698 fan fiberglass or No. 00234-000 or 00234-300 fan aluminum backboards.

Center unitized support frame shall be fabricated by dual, 2-3/16" square heavy-wall zinc plated guide tubes located on 11-3/16" centers. Ends of guide tubes shall be welded to heavy, formed mounting brackets. Height adjustment assembly mechanism shall be supported to No. 500 line drop frame assembly on 2'-11" centers by heavy structural support angles. Outer dual slide tubes shall support heavy structural steel angle sections which extend downward to accept a direct-mount (Center-Strut®) goal mounting system. Slide tube assembly shall be provided with a heavy steel section to attach a special upper backboard support assembly to secure the unit to the upper two corners of the fan shaped backboard.

Height adjustment unit shall incorporate a compact 115-volt, gear motor type linear actuator with 600 pound thrust capacity to raise and lower the goal height electrically. Motor shall draw 1.4 amps under full load. Integral limit switches shall provide automatic shut off at 8' and 10' goal heights. The motor shall be controlled by Sportsonic® II radio control system. Sportsonic® II portable hand-held transmitter No. 12002-100 will operate up to 99 individual units. One transmitter can be made to operate height adjustment units, in addition to backstop and divider curtain winches. Power supply for transmitter shall be a standard 9-volt battery. Transmitter shall operate on a carrier frequency of 315 MHz.

Each electric height adjuster shall be equipped with a commercial type 115 VAC receiver with a coding switch for individual operation by the portable transmitter. Receiver shall be factory wired and installed in a standard non-metallic enclosure (6" x 4" x 2-3/8") with a 6'-0" long SJT cord with a NEMA L5-15 molded twist-lock grounded plug attached. Matching flange type receptacle shall be mounted in a standard 4" square cover plate (box by others) for power supply. Wiring from junction box on height adjuster frame to receiver shall be provided by the electrical contractor to meet all local code requirements. Enclosure shall be furnished with a 4-pole twist-lock grounded type NEMA L14-20 receptacle to accept the power/control cable from the linear actuator.

All units to be factory tested for a 100' (nominal) operating range. Coding switch shall be configured in field for independent operation.

Wiring of all electrical components shall be in accordance with local area codes, and in accordance with manufacturer's instructions. All conduit, wiring, junction boxes and components not specified herein shall be furnished and installed by the electrical contractor.

A height setting scale shall be located on the side of the unit to visually determine height settings from 8'-0" to 10'-0" in 3" increments.

Height adjustment frame shall be finished with one coat of flat black enamel. Hardware shall be furnished for mounting unit to a 2-3/8" O.D. vertical support structure on 2'-11" centers.

LIFETIME WARRANTY (ADD TO SPECIFICATIONS AS REQUIRED)

Limited Lifetime warranty on Porter fan shaped fiberglass (00267-698) or aluminum (00234-000 or 00234-300) backboards when used in conjunction with No. 00503-211 Center-Strut® height adjustment unit installed on a Porter No. 500 series support structure.

ISSUED APRIL 16, 2014, SUBJECT TO CURRENT MANUFACTURING PROCEDURES AND CHANGES
COPYRIGHT 2014 - PORTER ATHLETIC - ALL RIGHTS RESERVED
PORTER@PORTERATHLETIC.COM

PORTER
WWW.PORTERATHLETIC.COM/FACILITY

HEIGHT ADJUSTMENT SYSTEM SPECIFICATION SHEET

B-503-211

4/16/2014