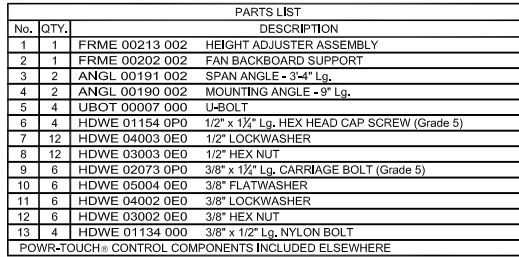


porter
WWW.PORTERATHLETIC.COM/FACILITY

HEIGHT ADJUSTMENT SYSTEM SPECIFICATION SHEET



WIRING FROM JUNCTION BOX TO KEY SWITCH BY ELECTRICAL CONTRACTOR

2'-11" (88.9cm)

1 9 10 11 12

8 7 5 3

11 10 9 13

2

6

8" 8'6" 9' 9'6" 10'

GOA THRU CHA CEN

FOR USE WITH
POWR-TOUCH®
GYMNASIUM
CONTROL SYSTEM

porter®
1-800-637-3090 PORTER@PORTERATHLETIC.COM
© COPYRIGHT 2017 PORTER ATHLETIC - ALL RIGHTS RESERVED

PROJECT NAME

B-504-211

5/18/2017

00504-211 - HEIGHT ADJUSTMENT SYSTEM

CENTER-STRUT® HEIGHT ADJUSTMENT
SYSTEM FOR FAN BACKBOARD -
ELECTRIC OPERATION (POWR-TOUCH®)

SPECIFICATIONS

PORTER No. 00504-211 CENTER-STRUT® HEIGHT ADJUSTMENT SYSTEM
FOR USE ON No. 500 SERIES BASKETBALL BACKSTOPS
WITH FAN SHAPED BACKBOARDS
LESS ELECTRICAL CONTROL FOR USE WITH POWR-TOUCH® SYSTEM

Height adjustment unit shall be designed for use with No. 500 series ceiling suspended basketball backstop support systems to provide an adjustable, direct-mount (Center-Strut®) goal attachment system to eliminate any strain on the backboard should a player hang on the front mounted goal (conforms to the latest NCAA recommendation). Height adjustment units without the prescribed direct-mount goal feature will not be approved as equal. Height adjustment feature will allow goal height settings from 8'-0" to the official 10'-0" for use by all age groups. Unit shall be designed for use only with Porter No. 00267-698 fan fiberglass or No. 00234-000 or 00234-300 fan aluminum backboards.

Center unitized support frame shall be fabricated by dual, 2-3/16" square heavy-wall zinc plated guide tubes located on 11-3/16" centers. Ends of guide tubes shall be welded to heavy, formed mounting brackets. Height adjustment assembly mechanism shall be supported to No. 500 line drop frame assembly on 2'-11" centers by heavy structural support angles. Outer dual slide tubes shall support heavy structural steel angle sections which extend downward to accept a direct-mount (Center-Strut®) goal mounting system. Slide tube assembly shall be provided with a heavy steel section to attach a special upper backboard support assembly to secure the unit to the upper two corners of the fan shaped backboard.

Height adjustment unit shall incorporate a compact 115-volt, gear motor type linear actuator with 600 pound thrust capacity to raise and lower the goal height electrically. Motor shall draw 1.4 amps under full load. Integral limit switches shall provide automatic shut off at 8' and 10' goal heights. The motor shall be controlled by Porter No. 2555 or 12800 Powr-Touch® Gymnasium Control System. Specify separately Powr-Touch® Key Pad or Powr-Touch® Control Panel(s) – quantities as required. See Page No. E-2555 or E-12800 for details and specifications. Wiring from junction box on height adjuster frame to panel on Powr-Touch® System shall be provided by the electrical contractor to meet all local code requirements.

Wiring of all electrical components shall be in accordance with local area codes, and in accordance with manufacturer's instructions. All conduit, wiring, junction boxes and components not specified herein shall be furnished and installed by the electrical contractor.

A height setting scale shall be located on the side of the unit to visually determine height settings from 8'-0" to 10'-0" in 3" increments.

Height adjustment frame shall be finished with one coat of flat black enamel. Hardware shall be furnished for mounting unit to a 2-3/8" O.D. vertical support structure on 2'-11" centers.

LIFETIME WARRANTY (ADD TO SPECIFICATIONS AS REQUIRED)

Limited Lifetime warranty on Porter fan shaped fiberglass (00267-698) or aluminum (00234-000 or 00234-300) backboards when used in conjunction with No. 00501-211 Center-Strut® height adjustment unit installed on a Porter No. 500 series support structure.

ISSUED MAY 18, 2017, SUBJECT TO CURRENT MANUFACTURING PROCEDURES AND CHANGES
COPYRIGHT 2017 - PORTER ATHLETIC - ALL RIGHTS RESERVED
PORTER@PORTERATHLETIC.COM

PORTER
WWW.PORTERATHLETIC.COM/FACILITY

HEIGHT ADJUSTMENT SYSTEM SPECIFICATION SHEET

B-504-211

5/18/2017