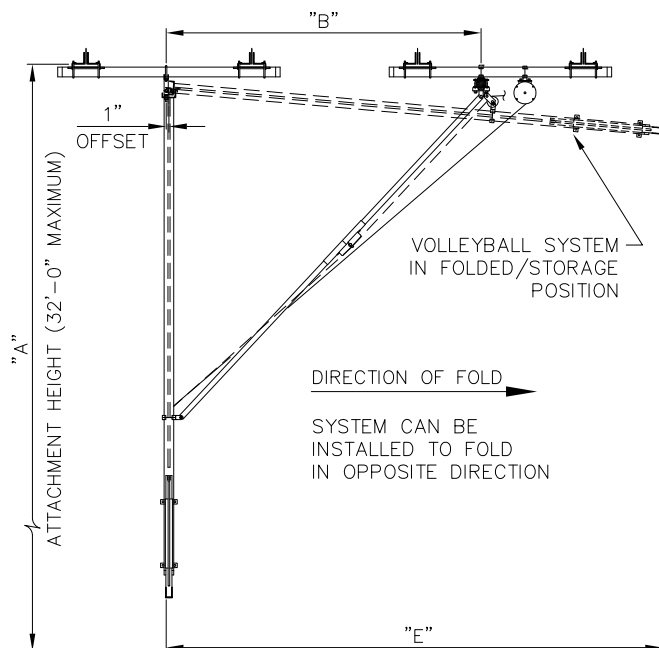


TYPICAL SINGLE COURT FLOOR PLAN LAYOUT

FIELD CHECK NOTE:

PLEASE NOTE ON THIS DRAWING EXACT LOCATIONS OF ALL BASKETBALL BACKSTOPS, DIVIDER CURTAINS, LIGHT FIXTURES, HVAC DUCTS, AND HEATING UNITS THAT ARE NEAR THE VOLLEYBALL SYSTEM SUPPORT STRUCTURE. SEE SHEET CHART BELOW FOR DIMENSIONAL DATA.



FIELD CHECK TO ENSURE SYSTEM CLEARS ALL OVERHEAD OBSTACLES IN THIS AREA  
TYPICAL VOLLEYBALL SYSTEM SIDE VIEW

\* DIMENSIONS ARE ACCURATE WITHIN 3"± (REFER TO SHEET V-1910 OR V-1920 FOR CALCULATION FORMULA)

\*\* ADD 3'-3" FOR UNITS EQUIPPED WITH JUDGE'S STAND

FIELD CHECK GUIDE

POWR-NET® OVERHEAD SUPPORTED VOLLEYBALL SYSTEM

"A" ATTACHMENT HEIGHT	* "B" SIDE BRACE DIMENSION	** "E" FOLD DIMENSION
18'-0" - 18'-6"	7'-5"	13'-8"
18' 6-1/8" - 19'-0"	7'-11"	14'-2"
19' 0-1/8" - 19'-6"	8'-5"	14'-8"
19' 6-1/8" - 20'-0"	8'-11"	15'-2"
20' 0-1/8" - 20'-6"	9'-5"	15'-8"
20' 6-1/8" - 21'-0"	9'-11"	16'-2"
21' 0-1/8" - 21'-6"	10'-5"	16'-8"
21' 6-1/8" - 22'-0"	10'-11"	17'-2"
22' 0-1/8" - 22'-6"	11'-5"	17'-8"
22' 6-1/8" - 23'-0"	11'-11"	18'-2"
23' 0-1/8" - 23'-6"	12'-5"	18'-5"
23' 6-1/8" - 24'-0"	12'-11"	19'-2"
24' 0-1/8" - 24'-6"	13'-5"	19'-8"
24' 6-1/8" - 25'-0"	13'-11"	20'-2"
25' 0-1/8" - 25'-6"	14'-5"	20'-8"
25' 6-1/8" - 26'-0"	14'-11"	21'-2"
26' 0-1/8" - 26'-6"	15'-5"	21'-8"
26' 6-1/8" - 27'-0"	15'-11"	22'-2"
27' 0-1/8" - 27'-6"	16'-5"	22'-8"
27' 6-1/8" - 28'-0"	16'-11"	23'-2"
28' 0-1/8" - 28'-6"	17'-5"	23'-8"
28' 6-1/8" - 29'-0"	17'-11"	24'-2"
29' 0-1/8" - 29'-6"	18'-5"	24'-8"
29' 6-1/8" - 30'-0"	18'-11"	25'-2"
30' 0-1/8" - 30'-6"	19'-5"	25'-8"
30' 6-1/8" - 31'-0"	19'-11"	26'-2"
31' 0-1/8" - 31'-6"	20'-5"	26'-8"
31' 6-1/8" - 32'-0"	20'-11"	27'-2"

PATENT No's. 6,511,391; 6,776,733.

REVISION	DATE	PORTER No.
1		
2		
3		
4		
5		
6		
7		
8		
9		
10		
11		
12		
13		
14		
15		
16		
17		
18		
19		
20		
21		
22		
23		
24		
25		
26		
27		
28		
29		
30		
31		
32		
33		
34		
35		
36		
37		
38		
39		
40		
41		
42		
43		
44		
45		
46		
47		
48		
49		
50		
51		
52		
53		
54		
55		
56		
57		
58		
59		
60		
61		
62		
63		
64		
65		
66		
67		
68		
69		
70		
71		
72		
73		
74		
75		
76		
77		
78		
79		
80		
81		
82		
83		
84		
85		
86		
87		
88		
89		
90		
91		
92		
93		
94		
95		
96		
97		
98		
99		
100		

No. 1900 SERIES  
POWR-NET® OVERHEAD-SUPPORTED  
VOLLEYBALL SYSTEM  
FIELD CHECK GUIDE

THIS PRINT IS THE PROPERTY OF PORTER ATHLETIC EQUIPMENT COMPANY  
AND MAY NOT BE REPRODUCED WITHOUT WRITTEN PERMISSION

**porter**  
WORLD LEADER  
IN QUALITY SPORTS EQUIPMENT  
601 MERCURY DRIVE  
CHAMPAIGN, ILLINOIS 61822  
www.porterathletic.com

DRAWING BY  
TJK  
CHECKED BY  
RJM  
PAGE No.  
V-1900-1