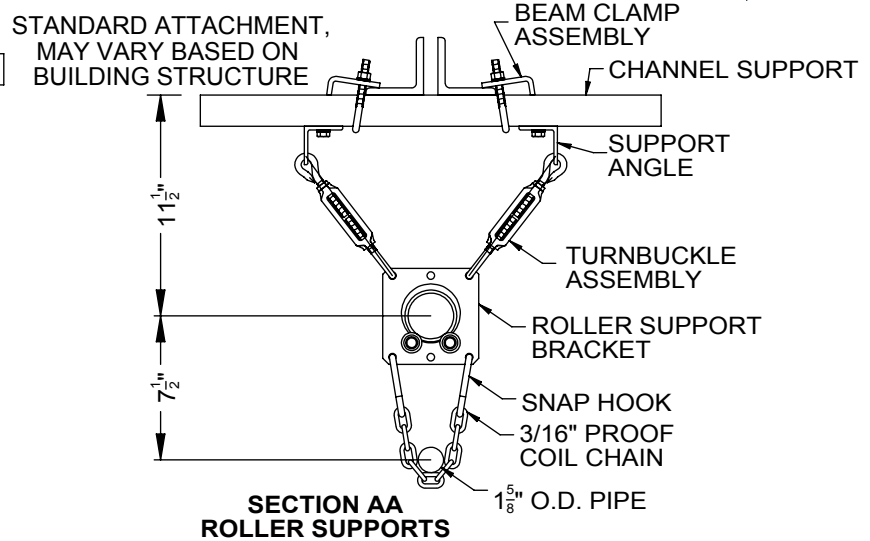
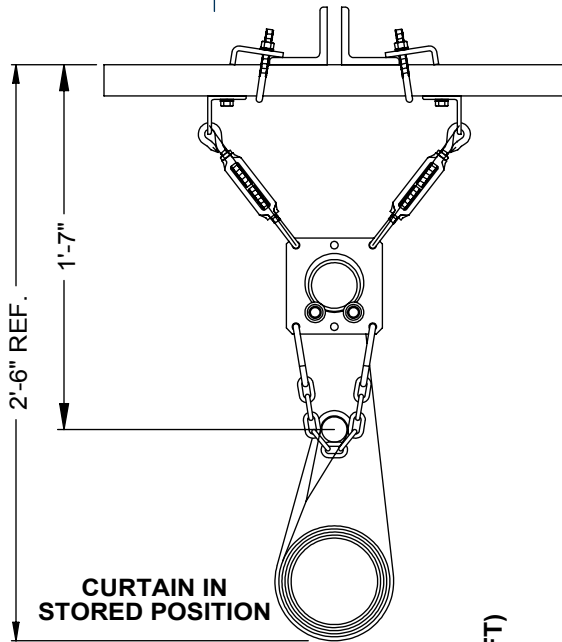
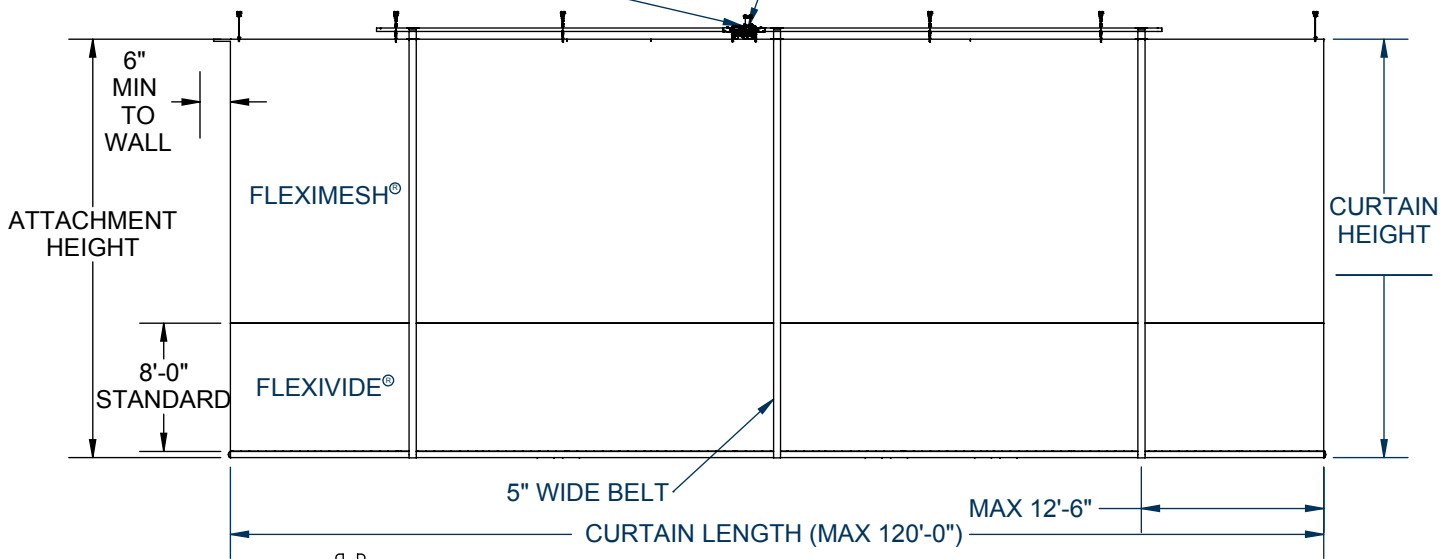


90675000 - ROLL-UP GYMNASIUM DIVIDER CURTAIN

MAXIMUM SIZE 120'-0" LONG AND 4000 SQ. FT.

ELECTRICIAN NOTE: MOUNT 4" SQ. JUNCTION BOX WITHIN 3'-0" OF ELECTRIC WINCH

WINCH AT CENTER STANDARD, AVAILABLE AT END FOR CURTAINS LESS THAN 100' LONG



ESTIMATED WINCH BASED ON CURTAIN SIZE WITH 8' OF SOLID VINYL (SOME CONDITIONS MAY REQUIRE DEVIATION FROM CHART)

LOW TORQUE (UP TO 16 FT/MIN)
MEDIUM TORQUE (UP TO 8 FT/MIN)
HIGH TORQUE (UP TO 5 FT/MIN)

CURTAIN HEIGHT (FT)

| | 400 | 800 | 1200 | 1600 | 2000 | 2400 | 2800 | 3200 | 3600 | 4000 | | |
|--------------------|-----|-----|------|------|------|------|------|------|------|------|------|------|
| 40 | 400 | 800 | 1200 | 1600 | 2000 | 2400 | 2800 | 3200 | 3600 | 4000 | | |
| 30 | 300 | 600 | 900 | 1200 | 1500 | 1800 | 2100 | 2400 | 2700 | 3000 | 3300 | 3600 |
| 20 | 200 | 400 | 600 | 800 | 1000 | 1200 | 1400 | 1600 | 1800 | 2000 | 2200 | 2400 |
| 10 | 100 | 200 | 300 | 400 | 500 | 600 | 700 | 800 | 900 | 1000 | 1100 | 1200 |
| 0 | | | | | | | | | | | | |
| | 10 | 20 | 30 | 40 | 50 | 60 | 70 | 80 | 90 | 100 | 110 | 120 |
| CURTAIN WIDTH (FT) | | | | | | | | | | | | |

WWW.PORTERATHLETIC.COM/FACILITY

CURTAIN SPECIFICATION SHEET

C-675

PROJECT NUMBER

PROJECT NAME

90675000 - ROLL-UP GYMNASIUM DIVIDER CURTAIN

MAXIMUM SIZE 120'-0" LONG AND 4000 SQ. FT.

SPECIFICATIONS

The 675 Curtain is available in the following configurations:

- Solid & Mesh (as specified below)
- All Solid
- All Mesh

Gym divider curtain shall be bottom roll-up type wide by high and shall be in one continuous section as manufactured by Porter Athletic. Lower section of curtain shall be 8'-0" high Flexivide® solid vinyl, polyester reinforced 19 oz. vinyl coated fabric (per square yard, containing antibacterial, fungi-resistant and flame-retardant chemicals to meet requirements of ASTM E-84 Class A Rating (25 Flame Spread, 450 Smoke Development), and NFPA-701 large scale, ULC S-109 large and small scale, and State of California test requirements). Upper section of curtain shall be of Fleximesh®, designed for air breathing areas in gym dividers, tennis screens or other custom air transfer applications. Fleximesh® material shall be an open polyester type interlocking grid weave coated with polyvinyl chloride with an approximate 45 to 50% open area. Weight of material – 7 oz. per square yard. Flame resistant (meets California Health and Safety Code Section 13115 Large and Small Scale Test, Fed. Std. 191A, CPAI-84, NFPA 701, BIFMA F-1-78, MSHA-155). Fleximesh® begins at a standard height of 8'-0" above the floor (custom heights available). Curtain may also be furnished in all-solid (Flexivide®) or all-mesh (Fleximesh®) if required – specify. An "all-mesh" curtain will have solid (Flexivide®) material around the bottom tube to a height of approximately 8" above the finished floor.

Top of curtain shall be fabricated with a pocket to conceal a continuous 1-5/8" O.D. steel tube extending the full length of the fabric to ensure proper support. Tube shall be supported from roller support assemblies on adjustable chains not exceeding 14'-0" centers.

Divider curtain shall be neatly and compactly rolled on a 4-1/2" diameter batten tube concealed in the bottom section of the vinyl fabric. Rolling action shall be accomplished by means of multiple hoist belts not to exceed 25'- 0" on center. Belts shall be of a heavy, industrial grade polyester fabric 5" in width. One side of hoist belts shall be provided with a special friction surface, to provide rolling friction against the vinyl fabric in order to facilitate the rolling action of the bottom batten to roll the fabric compactly and to eliminate wrinkles. Opposite side of hoist belts shall be provided with a smooth surface, to allow for easy cleaning.

Hoist belts shall terminate on continuous zinc-plated 2-3/8" O.D. tube line shaft arrangement. Line shaft shall turn in special roller support assemblies equipped with four steel ball bearing wheel rollers. Each roller support assembly shall be positioned adjacent to a hoist belt termination. Support assemblies shall be secured to structural roof framing supports by means of turnbuckles and support chains to provide structural integrity and accommodate all slopes or building camber.

See winch specifications for more information on included Porter winch system and control options. (see C-701)

All metal parts not zinc-plated shall be powder coated. See swatch card SMPL00048037 for standard color options. (contact Porter for custom requests)

OPTIONAL SPECIFICATIONS

- Line Shaft Safety Lock (No. 10796000): Curtain shall incorporate internal centrifugal force type lock mechanism into the line shaft to automatically lock equipment if lowering speed surpasses expected and safe velocity. two shall be required for curtains with line shafts exiting both sides of winch.

WARRANTY

- 675 curtains come with a 1 year limited warranty.
- Other components may be covered by their own extended warranty.

ACCESSORIES

- Floor Hockey Curtain Pad (No. 00357012)
- Audible Motion Alarm (No. 12005100)

COLOR OPTIONS

- FLEXIVIDE®
 - See SMPL00048035
- FLEXIMESH®
 - See SMPL0048036

LEED® SUBMITTAL INFORMATION

| Credit | Measure |
|-------------------------|---|
| MRc4-Recycled Content | Post Consumer Average 10.0% Post Industrial 0% |
| MRc5-Regional Materials | Raw materials originate from multiple sources so origin point cannot be determined. Final Manufacturing/Assembly in Champaign, IL 61822 |