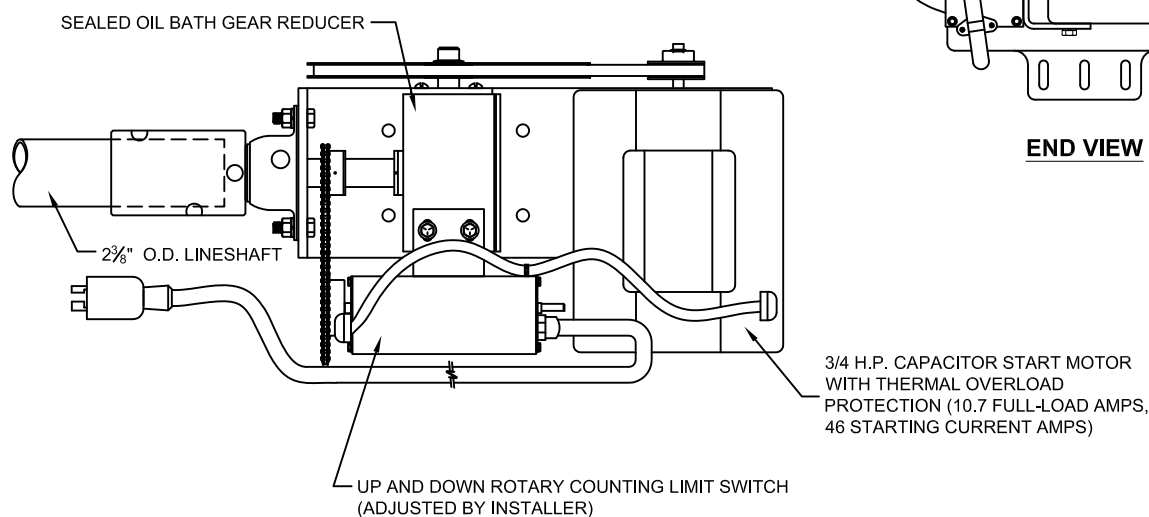
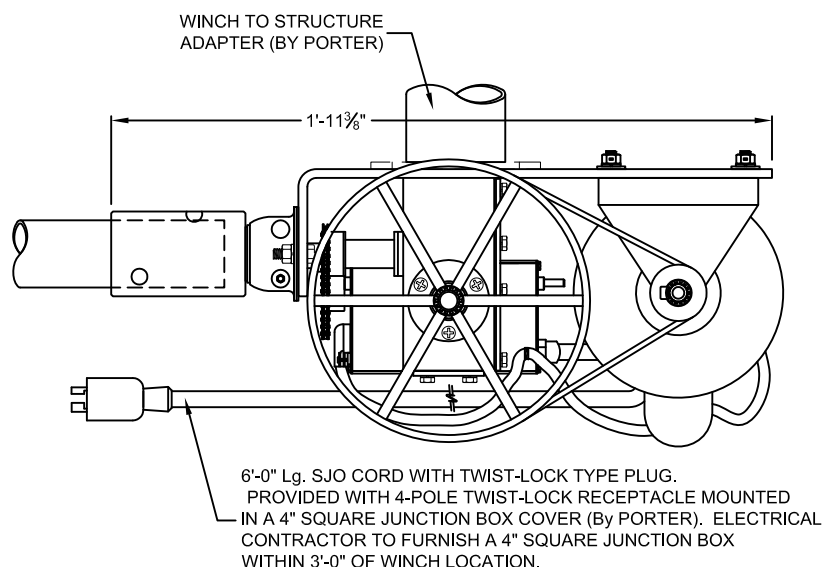
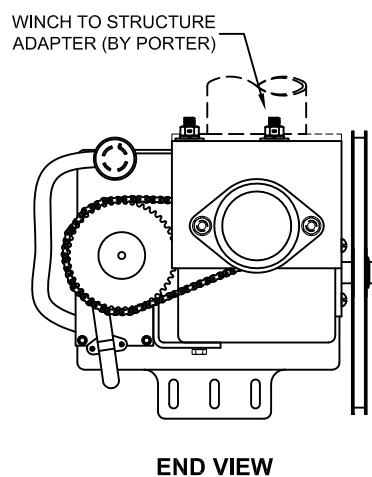


# 910060XX - SINGLE OUTPUT WINCH

## 3/4 H.P. ELECTRIC OPERATOR FOR DIVIDER CURTAINS AND BATTING CAGES



**WARNING**  
USE OF THIS OPERATOR ON PRODUCTS OTHER THAN PORTER GYMNASIUM DIVIDER CURTAINS AND BATTING CAGES IS **EXPRESSLY PROHIBITED**.



INDICATE TYPE OF CONTROL FOR WINCH. **SEE THE PAGES INDICATED BELOW FOR SPECIFICATIONS AND FIELD WIRING DETAILS FOR EACH CONTROL SYSTEM.**

- ☐ See E-791 — No. 791 KEY SWITCH CONTROL  
KEY SWITCH CONTROL PROVIDED AS STANDARD, UNLESS OPTIONAL CONTROL SYSTEM (LISTED BELOW) IS SPECIFIED
- ☐ See E-2002 — No. 2002 SPORTSONIC® II RADIO CONTROL SYSTEM
- ☐ See E-2002-5 — No. 2002 SPORTSONIC® II DUAL-MODE RADIO CONTROL / KEY SWITCH SYSTEM
- ☐ See E-2555 — No. 2555 POWR-TOUCH® 2.5 KEY PAD CONTROL SYSTEM
- ☐ See E-12800 — No. 12800 POWR-TOUCH® 5 TOUCH SCREEN CONTROL SYSTEM

# Porter®

1-800-637-3090 PORTER@PORTERATHLETIC.COM  
© COPYRIGHT 2017 PORTER ATHLETIC - ALL RIGHTS RESERVED

PROJECT NUMBER \_\_\_\_\_

PROJECT NAME \_\_\_\_\_

Porter

WWW.PORTERATHLETIC.COM/FACILITY

ELECTRIC WINCH SPECIFICATION SHEET

C-910-1W

6/6/2017

# 910060XX - SINGLE OUTPUT WINCH

## 3/4 H.P. ELECTRIC OPERATOR FOR DIVIDER CURTAINS AND BATTING CAGES

### SPECIFICATIONS

#### PORTER 3/4 H.P. ELECTRIC OPERATOR (SINGLE-OUTPUT) FOR DIVIDER CURTAINS AND BATTING CAGES

Winch shall be worm gear type, designed to hold equipment at any position when raising or lowering. Winch housing is machined from a high strength ductile iron casting. The worm is machined from high strain tempered steel bar. All surfaces of the worm shaft are ground and the worm teeth and seal surfaces are polished after grinding for the utmost in efficiency and sealing capabilities. Worm shaft shall turn in sealed, precision thrust bearings. The shaft shall also be sealed by an additional seal on the outside of the sealed bearings.

Worm gear shall be machined from high strength forged bronze alloy for exceptional wearability and long life characteristics.

The worm and gear set to run in an oil bath within main shaft housing which is completely sealed by the worm shaft seal, and by a double lip seal around the polished cable drum shaft where it enters the housing. This unit is filled with oil at factory, and sealed for maintenance-free service.

Winch to be operated mechanically by means of a 3/4 H.P. (10.7 FLA, 46 starting current amps) capacitor type 60 cycle, 115 volt, single phase electric motor with automatic thermal overload protection manufactured to NEMA specifications. The motor shall drive the winch by means of a connecting V-belt and sprockets.

Output shaft shall be mechanically interconnected to a special rotary counting Up-Down limit switch assembly, which shall be mounted and pre-wired to motor as an integral part of the winch. Limit switch shall be furnished in a special, extruded aluminum housing. Adjustment of said limit switches designed to be easily made without the use of tools. Winch shall be pre-wired with a 6'-0" lg. neoprene covered cable with a twist-lock grounded type plug attached.

Specify type of control for winch:

- Key Switch control (provided as standard, unless optional control system (listed below) is specified)
- Sportsonic® II Radio Control System
- Sportsonic® II Dual-Mode Radio Control / Key Switch System
- Powr-Touch® 2.5 Key Pad Control System
- Powr-Touch® 5 Touch Screen Control System

Under no-load conditions, RPM of output shaft is 11.5, RPM of motor is 1725. Curtain raises or lowers at a rate of approximately 7'-6" / minute.

Wiring of all electrical components shall be in accordance with local area codes, and in accordance with manufacturer's instructions.

All conduit, wiring, junction boxes and components not specified herein shall be furnished and installed by the electrical contractor.